



# AMobile Company Introduction



# About AMobile



**AMobile** Solutions Corp. was established in **2013** as a joint venture between **MediaTek** and **ARBOR**. The company specializes in wireless communication and has evolved into an expert in mobile device solutions for various sectors, including warehousing, logistics, manufacturing, and retail. By leveraging ARBOR's expertise in IPC technology, manufacturing, service, and distribution channels and combining it with MediaTek's core chip technology support, AMobile has emerged as a leader in the ARM architecture domain.



In June of **2023**, we made a significant move by launching the **Advance Image and AI R&D Center** to pioneer the next-generation machine vision technology. This new technology will merge wireless communication seamlessly with **AI vision** and is set to mark our entry into a groundbreaking new domain.



We have **130 staffs** in Taiwan and China combined, with approximately **60 RD** (excluding factory personnel).



# Strong Capability, Quality Manufacturer, Best Support Service



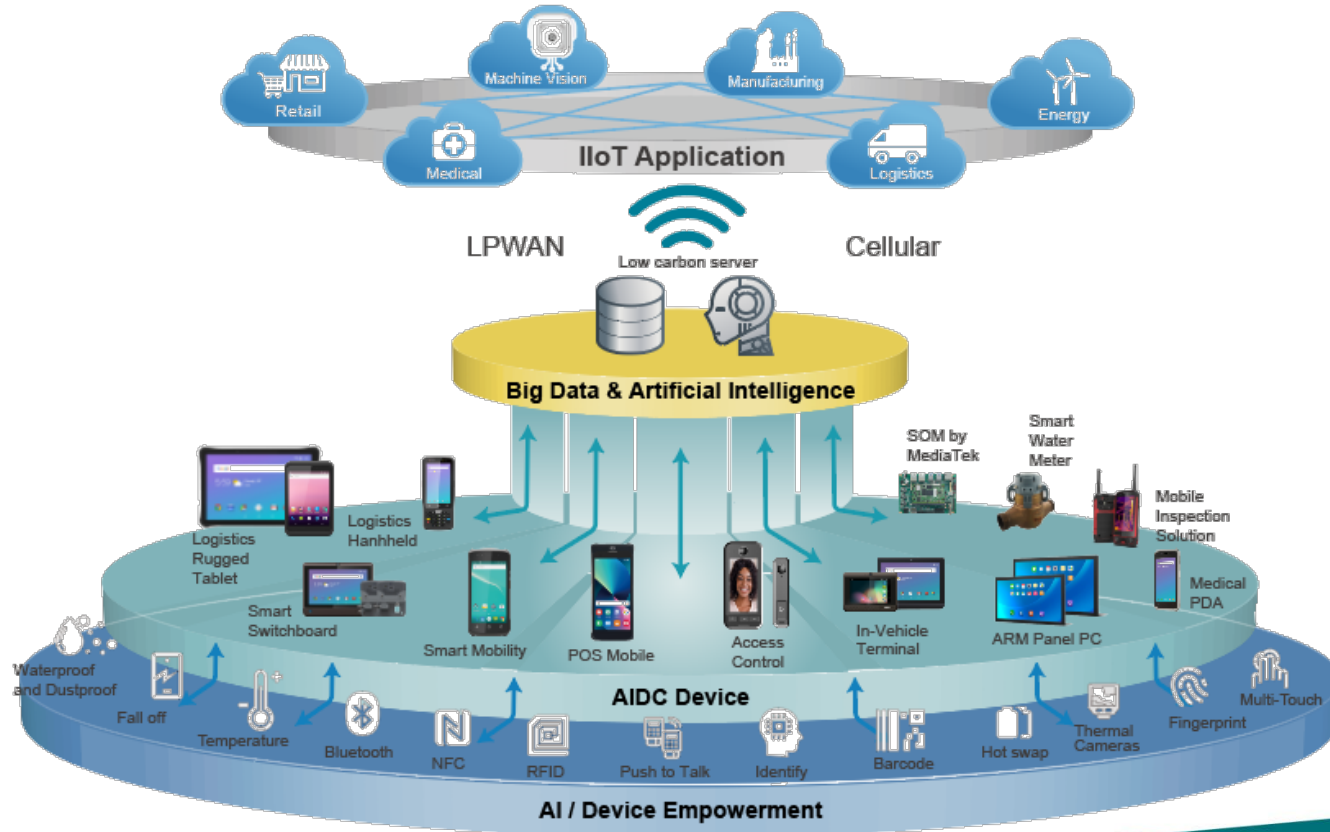
30 years of experience  
in the IPC industry and a  
global network of  
distributors.)

Global leading IOT  
Solution Service provider  
(NTD108B revenue in  
2022)

**AMobile**, established for **11** years, possesses a robust "golden triangle" as a strong support system:

- ▶ Provides **ODM/OEM** products with rapid systematization, customization, and real-time response to industry demands.
- ▶ Leveraging **MediaTek** chip support to develop cutting-edge wireless communication products continuously.
- ▶ Utilizes **ARBOR**'s field domain knowledge to support the industrial customers.
- ▶ For high volume productions, utilizes **ENNOCONN** alliance factories in Malaysia and Vietnam, ensuring on-time delivery without delays.

# Mobile for AIoT



# Technologies Competence

Wireless Technology on ARM SoC integration



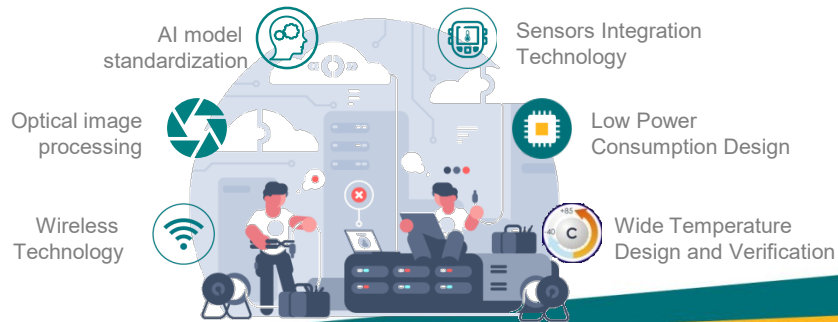
Skillful on Edge AI SDK & Toolchain



Optical Imaging Fusion & Tuning Technology



Industrial design & integration



MEDIATEK



reddot award 2018  
winner

GT-500U received  
Reddot award

The Smart Water Meter  
assists water companies  
in precise billing,  
minimizing errors, and  
utilizing big data to detect  
problems like water leaks.



5G enabled tablets  
with support of Google  
Cloud applications

Advanced Image  
& AI R&D center  
Establish

Access Control

ARBOR and  
MediaTek Joint  
Venture : AMobile

2013

2018

2020

2022

2023

2025

AMobile



2017

2019

2021

2022

2024

Strategic Alliance  
with Konka

KONKA Mobile  
Artisan's Spirit

World's first smart  
inspection  
handheld :G60

POCT Solution that  
takes blood exam to  
the patient

Developing COVID  
temperature  
detection methods.

MEDIATEK

Become a MediaTek  
Industry VAR+

Soft payment  
PDA



reddot award 2017  
winner industrial design



# Global Sales Network





# Production Bases

Flexible Manufacture Operation . Best Cost & Quality !



## Suzhou, China Factory

Boards & System

System Assembly/Testing/Packaging



## Taipei Leader Factory

System Assembly/Testing/Packaging



Taiwan + !  
Manufactures for  
Geopolitical Risk



## Shenzhen, China Factory

Boards & System

System Assembly/Testing/Packaging

## Malaysia

Boards & System System Assembly/Testing/Packaging



# ODM/JDM Service





# Assembly Line and Testing Equipment



Reflow oven



Assembly Line



X-Ray



Thermal and Dry Heat Test



Service life test machine



Click the line test Machine



# Tailor Made & Off-the-Shelf Solutions for Rapid Market Entry



- ISO 9001
- ISO 13485
- ISO 14971



## Private Label

Take our existing standard product and make it your own with custom labels, customized button colors and housing customizations to meet your requirements



## Function and Enclosure Customization

We can customize different modules to fit various applications such as barcode scanners, cameras, RFID or other functions °



## GMS/AER certification services

Offering Google-specific APIs with high app compatibility.

**GMS**





# Full ISO Standardization





## New - Partners List





# 6" Contactless mobile payment POS



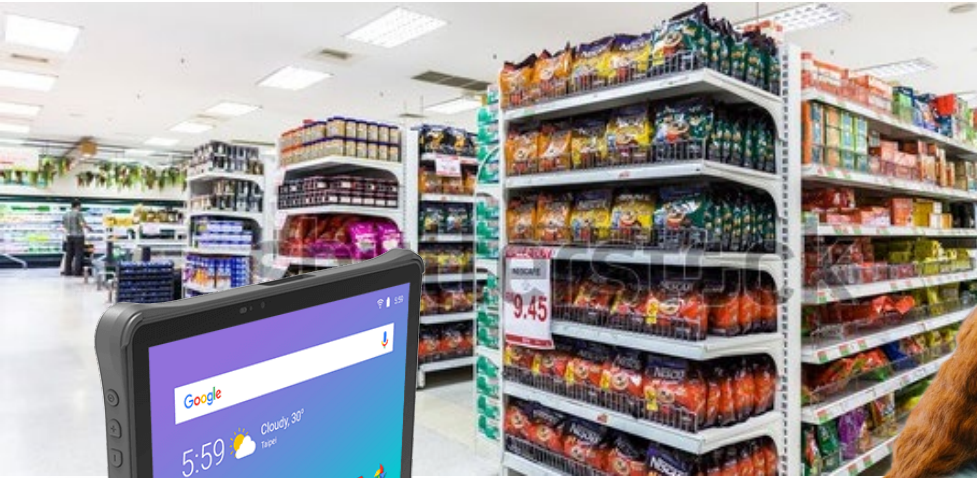
The PD60X series is a 6-inch rugged smart handheld device integrated with Android 13. It is powered by the **MediaTek MT8791 & 8781** chipset, featuring a 64-bit octa-core processor with A76 and A55 cores, clocking at speeds up to 2.0GHz, ensuring smoother multitasking. It supports Google GMS mobile services and receives long-term security patch updates from Google. It provides a versatile solution for environments such as **Retail** or **Warehouse** settings.

android **13**



- Provides better Wi-Fi roaming connectivity to support the warehouse environment.
- Superior barcode engine to support all kinds of reading applications.
- Hot swappable battery design.
- IP67 and Drop 1.5M and 1.8M with bump.
- The Longevity platform supports long-term security patch updates from Google.
- Dedicated NFC design for payment application.
- GMS certified.

# 10.1" Rugged Tablet Your Logistics Ally



Shoppers are more informed today and expect higher service efficiency and effectiveness. Designed for extensive use, AMobile HT10 industrial rugged tablet terminal for retail can be used for check-out, inventory management, shelf stocking, and price lookups, helping retailers take a more proactive and adaptive approach to enhancing customers' experience and operational efficiencies.

- Embedded 1D/2D barcode imager 8M front camera and 13M rear camera
- High mobility with multiple connectivity, including WLAN, BT, and WWAN
- Removable 10000mAh battery
- Hot-swappable battery system provides 24/7 mobile computing
- Fully rugged IP65 and 1m (3.3ft.) drop resistance
- Support Android 11 base.

**MEDIATEK**

android  
**11**



# Smart Handheld, Edge AI computing and SOM



Explosion Proof Inspection  
Handheld with Thermal Camera



Rugged Warehousing  
Handheld



Rugged Logistics  
& Retail Handheld



Rugged IoT HMI



Rugged Tablets



Thermal Imaging Solution for  
Industrial Safety



SOM/SBC/EVK  
off-shelfs

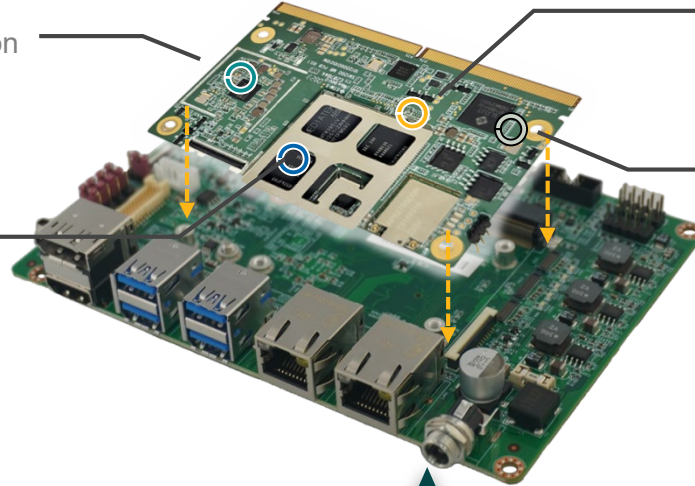
# SM1200 SOM Module follows SMARC 2.1 interface standard



48MP High Resolution  
Camera Support for  
CV



Power Efficient



Dual Core In Chip AI high  
speed AI compute speed



Support Android · Yocto  
· Linux and Ubuntu

**Interactive Signage**

**Industrial AI  
inferencing**

**WiFi 6 and 5G  
Support**



The SM1200 platform was developed using the **MediaTek® MT8395 (Genio 1200)** Processor. It is designed to suit industrial-grade applications with high graphics computing, edge AI, high performance, and low power consumption.



# **AMobile R&D Div. II**

**AI artificial intelligence technology for  
advanced images**

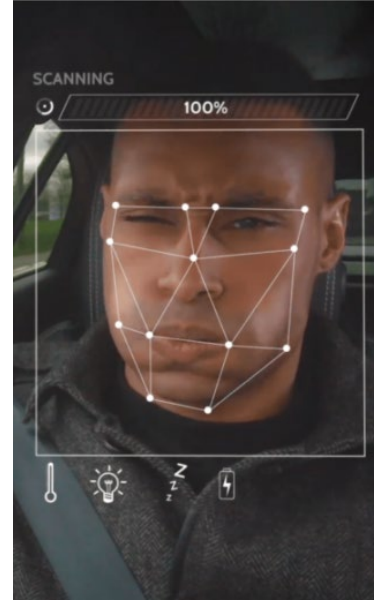
# MTK Platform AI Applications



Traffic jam inspection



Crowd control



Driver fatigue detection



Lost objects tracking

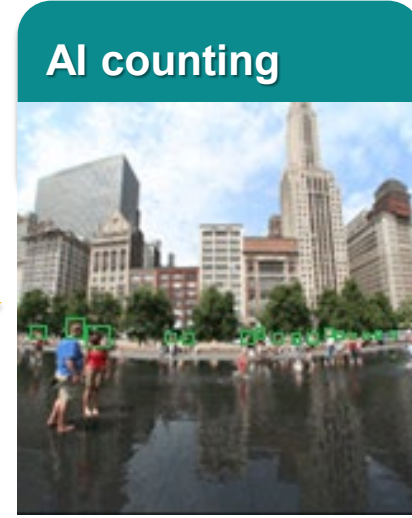
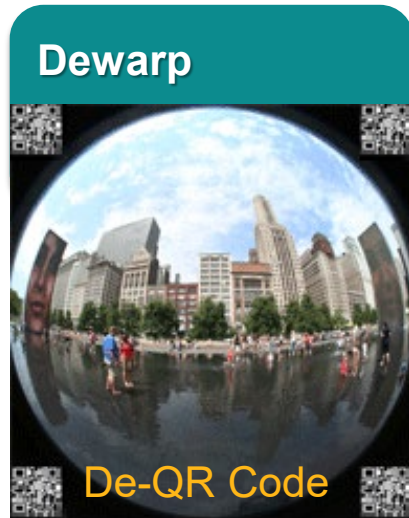


- 5MP camera with IR and standard POE power supply.
- 6" TFT LCM with operation interface
- Call and selection button designed for easier access
- IP66 protection and anti-spoofing detection
- APP remote control
- Adopted to wide-temperature, rugged-designed to increase service lifetime.



# Access control solution

MEDIATEK



Combining **Dewarp** images with data from other **sensors** and **AI** calculations outputs environmental scene information for each frame without affecting the image quality.



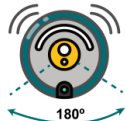
5M~8M  
camera



AI face or other  
objects  
recognition



DeWarp



135°~180 °  
fisheye camera



Save high quality  
output low quality



AI noise  
cancellation  
or suppression



Mobile APP  
remote switch



Wired or wireless  
private network  
transmission

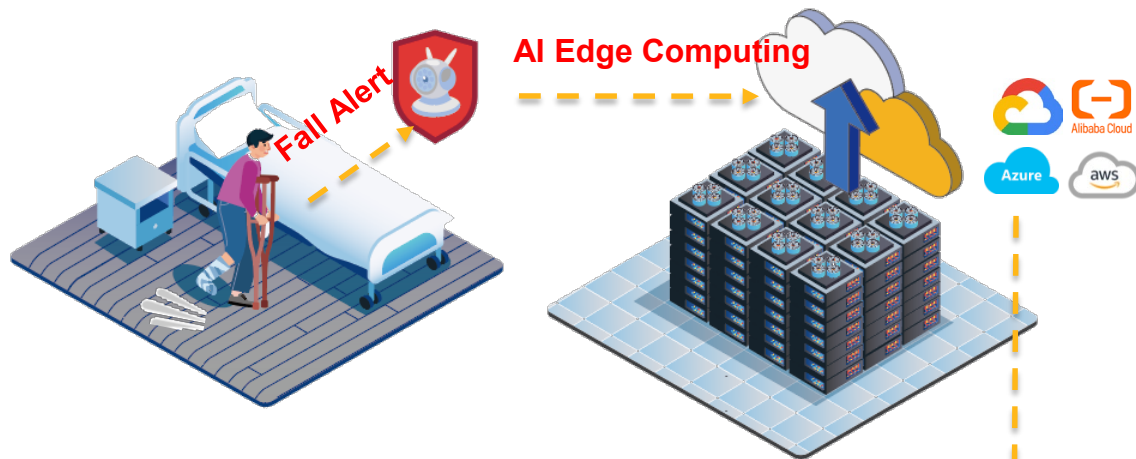


Vignette  
monitoring



liveness  
detection

# Edge AI computing - Fall detection solution



EVS-event base camera



APP notification



# Forklift Safety Solution



Building Connected Industry,  
Making Industry Connected



# Thank You