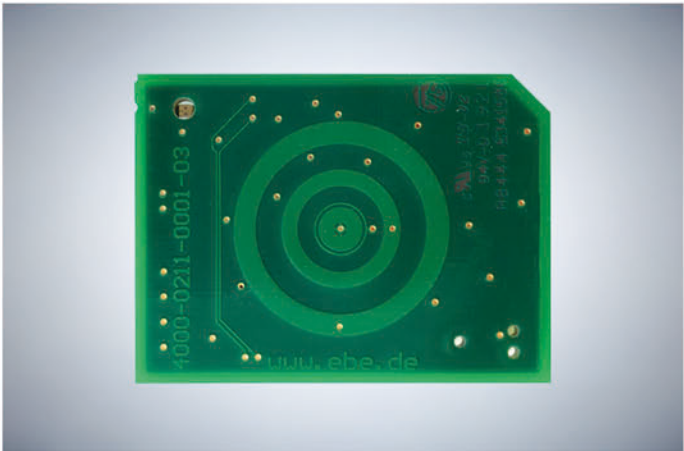


Capacitive Touch Sensors



EBE's touch sensors are a perfect fit for harsh environments. Thanks to their proprietary compensation technology these touch sensors reliably detect operator input. Even dirt, EMC interference or unintentional contact will not prevent secure operation of this sensors.

Technical Specifications

- Easy cleaning due to closed surface
- Dimensions: about 20 x 20 mm
- Function as Push Button or Switch
- Mounting choices include clips, screws, glue or tape
- Various options available:
 - Programmable LEDs
 - Potential-free contact, optional SPI and other various options available
 - Optical and/or haptic feedback options



EBE Elektro-Bau-Elemente GmbH
Sielminger Strasse 63
D-70771 Leinfelden-Echterdingen

Phone: +49 (0) 7 11- 7 99 86-0

E-Mail: info@ebe.de
Web: www.ebe.de