

XINSUN DISPLAY

鑫陽整合顯示

鑫陽電子



DISPLAY SOLUTION
INTEGRATION PROVIDER

COMPANY HISTORY

2010

Xin-Sun Electric establishing in Kaohsiung, Taiwan

2011

LCM Module factory obtained ISO 9001:2008 certification

2011

TP Dong Guan factory join venture (ISO 9001:2004)

2014

China S.Z. LCM factory join venture(ISO 9001:2000)



2016

Set up new Department for expanding overseas business



2020

Rename to XINSUN Display Integration Ltd.

2023

USA sales representative set up



COMPANY PROFILE

2010

Establishing factory in Kaohsiung, Taiwan

Land

**5000 square meter including
China factory**

Employee

**100 including China and Taiwan
80/20**

Products

**Mono/Color, TFT,
OLED, Touch screen
Optical bonding**

R & D

**Our technical team has more
than 20 years in Display Design
and M.F.G, Including integrated
LCD with main board**

**Main
market**

**Europe, USA,
Asia, China,
Taiwan**



COMPANY OBJECTIVE

At XINSUN Display,

We concentrate on Quality, Professional, and Elasticity of market demand as our core competence.

Since the company was established in 2010 ,

Our main missions are:

- 1. Continuously improve our R&D, Manufacturing, Sales/Service Capability, to provide value to our customers in product quality, cost of ownership and supply speed.**
- 2. Our ultimate objective is to satisfy our customers, employees and shareholders.**
- 3. “Just Do” what customers need and meet their demand.**

Our market:

- 1. Industrial Devices**
- 2. Medical Devices**
- 3. Instruments**
- 4. High specification and quality**



IDEAS OF WHAT WE DO

@SERVICE

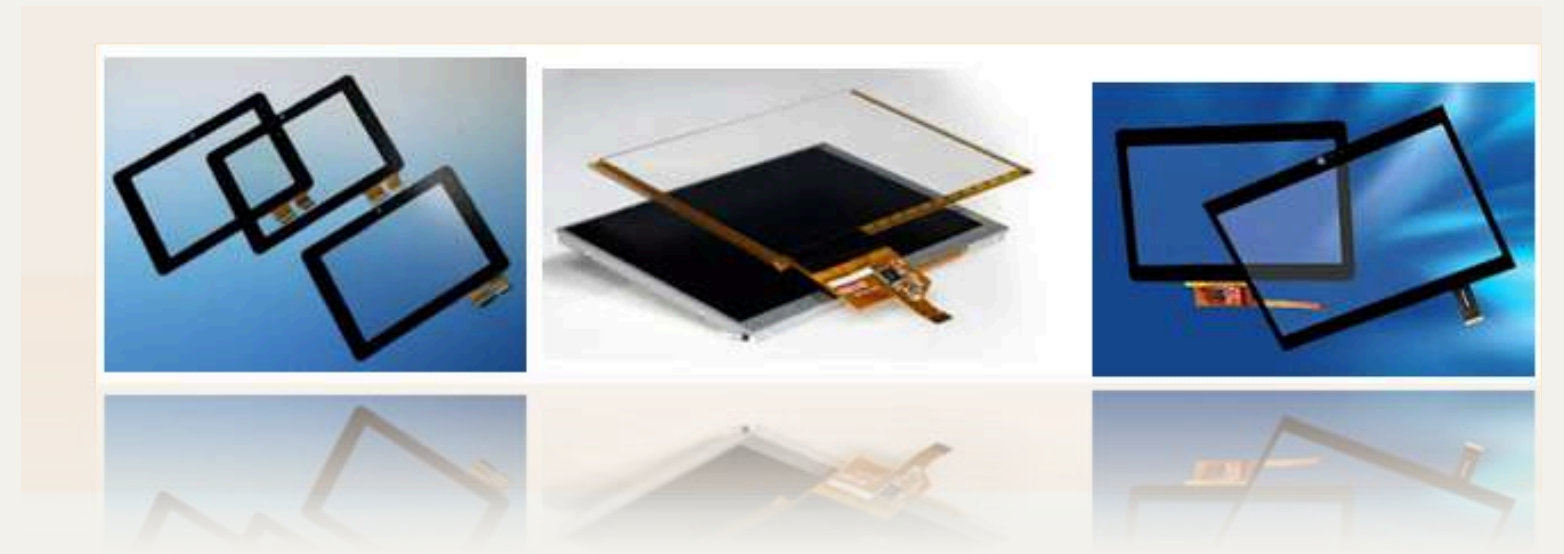
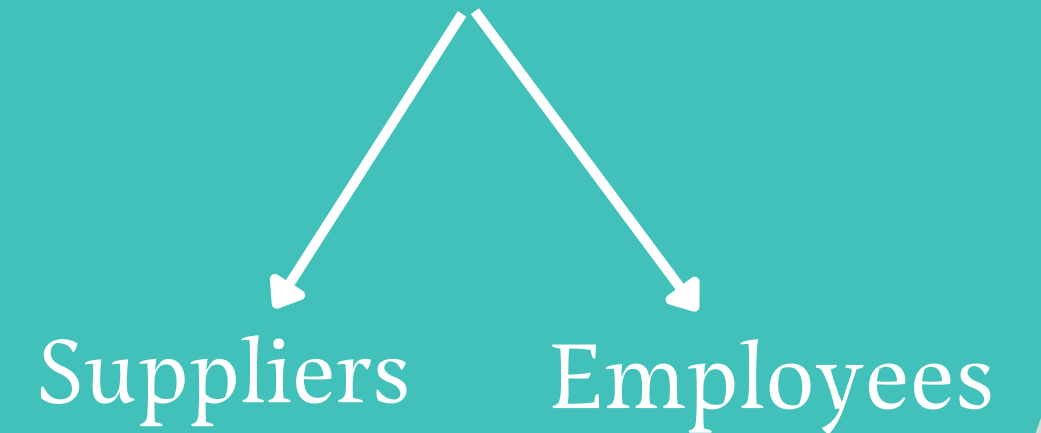
To fulfill customer's expectation in lead time, quality and price.

@TECHNOLOGY

To keep the design and innovation elasticity for reaching cost effective purpose.

@MUTUAL BENEFIT

Customers



ORGANIZATION CHART

Board of Director: Steve Chen

XINSUN Electric :
Steve Chen

XINSUN Display :
Laurence Yang

D.G PCAP
factory

- 4 wires RTP
- 5 wires RTP
- PCAP(1"~32")
- PCAP
Controller
board

D.G TFT
factory

- From 1.44"
~21.5"
- OEM
- ODM

Taiwan
Design

- MonoChro
me lcd
- TFT design
- TFT
integrated
with AD
board/HDMI
/HMI / USB
board

Domestic
sales

Sales

Overseas
Marketing (Agent)

- **China DG: Touch Panel Factory**
- **Taiwan KHH: TFT related module
integration & design**



China Factory:

1. COG Bonding& SMD

2. Size:

2.1 Monochrome LCD, Color TFT LCD : 1.44" ~ 21.5"

2.2 Use the large-size FOB from the original panel maker for the backlight& driving board self-assembling: 17" to 55"

TP Factory:

- Capacitive Touch Panel size from 1.8"to 55"**
- Resistive Touch Panel (4WIRES,5 WIRES)**
- Large Size Panel Assembling**



Taiwan (Kaohsiung) Factory:

1. Brand of Panel Selection: Innolux, BOE, Hannstar, IVO
2. Mainly assist customers on the **display module design, system integration, assembling**, also provide AD board, HDMI board, and cables to be compliant with modules. We also help customer on more complex technical support, mechanical integration, and incoming quality control based on the needs.
3. We can also assist customers on **firmware-related design**.
4. Assembling and high quality processing: Our products are featured in **customized design**, we can provide the FOB (open cell) back-end assembling and design, layout design, and mechanical design.
5. Per the product quality inspection, we will do the **full inspection before assembling, and OQC** for the integrated and assembled module.
6. We can also supply **high brightness TFT** based on customers inquiries.
7. Product Application: Blood Glucose Machine, HVAC, Mixer, Coffee Machine, EV charger, ATM, POS Machine, Dashboards, etc.
8. Other features:
 1. Specializing in providing the diverse products for the niche market, quality over quantity.
 2. Domestic market: Prompt response and quality service.
 3. Number of Staff: RD&QC: Around 4 people , Operator : 10 people



QUALITY POLICY

a) Supply Chain management :
Approved by XSE, and audit regularly

b) Incoming material inspection:
AQL=0.25

c) Outgoing inspection OQC 100%

d) IPQC

e) ISO9001



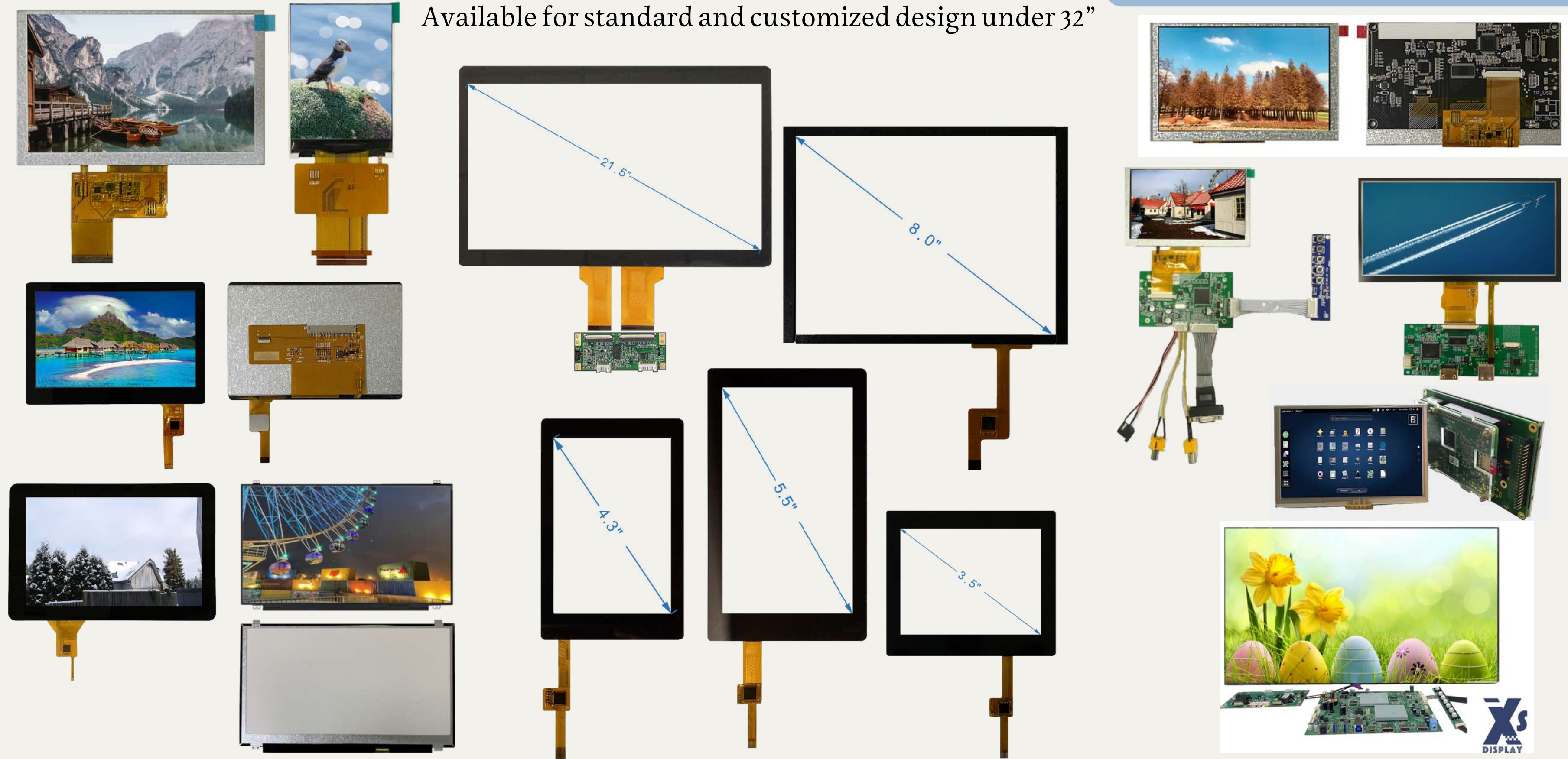
PRODUCT AND SERVICE

TFT : from 1.8" ~ 21.5"

RTP (4.5 wires) /PCAP touch

PCAP Controller , AD BOARD,
HDMI BOARD for 4.3"~32"

Available for standard and customized design under 32"



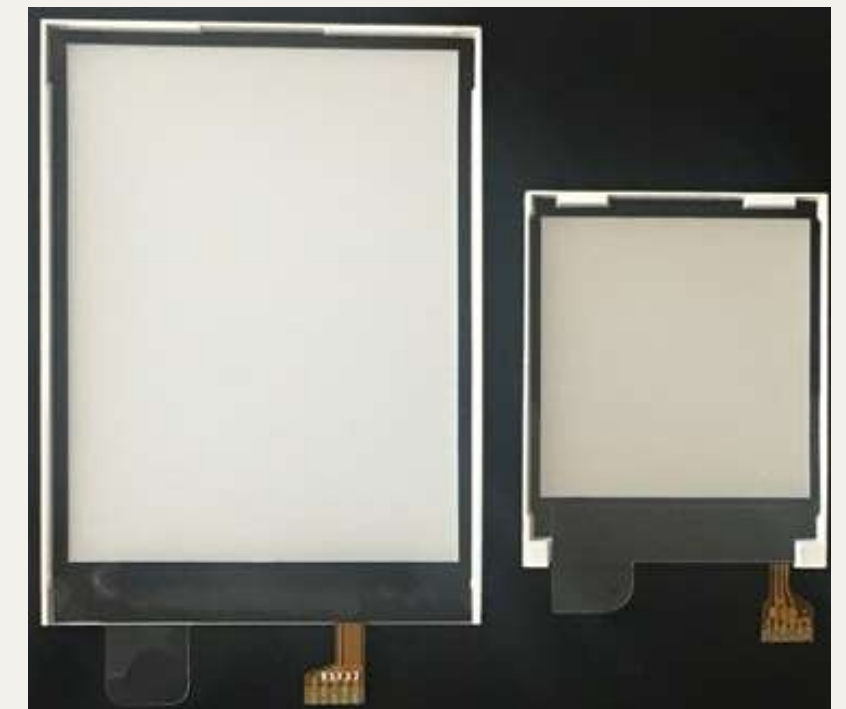
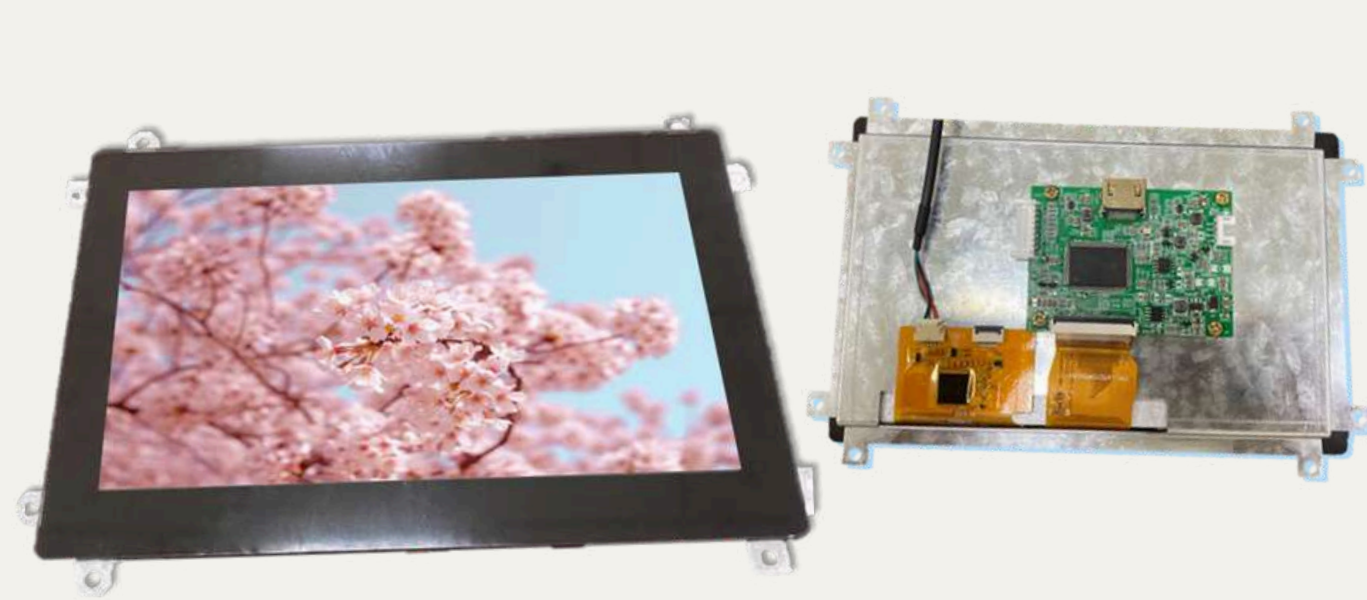
PRODUCT AND SERVICE

Industrial Open frame/
UART Display

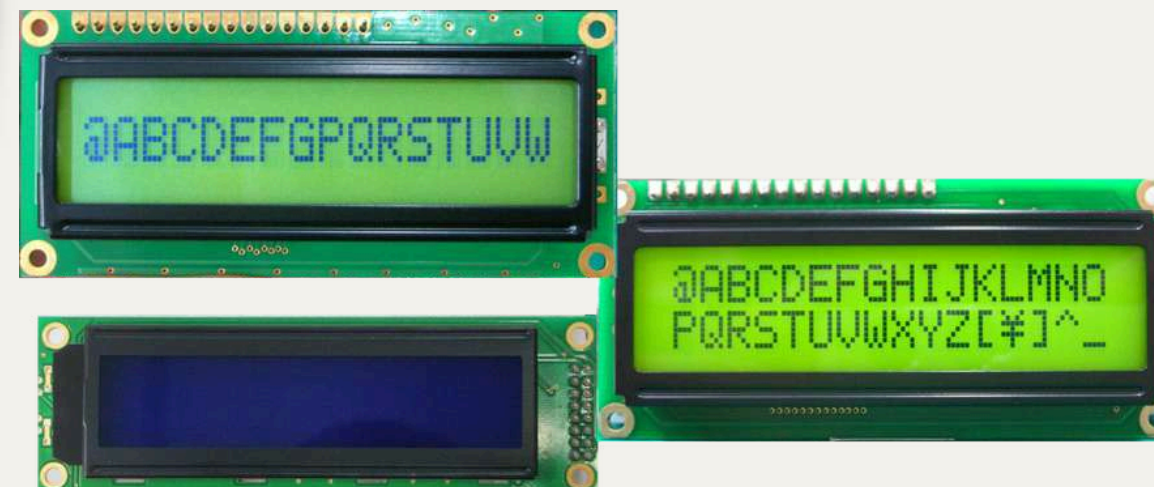
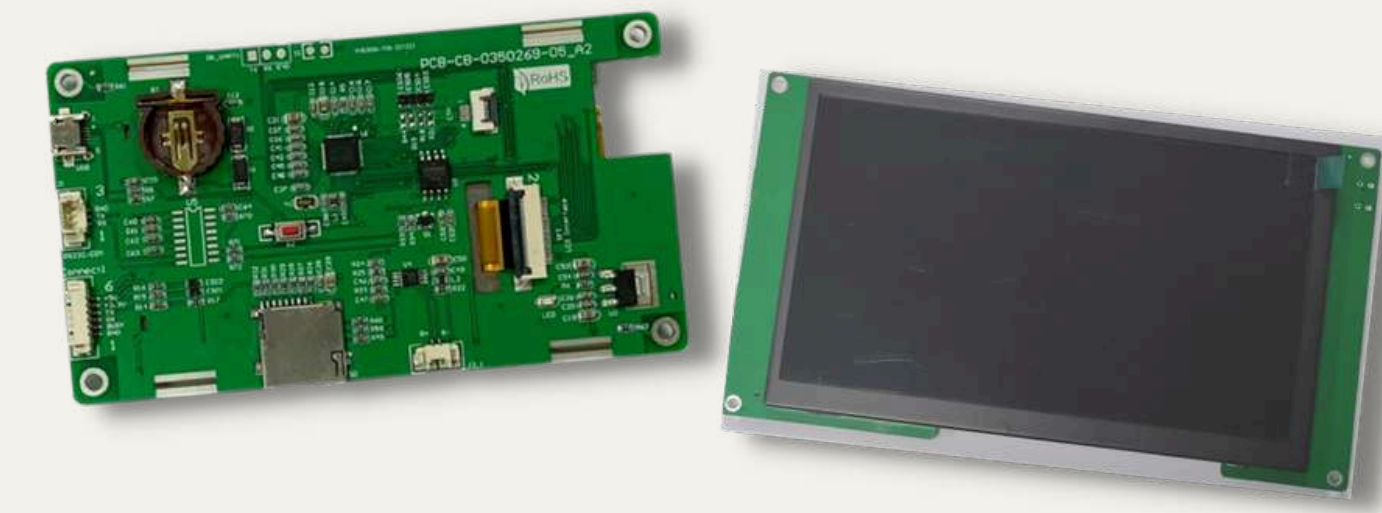
Monochrome VA, FFSTN LCD
(240 duty max)

Backlight

Available for standard & customized design



Operation Integrated System
development including Android
board, Raspberry Pi, SBC



MARKET/SOLUTION

1. Media & Audio



15.6" for
Mixer



2. Automation



4.3" for Fish
Detection

MARKET/SOLUTION

3. Industrial

10.1" for HVAC controllers



6.8" for Fiber sensor solution



7" for Outdoors Fuel Dispenser



LCD for EV Charger



12.1"~32" FOR POS MONITOR & KIOSK



MARKET/SOLUTION

4. Medical

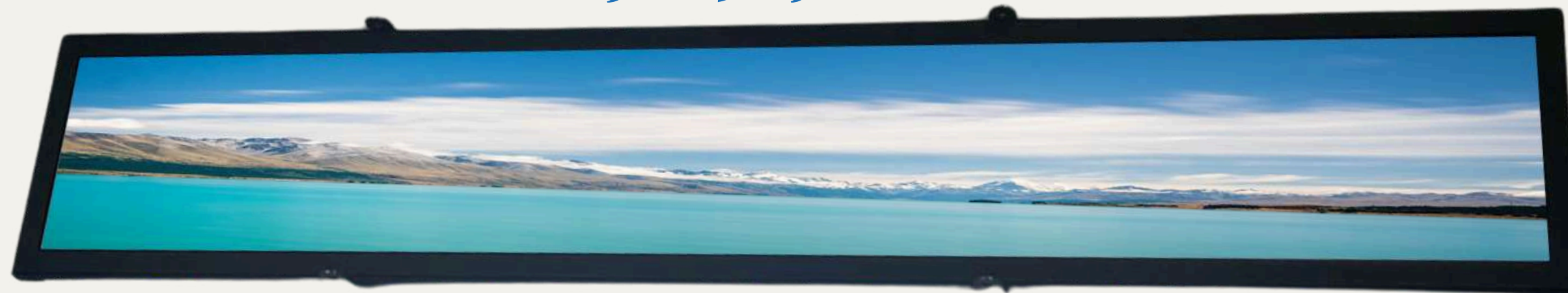


Monochrome & Color
display for Blood
Glucose Machine



5. Stretched LCD (Resized lcd)

12.3"~48.5"



6. Beverage Application



8" for Coffee Machine

Factory Capacity

Display

Production	Lines	Volume
FOG/COG/Assembly	6	2kk/M
Optical bonding	4	400k/M

Touch panel

130K/M (For 7" PCAP)
100K/M (For 10.1" PCAP)
70k/M (For 15.6"PCAP)

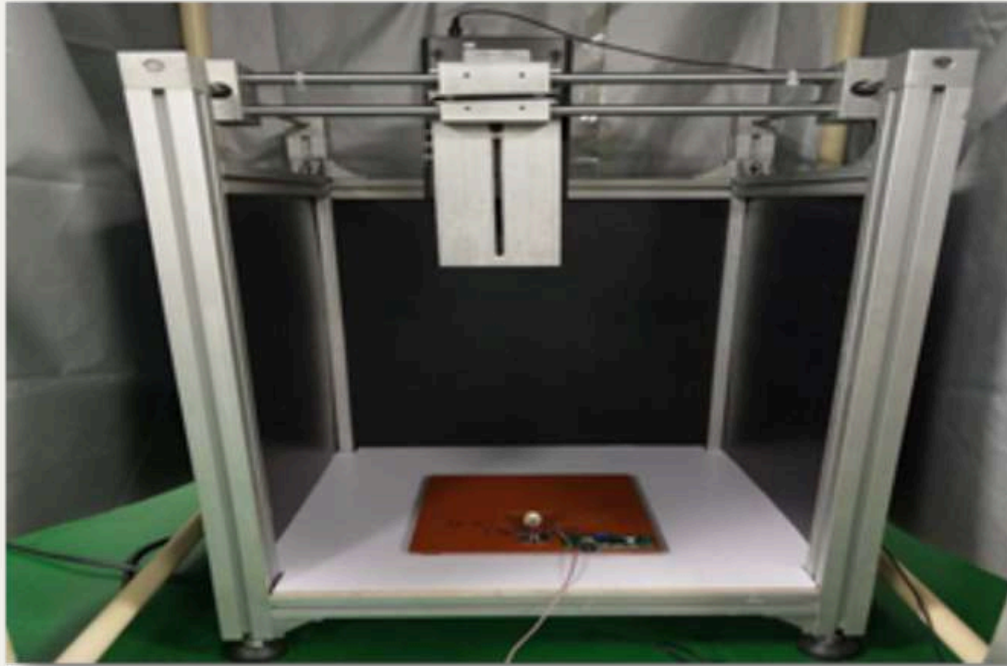


MAIN SUPPLIERS FOR TP MATERIAL



Raw Material	Supplier
ITO Film	Jiangsu Rijiu
ITO Glass	Token Sciences / Csg Holding
Cover Lens (Glass)	AGC GROUP / Corning Gorilla Glass
Conductive Silver Paste	ASAHI
Printing Ink	SEIKO
OCA	MITSUBISHI
IC	ILITEK / EETI / Goodix / Focaltech
ACF	HITACHI
Tape	3M Or SEKISUI

QUALIFICATION EQUIPMENTS



BL Brightness Test (BM-7A)



High Temperature and Humidity Test



Constant Temperature and Humidity Test



ESD Test



Simulative Vibration Test



Salt Spray Test

PRODUCTION FACILITIES



Automatic COG+FOG machine



Full-Automatic Grinding and Patching machine



TP: OCA lamination machine

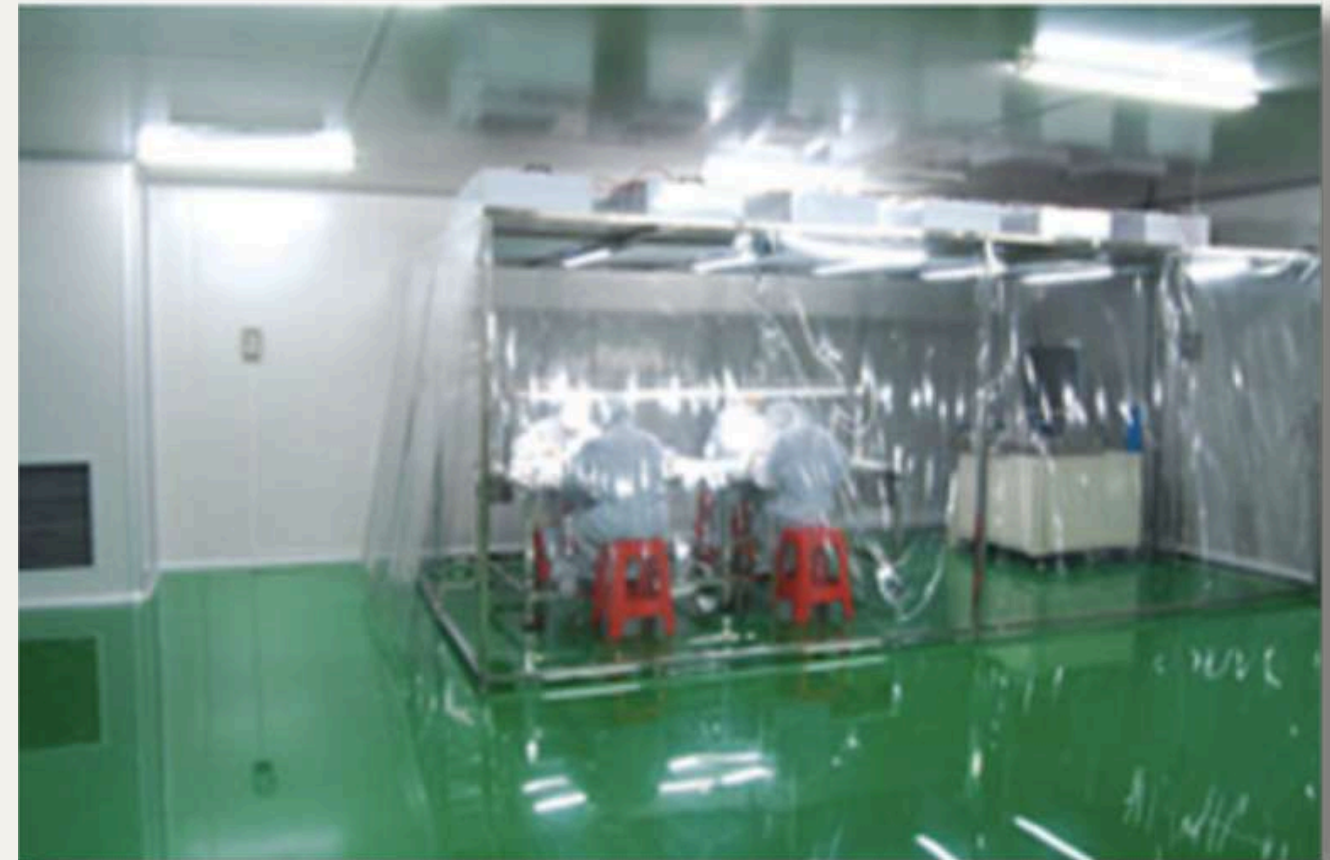


Backlight Assembly Machine



TP: Full lamination machine

PRODUCTION FACILITIES (T/P)



CERTIFICATION

CERTIFICATE



The Governing Board of
ARES International Certification Co., Ltd.
Hereby Grants To:

XIN-SUN ELECTRIC CO., LTD.

1F., No. 66-16, Anlin Rd., Yanchao Dist., Kaohsiung City, Taiwan (R.O.C.)

Has been assessed and found to be in accordance with the requirements of
standard detailed below
ISO 9001:2015

Scope
**Design, Manufacture, Assembly and Sales for LCD, LED and
Related Parts.**

Certificate No.: ARES/TW/I2104113Q
Certificate Issue Date: 2024-04-27
Registration Expiration Date: 2027-04-26

The time interval between each surveillance audit and the last on-site audit shall not exceed 12 months,
and the organization must obtain "surveillance audit approval notification" issued by ARES to ensure the
validity of the certificate.



Authorized by :

A handwritten signature in black ink, appearing to be "J. Chen", written over a horizontal line.



ARES International Certification Co., Ltd.
No.12-2, Ln. 187, Wenping Rd., Anping Dist., Tainan City 708, Taiwan
TEL / 06-295 9696 (Rep. Line) FAX / 06-295 9667
www.ares-registration.com



CERTIFICATE

This is to certify that
Chen Yu-Pin

Has completed with honors

A course on **Advance Patent (patent engineer)**

Held from August 6, 2006 to September 23, 2006

Under the Intellectual Property Training Program

Commissioned by the Taiwan Intellectual Property Office,

Executed by the Taiwan Intellectual Property Training Academy

And implemented by NKFUST Graduate Institute of Science and Technology Law

Sheng-Lin Jan

Director

Taiwan Intellectual Property Training Academy

Jason Tien Chou

Director

NKFUST Graduate Institute of Science and Technology Law

September 2006



CONTACT US

**XINSUN DISPLAY
INTEGRATION LTD.**



TEL: +886-3-6587010/11



Facebook: Xinsun.Display.Integration



Linkedin: Xinsun-display-integration-ltd



WebSite: www.xsdisplays.com



**EMAIL: Sales@xsdisplays.com(TW sales Team)
Phoebe@xsdisplays.com(USA sales)**

Address:

(Factory) 1 F., No. 66-16, Anlin Rd., Yanchao Dist., Kaohsiung City 82443, Taiwan

(Office) 5F., No.32, Chenggong 13th St., Zhubei City, Hsinchu County 302050, Taiwan

