



Explore the world with cameras

Union Image

Company Profile



MISSION

Through innovative visual solutions, we aim to co-create a future where various industries become more intelligent.

VISION

To become a global leader in AIoT visual solution provider.

VALUES

Customer



Putting customers at the center, we provide customized solutions and services.

Agility



Continuous learning, efficient collaboration, mission accomplishment.

Responsibility



Daring to take on challenges, and striving for improvement.

Value



Guided by value creation, pursuing excellent performance and sustainable development.



Overview

NO.1

AIoT market share in China

Explore the world with cameras



R&D



Shenzhen R&D
Center



Taipei R&D
Center



Manufacturing



20,000 m²
Shenzhen Factory



25,000 m²
Weihai Factory



Sales

- Shenzhen
- San Diego
- Beijing
- Taipei
- Shanghai
- Suwon

Milestones

Explore the world with cameras



2016

Headquarter

R&D and Production Hub
for Camera Modules.



2014

Establishment of
Union Image Co., Ltd.



2018

Wei Hai Union Image Co.,
Ltd. Founded

2019

Shipment Volume of 92KK, Ranked
in the Top 10 Domestically



2020

Shipment Volume Exceeding
150 Million Units



2021

Camera Supermarket

Camera Modules
Visual Solutions
Finish Goods



2022

Digitalization and Flexible
Manufacturing



2024

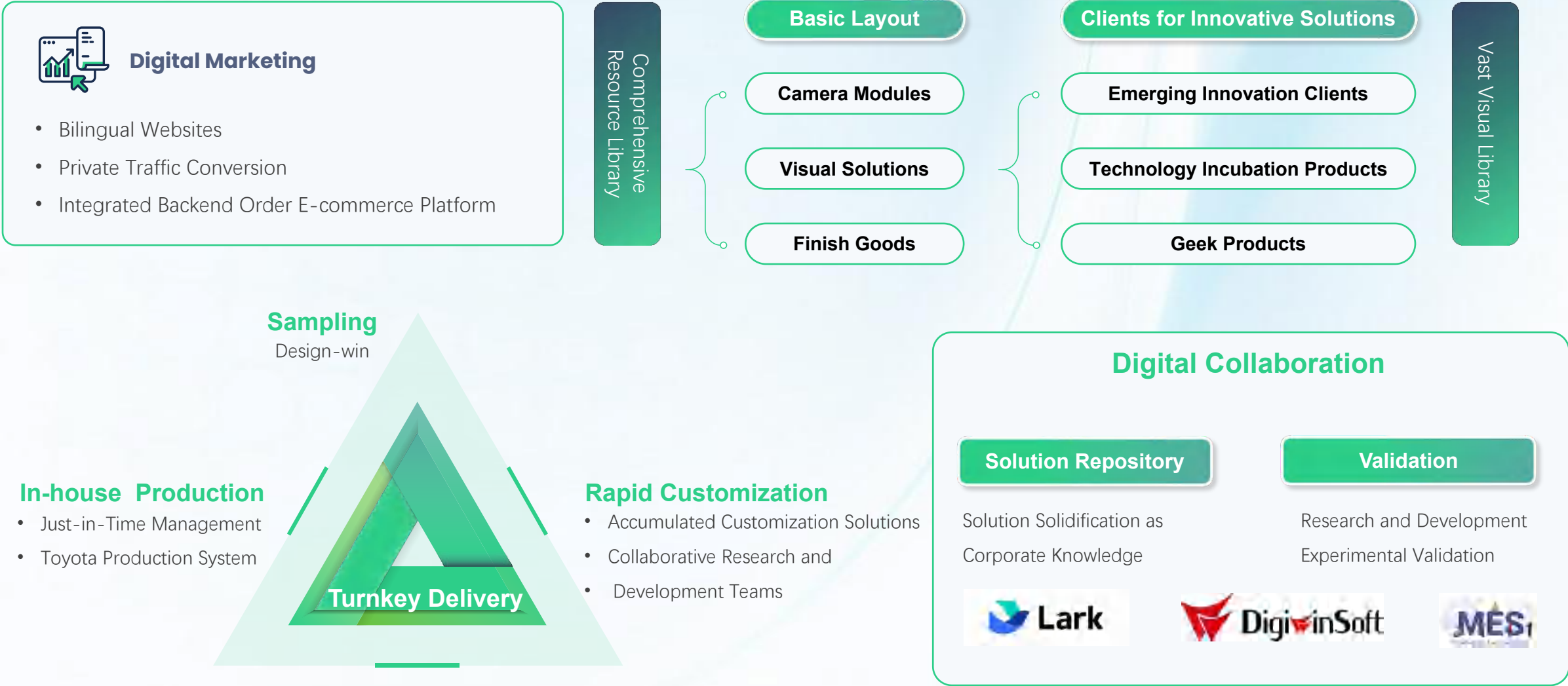
Overseas

Manufacturing
Sales



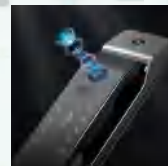
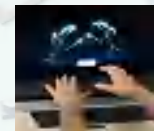
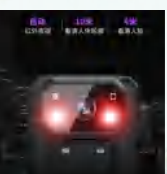
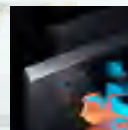
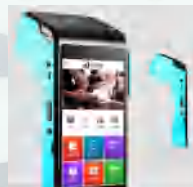
Digitalization and Flexible Manufacturing System

Explore the world with cameras 

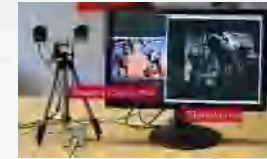
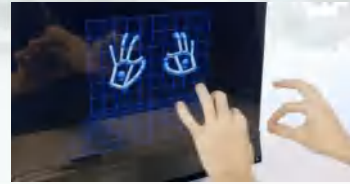
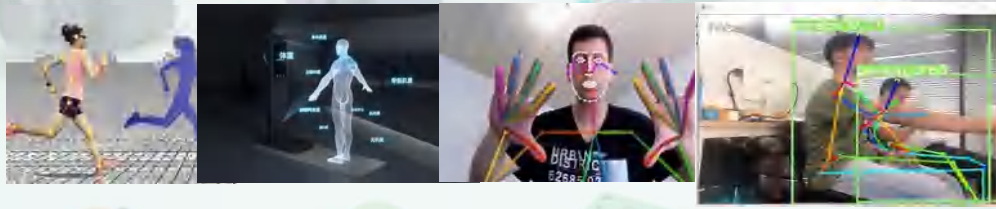




Camera Modules



Explore the world with cameras



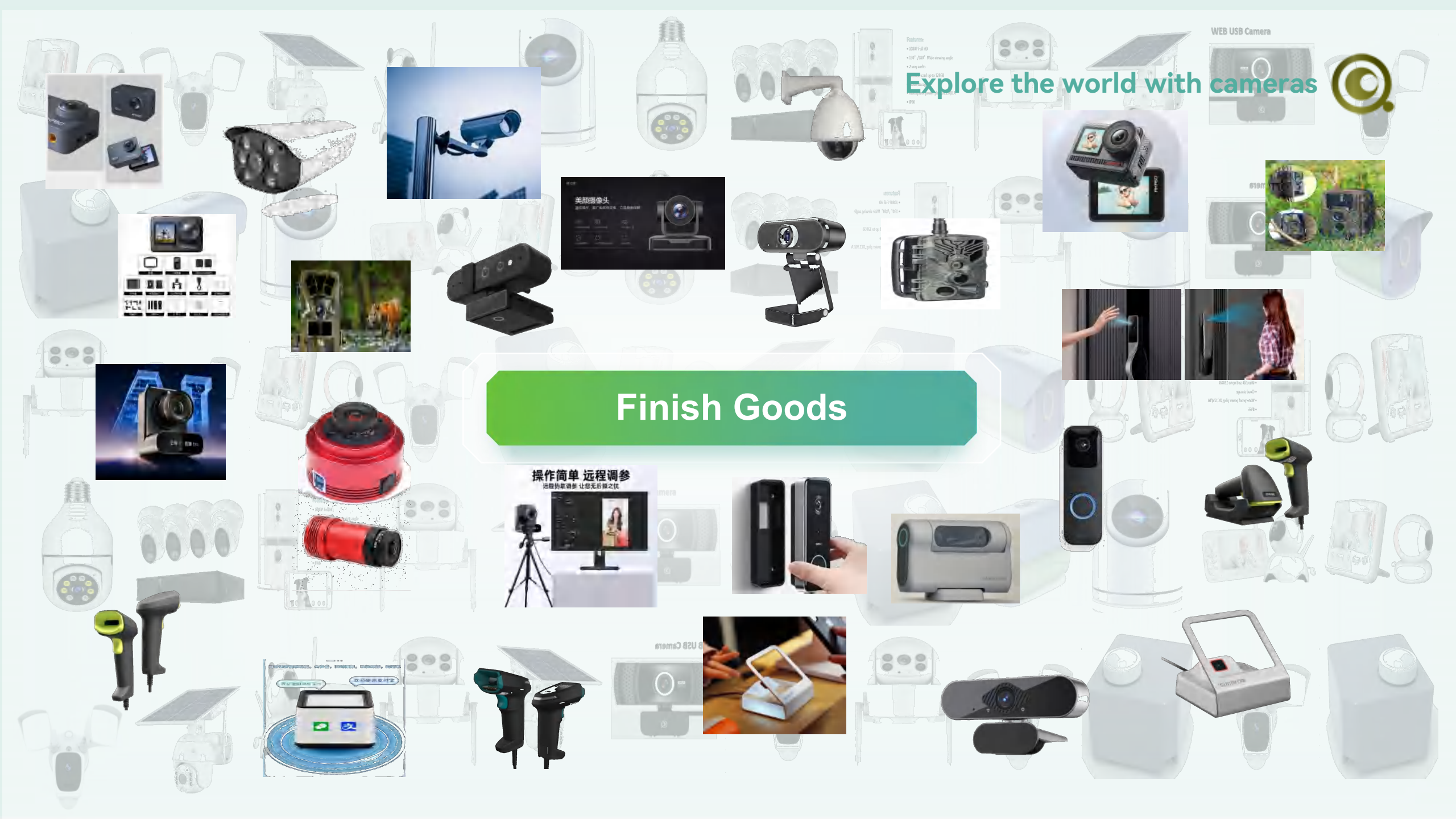
Visual Solutions



Explore the world with cameras



Finish Goods



Customers

Explore the world with cameras



WYZE

DATALOGIC

sonim

EZVIZ 萤石

QUECTEL

网易 NETEASE

ORBBEC

奥比中光 ORBBEC

Unitree 宇树科技

Baidu 百度

AIPEER

usmile 笑奇加

VITURE

Seuic 东集

FOXCONN

Honeywell

TCL

CVTE

360安全卫士

新大陆时代科技 Newland Era Hi-Tech

Kaadas

lockin 鹿客

Urovo 优博讯

Lenovo

Raytron 睿创微纳

JABIL

ZTE

CNCE 中诺通讯

博坦 Potensic

KONKA 康佳

NEXIGO

suprema

TOSHIBA

T-Mobile

POSITEC

ingenico

XCHENG

MEIG 美格

FIMI

Data

wistron

Rokid

KEYENCE 基恩士

QOSU

SUNMI

COMPAL IoT

nubia 红魔

THINKWARE

SAMSUNG

Fibocom

Bambu Lab

Govee

MobWare 麦博韦尔

Hytera

zomai

ASUS

ECOVACS

ASUS

DREAME 追觅

vivo

CREALITY 创想三维

EPSON

LUXSHARE ICT

F&D 奋达科技

TINNO 天玑

enabot

Shark NINJA

LONGCHEER

Transsion

ASUS IoT

PICO

ZEROZERO

AUTEL

AOC

uFone

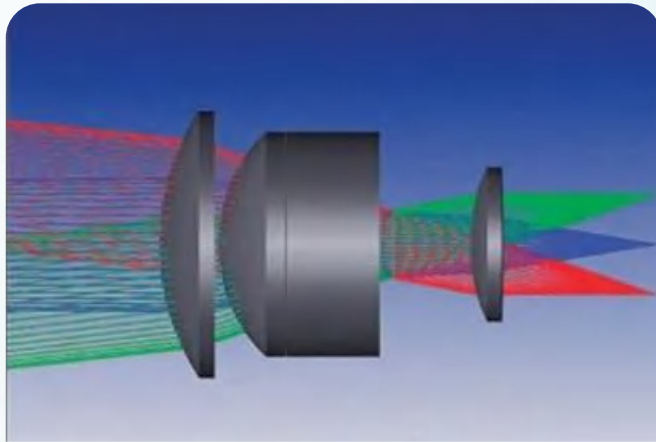
酷赛集团

Optical System Customization

Explore the world with cameras

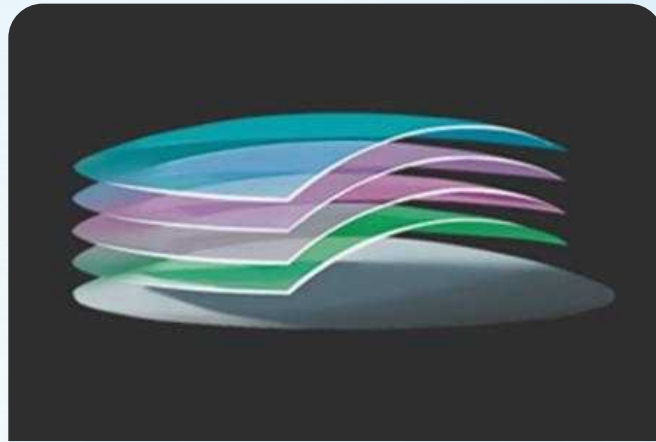


Develop, design, and customize lenses and optical products of various parameters according to customer requirements.



Optical System Evaluation and Design

Optical system simulation to evaluate and recommend the best optical design solution for customers.



Optical Lens Design

Customized design of various optical lenses, such as LED and laser light focusing lenses.



Optical Lens Structure Design

Custom development of optical lenses to meet different application requirements of customers.

System Development Technology

Explore the world with cameras



Industrial Design

Professional ID design team, providing user-centric industrial design solutions.



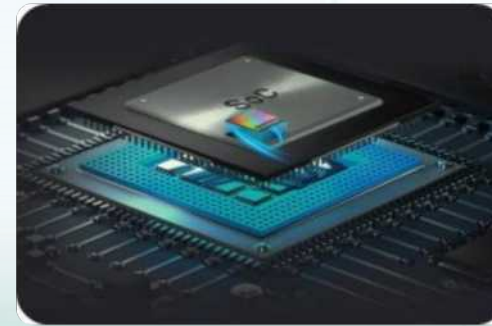
Hardware Development

One-stop hardware development services, offering professional hardware intelligent platform solutions.



Software Development

SoC solutions, enabling all system functionalities, including connectivity capabilities, with the cost of a single module.



ISP Tuning

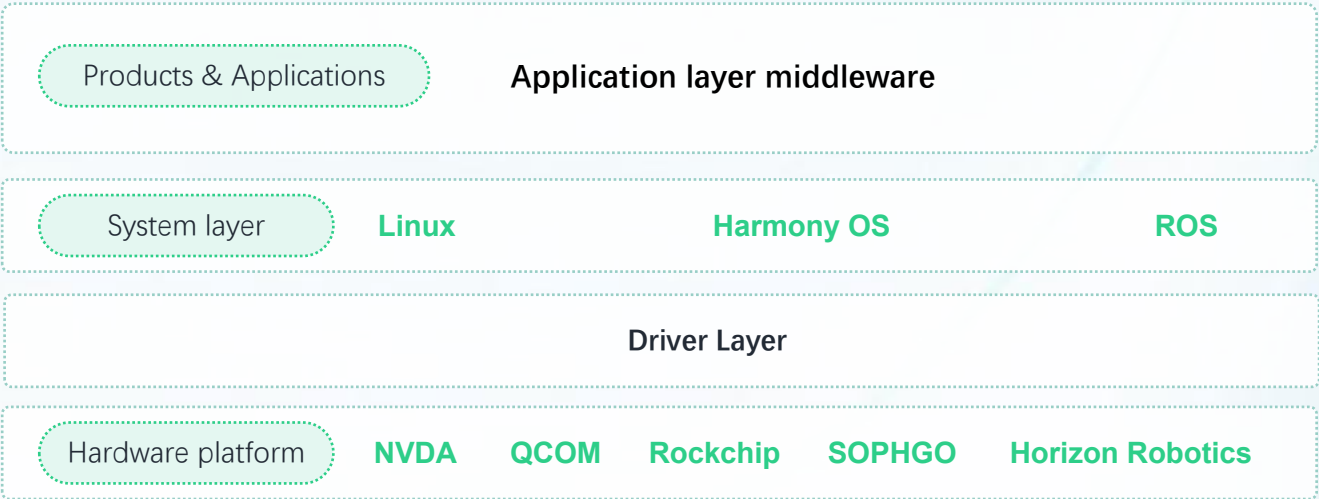
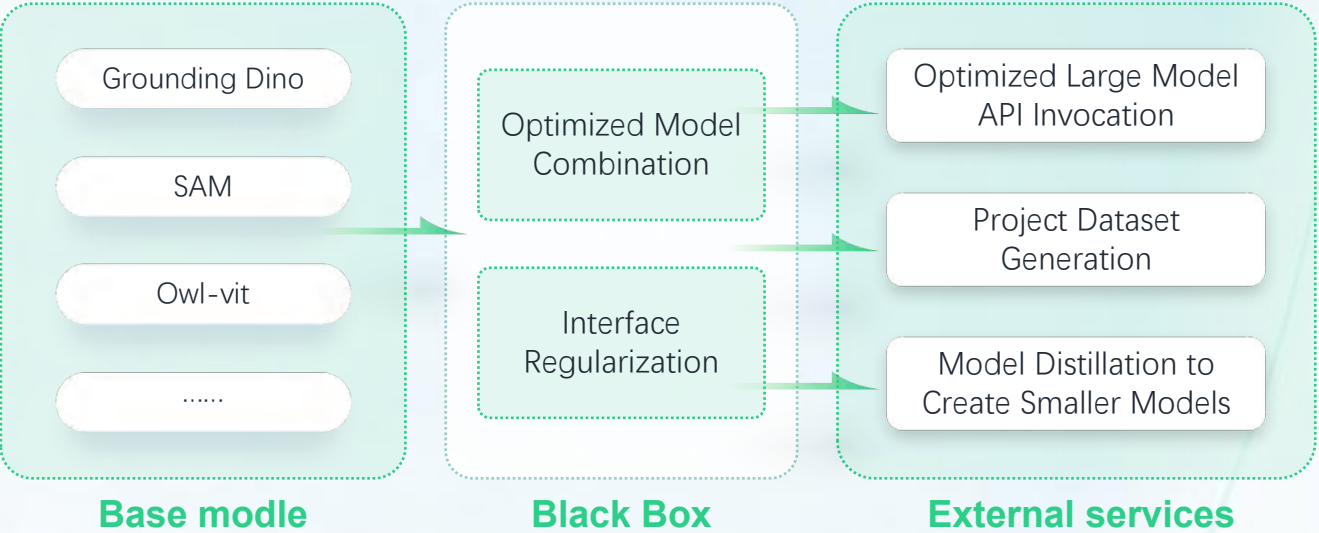
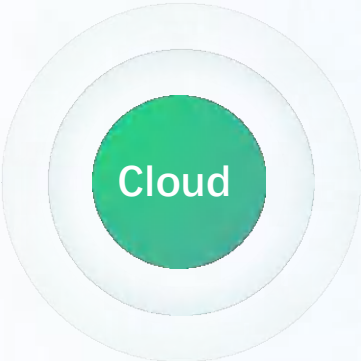
Controls for exposure, white balance, contrast, saturation, color correction, high dynamic range, and image range.



System-level product development technology applied in the AIOT industry.

LLM Training and API Application Platform

Explore the world with cameras 



AI training technology path

3D Scanning Modeling

Low-speed obstacle avoidance

SLAM

Limb Gesture Recognition

Scenario analysis

Everything is recognized

.....

Application scenarios

- Smart terminals
- Industrial vision
- Smart security
- Smart home
- Smart wearables
- Smart Payments
- Medical diagnosis
- Smart logistics
- Smart education
- Autonomous driving

Application scenarios

- Smart terminals
- Industrial vision
- Smart security
- Smart home
- Smart wearables
- Smart Payments
- Medical diagnosis
- Smart logistics
- Smart education
- Autonomous driving

Introduction to the laboratory

Explore the world with cameras



Image Test Room



Image Test Box

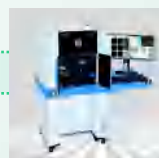


Flare Test

Image Test Chart



Lens Test



R&D Testing Equipment



Digital Oscilloscope



Spectrum Analyzer

DC Electronic Load



Quadratic Element Measure



Manufacturing & Service System

Explore the world with cameras



ERP Resource Management System



Wide-Angle AA



High-Precision SMT



WB Equipment



MES Manufacturing Execution System



Class 1000 Clean Room EOL



DB Equipment



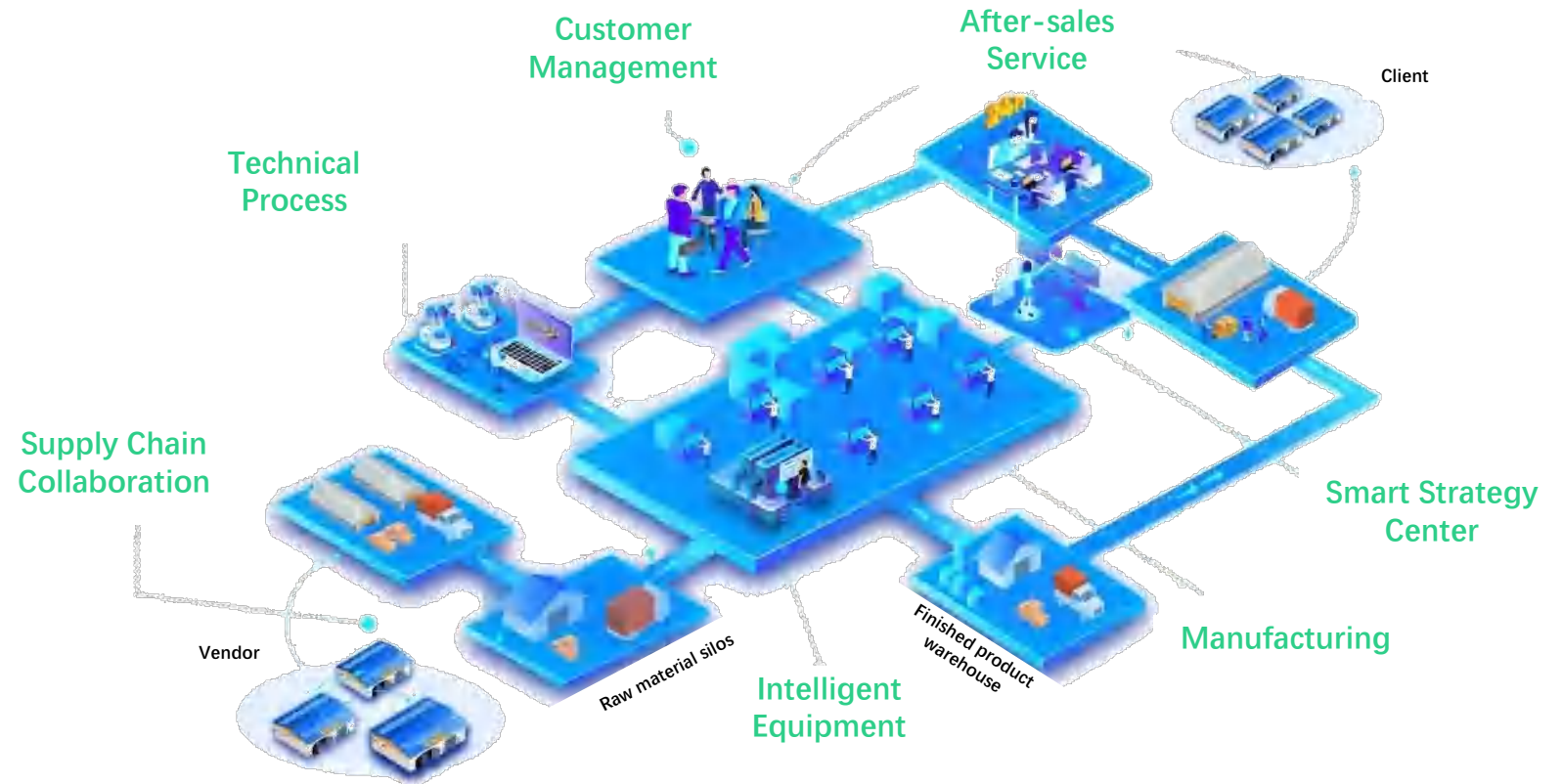
CRM/PLM Management System



Class 100 Clean Room COB



Complete Assembly Production Line



Certification and System

Explore the world with cameras



Production Management

Strict Production Process Quality Control Management



Test Management

Precise Testing and Shipping Management



After-Sales Management and Control

"2485" After-sales Response Standard



Quality Objectives

"0 defect" as the ultimate goal



Quality Standards

Compliant with ISO9001

Manufacturing

Explore the world with cameras 

S H E N Z H E N



Address
Building A2, Dingbao Hong Green
Hi-Tech Park, Shiyan Street,
Bao'an District, Shenzhen, China.

Shenzhen	Production Capacity	Shipment
Camera Modules (pcs)	10KK/M	6KK/M
Visual Solutions (sets)	500K/M	250K/M
Finish Goods(sets)	300K/M	150K/M

W E I H A I



Address :
Zone B, Blue Entrepreneurship
Valley, Nanhai New District, Weihai
City, Shandong Province, China.

Weihai	Production Capacity	Shipment
Camera Modules (pcs)	20KK/M	15KK/M



THANKS!

To become a global leader in **AVT** visual solution provider

