

zachari  
oudaki gmbh

development  
prototyping  
distribution



LinkedIn

CORPORATE PRESENTATION

**PACKAGING BY PROFESSIONALS FOR PROFESSIONALS.**

Our company is entirely family-owned. This means we are independent and can make our own decisions quickly. First-class quality and outstanding service are always our top priorities. At work, we are passionate about creative ideas and welcome every new challenge that drives us to develop innovative solutions.

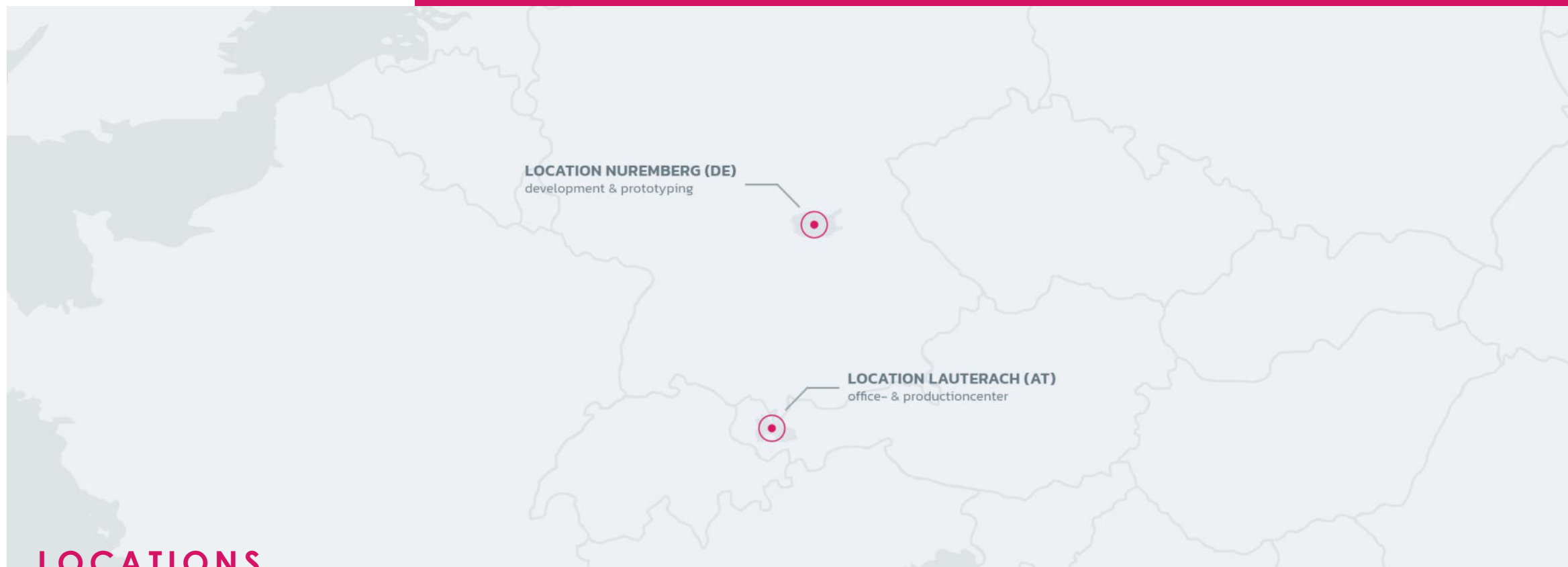
**FAMILY-RUN, INNOVATIVE, BASED ON PARTNERSHIP**

## COMPANY HISTORY

Zacharioudaki GmbH was founded in 2013 and started out with a big idea and a small team. The aim was to optimize the shipping process with new packaging solutions. From the very beginning, we were always looking for individual products and developed many of them ourselves. The trigger for founding the company at the time was a customer request. We were looking for a partner who was fast and flexible to support the development and provision of an individual logistics concept. Today, our team consists of 18 experts who bring a wide range of skills to the table. Our head office is located in Bavaria, with another in Austria. Zacharioudaki GmbH is still a family-run.

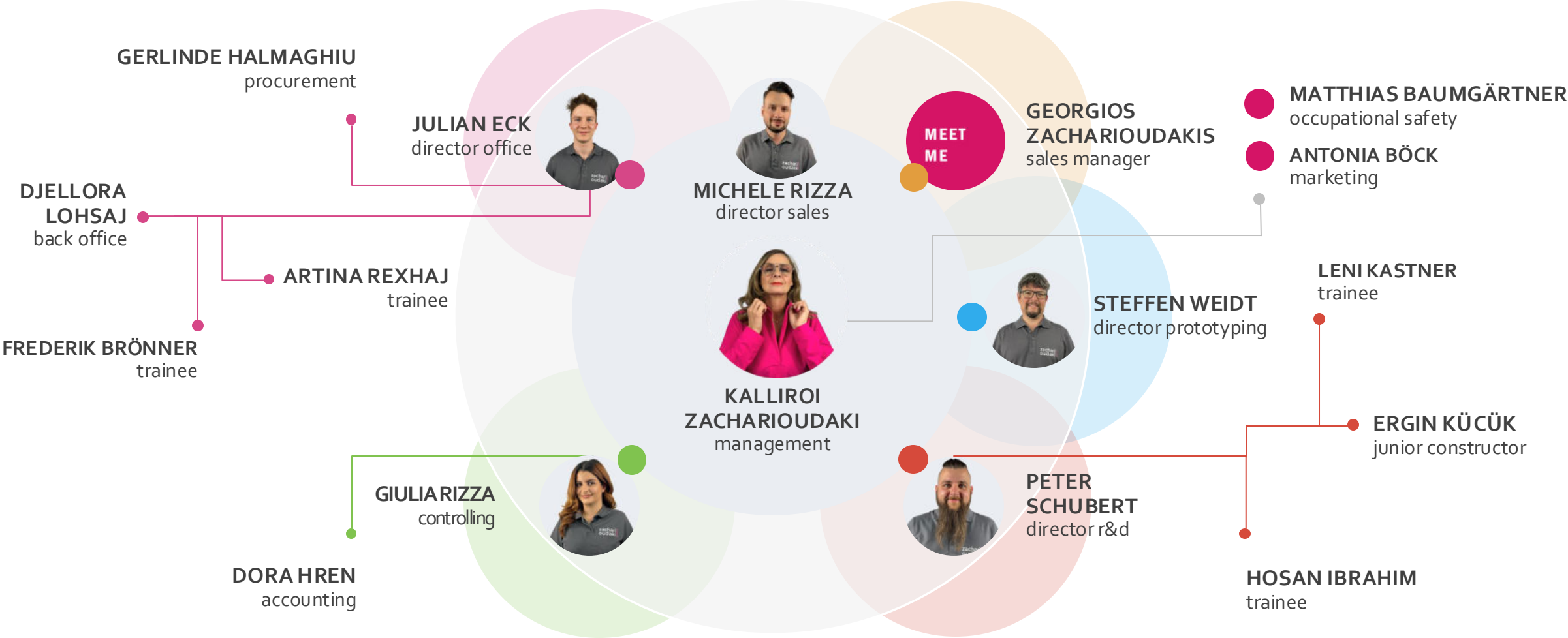






## LOCATIONS

# OUR EXPERTS



# CERTIFICATIONS



## ISO 9001

At Zacharioudaki, quality comes first. Our ISO 9001 certification guarantees first-class products and excellent customer service.



## ISO 14001

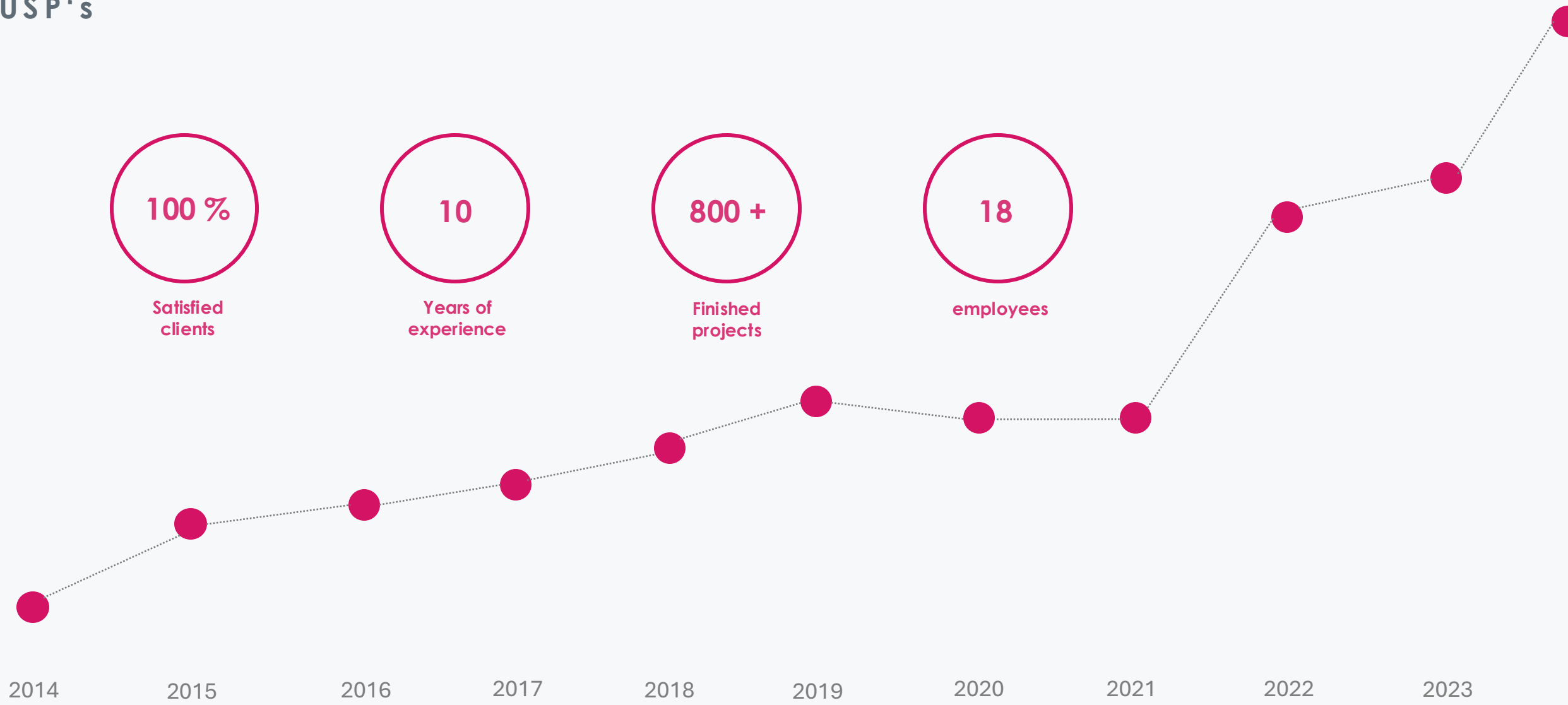
Environmental protection is important to us. With ISO 14001 certification, we are committed to implementing sustainable practices and minimizing our environmental footprint



## TISAX

Recognized security standard for data protection-oriented companies. Protects customer data, strengthens trust and enables secure collaboration.

# USP's





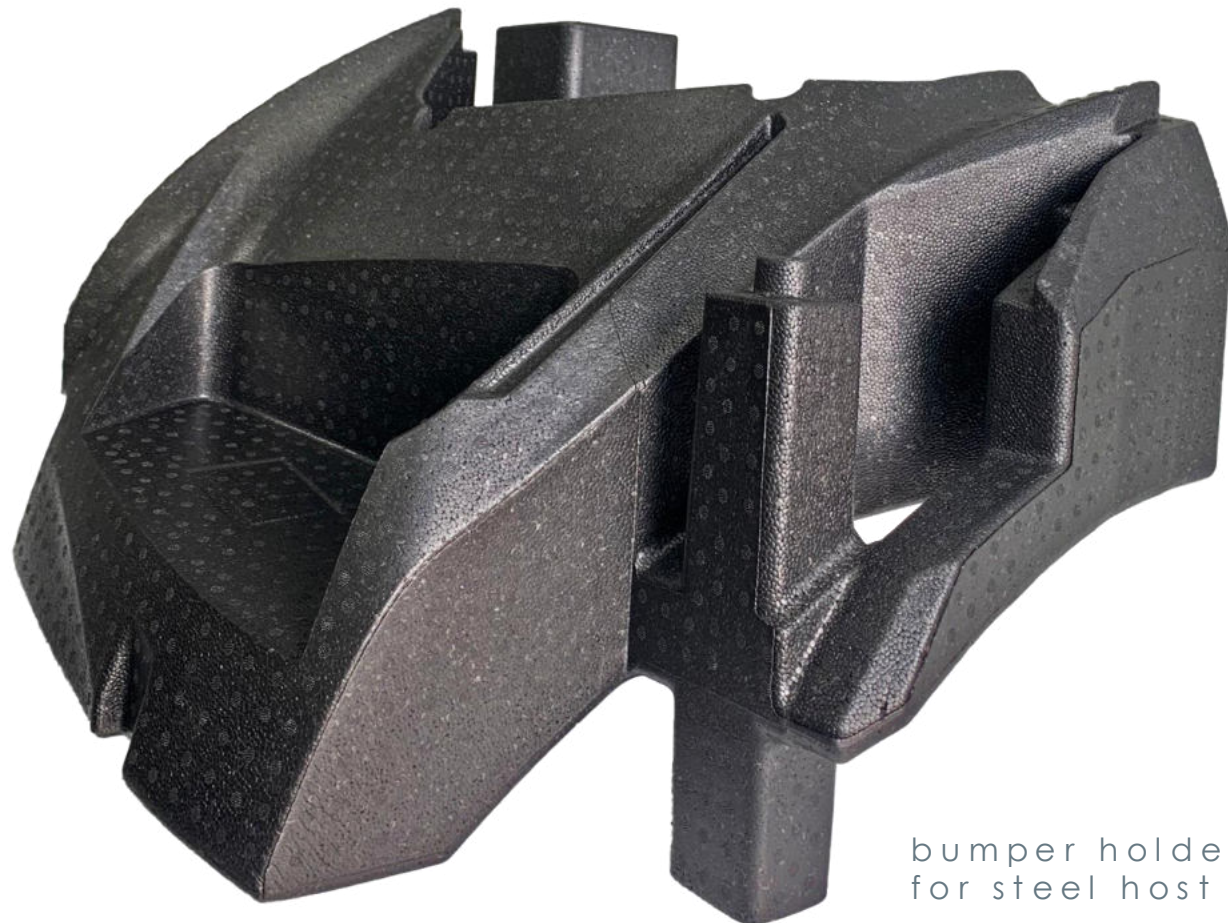


## PACKAGING

As experts in plastic packaging, we can show you in detail which material offers the optimum properties for your requirements. Depending on whether you want to transport food, heavy objects or fragile components, you will find the perfect solution with us. Even if it doesn't yet exist. Thanks to our in-house prototype construction, we are able to develop innovative and sustainable approaches specifically for your company. And if you already have packaging, but it doesn't work 100%? You can contact us in this case too. We will be happy to revise existing concepts until they are a perfect fit for your logistics process.



**You can find more  
information here!**



bumper holder  
for steel host

## EPP

expanded polypropylene

EPP is lightweight, robust and extremely versatile: EPP consists of expanded foam particles, which means that no volatile organic compounds are produced during manufacturing. The excellent recycling options make EPP a flexible and sustainable solution in equal measure. For us, the high impact resistance, easy cleaning and simple realization of a wide variety of shaped elements are particularly important.



You can find more  
information here!



## EPS

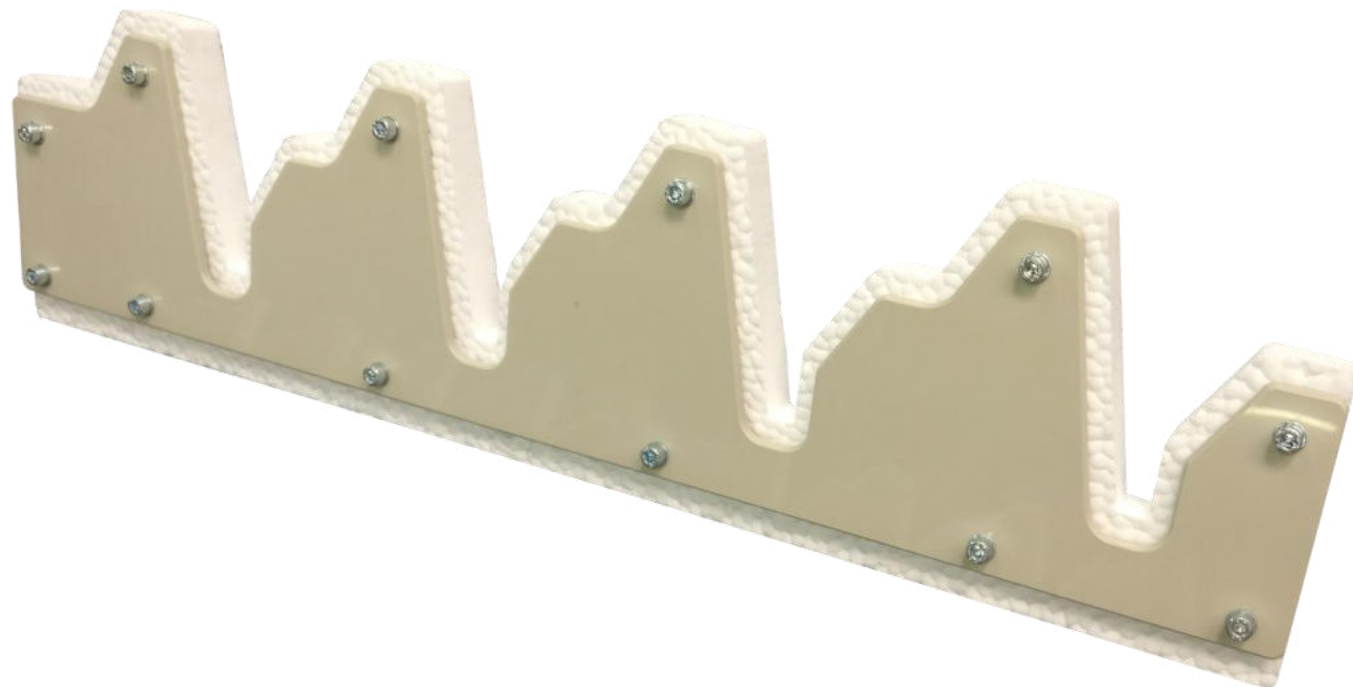
expanded polystyrol

Originally developed by BASF, this rigid foam enjoys great popularity. This is due to its versatility and low weight: only 2% of the material consists of polystyrene, the rest is air. Just like EPP, EPS also has many outstanding properties. These include: great robustness, insensitivity to moisture, 100% recyclability, high impact insulation and easy processing.



You can find more  
information here!





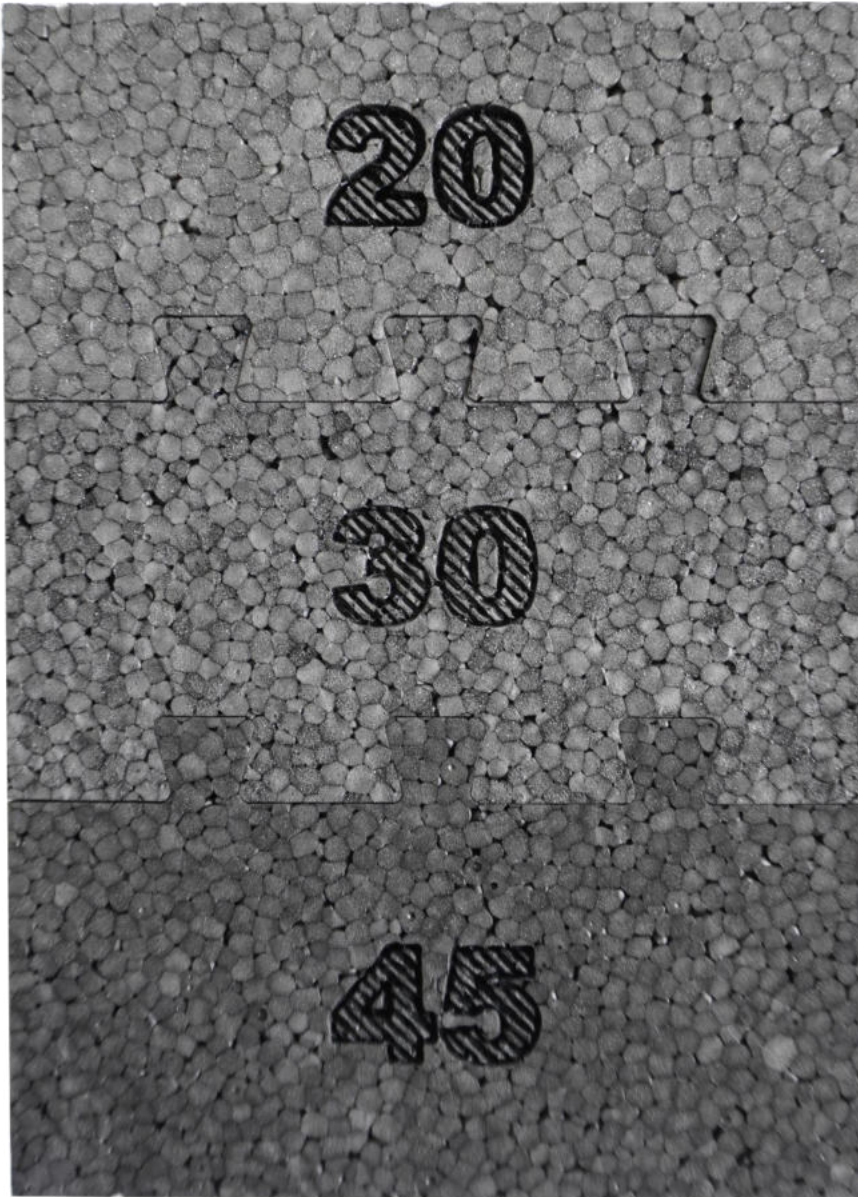
## E-TPU

expanded thermoplastic  
polyurathane

Expanded thermoplastic polyurethane, or E-TPU for short, is used wherever molded parts are exposed to high mechanical loads and still need to be lightweight. Just like EPS and EPP, E-TPU also has a low density. Nevertheless, the material offers excellent resilience, high tensile strength and high abrasion resistance.



You can find more  
information here!



## EPE

expanded polyethylene

Expanded polyethylene, or EPE, is excellent at absorbing shocks and vibrations. This makes this material ideal for solutions involving the transportation of fragile objects. The soft surface also provides optimum protection for sensitive goods. Just like EPS, EPE is also 100% recyclable



You can find more  
information here!



## PE FOAM

polyethylene foam

Polyethylene foams have a closed cell structure. This makes them particularly suitable for sealing, damping and insulating. They are also resistant to many chemicals and solvents. This flexible material is available in many different colors and densities, meaning that the packaging created with it can be highly customized.



You can find more  
information here!





## KLT-INSERTS

We offer you individual inserts made of foam or plastic for your small load carriers. You are free to choose the material, size and shape. Thanks to our extensive knowledge, we can develop the best solution for you.



You can find more  
information here!



## GLT-INSERTS

We can customize our inserts for large load carriers according to your requirements. Whether you need interior linings for pallet cages, divider inserts for shipping vehicle components or inserts made of foam padding - we offer flexible and durable solutions.



You can find more information here!



battery cell holder

## SunForce

Sunforce material is transforming packaging by integrating solar energy capabilities. This innovative material powers smart packaging features such as temperature regulation and real-time tracking, ensuring optimal product preservation and supply chain transparency. Its durability and eco-friendly nature support the industry's move towards sustainable practices, reducing dependence on non-renewable resources.



**You can find more  
information here!**



packaging for  
food industry

## Molded Pulp

Molded pulp packaging, also known as molded fiber packaging, is an eco-friendly packaging solution made by pressing recycled paper or cardboard into molds. This type of packaging is biodegradable, recyclable, and provides excellent protection for items during shipping and handling.



**You can find more  
information here!**

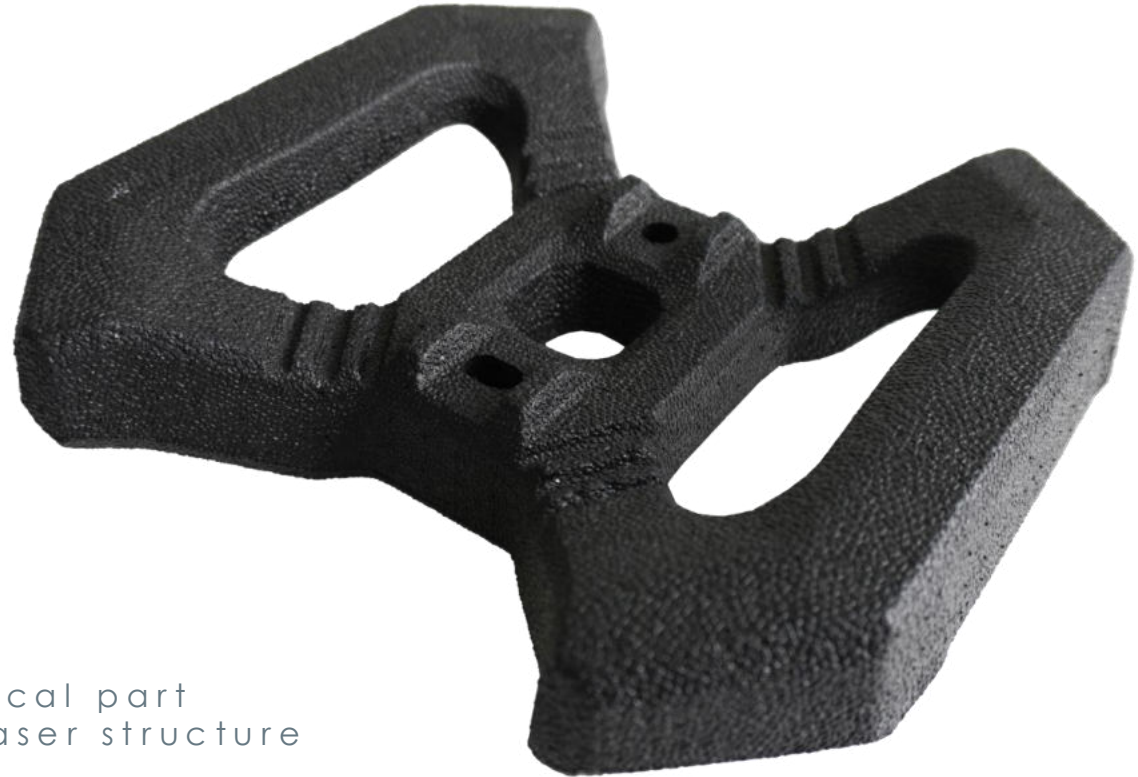


## TECHNICAL COMPONENTS

Molded parts made of EPP and EPS are ultra-light and can be produced in almost any shape. This gives us the opportunity to realize very individual packaging solutions. The possibilities go far beyond small series and individual items: prototypes, pre-series parts and series products can also be produced quickly and economically on our production systems. As EPP also has excellent insulating properties, this material is ideal for transportation where thermal insulation plays an important role.



direct request



technical part  
with laser structure

## 3D PRINTING

3D printing is revolutionizing the packaging industry by offering customized and efficient solutions. This technology enables rapid prototyping, allowing us to quickly create and test new packaging designs. It reduces waste by producing items on demand and supports sustainable practices through the use of eco-friendly materials. Additionally, 3D printing facilitates the production of intricate and innovative packaging shapes that are not possible with traditional methods, enhancing product differentiation and consumer appeal.



direct request







## BLOCK MATERIAL

Do you mill yourself or need block material for your prototype construction? No problem: we have a wide selection of block goods made from standard and special particle foams. We maintain special partnerships with material manufacturers such as Sekisui and Asahi Kasei.



**You can find more  
information here!**



## GASTRO BOX

Keep cold things cold and hot things hot - with our specially designed gastro box. Made from EPP, it combines heat-insulating properties with low weight. Inside, the special compartment layout ensures that bottles can be transported safely and upright. The robust shoulder strap also makes the Gastro Box attractive for delivery services, as it can easily be used to deliver hot food.



**Available now!**



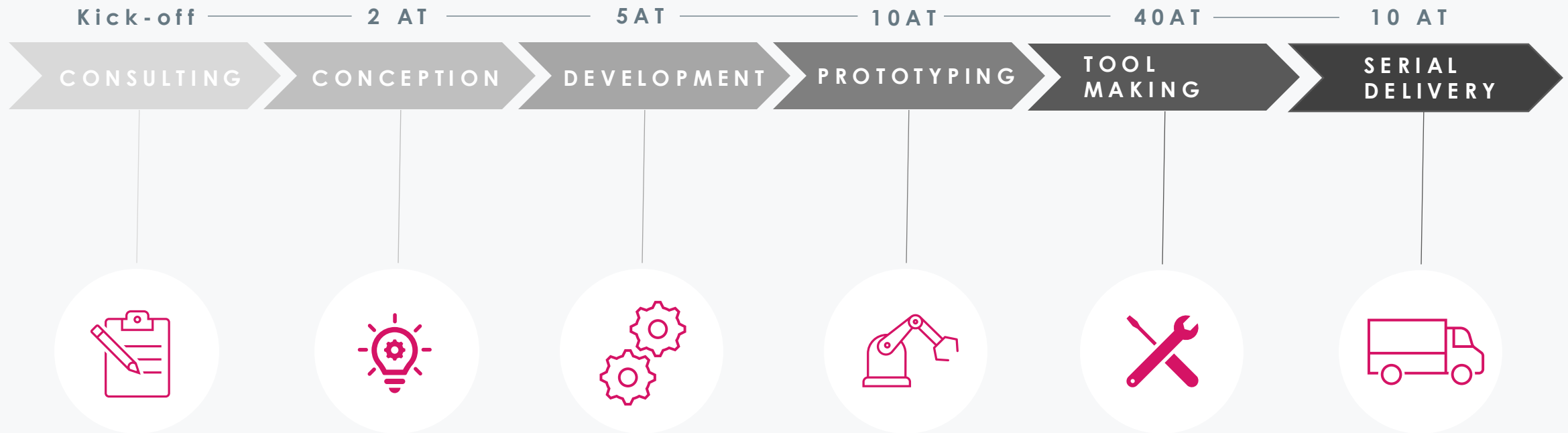
## POST TREATMENT

Not every product has to start from scratch. There are often approaches where existing packaging or a molded part can be optimized. In this case, you have the option of having us test load carriers and molded parts. With special precision milling machines and specially built devices, we can flexibly adapt any part. Color coding or relabeling is also possible. This saves you time and money while protecting the environment.



← direct request

# OUR SERVICE





## CONSULTING

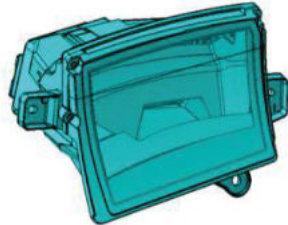
As a reliable partner, we define all objectives first and bring our full expertise to bear right from the start. You benefit both from our in-depth specialist knowledge and from our neutral view of your company. During the process, we focus on maximum efficiency as well as environmental protection, sustainability and weight reduction



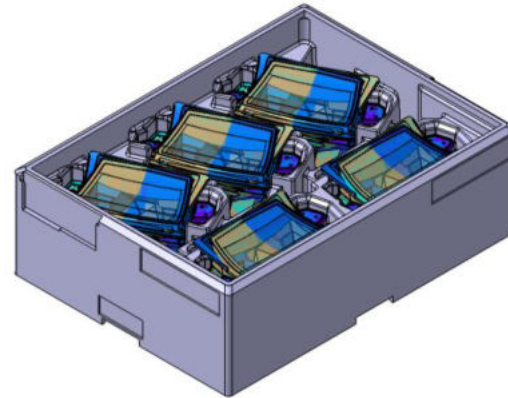
## CONCEPTION



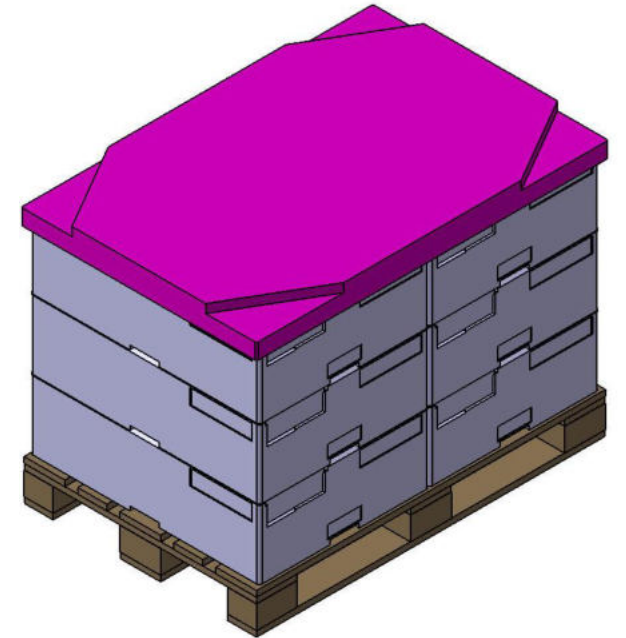
In order to optimize your logistics process, we start with a detailed feasibility assessment. This includes a comprehensive market, competition and process analysis. In this way, we create the optimum foundation for long-term successful logistics. During this process, we see ourselves as a sparring partner with whom you can openly discuss your ideas and wishes.



COMPONENT

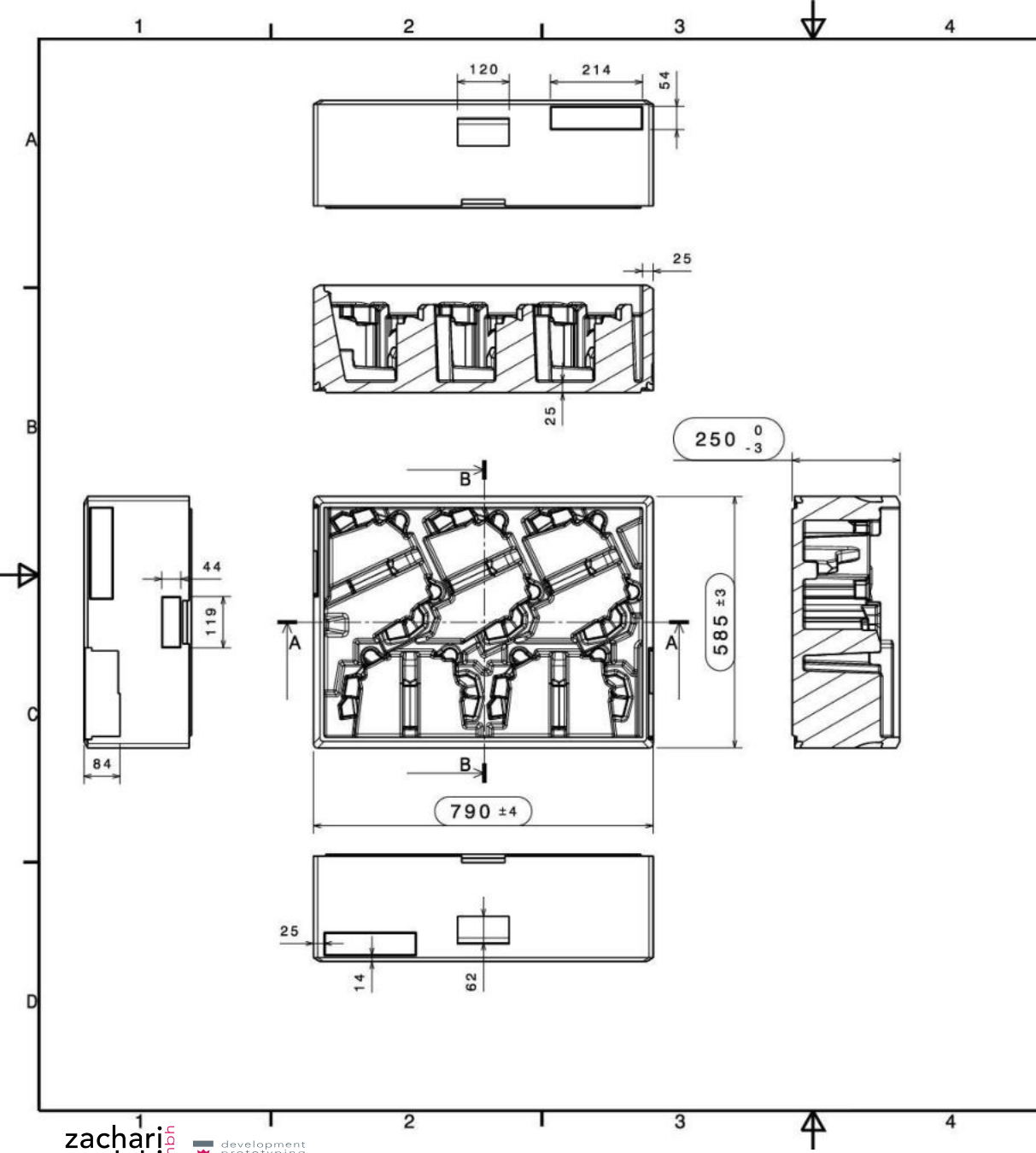


COMPONENT  
WITH CONTAINER

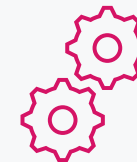


CONTAINER WITH  
LID AND PALLET





## DEVELOPMENT



Creative product design is our specialty. This means that we support you from the design phase through to final acceptance - always taking into account the relevant technical aspects of plastics, of course. The design is always based on the optimization of the following points: Function, production, weight and price.

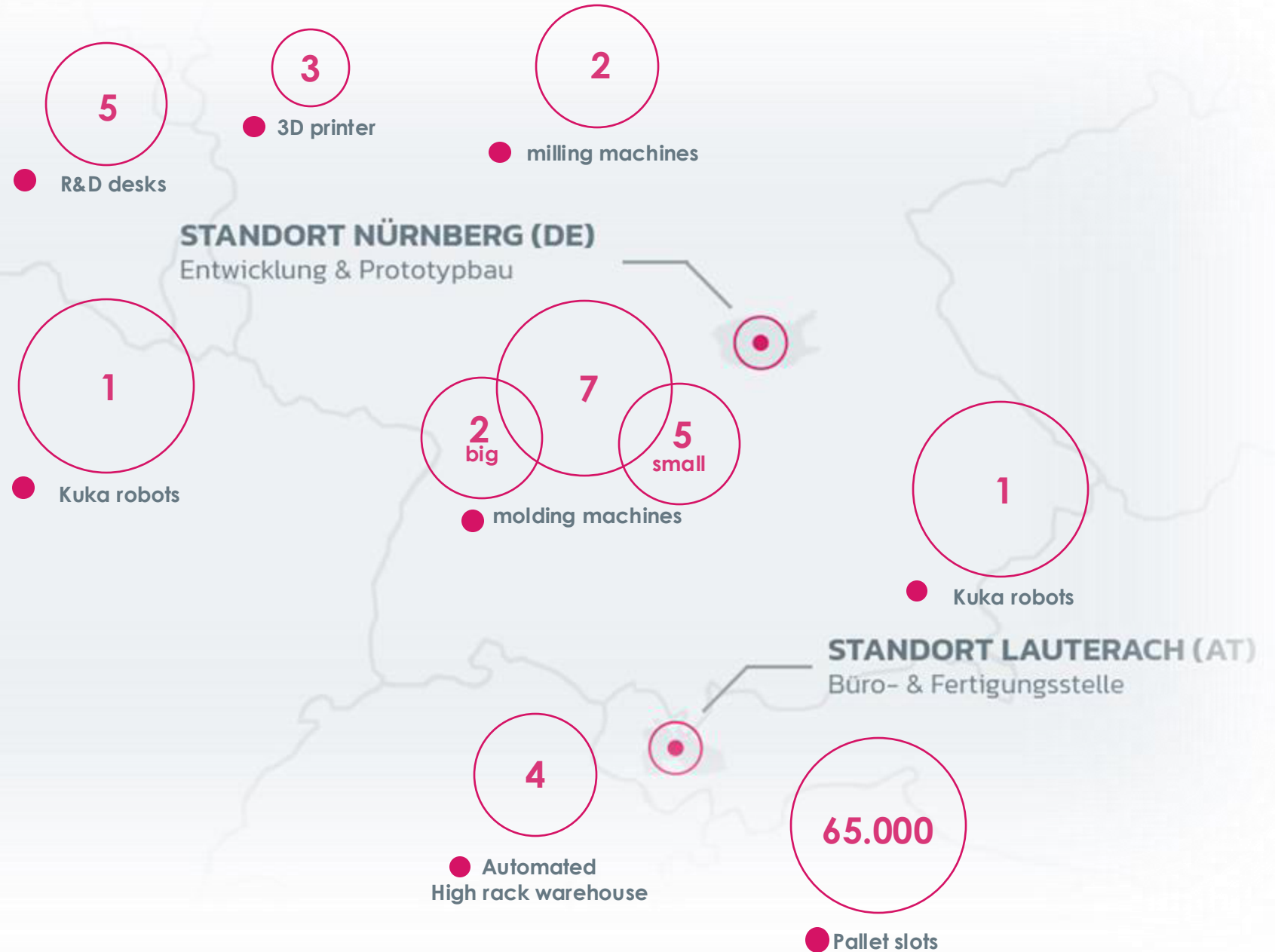
## PROTOTYPING



To check whether your container meets the necessary technical specifications, we produce prototypes of the CAD models by hand. This saves a lot of time, as we can see immediately whether we need to adapt individual components or the entire workpiece to the desired function.



# EQUIPMENT



## TOOL MAKING

Our renowned partners take care of the toolmaking, while we carry out the monitoring and final acceptance. From small to large series, our motto is: there's no such thing as impossible. This is how we realize individual solutions for a diverse customer base.







## SERIAL DELIVERY



With good personnel, a high degree of automation and new machines, we can ensure that series production runs smoothly and economically. To maintain this standard, we regularly invest in training and infrastructure. Because our aim is to always be able to offer you the best possible service.



## SUSTAINABLE LOGISTICS WITH EPP

Products made from expanded polypropylene combine three key advantages: they are robust, lightweight and recyclable. That is why we use EPP recycle up to 30 % for molded parts and load carriers. This saves resources and reduces CO2 emissions at the same time. This material of the future is also shock-absorbent and temperature-regulating. This makes it the ideal packaging material for us.





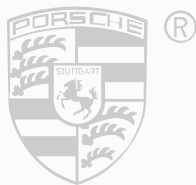
# LOCAL PRODUCTION



**LOCATION NUREMBERG**  
Prototyping & Office



**LOCATION LAUTERACH**  
Production



PORSCHE





MANAGEMENT

**KALLIROI  
ZACHARIOUDAKI**

[Zacharioudaki@zacharioudaki.de](mailto:Zacharioudaki@zacharioudaki.de)



DIRECTOR SALES

**MICHELE  
RIZZA**

[Rizza@zacharioudaki.de](mailto:Rizza@zacharioudaki.de)  
[+49 \(0\)1512 30 36 926](tel:+49(0)15123036926)



**MEET  
ME**  
SALES

**GEORGIOS  
ZACHARIOUDAKIS**

[G.Zacharioudakis@zacharioudaki.de](mailto:G.Zacharioudakis@zacharioudaki.de)  
[+49 \(0\)163 57 33 395](tel:+49(0)1635733395)



DIRECTOR R&D

**PETER  
SCHUBERT**

[Schubert@zacharioudaki.de](mailto:Schubert@zacharioudaki.de)  
[+49 \(0\)911 - 965 736 80](tel:+49(0)911-96573680)



**JULIAN ECK**

[eck@zacharioudaki.de](mailto:eck@zacharioudaki.de)  
[+49 \(0\)911 - 965 736 80](tel:+49(0)911-96573680)



DIRECTOR OFFICE



**GIULIA RIZZA**

[G.Rizza@zacharioudaki.de](mailto:G.Rizza@zacharioudaki.de)  
[+49 \(0\)911 - 965 736 80](tel:+49(0)911-96573680)



CONTROLLING



**STEFFEN WEIDT**

[Weidt@zacharioudaki.de](mailto:Weidt@zacharioudaki.de)  
[+49 \(0\)911 - 965 736 80](tel:+49(0)911-96573680)



DIRECTOR  
PROTOTYPING

**YOUR CONTACT  
PERSONS**

## CONTACT US

Just get in touch. You are welcome to contact us directly by phone or - if you prefer - by e-mail. We will get back to you within 12 hours.

Neuburger Straße 31  
90451 Nürnberg

[info@zacharioudaki.de](mailto:info@zacharioudaki.de)  
+49 (0)911 – 965 736 80