

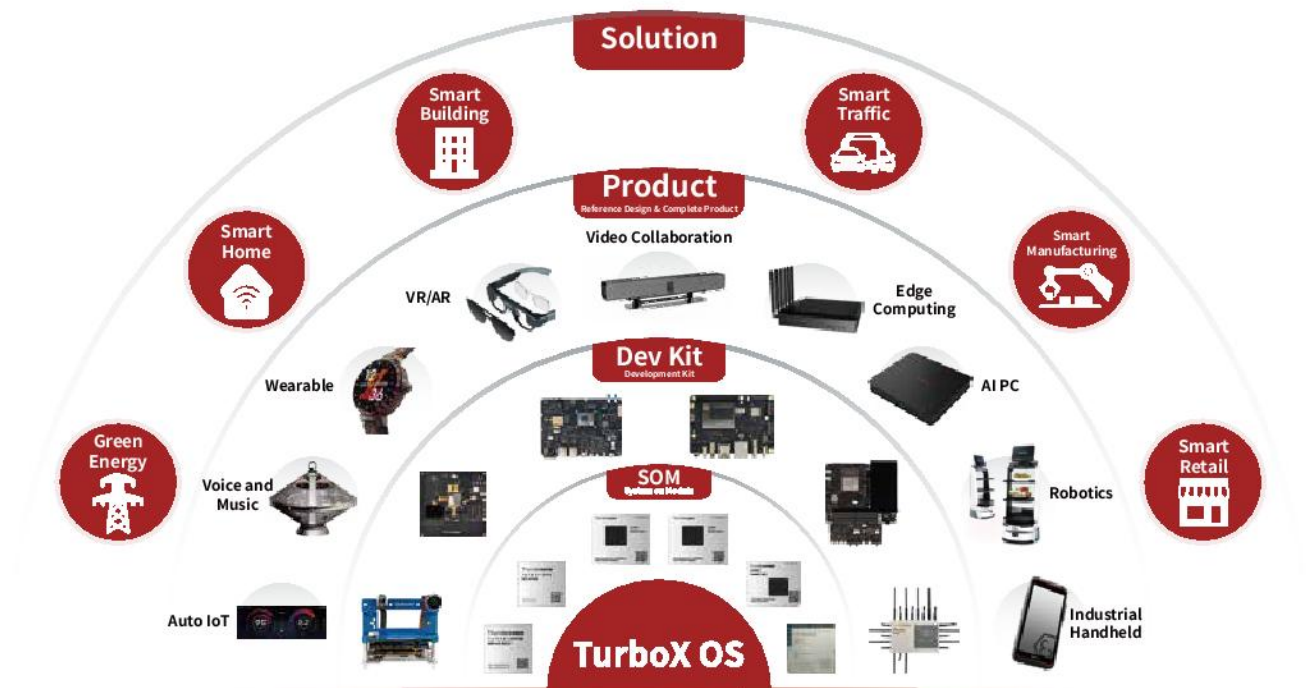
Smart Devices Solutions

SOM • Dev Kit • Reference Design • Complete Product
Software Development • Cloud Service • On-device AI



Thundercomm

Thundercomm is a one-stop IoT solution provider for next-generation devices. Founded in 2016, Thundercomm is headquartered in San Diego and a joint venture with Qualcomm.



One-stop IoT Solution Provider

Leveraging Qualcomm's world-leading SoC technology and our proven expertise in operating systems, Thundercomm is now focused on combining emerging, disruptive technologies, like AI, 5G, IoT and cloud computing to provide comprehensive end-to-end solutions from smart modules, development kits, reference designs to complete product for OEMs/ODMs, enterprises and developers.

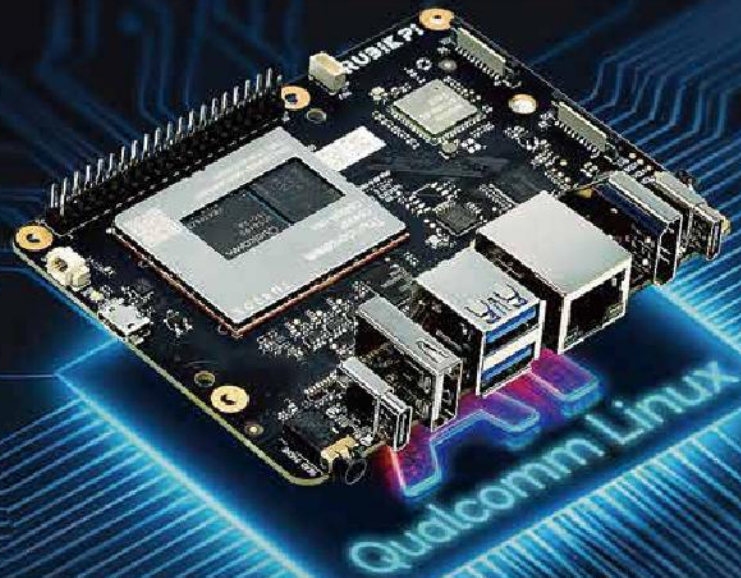
Customer Value



Based on optimized operating systems, embedded with mature AI algorithms and FOTA, Thundercomm empowers smart cameras, video conference devices, robotics, AR/VR glasses, wearables and industrial handhelds with small RAM, fastboot and low power features to lower the smart product development cost and speed up the product development process from prototype to mass production.

RUBIK Pi

RUBIK Pi 3, powered by Qualcomm® QCS6490, offers advanced on-device AI capabilities with various accessories. Ideal for Gen AI, small language models, whisper, computer vision and more, RUBIK Pi 3 is a compact, powerful platform that elevates your innovations with Qualcomm's cutting-edge technology.



RUBIK Pi 3 Advantage



Qualcomm® Linux®

First open-source Linux based on Qualcomm® QCS6490 platform for developers



Compatibility

Compatible with Raspberry Pi 5 official accessories



Compact Design

With a portable size of 100mm x 75mm, enabling easy direct application in products



AI Capability

12.5 TOPS on-device AI capability



Easy to Expand

- C5430P/C6490P/C8550 SOMs are P2P compatible
- Easy to build customized EVK



Open-source Community

A vibrant and collaborative group of enthusiasts, developers, and educators



Multiple OS support

Qualcomm open-source Linux, Android, Ubuntu on Qualcomm IoT Platform



Comprehensive Documentation

Accessible documentation, including official guides, tutorials, datasheets, and FAQs

World Leading XR Solution Provider

- Optimized XR OS for better performance and lower power consumption
- Ultra high-resolution display with low rendering latency
- 6DoF head/controller and hand tracking for a more immersive experience

VR

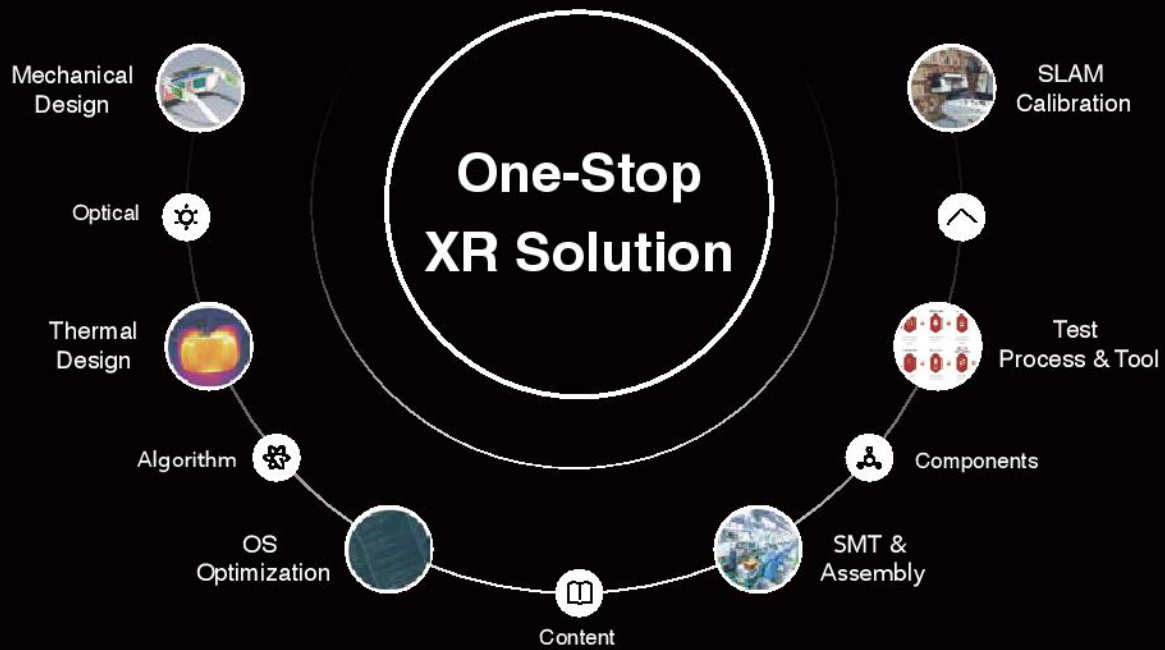


AR



MR





Hardware Platform



MR HMD Pro



XR2 Gen2

MR HMD Pro

SoC	Qualcomm SXR2250P
Memory/Storage	16GB LPDDR5x, 512GB UFS3.1
Optical	Pancake with 90° FoV
Resolution	2 x 4K Display 3552*3840
6DoF	4*6DoF Camera
See Through	2*RGB Camera
Eye Tracking	Support
Hand Tracking	2*Hand Tracking Camera
Time of Flight	1*dToF Camera
IMU	Accelerometer, gyroscope, magnetometer
Key Feature	6DoF Head Tracking/Video See Through/Wireless Split Rendering/Hand Tracking/Eye Tracking



Smart Glasses



AR1

Smart Glasses

SoC	Qualcomm SAR1130P
Memory/Storage	4GB LPDDR4X, 32GB eMMC 5.1
RGB Camera	3024*4032, 1080P@30fps
BT/Wi-Fi	Wi-Fi 7, Bluetooth 5.3
Audio	5x digital microphone and stereo speaker
Resolution	640*480 Micro LED (Optional)
IMU	Accelerometer, gyroscope
Key Feature	Photo/Video/Music/Call/Voice CMD/Noise Cancellation/Voice Wake-up/AI Assistant





Video Collaboration Business

All-in-One Video Conference Device One-stop Solution Provider



All-in-One Teams room device



360° panoramic camera



Bring your own device video bar



Touch console



Smart display



Product design

From industrial design to device architecture, UI/UE and DFX



Hardware base

SOM, PCBA and mechanical custom



Software OS base

Android, Linux, customization and restructure



Image/Audio

Camera system and audio system design



UC platform

API integration and complete test & certification process



Intelligence

Neural network AI algorithm
LLM on device



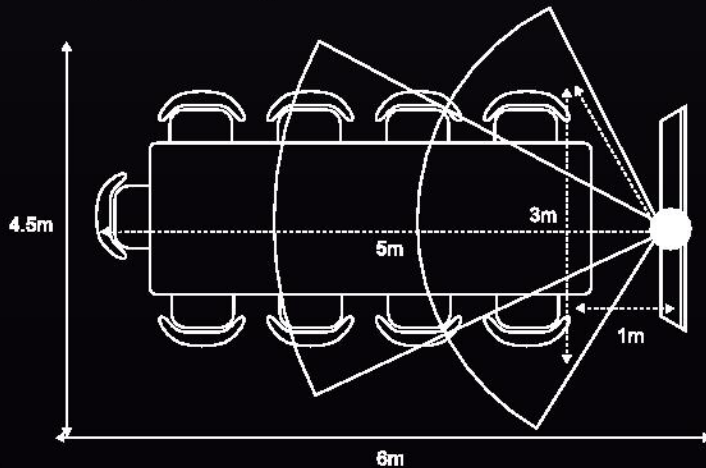
Cloud

FOTA, device management
Public/private cloud deployment

Key Technology

Camera system

- Multiple camera coordination
- ISP pipeline customization
- E-PTZ engine
- Camera fine tuning
- Intelligent people framing



Audio 3A system

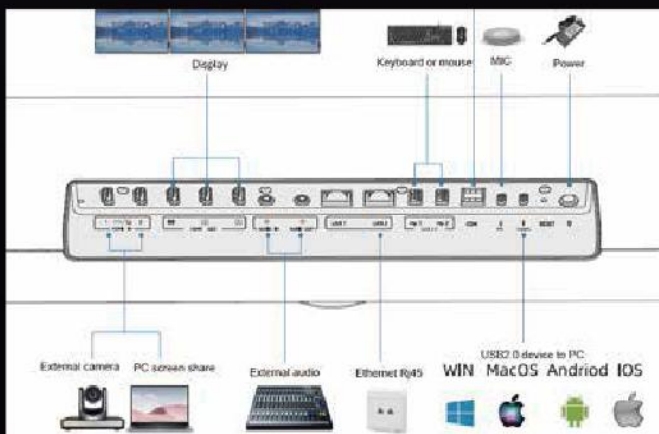
- 14 MIC array for medium/large room
- 8 MIC array for small/medium room
- 4 MIC array for huddle room
- De-reverberation
- AI denoise



Key Design

Interface system

- Multiple HDMI out 4K60
- HDMI in 4K30
- DP in 4K30
- Audio extension
- Multiple-purpose USB-C
- GB Ethernet



Design for Microsoft Teams Room Android and Zoom

- Customized API for UC app
- Video/Audio in-out performance
- Robust system stability with 7*24 continuous operation
- Compatible with BYOD (Bring Your Own Device)
- Practical UE test
- 2D direction of arrival detection



One-stop Handheld Solution Provider



Industrial PDA



POS



Enterprise Tablet



Gaming Console

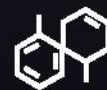
Industrial
Handheld



5G + Wi-Fi 6E



Waterproof & Explosion-proof



ATEX

POS



PCI 6.x, EMV L1/L2



NFC EMVCo Certification



Printer Support

Enterprise
Tablet



IP68 Resistant



Long Battery Life



Multi-task

Distinctive Functions

Secure Payment

- Security and anti-tamper technology to erase data in the event of unauthorized attacks.
- Support barcode reader.
- Meet the latest PCI requirements, security standard PCI 6.x, EMV L1/L2. Mastercard PayPass, Visa PayWave, American Express, JCB/Speedy, Diners/Discover D-PAS, Union Pay, FeliCa M Class, J-debit, etc.

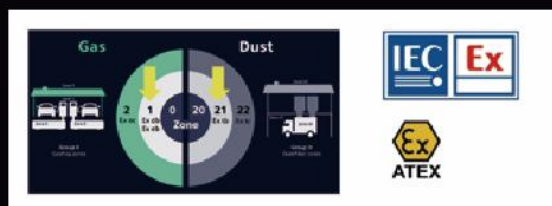


Waterproof Design (IP68)

- The devices are IP tested and certified, making them dust and water resistant.

Explosion-proof Design

- Meet the requirements: Gas Zone 1 & Dust Zone 21
 - Ex ib IIC T4 Gb
- Certified by ATEX/IECEx Zone 1/21 NEC500 Class 1 Div 1 EAC/INMETRO/KCs /PCEC



Software Customization Offering

Applications

Middleware

Handheld/POS

Bar Code

Face ID

Anti Tamper

Payment

Game Console

Joystick Solution

Wi-Fi 7 / 5G

Performance Strategy

Gamekey Remap

Intelligence

Object Detection

People Counting

Patch Track

Face Recognition

Android OS

FW/BSP customization

Fast Boot

Dual Battery

Hardware Platform



C2290 SOM



C6115 SOM



C6490P SOM



C6690 SOM



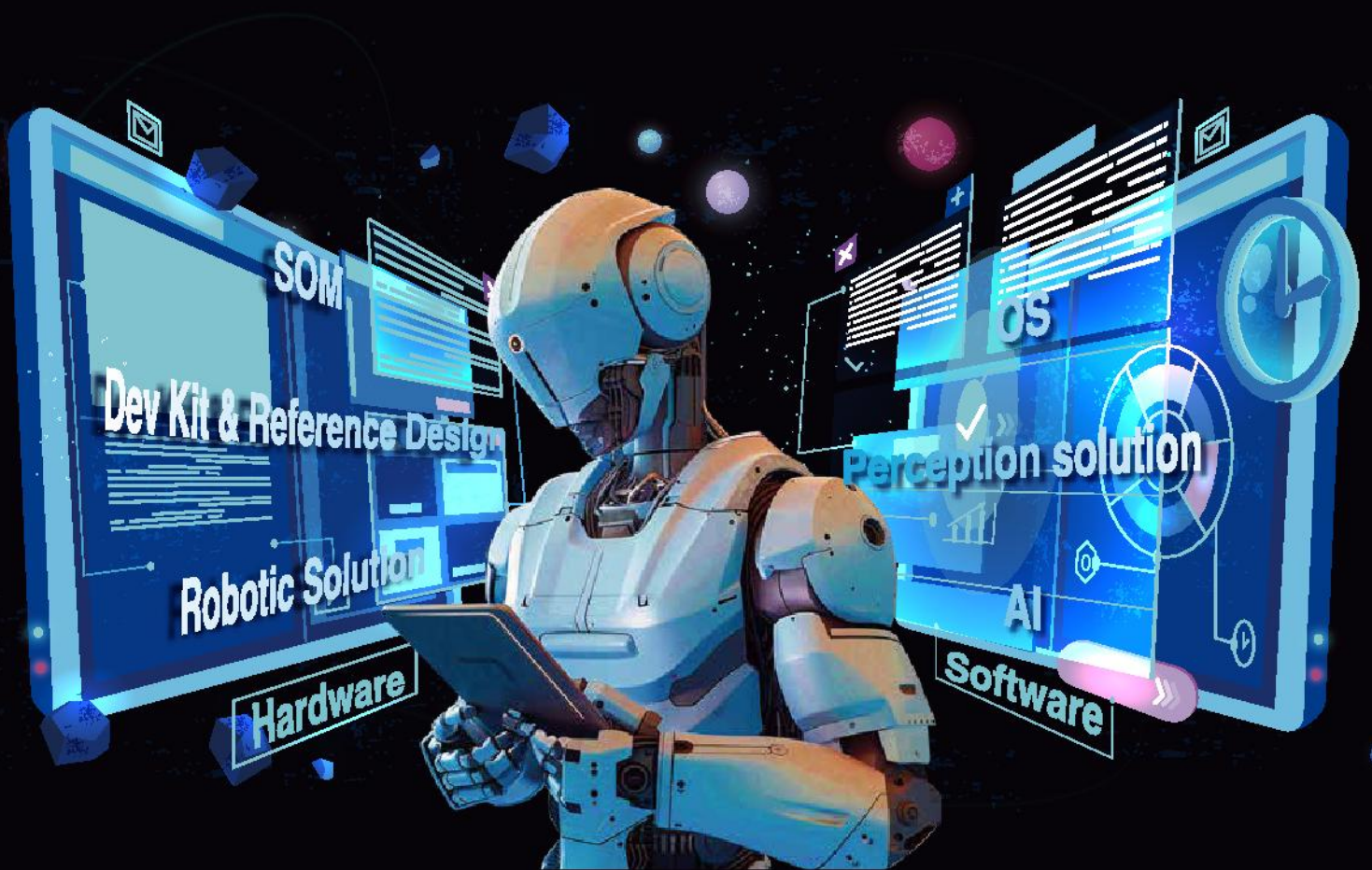
C8550 SOM

Contacts:

E-mail: sales@thundercomm.com



One-stop Robotics Solution Provider



Drone



Service Robot



AMR



Companion Robot



Humanoid Robot

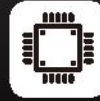


Robotics Service



Consultant and Design Service

Innovative category prototype design. Support a variety of robots from home to sky.



Hardware Base

SOM, PCBA and structural customization.



Algorithm Optimization

Support SLAM, ML, CV, LLM, NAV algorithm customization.



Cloud and APP Design

FOTA, facility management, location management.



OS&APP

Android, Linux, ROS customization, fast startup, small memory optimization.



Encryption and Security

Safe read and write area design, image information desensitization processing.

Key Technology

Intelligent Perception Solution

- Camera pipeline customization & camera tuning
- 8-camera concurrent processing
- Multi-sensor fusion filtering
- High frame rate object detection and segmentation

Intelligent Interaction Solution

- ID design
- Voice localization
- Motion planning
- Local LLM optimization

User Scenario

Different types of robots are being integrated into our daily life. Thundercomm is helping people build all kinds of robots.



Drone



Public Safety
Robot



Logistics
Robot



Professional
Cleaner



Lawn Mower



Controller



Home Robot



Robotic Smart
Assistant

Contacts:

E-mail: sales@thundercomm.com



AI PC Full-Stack Solution Provider

- Over 10 years of close collaboration with Qualcomm and Microsoft
- Pioneer in developing WoS (Windows on Snapdragon) capabilities with extensive design and manufacturing experience
- Full-stack Windows system development team and capabilities



Mini PC



Desktop Computer



Notebook



Industrial Tablet

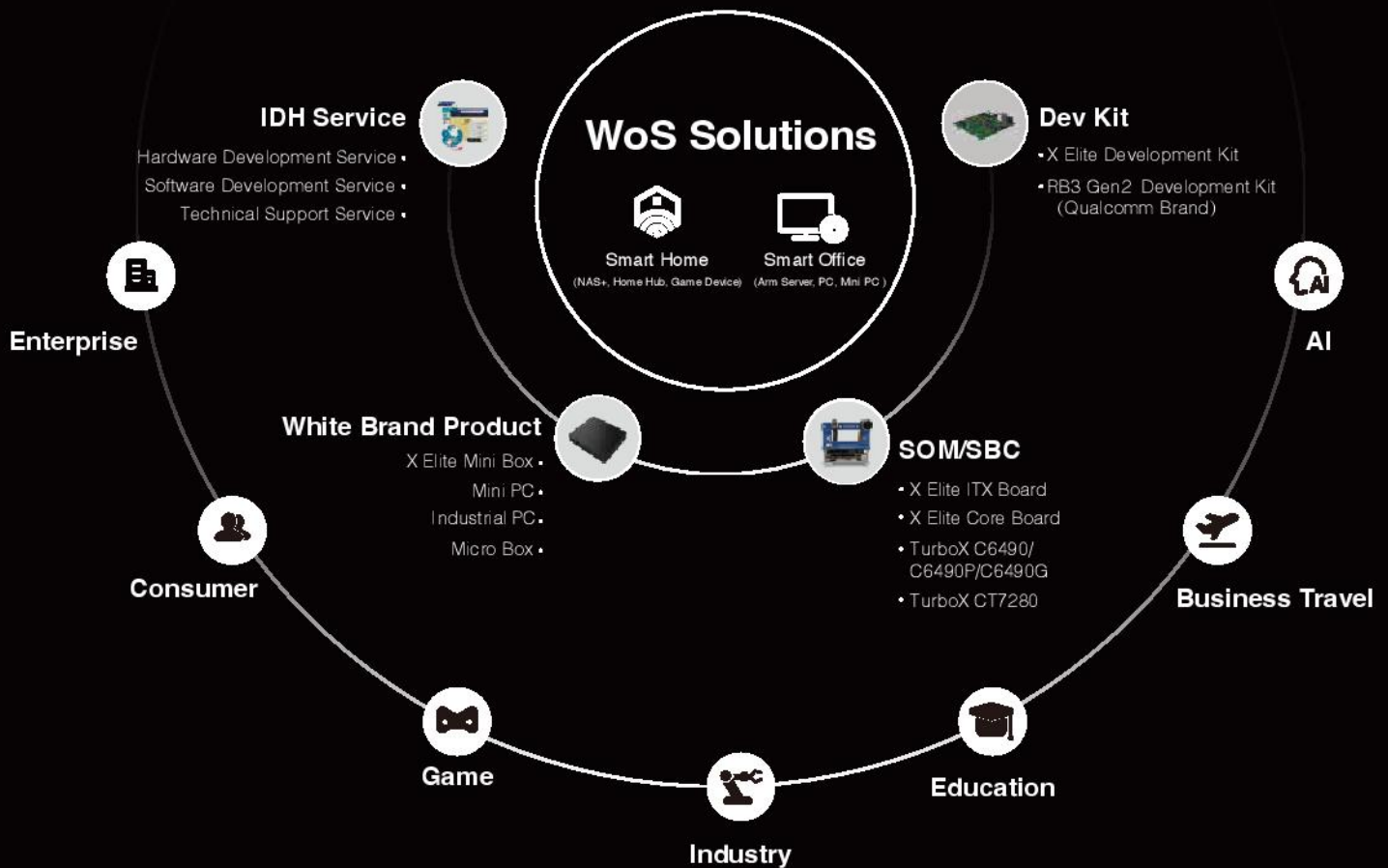


All-in-One Computer



Other Windows Devices





AI Mini PC G1 Elite



- Latest Qualcomm Snapdragon X Elite 12-core SoC, built for AI with up to 45 TOPS
- Rich interfaces including 3x USB4 Type-C, 1x USB Type-A, SD card, Wi-Fi 7/BT 5.4
- Windows 11 Home and Linux support

AI Mini PC G1 IoT



- Based on Qualcomm QCS6490 processor, built for AI with up to 12 TOPS
- Low power consumption, fan and fanless design, completely silent
- Windows 11 IoT and extended product support through 2036

AI Mini PC G1



- Based on Snapdragon X Plus SoC, built for AI with up to 45 TOPS
- Rich interfaces: USB4 Type-C, USB Type-A, HDMI, Wi-Fi 7/Bluetooth 5.4 for functional expansion
- Windows 11 Home support



RUBIK Avatar AI Interactive Digital Human On-device Computing Suite

RUBIK Avatar AI interactive digital human on-device computing suite is developed based on Thundercomm's on-device AI and RUBIK Avatar digital humans technology. It is designed for software and hardware equipment integrators to create products with AI digital human interaction functions and provides the ability to quickly integrate AI interactive digital humans.



Component



AI box

A lightweight and high-computing power AI Box that realizes the real-time interaction with the digital human on the on-device and intelligent functions.



Multi-modal perception module

Includes cameras and microphone arrays to achieve precise recognition of user voices in noisy environments.



Interactive digital human SDK

Provides developers with convenient development interfaces to quickly and easily integrate digital human interaction functions.

Product Value

Help integrators reduce development costs and time, enabling them to quickly integrate AI interactive digital humans and intelligent capabilities into products, enhance product competitiveness, and meet new intelligent interaction requirements.

Application



Medical Industry

Intelligent medical guidance



Enterprise Service Industry

Intelligent brand promotion



Retail and Catering Industry

Intelligent food ordering

Technology

- Thundercomm's on-device AI construction
- Cartoon digital human creation and rendering
- Real-person digital human replication and rendering
- Smooth interaction experience construction
- On-device and edge-side computing hardware development
- On-device intelligent voice construction

Advantage

- One-stop solution for rapid integration of AI interactive digital human capabilities, reducing the development time and costs for integrators.
- Local real-time rendering of digital humans, with perfect synchronization of lip movements and speech, reducing dependence on network bandwidth.
- Multimodal recognition and perception capabilities in complex environments, ensuring a smooth human-computer interaction experience.
- A lightweight and high-computing power AI box that can be flexibly integrated into scenarios and supports various interactive terminal devices.

Contacts:

E-mail: sales@thundercomm.com



Accelerate Digital Transformation with Edge AI

Edge AI Box



EB2
Edge AI Station

Powered by Qualcomm
QCS610 SoC



EB5
Edge AI Station

Powered by Qualcomm
QCS8250/QRB5165 SoC



EB3G2
Edge AI Station

Powered by Qualcomm
QCS6490 SoC



EB5G2
Edge AI Station

Powered by Qualcomm
QCS8550 SoC

- Wide range of computing power selections
- Powerful codec capabilities for multi-channel decoding
- Rich interfaces designed to meet customized requirement
- Fanless structure design supports working in a wide temperature range
- On-shelf product with high reliability, passed multiple product tests and certifications
- 100+ commercially ready algorithms for various applications
- Integrated IoT harbor cloud based device management platform
- Embedded EdgeOS for application management
- With experience in implementing various solutions, and provision of customized services.

Software

EdgeOS Edge Management Platform

- Support system OTA upgrade, AI analysis config with WebUI
- Support ONVIF/RTSP protocol IPC or NVR access
- Support service scheduling, orchestration and scaling containers
- Support IoT Harbor/AWS IoT Greengrass/Azure IoT cloud services

IoT Harbor Cloud Management Platform

- Support device, application and algorithm upgrade and management
- Support major IoT and video protocols with fast cloud connection
- Support AI analysis task management and alarm management
- Support RESTful API and public cloud

Algorithm



Phone Call Detection



Smoking Detection



Mask Detection



Face Recognition



Smoke and Flame Detection



Off-duty and Sleep Detection



Safety Helmet Detection



Unauthorized Leave Detection



Fall Detection



Intrusion Detection



People Counting



Passenger Flow Statistics

Application



Smart Retail



Smart Building



Smart Manufacturing



Smart Traffic



Digital Avatar



Smart City

Contacts:

E-mail: sales@thundercomm.com



San Diego, USA

5405 Morehouse Drive Suite 210 □ San Diego CA 92121

☎ +1-858-352-6181

✉ sales@thundercomm.com

Ulm, Germany

Magirus-Deutz-Str. 13 89077 Ulm

✉ sales@thundercomm.com

Tokyo, Japan

9F Osaki wiz tower Building, 2-11-1 Osaki, Shinagawa-Ku,
Tokyo, Japan, 141-0032

✉ sales@thundercomm.com

Seoul, Korea

#401, 4fl, Uspace 2-B, 670, Daewangpangyo-ro, Bundang-gu,
Seongnam-si, Gyeonggi-do, 13494 Korea

✉ sales@thundercomm.com

Beijing, China

ThunderSoft Building, Building 3, No.9 Qinghua Dong Road,
Haidian District, Beijing, China, 100083

☎ +86-400-006-1696

✉ sales@thundercomm.com

Get the Latest News from Thundercomm



Website



LinkedIn

