

The RUCK logo is displayed in a bold, black, sans-serif font within a yellow rectangular box in the top right corner of the image.

ruck



PRODUCT OVERVIEW



TABLE OF CONTENTS

Welcome to ruck Ventilatoren GmbH	3
CPA and CPC: The new ruck JetFans	4
Axial fans / Tube fans	5
Tube fans / Duct fans	6
Roof fans / Extract fans	7
Compact AHU with heat recovery	9
Supply and extract air units	11
ruck app and control unit	11

WELCOME TO RUCK VENTILATOREN GMBH

We are a family owned company specialized in the production of high quality solutions for the climatization and ventilation sector. Our aim is to offer highly efficient and cost-effective products. In addition, we manufacture numerous customised products that are specially developed to meet customer requirements.

We offer most of our product series with different motor variants so that you can choose the optimum combination for your application - highly efficient EC motors, voltage-controlled or stepped AC motors as well as frequency-controlled three-phase AC motors.

All our products comply with the relevant EcoDesign directives 327/2011 (LOT11) and 1253/2014 (LOT6).

Two production sites with a high level of vertical integration and a large component warehouse offer maximum flexibility and delivery reliability.

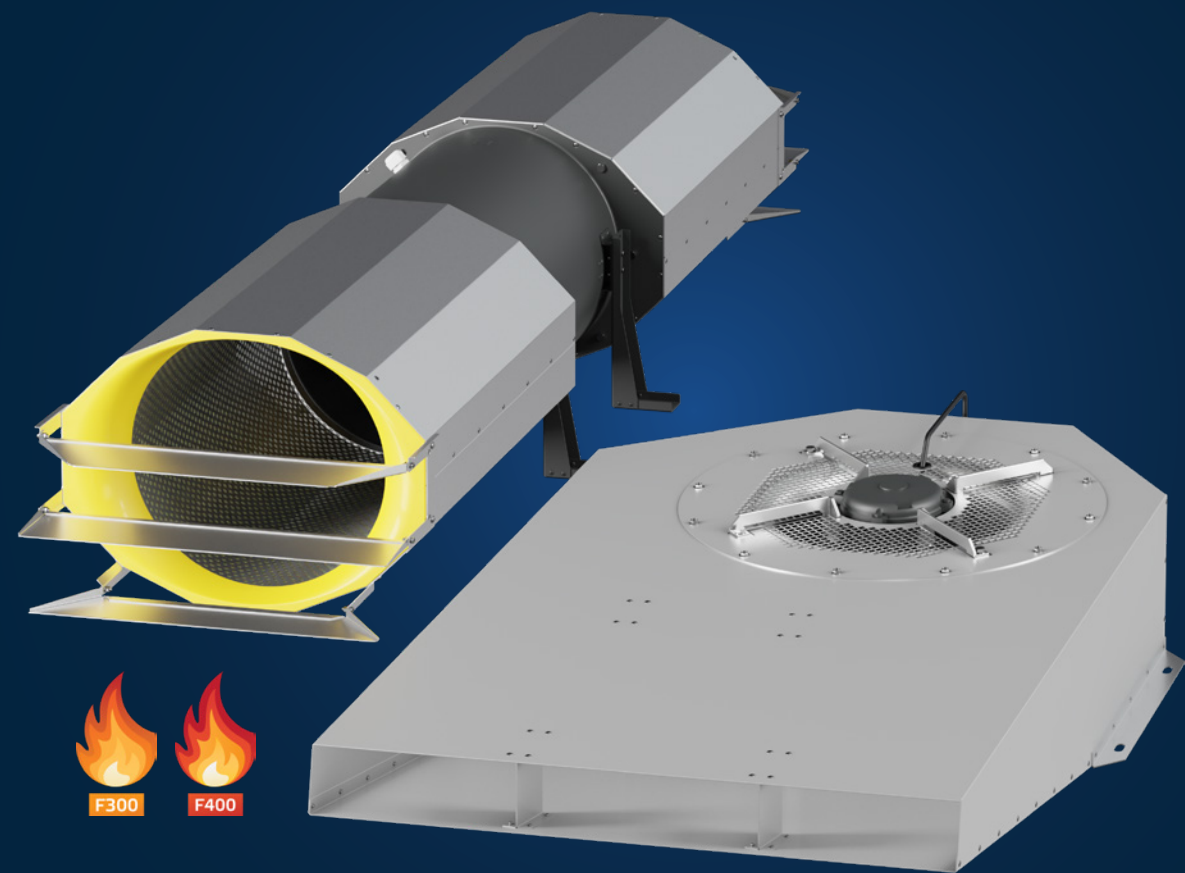
On the following pages we would like to present an extract from our standard programme.

If you have any special requests or questions, please do not hesitate to contact us.

We look forward to receive your request!

ruck Ventilatoren GmbH

CPA AND CPC: THE NEW RUCK JETFANS



ruck JetFans are our innovative solution for the efficient and cost-effective ventilation of parking garages. In normal operation, they reduce the concentration of pollutants and ensure smoke-free escape routes in the event of a fire or smoke dilution for improved visibility, including for firefighter intervention.

CPA

Car Park Axial sets the standard in unidirectional and reversible operation. It has a patented inlet nozzle that increases thrust by a further 6%.

- Thrust in the main direction up to 87 N, in reverse mode up to 74 N
- 2 poles & 2/4 poles motors
- Smoke extract version in classes F300 and F400
- Sizes: Ø 315, Ø 355, Ø 400
- Conveying medium temperatures up to 60 °C

CPC

Car Park Centrifugal is the even flatter alternative to the CPA and has very high thrust values.

- Thrust values above 80 N
- CFD-optimized aerodynamics
- Impeller adapted to the application
- Smoke extract version in classes F300 and F400
- Sizes: Ø 500 und Ø 560
- Conveying medium temperatures up to 60 °C
- Additional Ø 250 with EC technology

AXIAL FANS / TUBE FANS



AXIALINE | 140.000 m³/h

- AL 315 - AL 1250
- Axial medium pressure fan with highest efficiencies
- Available with different blade angles
- Available in versions F400, F300, 60 °C continuous operation
- Aerodynamically optimized 3D impeller and 3D stator blades
- Cone hub for optimal incident flow at the impeller
- Robust, yet lightweight welded construction
- Powder coated steel housing
- Motors:
 - High-efficiency EC motors (...EC)
 - IEC three-phase motors IE3 (...D)



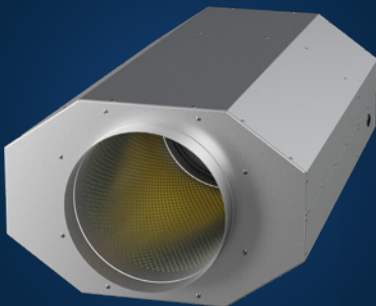
ETAMASTER | 5.700 m³/h

- EM 100 - EM 400
- Diagonal fan with highest aerodynamic efficiency
- CFD optimized 3D impeller and 3D stator blades
- Motor in hub area, does not disturb the airflow
- Casing made out of corrosion resistant plastic
- Motors:
 - High-efficiency EC motors (...EC)
 - Three-steps AC motors (...M)
 - Robust AC motors (...E)



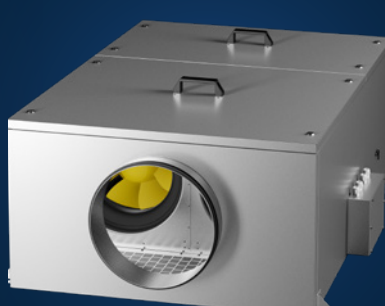
ETALINE | 23.100 m³/h

- EL 125 - EL 710
- High efficiency diagonal fan
- CFD optimized 3D impeller and 3D stator blades
- Housing (depending on size): Plastic, galvanised sheet steel, aluminium
- Motors:
 - High-efficiency EC motors (...EC)
 - Three-phase AC motors (...D)
 - Three-steps AC motors (...M)
 - Voltage controllable AC motors (...E)



EMI | 5.700 m³/h

- EMI 150 - EMI 400
- Built-in ETAMASTER diagonal fans, with highest aerodynamic efficiency
- Optimized sound insulation due to integrated inlet-side silencer
- Sound insulation with mineral wool
- Compact design, optimized for installation in false ceilings
- Housing made of galvanized sheet steel
- Motors:
 - High-efficiency EC motors (...EC)
 - Three-steps AC motors (...M)



EM DUO | 4.600 m³/h

- EM DUO 150 - EM DUO 400
- Sound insulated tube fan with redundant operation
- Built-in ETAMASTER diagonal fans, with the highest aerodynamic efficiency
- CFD optimized 3D impeller and 3D stator blades
- Housing made of galvanized sheet steel
- Motors:
 - High-efficiency EC motors (...EC)



ISOR | 5.620 m³/h

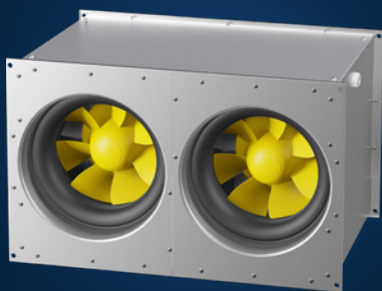
- ISOR 125 - ISOR 500
- With rain cover and IP54 terminal box suitable for outdoor installation, as standard
- Swing-out fan unit
- Backward curved centrifugal impeller
- Motors:
 - High-efficiency EC motors (...EC)
 - Voltage controllable AC motors (...E)
- Design:
 - Fully insulated housing (ISOR)
 - Partially insulated housing (ISORX)

TUBE FANS / DUCT FANS



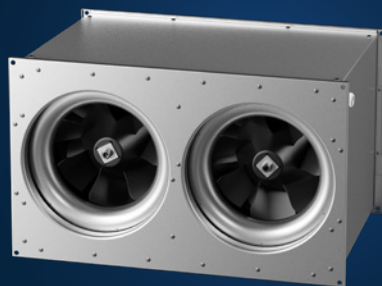
RS | 2.000 m³/h

- RS 100 - RS 315
- High quality sheet steel housing
- RAL 7035 (light grey) powder coated
- Backward curved centrifugal impeller
- Motors:
High-efficiency EC motors (...EC)
Voltage controllable AC motors (...E)



EMKI | 10.400 m³/h

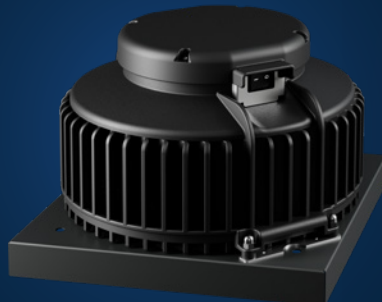
- EMKI 5025 - EMKI 10050
- Built-in ETAMASTER diagonal fans, with the highest aerodynamic efficiency
- CFD optimized 3D impeller and 3D stator blades
- Sound optimized housing
- Removable inspection cover
- Motors:
High-efficiency EC motors (...EC)



ELKI | 10.000 m³/h

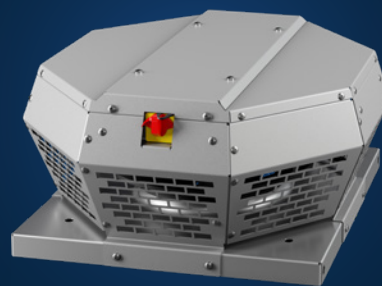
- ELKI 5025 - ELKI 10050
- Built-in ETALINE diagonal fans, with high aerodynamic efficiency
- CFD optimized 3D impeller and 3D stator blades
- Sound optimized housing
- Removable inspection cover
- Motors:
Voltage controllable AC motors

ROOF FANS



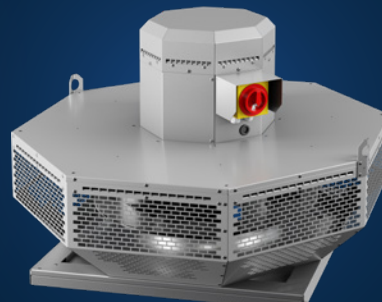
DHA | 1.400 m³/h

- DHA 190 - DHA 250
- Horizontal discharge
- Housing made of weather resistant plastic ASA, RAL 7012
- Backward curved centrifugal impeller
- Swing-out fan unit
- Motors:
High-efficiency EC motors (...EC)
Voltage controllable AC motors (...E)
- Design:
Integrated constant pressure control (...C...)
With device switch (...P.../...R...)



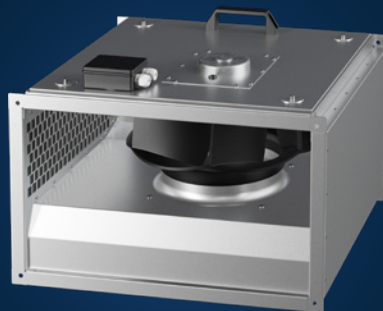
DHA | 18.700 m³/h

- DHA 190 - DHA 630
- Horizontal discharge
- Housing made of weather resistant aluminium AlMg3
- Backward curved centrifugal impeller
- Motors:
High-efficiency EC motors (...EC)
Voltage controllable AC motors (...E)
- Design:
With device switch (...P.../...R...)



DHL | 13.900 m³/h

- DHL 450 - DHL 560
- Horizontal discharge
- Housing made of weather resistant aluminium AlMg3
- Backward curved centrifugal impeller
- Hinged fan unit
- With device switch
- Motors:
High-efficiency EC motors (...EC)
Voltage controllable AC motors (...E)
IEC three-phase motors IE3 (...D)



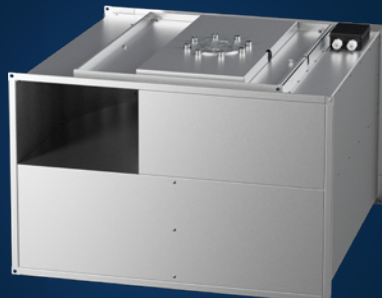
KVRI | 14.800 m³/h

- KVRI 3015 - KVRI 10050
- Sound insulated housing made of galvanized sheet steel
- Swing-out fan unit for cleaning and maintenance
- With peripheral, 20 mm wide standard flange
- Backward curved centrifugal impeller
- Motors:
High-efficiency EC motors (...EC)
Voltage controllable AC motors (...E)



KVR | 14.900 m³/h

- KVR 3015 - KVR 10050
- Housing made of galvanized sheet steel
- Swing-out fan unit for cleaning and maintenance
- With peripheral, 20 mm wide standard flange
- Backward curved centrifugal impeller
- Motors:
High-efficiency EC motors (...EC)
Voltage controllable AC motors (...E)



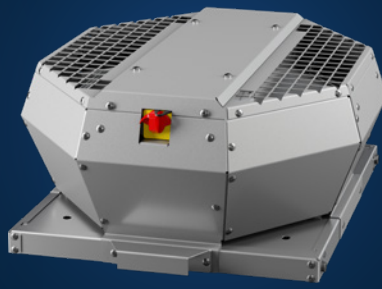
KVT | 9.600 m³/h

- KVT 3015 - KVT 10050
- Housing made of galvanized sheet steel
- Swing-out fan unit for cleaning and maintenance
- With peripheral, 20 mm wide standard flange
- Forward curved centrifugal impeller
- Motors:
Voltage controllable AC motors



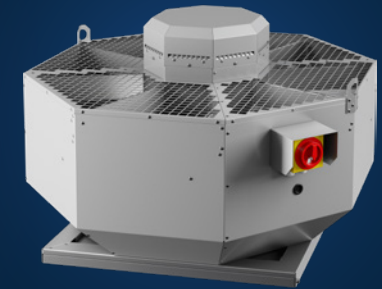
DHN | 15.700 m³/h

- DHN 225 - DHN 630
- Dual-Use 400 °C / 120 min. and 200 °C continuous operation
- Horizontal discharge
- Housing made of weather resistant aluminium AlMg3
- Base plate and inlet nozzle made of galvanized sheet steel
- Backward curved centrifugal impeller with screw tight hub and with Taperlock shaft-hub connection
- With device switch
- Motors:
IEC three-phase motors IE3



DVA | 14.900 m³/h

- DVA 190 - DVA 630
- Vertical discharge
- Housing made of weather resistant aluminium AlMg3
- Backward curved centrifugal impeller
- Motors:
High-efficiency EC motors (...EC)
Voltage controllable AC motors (...E)
- Design:
Hinged fan unit
With device switch (...P.../...R...)
Integrated constant pressure control (...C...)



DVL | 13.080 m³/h

- DVL 450 - DVL 560
- Vertical discharge
- Housing made of weather resistant aluminium AlMg3
- Backward curved centrifugal impeller
- Hinged fan unit
- With device switch
- Motors:
High-efficiency EC motors (...EC)
Voltage controllable AC motors (...E)
IEC three-phase motors IE3 (...D)

ROOF FANS / EXTRACT FANS



DVN / DVNI | 18.500 m³/h

- DVN / DVNI 225 - DVN / DVNI 710
- Smoke extract version: Dual-Use 400 °C / 120 min. and 200 °C continuous operation
- Version for kitchen exhaust: up to 120 °C
- Vertical discharge
- Motor outside the airflow, acc. VDI 2052
- Housing made of weather resistant aluminium AlMg3, swing-out
- Integrated grease pan, with drain
- Backward curved centrifugal impeller
- Motors:
High-efficiency EC motors (...EC)
Voltage controllable AC motors (...E)
IEC three-phase motors IE3 (...D)
- Design:
Sound insulated housing (DVNI)



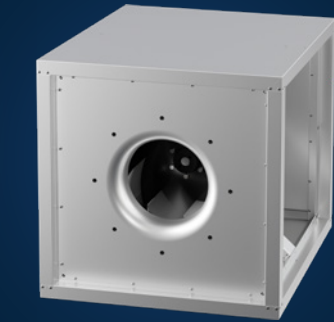
MPC TI | 12.000 m³/h

- MPC TI 225 - MPC TI 560
- Smoke extract version: Dual-Use 400 °C / 120 min. and 200 °C continuous operation
- Version for kitchen exhaust: up to 120 °C
- Motor outside the airflow, acc. VDI 2052
- Insulated, double-wall housing made of galvanized sheet steel
- Casing base with integrated drain
- Backward curved centrifugal impeller with screw tight hub and with Taperlock shaft-hub connection
- Linear airflow
- Motors:
High-efficiency EC motors (...EC)
IEC three-phase motors IE3 (...D)



MPS | 11.800 m³/h

- MPS 225 - MPS 560
- Smoke extract version: Dual-Use 400 °C / 120 min. and 200 °C continuous operation
- Version for kitchen exhaust: up to 120 °C
- Motor outside the airflow, acc. VDI 2052
- Insulated, double-wall housing made of galvanized sheet steel
- Casing base with integrated drain
- Backward curved centrifugal impeller with screw tight hub and with Taperlock shaft-hub connection
- Three possible discharge directions: right / left / top
- Motors:
High-efficiency EC motors (...EC)
IEC three-phase motors IE3 (...D)
Voltage controllable AC motors (...E)



MPC | 22.500 m³/h

- MPC 225 - MPC 800
- Insulated, double-wall housing made of galvanized sheet steel with drain
- Removable side walls for variable design of the discharge direction: right / left / linear
- Backward curved centrifugal impeller
- Attachment of suction-side accessories possible according to Eurovent 1/2
- Motors:
High-efficiency EC motors (...EC)
IEC three-phase motors IE3 (...D)
Voltage controllable AC motors (...E)



MPC T | 22.600 m³/h

- MPC T 225 - MPC T 800
- Smoke extract version: Dual-Use 400 °C / 120 min. and 200 °C continuous operation
- Version for kitchen exhaust: up to 120 °C
- Motor outside the airflow, acc. VDI 2052
- Insulated, double-wall housing made of galvanized sheet steel with drain
- Backward curved centrifugal impeller
- Attachment of suction-side accessories possible according to Eurovent 1/2
- Removable side walls for variable design of the discharge direction: right / left / top
- Motors:
High-efficiency EC motors (...EC)
IEC three-phase motors IE3 (...D)
Voltage controllable AC motors (...E)



MPX | 6.700 m³/h

- MPX 225 - MPX 450
- Motor outside the airflow, acc. VDI 2052
- Single wall housing with integrated wall mounting bracket
- Casing base with integrated drain
- Backward curved centrifugal impeller with screw tight hub and with Taperlock shaft-hub connection
- Motors:
IEC three-phase motors IE3 (...D)
Voltage controllable AC motors (...E)

COMPACT AHU WITH HEAT RECOVERY



ETA K V

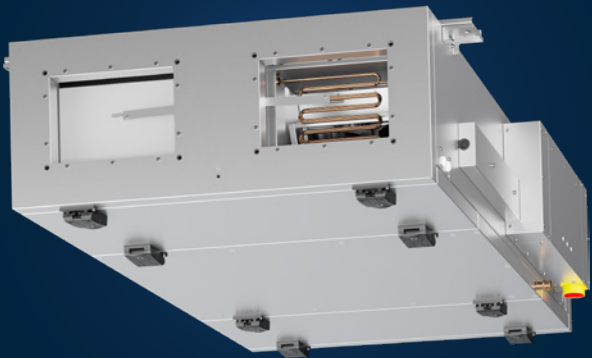
ETA K 700 V - ETA K 5000 V
One-piece and divisible units with vertical air connections are the ideal solution for installation in technical rooms due to their small footprint.



ETA K H

ETA K 700 H - ETA K 7600 H
One-piece and divisible units with horizontal air connections, suitable both for installation in the technical room and, with the appropriate accessories, for outdoor installation.

Our ETA K series is defined by versatility, quality and user-friendliness. Available in three designs - flat, vertical and horizontal - it offers you maximum flexibility for integration in a wide range of applications. The integrated heat exchanger is made from high-quality, corrosion-resistant aluminium and is protected by the controls against icing. New additions to the product range are the separable ETA H and ETA V units, which can even be integrated into existing buildings and have a small footprint. In addition to simple installation, good operability and ease of maintenance, the focus of development was also on fulfilling the highest hygiene requirements in accordance with VDI 6022.



ETA K F

ETA K 700 F - ETA K 3500 F
The ultracompact ETA K F range has been extended with two additional sizes and is suitable for ceiling mounting in office buildings, restaurants, shops or cafés.

COMPACT AHU WITH HEAT RECOVERY



ROTO K V

ROTO K 1050 V - ROTO K 4200 V

Compact design with vertical air connections and reduced space requirements is especially suited for installation in a technical room.

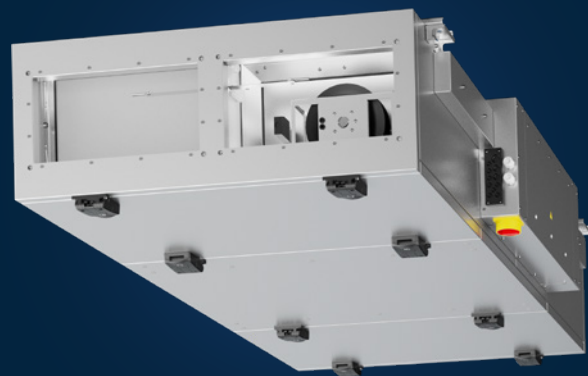


ROTO K H

ROTO K 1050 H - ROTO K 12600 H

One-piece or divisible units with horizontal connections ensure a flexible and easy installation. With rain cover and weather protection hood, the units in this range may be installed outdoor.

The ROTO KOMPAKT series includes compact and divisible units with airflow volumes of up to 20.000 m³/h. It is available with vertical or horizontal connections and is suitable for various applications thanks to its plug & play system. It is equipped with a rotary heat exchanger with a heat recovery rate of up to 90 %. The humidity recovery of 60 % ensures a comfortable indoor climate during winter.



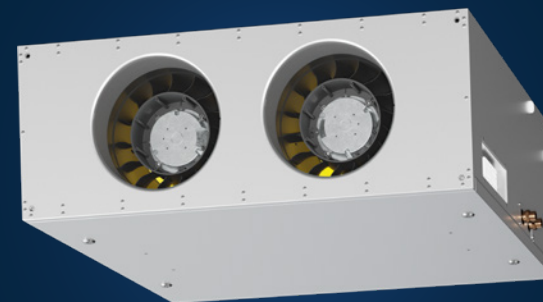
ACCU K F

AKKU K 600 F - AKKU K 2400 F

The ACCU K F series is suitable for suspended ceiling installation in training rooms, office buildings, restaurants or in business premises.

The high-performance heat recovery of over 90 % is based on two static storage masses through which outside air and extract air alternately flow via a flap system.

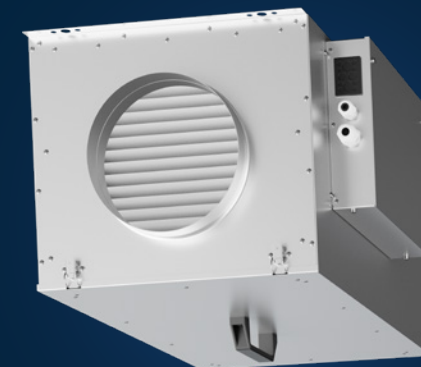
SUPPLY AND EXTRACT AIR UNITS



SLIGHTLINE

SL 6030 - SL 12040

The supply and extract air units of the SL series are used for applications with airflow rates between 1.500 m³/h and 4.400 m³/h.



FFH EC

FFH 125 - FFH 315

The FFH EC air supply units with electric heating are characterised by their compact design. Built-in EC motors and integrated controls allow for easy installation.

The integrated controls of the air supply units allows the connection of an extract air unit for a complete ventilation system.

RUCK APP AND CONTROL UNIT

ruck compact air handling units with heat recovery are supplied fully wired, ready for use and with four pre-configured operating modes: Eco, Night, Comfort and Party. The desired operating parameters can be set to individual requirements on the touch control panel supplied or optionally in the app.



ruck APP

- Contains all functions of the control unit
- Control any number of air handling units from anywhere
- Monitoring of all operating parameters
- Commissioning of the devices possible via app



ruck CONTROL UNIT

- Extensive setting options through smart schedules
- Preconfigured modes for quick and easy commissioning
- Digital temperature/humidity sensor integrated in the control unit

