

THE MULTICOUPLING FOR LARGE MATERIAL HANDLING AND DEMOLITION EXCAVATORS.

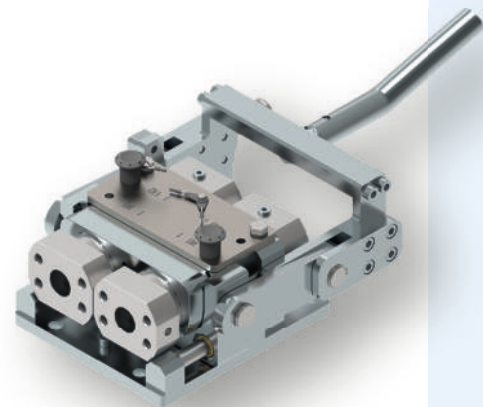
Tool changing, boom separation

ABOUT THE PMK DN25 SERIES

The multicoupling for demolition equipment is used for quick changeover between the earthmoving boom and the long front. The hydraulic lines for the positioning cylinders and the tool can be disconnected and reconnected in seconds.

Depending on the machine configuration, a modular design of the Pister multicoupling will be installed on the excavator stick.






The hammer-resistant, metal-sealed couplings, in nominal size 25, have the lowest flow resistance and can be used up to 375 bar, with 4-fold safety. Flow volumes of up to 800 l/min. with a pressure drop of only 5 bar possible. The 1" couplings have SAE DN32 flanges for high-strength and permanently leak-proof connections.



The PMK DN25 series - the new features!

- Reinforced carrier frame for more rigidity in the mold plate.
- Less play between the coupling inserts for improved anti-rotation.
- Locking pin between coupling and mold plate for minimized tilting play.
- Locking plate between coupling and mold plate, secured with industrial magnets, for minimized longitudinal space.



				
Designation	PMK-10	PMK-13	PMK-20	PMK-25
Coupling type	1	1	2	2
Flow rate l/min. at Δp 3 bar	50 l/min.	90 l/min.	280 l/min.	650 l/min.
Flow rate l/min. at Δp 5 bar	75 l/min.	125 l/min.	380 l/min.	800 l/min.
Max. operating pressure	330 bar	330 bar	450 bar	375 bar
Application range for excavator in t	1 - 3 t	2 - 9 t	10 - 40 t	> 30 t

OUR PROMISE.

Quality.

Hardened tool steel, first class workmanship made in Germany.

Capacity.

Very high flow rates at lowest dynamic pressures, ISO tested.

Efficiency.

Significantly faster working with the right tools.

Security.

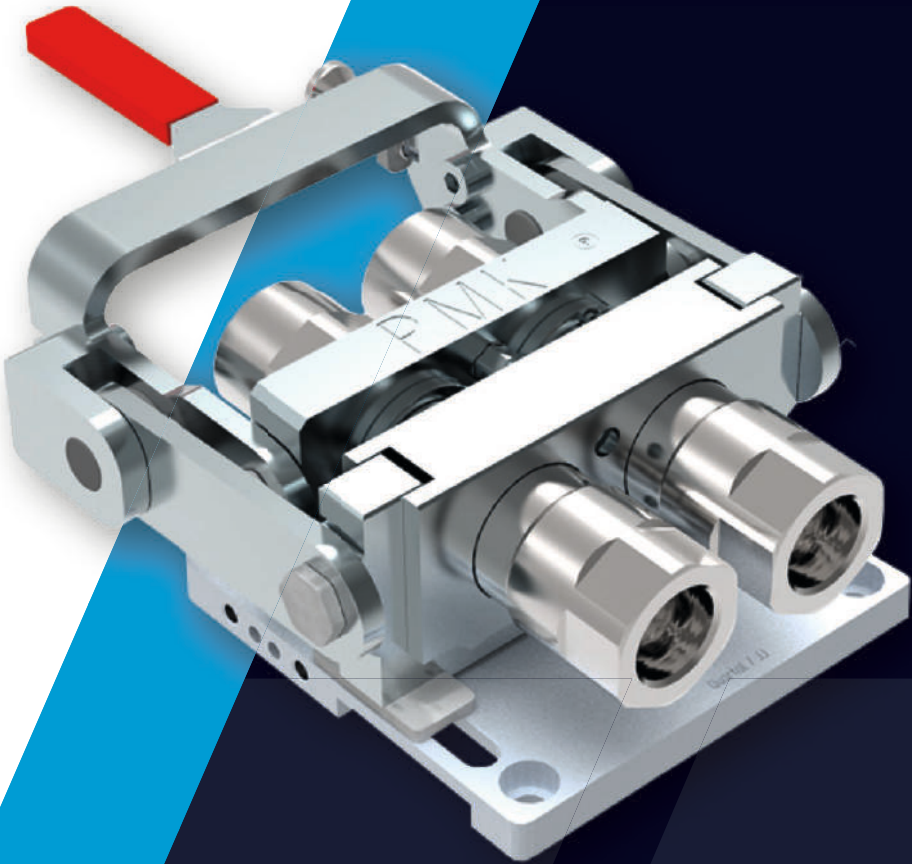
Self-locking and hydraulically locked.

Durability.

Absolutely hammer resistant, highest operating pressures with 4-fold safety.

Compatibility.

THE mechanical system on the market - for all machine types and attachments.



PMK - THE MULTICOUPLING FOR CONSTRUCTION MACHINERY.



HAIN GmbH
Am Riedbach 7
87499 Wildpoldsried

T: +49 8304 30 999 30
E: info@hain-hydraulik.de
www.hain-hydraulik.de



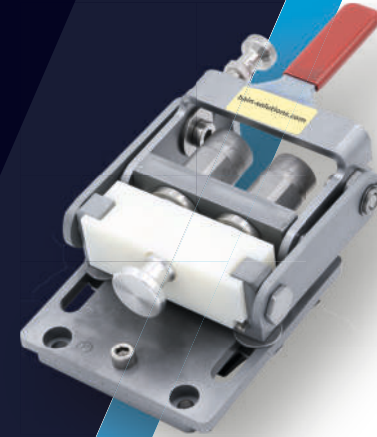
THE MULTICOUPLING FOR MINI EXCAVATORS.

Earthworks, gardening, and landscaping

ABOUT THE PMK DN10 SERIES

Designed for miniature machines from 0.8 t - 2.5 t to change attachments quickly and easily. Even at this machine size flat-face couplings can no longer be coupled by hand under residual pressure in the attachment.

330 bar operating pressure with 4-fold safety and flow rates of up to 75 l/min. at 5 bar pressure loss characterizes this Pister multicoupling system. The coupling inserts have 3/8" BSP connectors are hammer-proof and can be changed individually.



SMALL. COMPACT. POWERFUL.

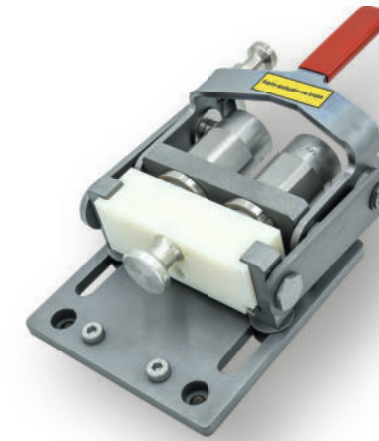
THE MULTICOUPLING FOR COMPACT EXCAVATORS AND COMPACT LOADERS.

Gardening and landscaping, demolition, earthworks

ABOUT THE PMK DN13 SERIES

An extremely flat and compact design is the key benefit of this system. 330 bar operating pressure with 4-fold safety and flow rates of up to 125 l/min. at 5 bar pressure loss characterizes this Pister multicoupling system. The flat-face coupling inserts can be changed individually without specialized tools on site in the shortest time possible.

The motto for this system is: robust, flexible, lightweight and ready for operation at any time. Like every multicoupling from us, they are equipped with a protection plate to cover the plug-in nipples when not in use. The parking stations offer additional protection against dust and coarse dirt for the attachment sided tool plate when uncoupled. As a 1/2" size, the coupling inserts have a 3/4" BSP connection for full passage! Hammer proof of course.



COMPACT. HAMMERPROOF. VERSATILE.

THE MULTICOUPLING FOR LARGE MATERIAL HANDLING AND DEMOLITION EXCAVATORS.

Demolition, material handling, forestry

The PMK DN20 series - the new features

- Profiled anti-rotation locks in the tool plate for even better protection against twisting.
- A solid base plate prevents breakage.
- Rail system with brass bushings for easy opening/closing of the coupling.



ABOUT THE PMK DN20 SERIES

The very robust multicoupling system with up to four extremely powerful coupling inserts has a capacity of up to 380 l/min. at 5 bar pressure loss. ISO tested! The Pister multicoupling operates at up to 450 bars with 4-fold safety and like all our systems are made entirely of hardened tool steel!

The coupling body is metal sealed while double-sealed coupling plugs prevent intake of external dirt. Once coupled there is no soft sealing directly exposed to the oil stream.

In addition, the couplings can be equipped with effective guards that protect against coarse dirt and dust. The main line has a hydraulic lock, preventing unintentional opening under high system pressure. Also, this coupling is a 3/4" size yet has a 1" BSP connection for full power.

MASSIVE.
METALLIC DENSE.
TOUGH.

HAIN
HYDRAULIK

