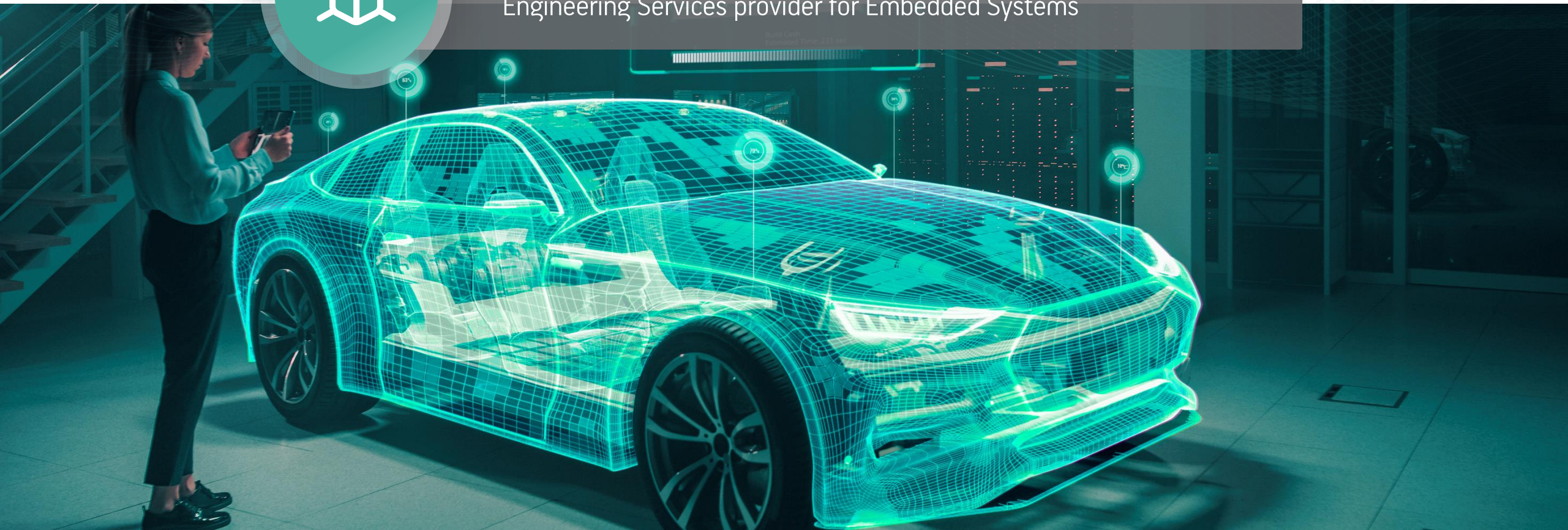


# KENOTOM

EMBEDDED  
ENGINEERING  
EXCELLENCE



Engineering Services provider for Embedded Systems



# Company Overview

KENOTOM launched in 2014 with a small team of experts and a first customer in the automotive industry. The company kept growing constantly, gathering expertise, and soon expanded its activities in the industrial, aviation and medical sectors, employing today almost 200 people. Our customers' satisfaction is the key factor in our constant growth.

We empower our customers through our top technical qualification, flexibility, high availability and sense of responsibility.



## Description

Engineering services provider for Embedded Systems



## Location

Thessaloniki, Greece



## History

Founded in 2014



## Team size

Approx. 200 employees



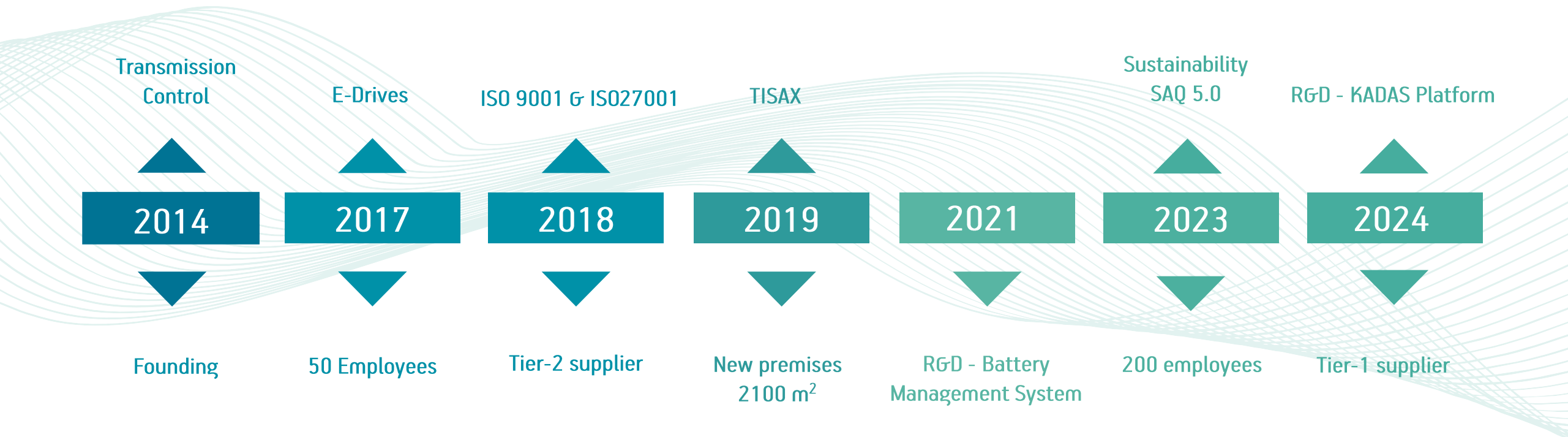
## Clients

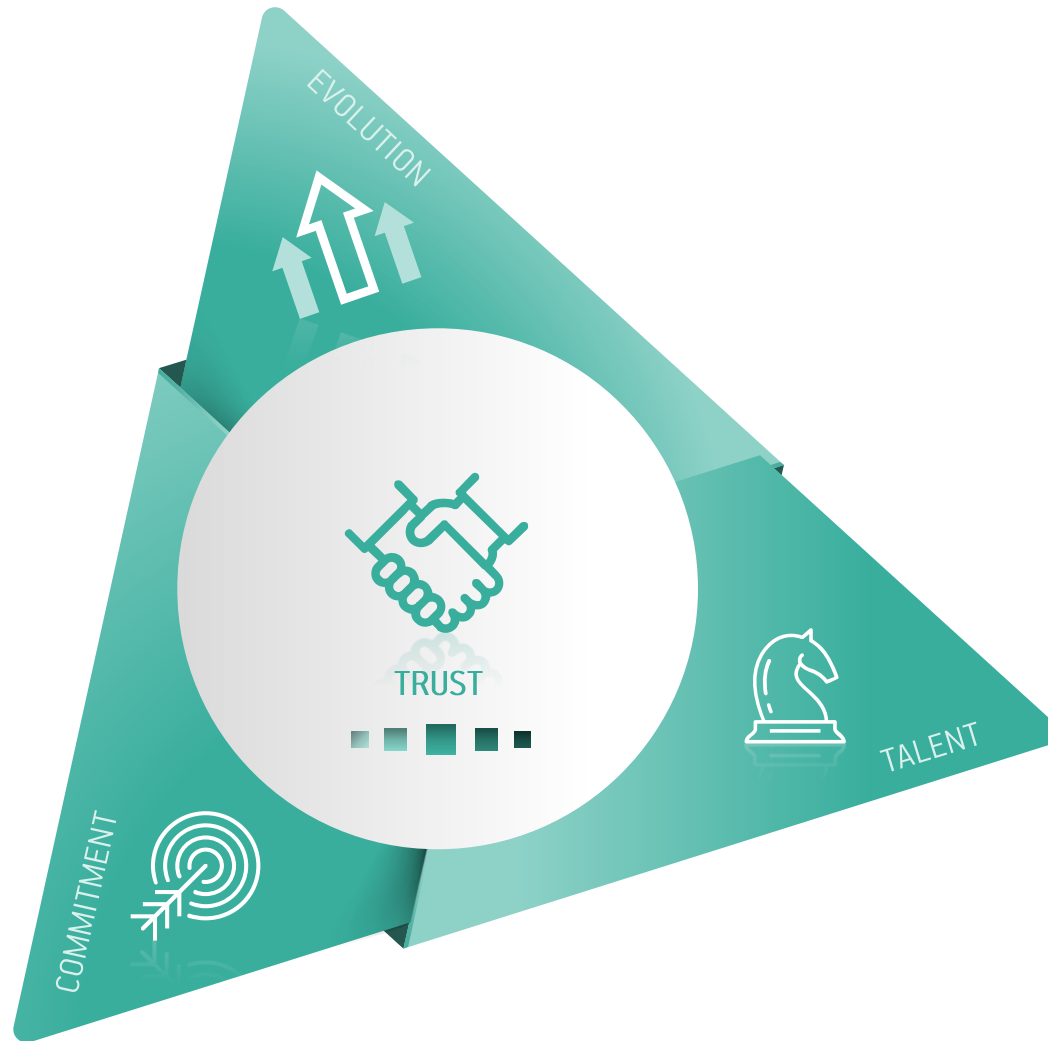
Include major Tier-1 Automotive suppliers



# Company Timeline

The company has been evolving and growing since 2014, with a rapid growth rate reaching 200 employees during the pandemic. This growth is a result of customer satisfaction due to the high quality and expertise of the team, as well as the integration of important industry standards.





# Philosophy & Values

## TRUST

We consider trust to be the most important factor for a prosperous & effective cooperation. Gaining and maintaining it is our priority!

## EVOLUTION

We strive to foresee the upcoming changes in technology and adapt beforehand. Strategy is important in achieving this.

## COMMITMENT

We commit to the final goal and fight to achieve the best solution under all circumstances.

## TALENT

Talent is the key! We employ only the best and train them to become experts.

# Industries Application Areas

## COMMERCIAL ELECTRONICS

Memory Controller Development.



## INDUSTRIAL AUTOMATION

Embedded systems development.



## MEDICAL

Software development and validation.



## AVIATION

Design, development and commissioning of control panels for testbenches.

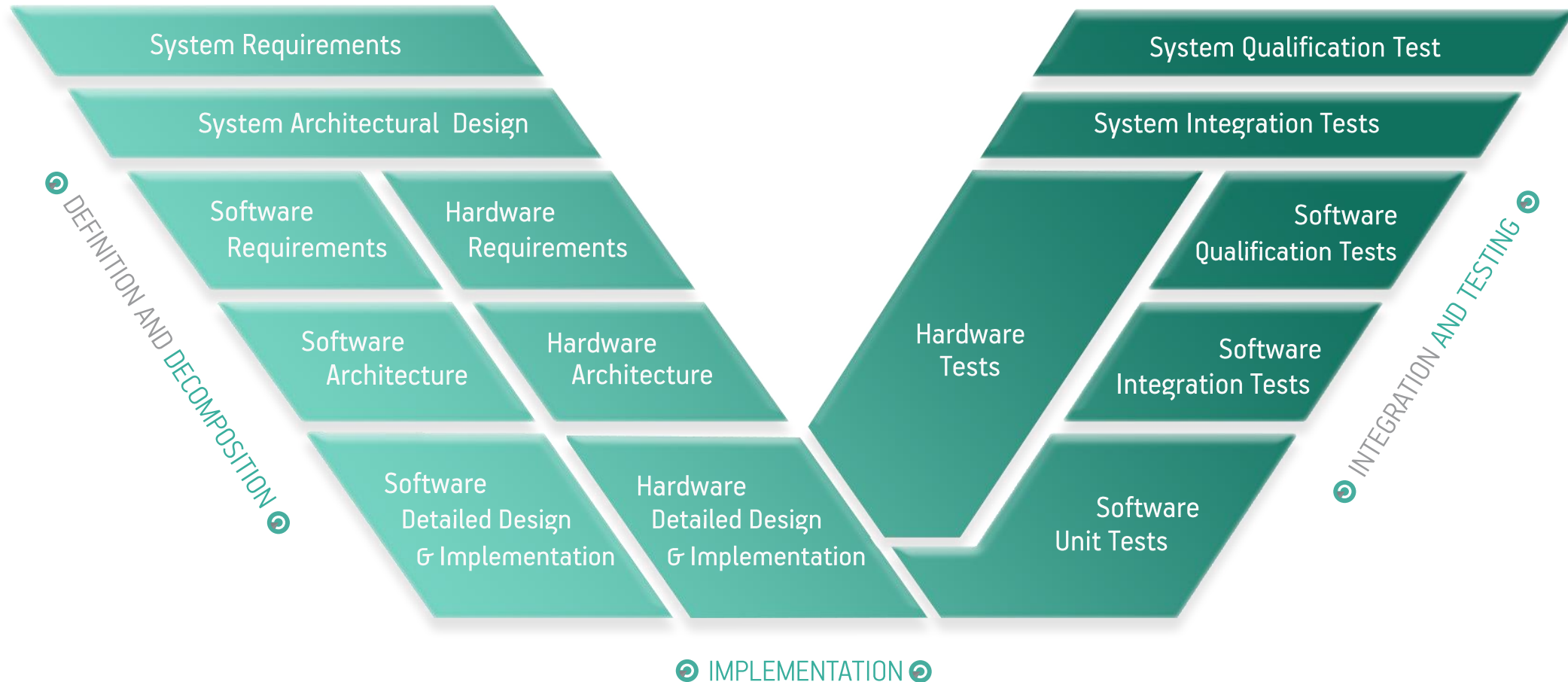


## AUTOMOTIVE

Development and validation of Powertrain, Interior and ADAS ECUs and tools.

# V-Model

Expertise in all engineering processes for system, software and hardware.



# Core Competencies

Analysis, Design, Development & Validation of Embedded Systems

## System and Requirements Engineering

System/Software/Safety, Architecture & Design  
SysML, Doors, IMS, Enterprise Architect, FMEA

## OS & Drivers Development

Bare Metal, Multicore Architecture, Low Level uC & ASIC Drivers

## Embedded Application Software Development

Motor/Transmission, Interior/Exterior lighting, BMS

C/C++ & Matlab-Simulink-Targetlink

Control, Automation, Diagnostics and Safety

Flash Memory Controllers (FTL)

## Electronics design and validation

PCB design, Assembly & Spice simulations  
Worst case/FMEA/FMEDA/DFA/FTA Analyses  
Automotive & Safety-critical applications

## Cyber Security Solutions

Cryptographic libraries & services,  
key management (PKI), TLS protocol

## Vehicle Level Analysis & Diagnostics

Ethernet, CAN/CAN-FD, FlexRay, LIN  
Big Data Analytics, Problem & Test-Management

## HiL Commissioning

Specification-Setup-Installation

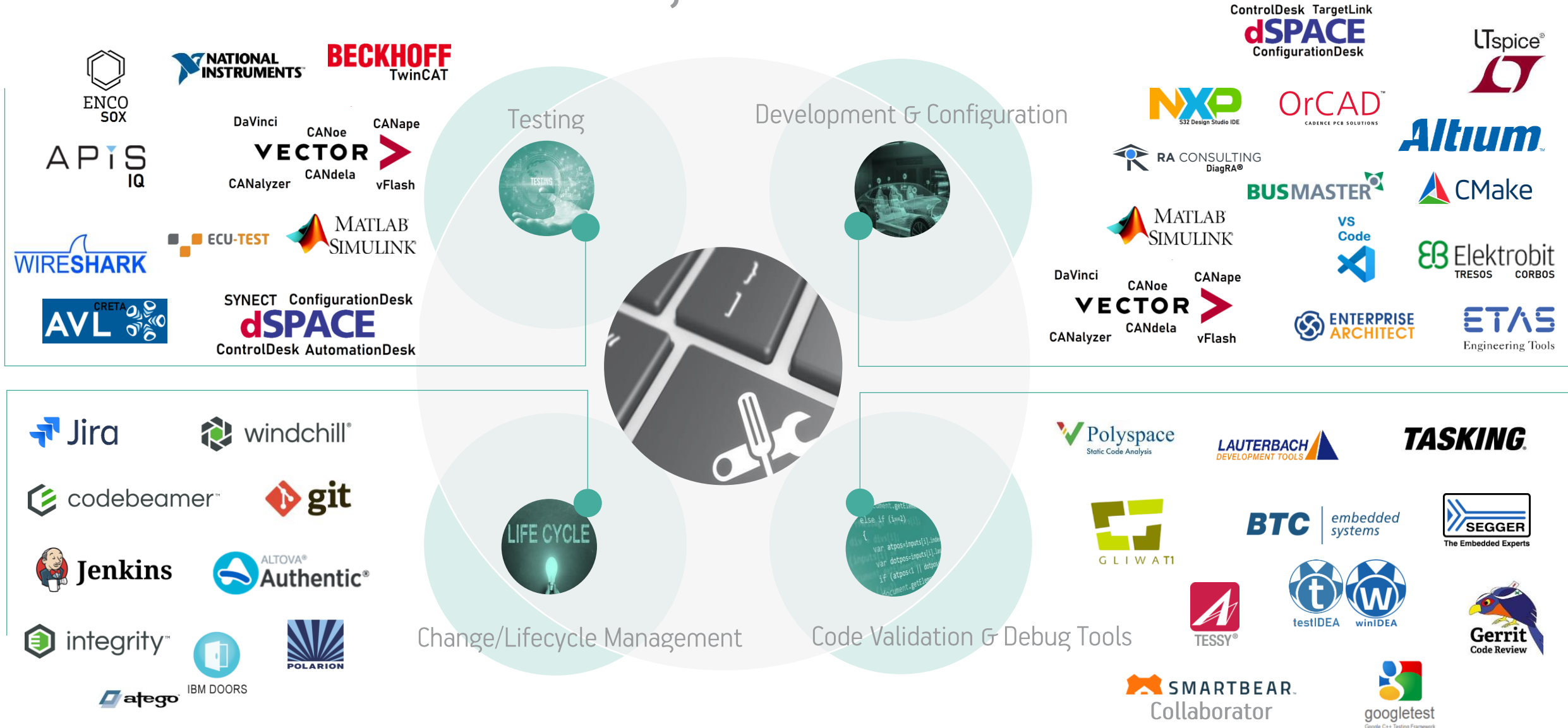
## MiL/SiL/HiL System Modeling & Test Automation

Matlab, Simulink, DSpace HiLs  
Motor/Transmission Control, BMS & ADAS

## Unit Testing and Testautomation

Statement, branch and MC/DC coverage analysis

# Tooling – Used Tools





# Work model - Contracts



## Fixed Price



Well defined projects



## Ticket based



Scrum based projects



## Time & Materials



Kick-Off & Pilot projects or projects with uncertain scope





## Dedicated Team




Customized processes according to client's needs

# Our Facilities

-  2100 m<sup>2</sup> modern office space
-  Total capacity of >220 People



-  Unified IT Infrastructure with isolated VPN according to ISO/IEC 27001

-  VDA-ISA TISAX zones

# Certifications

**ISO/IEC 27001:2013** Information Security Management System

**ISO 9001:2015** Quality Management System

**VDA-ISA TISAX** Scope ID: SMCTL2 & Assessment ID: AKCTL2-3

**ISTQB** Gold partner

# Memberships

**ASAM** ASAM active member & contributor

**AUTOSAR** associate partner membership

**INFINEON** Preferred Design House

**AHK** German-Greek Chamber of Industry and Commerce

**HETiA** Hellenic Emerging Technologies Industry Association





# Collaboration with Universities

## Aristotle University

School of Electrical & Computer Engineering

School of Mechanical Engineering

## International Hellenic University

Department of Information and Electronic Engineering

Department of Computer, Informatics and Telecommunications Engineering

Department of Industrial Engineering and Management

## University of Thessaly

School of Mechanical Engineering

## Democritus University of Thrace

Department of Electrical & Computer Engineering



Kenotom has been contributing and collaborating with the above-mentioned educational institutes providing:

- ✓ *Internships – 20% of the team originates from internships*
- ✓ *Diploma Theses*
- ✓ *Sponsorships / Sponsored PHD's*
- ✓ *RnD Projects*
- ✓ *Consultants in MSc programs*





# Our Strengths

**Significant experience in the automotive industry:** The majority of the engineers is working for Top 5 Tier-1 automotive suppliers

**Cost effectiveness:** High quality engineering in competitive cost compared to central and northern European countries

**Talent:** Highly talented personnel, due to company's reputation in Greece and connection to the academic community

**Onboarding:** Very efficient due to KENOTOM Academy and supporting culture

**High retention rate:** 90-100% since 2015

**Based in the EU:** Cultural and geographical proximity, only one hour time difference with CET – no communication issues

**Strong connection to the academic community:** Very active in internships and diploma theses



# KENOTOM

## Embedded Engineering Excellence

[www.kenotom.com](http://www.kenotom.com)



### Contact Information

Eth. Antistasis 16 GR-55133, Thessaloniki - Greece

+30 2310 315470

[contact@kenotom.com](mailto:contact@kenotom.com)