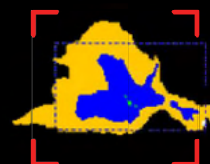
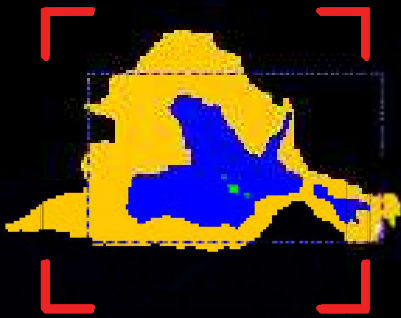


## 360° Early Fire Detection for Maximum Protection



Thermal Radar's fireSENSE Fire Detection system combines advanced fire safety technology with comprehensive threat detection, ensuring that line of sight fire risks are detected and identified before they escalate. Using an inside-out approach to threat detection, our system delivers 360° thermal surveillance with simultaneous detection of multiple targets. Geospatial location-based alerts and customizable detection zones allow you to prioritize areas of interest, ensuring full site coverage and rapid response to any threat.





## Tracking Fire Growth in Real Time

fireSense by Thermal Radar continuously measures line of sight heat sources as they increase in size and intensity, ensuring that real fires, which become larger and hotter over time, are swiftly detected and monitored. This early identification triggers alerts, enabling you to respond quickly before a small spark turns into a major disaster.



### Dependable Fire Detection, Anytime, Anywhere

Thermal Radar's state-of-the-art fire detection system is designed to protect areas by spotting fire risks in real-time. Whether you're securing industrial facilities, critical infrastructure, or remote locations, our technology can detect and alert on line of sight fire threats before they escalate, ensuring a timely response and minimizing any potential damage.



### Advanced Detection, Minimal False Alarms

Thermal Radar's unique system identifies true fire threats by analyzing heat patterns, ensuring that only fire-related activities trigger fire alerts. Our technology helps to ensure that heat sources like machinery or sun reflections are excluded, keeping the focus on real dangers without overwhelming you with false alarms.



### Minimal Infrastructure, Maximum Coverage

By reducing the need for excessive hardware and licensing costs, our solution delivers full 360° line of sight fire and threat detection while minimizing infrastructure investments. This not only cuts down on installation time but also ensures more efficient operations, perfect for large facilities and open areas.



### Seamless Integration with Existing Systems

fireSENSE by Thermal Radar easily integrates with existing security infrastructure, providing a cohesive fire detection and surveillance solution. This allows for real-time slewing to potential fire threats, improving monitoring and response efficiency.

## Accurate Alerts, Even at a Distance

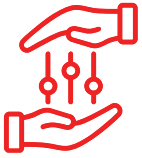
Thermal Radar's fireSENSE Fire Detection system is built to accurately detect fires at both close or extended line of sight ranges, with customizable detection settings tailored to the unique needs of your location. Our technology adjusts for distance, enabling precise detection of potential fire threats across your perimeter without compromising accuracy, no matter the specific demands of your site.





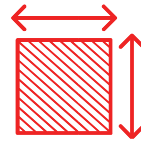
# Protecting What Matters Most

Thermal Radar's edge analytics offer robust fire detection with seamless slew-to-cue integration, enabling PTZ cameras to provide real-time, targeted monitoring. This passive thermal detection system reduces device count, lowers infrastructure costs, and ensures reliable performance. Our proprietary adaptive analytics minimize false positives, delivering accurate fire detection even in complex environments. Optional upgrades are available to add human and vehicle detection, as well as AI-powered insights for deeper analysis.



## Tailored Sensitivity for Virtually Any Environment

Each site is different, and so is its fire risk. With customizable fire sensitivity, you can adjust how the system responds to specific heat levels, ensuring optimal protection for almost every environment—from industrial sites, storage facilities, and recycling centers to open fields.



## Wide-Area Critical Infrastructure Protection

From oil and gas fields, and battery and auto storage facilities, to electrical substations and recycling centers, Thermal Radar delivers 360° protection. Our fire detection solution monitors open or enclosed spaces to detect and respond to fire risks wherever they arise, providing an extra layer of security to your most important assets.



## Built for Extreme and Varying Conditions

Harsh environments and challenging conditions are no match for fireSENSE by Thermal Radar. Our fire detection technology is designed to work reliably in high-risk areas, ensuring uninterrupted line of sight protection no matter where the threat may emerge.



## Continuous Precision That You Can Trust

Too much sensitivity can lead to false alarms, while too little could mean missing a fire. Thermal Radar strikes a balance, ensuring maximum detection of real fire threats while minimizing disruptions from other heat sources.

## Why Choose fireSENSE for Fire Detection?

- **Real-time Alerts:** Prompt notification of fire threats to reduce response time.
- **Wide Coverage:** Protects most any area with 360° line of sight monitoring.
- **Minimized False Alarms:** Excludes non-fire heat sources, reducing unnecessary alerts.
- **Customizable Settings:** Tailor the system to meet your site's unique fire risks.
- **Built for Tough Environments:** Reliable performance in extreme, remote, and industrial settings.





**fireSENSE**  
BY THERMAL RADAR



## Ready to safeguard your site with fireSENSE?

Trust our cutting-edge technology to provide the comprehensive protection you need — anytime, anywhere.



[www.thermalradar.com](http://www.thermalradar.com)



[sales@thermalradar.com](mailto:sales@thermalradar.com)

THERMAL  
RADAR



1450 West 105 North Orem, UT 84057 USA

