

Description

Upsyde road plates are manufactured using a proprietary patented technology that converts low-quality plastic waste into durable goods. The process closes the loop for plastic waste that is usually being incinerated or landfilled. The road plates are versatile, robust, and durable, allowing their use in a variety of applications such as construction, farming, gardening, landscaping, forest, quarry, events, tent basis.

Benefits

- Extremely durable and impact-resistant (nearly unbreakable)
- >95% recycled plastic content
- Diverts plastic waste from incineration or landfill
- Weatherproof
- Chemical-resistant
- Easy to clean
- Anti-slip surface structure
- Lightweight compared to steel
- Customizable branding/logo
- Multiple sizes available



Technical Data

Dimensions (cm)	Weight (kg)	Load Bearing (t)			Standard truck	
		Paved	Unpaved dry	Unpaved wet	Stacks	Total
243 x 123 x 1.5	44	40	10	4	10	400
243 x 123 x 2.0	58	50	15	5	10	350
300 x 100 x 1.5	45	45	15	4	12	480
300 x 100 x 2.0	60	55	20	5	12	420

The technical data provided in this sheet is accurate to the best of our knowledge, information, and belief at the time of publication. It serves as guidance for safe handling, use, processing, storage, transportation, disposal, and release, and is not to be misconstrued as a warranty or quality specification. Technical data are guidelines values based on experience and tests at 20 C. The data may vary based on intended use, product features, raw materials used and environmental influence. For individual applications, our sales team can provide the specific data you need upon request.



Heavy-Duty Mats

sales@upsyderecycling.com

+31 (0) 49 563 01 10

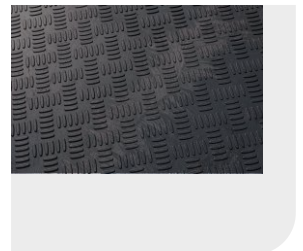
www.upsyderecycling.com

Description

Upsyde heavy-duty mats are manufactured using a proprietary patented technology that converts low-quality plastic waste into durable goods. The process closes the loop for plastic waste that is usually being incinerated or landfilled. The mats are versatile, robust and durable, allowing its use in a variety of applications such as construction, landscaping, forest, quarry, ships, trucks, and off-shore applications.

Benefits

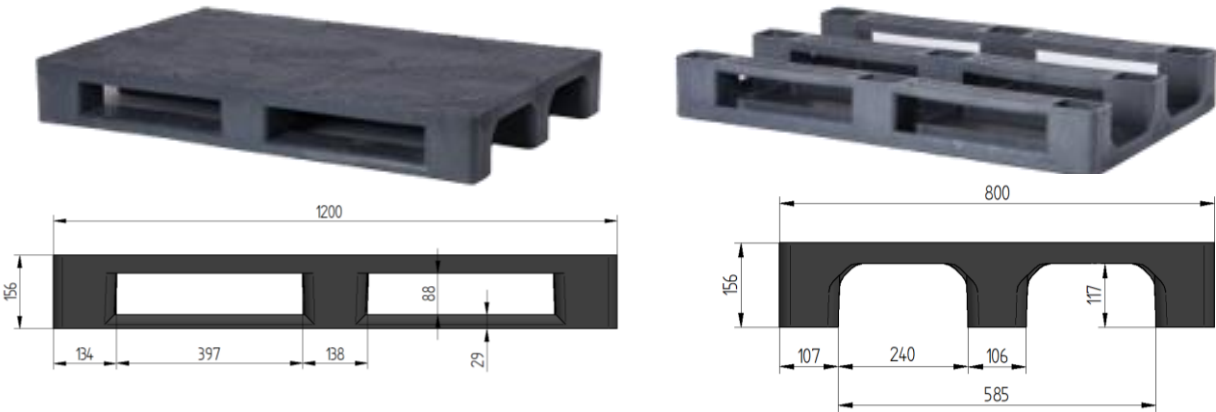
- Extremely durable and impact-resistant (nearly unbreakable)
- >95% recycled plastic content
- Diverts plastic waste from incineration or landfill
- Weatherproof
- Chemical-resistant
- Easy to clean
- Anti-slip surface structure
- Lightweight compared to steel
- Customizable branding/logo
- Available in customizable sizes



Technical Data

Dimensions (cm)	Weight (kg)	Load Bearing (t)*
300 x 100 x 4	120	Up to 100
300 x 100 x 8	240	Up to 150

*Depending on the underground conditions



Description

Upsyde pallets are manufactured using a proprietary patented technology that enables the conversion of low-quality plastic waste into durable products. The process closes the loop for waste that is usually being incinerated or landfilled. The Upsyde pallet is versatile, robust and durable, allowing its use in a variety of applications in distribution and storage systems.

Benefits

- Extremely durable and impact-resistant
- Moisture- and weather-resistant
- >95% recycled plastic content
- Diverts plastic waste from incineration or landfill
- Non-slip due to structure and material
- Also available with a smooth deck
- Closed deck for easy cleaning
- Customizable branding/logo
- ISPM 15 compliant without chemical or temperature treatment



Technical Data

Dimensions (cm)*	Weight (kg)	Material code	Racking load (kg)	Impact resistance	Stacks	Total
120 x 80 x 16	25	M1	250	High	33	495
		M2	500	Medium		
		M3	750	Low		

tolerance 5%

tolerance +/- 1 kg

*Explore further dimensions on our website

The technical data provided in this sheet is accurate to the best of our knowledge, information, and belief at the time of publication. It serves as guidance for safe handling, use, processing, storage, transportation, disposal, and release, and is not to be misconstrued as a warranty or quality specification. Technical data are guidelines values based on experience and tests according to ISO 8611 with evenly distributed loads at 20 C. The data may vary based on intended use, product features, raw materials used and environmental influence. For individual applications, our sales team can provide the specific data you need upon request.