

PIVOT DOOR SYSTEM PIVOT80

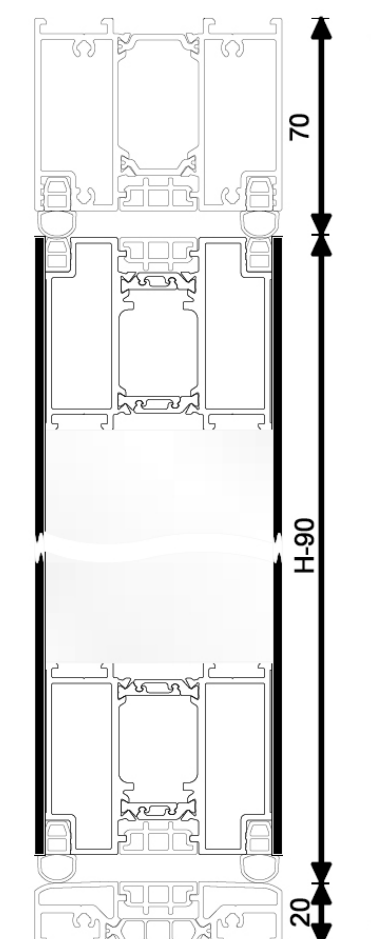
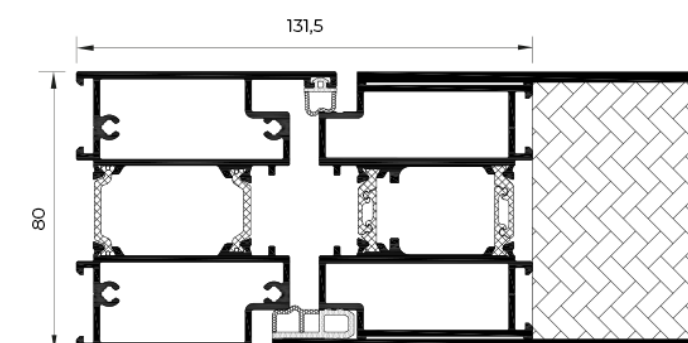
PIVOT DOOR SYSTEM, BONDED ON BOTH SIDES

All pivot doors come with the following basic features:

- 80 mm thickness profile
- 80 mm thickness panel
- 25 mm THICKNESS ALUMINIUM SHEET
- FLUSH PANEL WITH FRAMES BOTH SIDES
- 3 POINTS LOCK
- Glass thickness for sidelights: 32 mm (Consult other values)
- Core EPS ($d=30 \text{ kg/m}^3$)
- Maximum door height: 3.000 mm
- Maximum door width: 2.100 mm
- Aluminium frame and panel in powder paint finish
- Thermal seal with shear-free insulating profile
- Safety cylinder
- Low threshold in between the side frames
- EPDM joints
- Lever handle
- Air permeability: CLASS 4
- Watertightness: CLASS 5A
- Wind resistance: CLASS C5

Optional extras:

- Motorised lock, with different types of electronic openings available: fingerprint, bluetooth, code, card...
- Handle: concealed, from catalogue, customized...
- Hidden door closer
- Motorised opening
- High safety cylinder
- Electronic or digital wireless spyhole
- Sidelight: glazed, paneled, bonded...



Novelty release!

PIVOT DOOR
NATURA 5
Colour: RAL Oxide
Details: Natural stone

DOORBLOCK SYSTEM

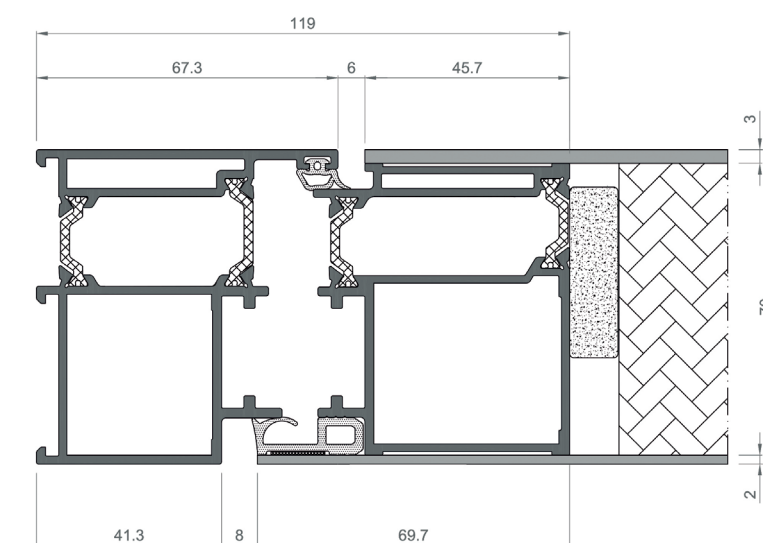
COMPLETE BONDED DOOR SYSTEM ON BOTH SIDES

All DOORBLOCK doors come with the following basic features:

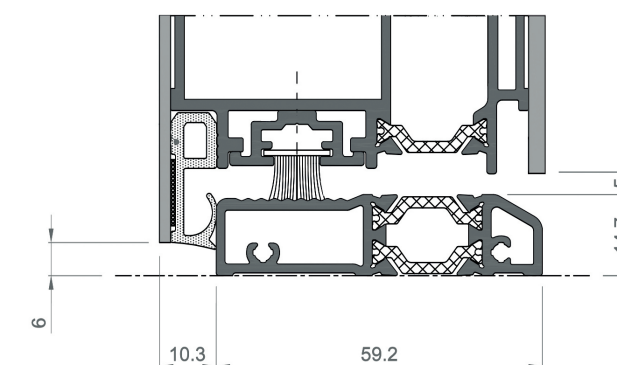
- 70 / 80 mm thickness profile
- 70 / 80 mm thickness panel
- 2'5 mm THICKNESS ALUMINIUM SHEET
- FLUSH PANEL WITH FRAMES BOTH SIDES
- 3 POINTS LOCK
- VISIBLE HINGES (at least 3, powder painted in the color of your choice, except woodgrain)
- Glass thickness for sidelights: 24 mm and 40 mm (consult other values)
- Core EPS ($\rho=30 \text{ kg/m}^3$)
- Maximum door height: 3.000 mm with visible hinges
2.700 mm with hidden hinges
- Maximum door width: 1.800 mm with visible hinges
1.500 mm with hidden hinges
- Aluminium frame and panel in powder paint finish
- Solid panel or panel with triple laminated glass and double chamber for better insulation
- Thermal seal with shear-free insulating profile
- Safety cylinder
- Low threshold in between the side frames
- Lever handle
- Air permeability: CLASS 2
- Watertightness: CLASS 2A
- Wind resistance: CLASS C4
- Impact resistance: CLASS 5 (SOLID)
- Maximum acoustic insulation: $R_w=28$ (-4; -4) dB (SOLID)
 $R_w=30$ (-2; -2) dB (GLASS)
- Thermal transmittance: $U_w=1'1 \text{ W/m}^2\text{K}$ (SOLID)
 $U_w=1'6 \text{ W/m}^2\text{K}$ (GLASS)

Optional extras:

- Motorized lock, with different types of electronic opening available: fingerprint, bluetooth, code, card...
- Handle: concealed, from catalogue, customized...
- Hidden hinges (at least 3)
- Hidden anti-lever system
- Hidden door closer
- Motorised opening
- High safety cylinder
- Electronic or digital wireless spyhole
- Double door
- Sidelight: glazed, paneled, bonded...



DOOR THRESHOLD:



AVPLUS 9

Colour: RAL 9005
Glass type: Mat
Accessory: 139
Details: Stainless steel