

Logistikbude Automates The Most Annoying Process in Logistics

B2B Reusable Asset Management on Autopilot





Nearly All Companies Actively Utilize Reusable Assets. Managing Them Incurs Higher Costs than Anticipated.

Those Managing Reusable Packaging These Days **Are Paying a High Price**

Due to documentation, booking and reconciliation, the use of reusable assets causes high personnel costs. At the same time, shrinkage rates and slow turnaround times lead to immense costs in the form of additional purchases and capital commitment.



Personnel Expenses **EUR 14,5* Billion p. a.**

Documentation, booking and coordination with partners tie up 2 % of all logistics employees in a company



Repurchase Due to Shrinkage **EUR 25* Billion p. a.**

Due to shrinkage, companies have to repurchase around 10% of reusable packaging every year



Capital Commitment **EUR 37.5* Billion p. a.**

Existing reusable assets lead to capital commitment costs of 15% of the value of the pool

The Packaging & Packaging Waste Regulation **Is Forcing Us to Act**



Stricter EU Requirements

The new EU 'PPWR' regulation will impose much stricter requirements on B2B returnable packaging in future:

- Disposable objects to be increasingly replaced by reusable ones
- Labelling obligation
- Obligation to participate in collection and recycling programmes



Digitisation as a Response

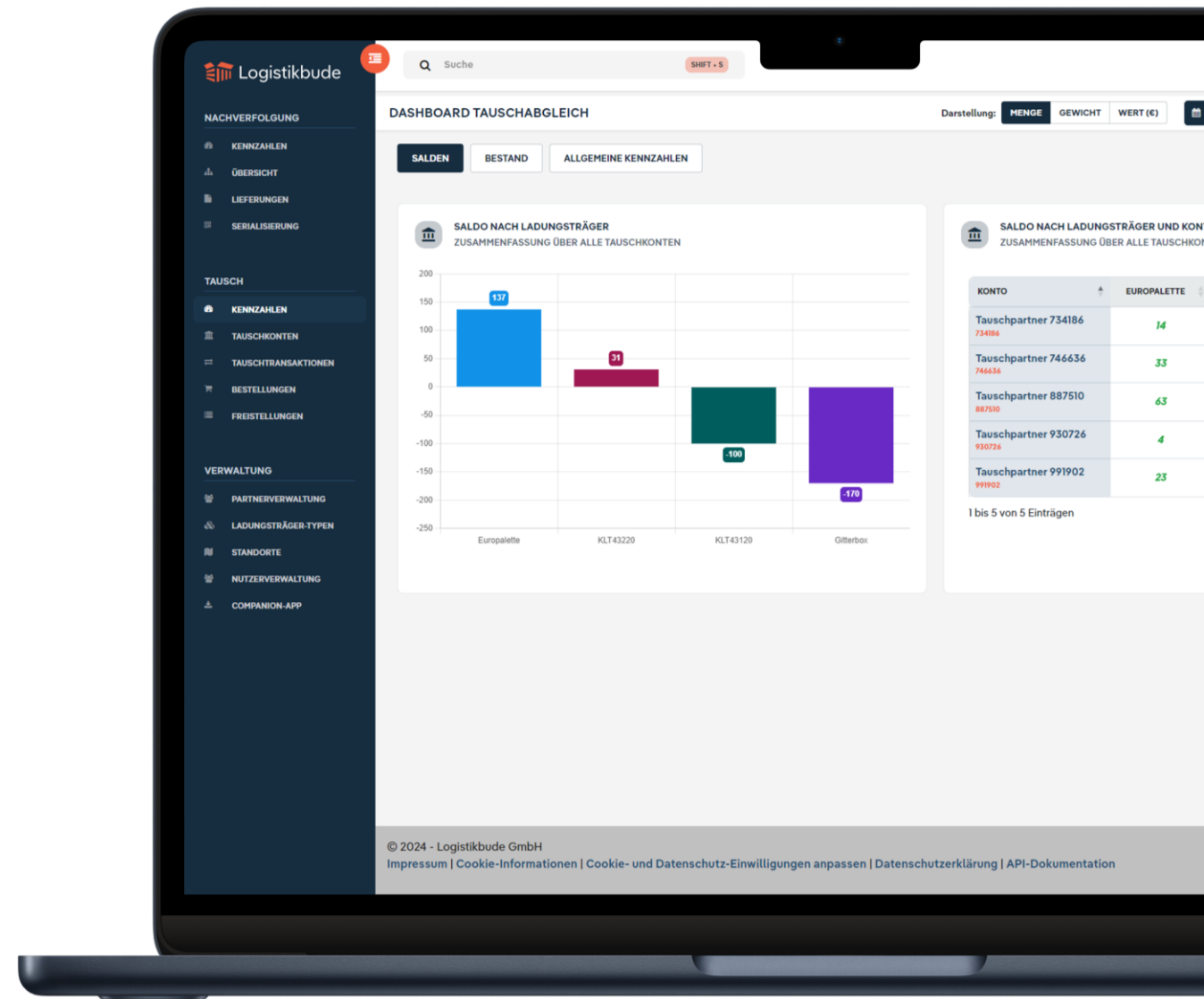
Without digitalisation, the PPWR requirements are almost impossible for firms to implement:

- Detailed reporting including key sustainability figures
- Traceability of the packaging used
- Every company is responsible for compliance with the PPWR



All Returnable Assets in One Centralised Software

With the Logistikbude software solution, shippers, logistics service providers and retailers can manage all their reusable assets in a neutral and technology-independent manner. From standard load carriers (e.g. pallets or containers) to customised load carriers (e.g. racks) and special solutions such as cargo bikes or reusable crockery.



We Make State-of-The-Art Technologies for Reusable Management **Simple to Use**

Simplicity

Our software is designed to be self-explanatory. You can manage users, locations, accounts and load carriers yourself. Thanks to the innovative cloud approach, you start directly and without your own infrastructure.

Data Security

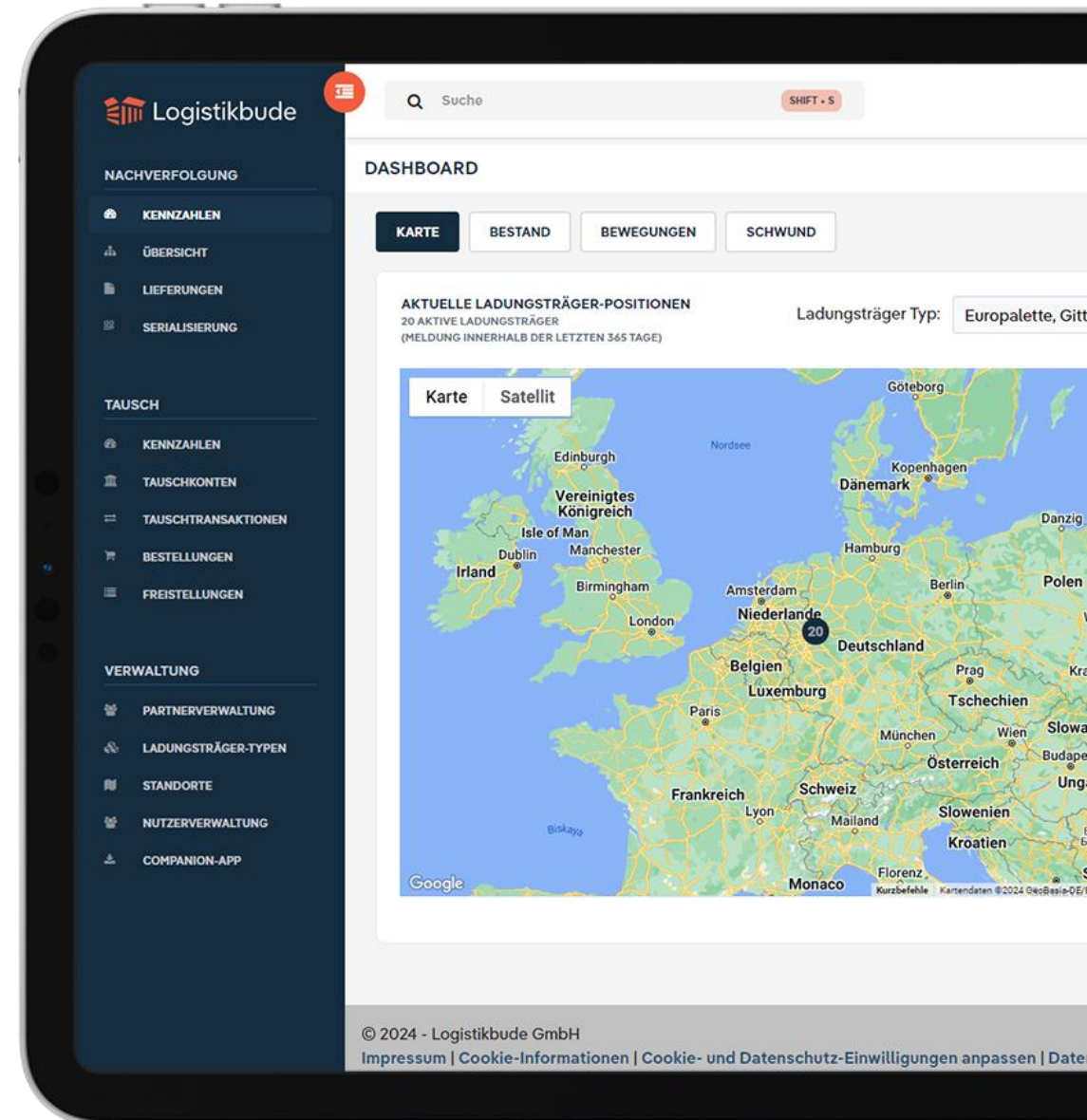
Our software is operated on Microsoft servers in Western Europe and therefore offers the highest standards of data security and availability. If your company uses Office 365 today, the data is stored on the same servers.

Independence

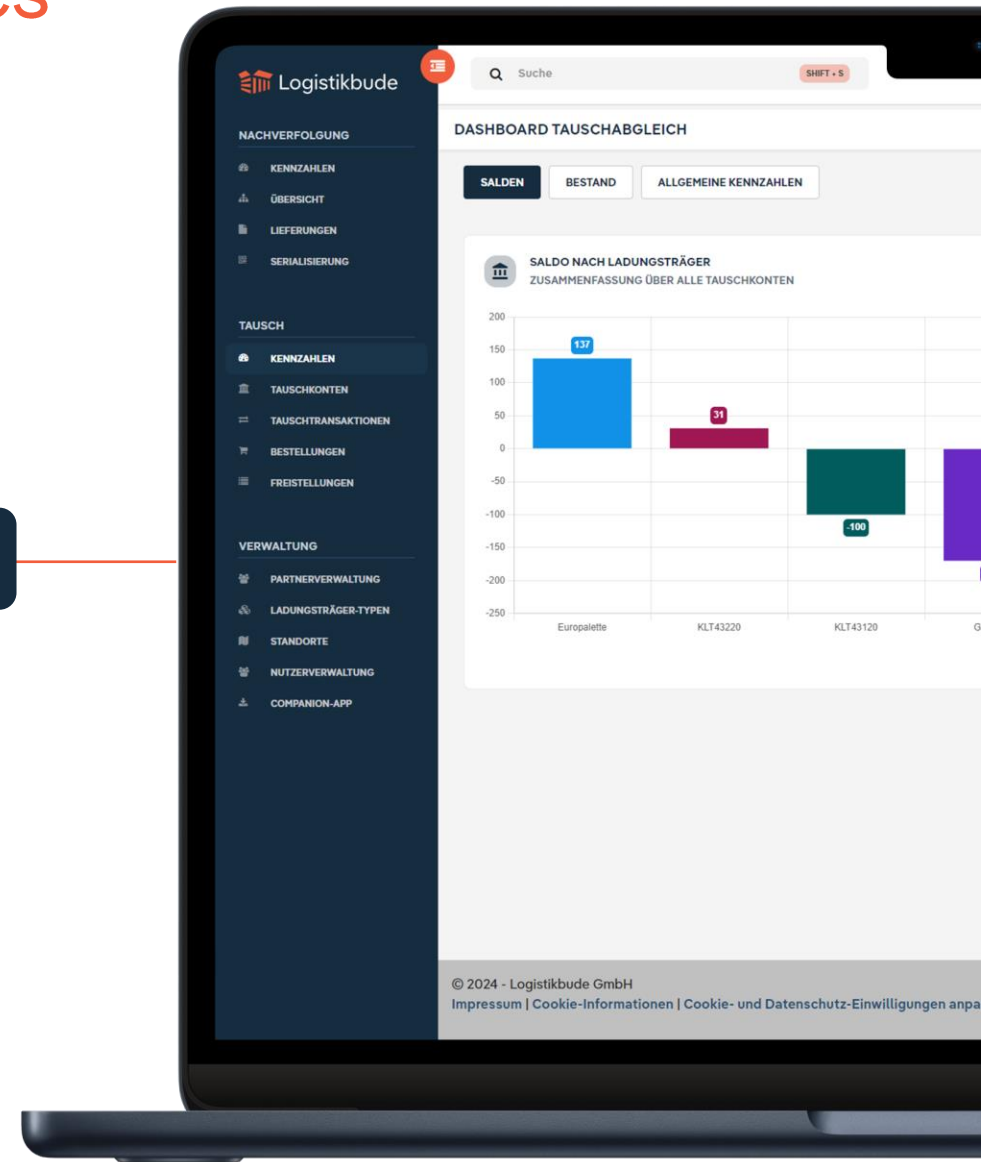
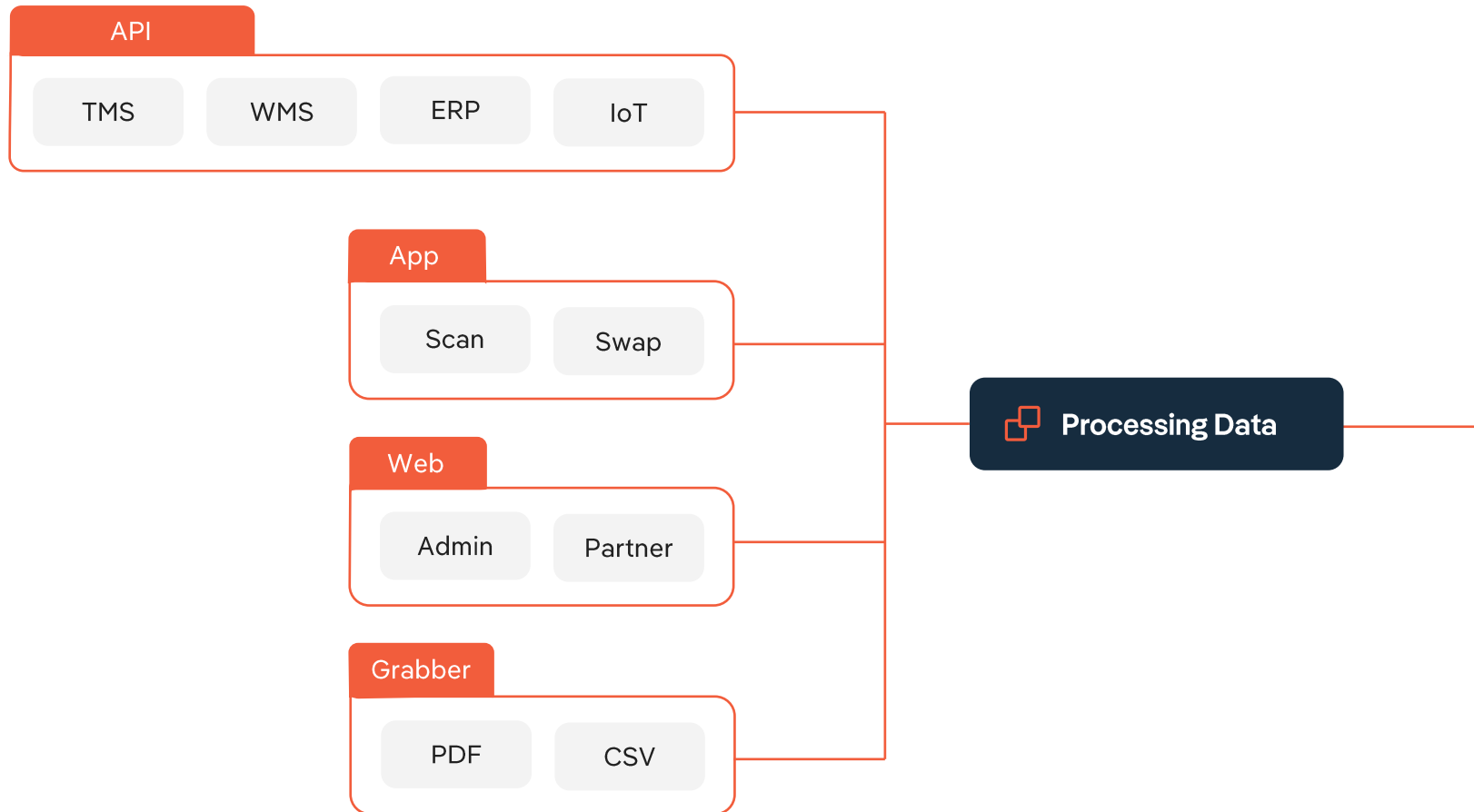
You can use our software to manage all returnable objects. To do this, we combine data from your systems (TMS, WMS, ERP etc.) with our software (app & web) and partner solutions (RFID, IoT, tracker etc.).

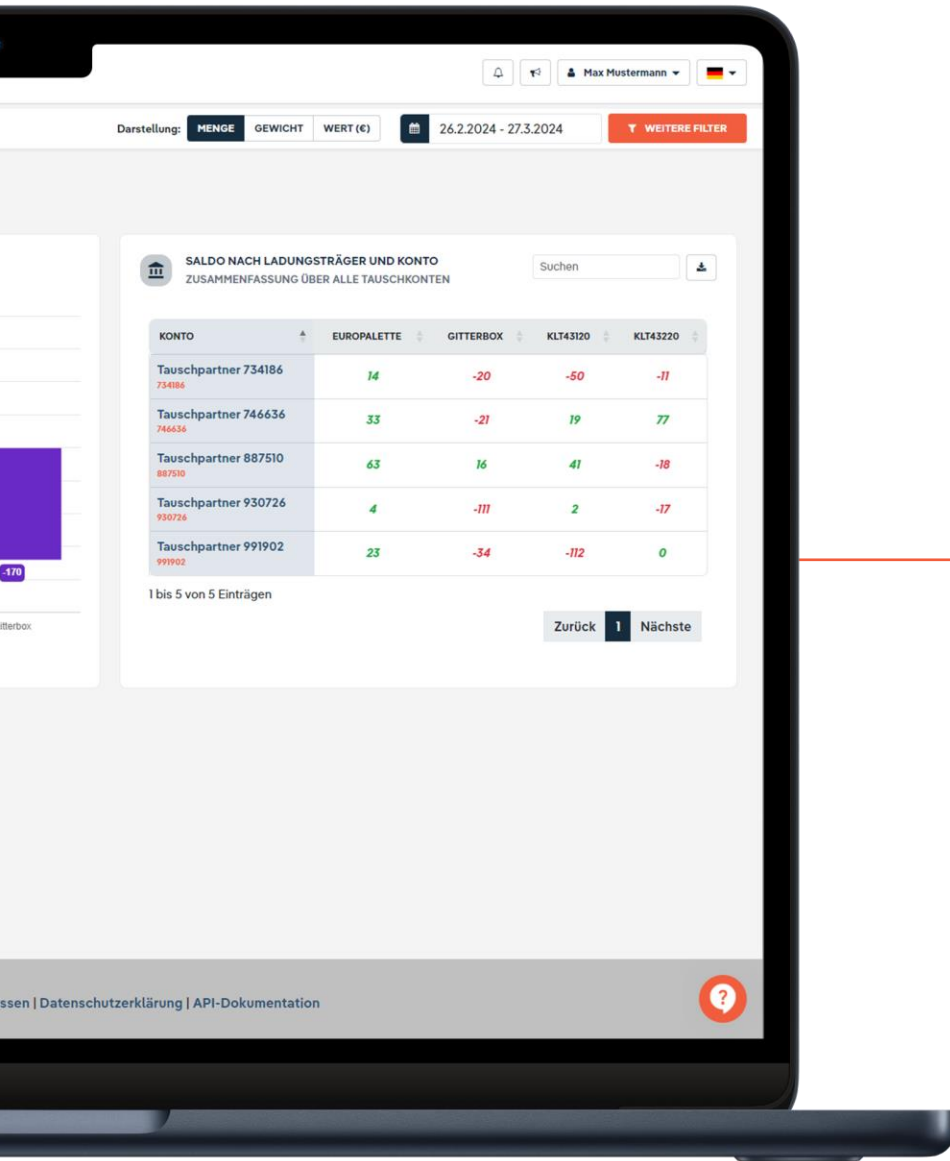
Expertise

We always combine software with expertise in the digitalisation of packaging. Our team has been advising on reusable packaging and developing software in this area for over 30 years at Fraunhofer IML.



How Does It Work? The ERP for Returnables





The screenshot shows the 'Logistikbude' web application. At the top, there's a header with the company name and logo. Below it, a navigation bar includes a search bar, a user profile dropdown (Max Mustermann), and a language selector (German flag). The main content area displays a table titled 'SALDO NACH LADUNGSTRÄGER UND KONTO' (Balance by carrier and account). The table has columns for 'KONTO' (Account), 'EUROPALETTE', 'GITTERBOX', 'KLT43120', and 'KLT43220'. The data is organized by exchange partner (Tauschpartner). The table shows balances for five different partners, with values in green (positive) and red (negative). A sidebar on the left contains a search bar and a list of filters. At the bottom, there's a footer with links to 'Datenschutzerklärung' and 'API-Dokumentation'.

| KONTO | EUROPALETTE | GITTERBOX | KLT43120 | KLT43220 |
|----------------------|-------------|-----------|----------|----------|
| Tauschpartner 734186 | 14 | -20 | -50 | -11 |
| Tauschpartner 746636 | 33 | -21 | 19 | 77 |
| Tauschpartner 887510 | 63 | 16 | 41 | -18 |
| Tauschpartner 930726 | 4 | -111 | 2 | -17 |
| Tauschpartner 991902 | 23 | -34 | -112 | 0 |



Utilising Data



Creating Transparency

Stocks, balances, shrinkage, turnaround times and much more in real time.



Automating Processes

Notifications, coordination with customers, suppliers and service providers



Realising Added Value

Accounting for rent and shrinkage, forecasting, optimisation and impact KPIs

How Do We Help Business Specifically?

Selection of Relevant Use Cases

✓ often ○ rarely ✗ never

| | Industry | Logistics | Retail | Pooling |
|--|----------|-----------|--------|---------|
| Manage & Reconcile Accounts | ✓ | ✓ | ✓ | ✓ |
| Inventory Management & Demand Planning | ✓ | ✓ | ○ | ✓ |
| Ordering & Release by Partners | ✓ | ○ | ○ | ○ |
| Customer Transparency as Added Value | ○ | ✓ | ✗ | ✓ |
| Billing Rent & Shrinkage | ✓ | ○ | ○ | ✗ |
| Connection of Partners via App | ○ | ○ | ○ | ✓ |
| Log Tracking Data | ○ | ○ | ✗ | ○ |
| Record the Status of Assets | ✓ | ✓ | ✓ | ✓ |

HAVE
HYDRAULIK

FEGA & SCHMITT
ELEKTROGROSSHANDEL

DB **SCHENKER** *Emoris*

 **sennder**

DACHSER
Intelligent Logistics

 **Landgeflügel**

bekuplast 

HARDERS
Logistik

IPP | CARRYING
IMPACT

PALOG
High Performance Pooling

RECARO

What You Can Expect from Us

Reliable and Straightforward.
That Suits Us and Our Software.
We Are The Logistikbude.



Leading Technology

Real-time cloud approach that combines quantity booking, serial numbers and IoT in one. Based on Fraunhofer technology and operated on Microsoft.



Independence

All reusable assets in one solution, regardless of types and technologies. This means scalability and flexibility for the future.



Standard Product

Can be used immediately and within a few minutes, thanks to modern UX design. Ongoing further development based on user feedback.

Business Case



Medium-Sized Industry Company

Medium-sized industrial company was struggling with inefficient load carrier management: high capital commitment, constant repurchasing due to shrinkage and time-consuming administration were a burden on profitability.

Today's Costs

- Capital commitment for load carriers: EUR 500,000
- Repurchase due to shrinkage: EUR 25,000 p. a.
- Personnel costs for administration: EUR 40,000 p. a.

Potential Through Use of Logistikbude

- 95 % reduction in shrinkage due to increased transparency
- 40 % reduction in personnel costs

Software Costs

- One-time (interfaces, onboarding incl. training): EUR 5,000
- Ongoing costs (operation, support & development): EUR 500 per month

Return on Investment (ROI)

- Savings potential: EUR 3,310 per month
- ROI (incl. own expenses): less than two months

Business Case



Large Industrial Enterprise

A major industrial company was facing major load carrier management hurdles: enormous capital was tied up, shrinkage required constant replenishment and complex administrative tasks were slowing down operational performance.

Today's Costs

- Capital commitment for load carriers: EUR 10,000,000
- Repurchase due to shrinkage: EUR 300,000 p. a.
- Personnel costs for administration: EUR 200,000 p. a.

Potential Through Use of Logistikbude

- 20 % reduction in shrinkage due to increased transparency
- 40 % reduction in personnel costs

Software Costs

- One-time (interfaces, onboarding incl. training): EUR 35,000 Ongoing costs (operation, support & development): EUR 5,000 per month

Return on Investment (ROI)

- Savings potential: EUR 35,000 per month
- ROI (incl. own expenses): less than two months

Business Case



Large Logistics Service Provider

For a renowned logistics service provider, high personnel costs in returnable goods management represented a key challenge: inefficient processes and constant shrinkage impaired profitability and required urgent optimisation.

Today's Costs

- Repurchase of pallets due to shrinkage: EUR 300,000 p. a.
- Personnel costs for maintaining exchange accounts: EUR 1,000,000 p. a.

Potential Through Use of Logistikbude

- 20 % faster turnaround time thanks to automatic notifications
- 40 % reduction in shrinkage due to increased transparency
- 30 % reduction in personnel costs

Software Costs

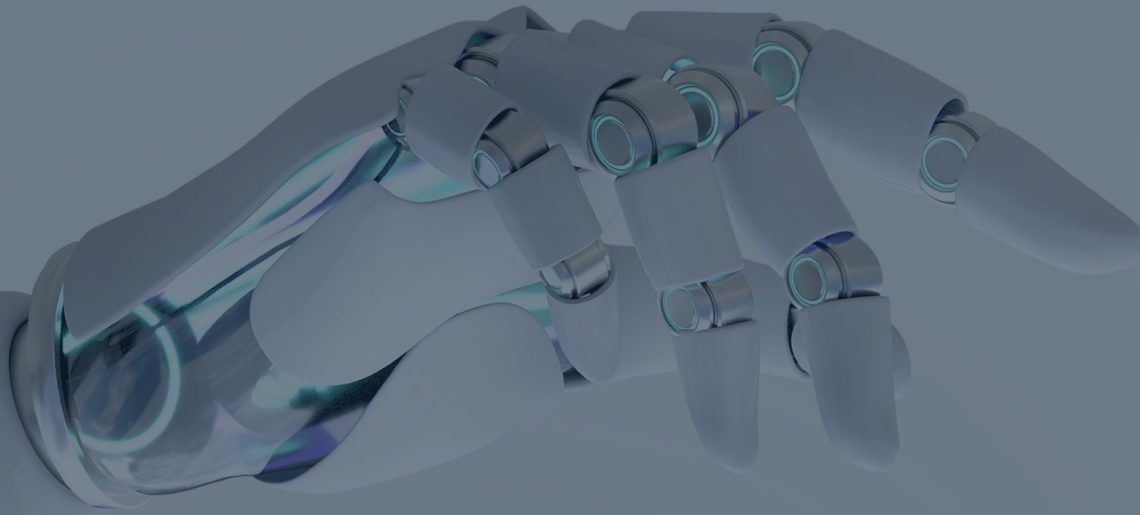
- One-time (interfaces, onboarding incl. training): EUR 20,000
- Ongoing costs (operation, support & development): EUR 4,500 per month

Return on Investment (ROI)

- Savings potential of EUR 20,000 per month
- ROI (incl. own expenses): two months



Additional revenue: management of customised reusable objects for an additional charge



Our approach is to combine **standard software with specialised consulting** in order to fully automate returnable packaging management.

We place the highest value on simplicity.

Your Path to The #Bude



Dr. Philipp Hüning

Co-Founder & CEO

philipp@logistikbude.de

+49 151 225 270 14

