

# BADEN-WÜRTTEMBERG — Home of innovation drivers in ICT.

## ICT: GROWTH AND INNOVATION DRIVER IN BADEN-WÜRTTEMBERG

Baden-Württemberg (BW) holds a leading position in the German information and communications technology (ICT). Alongside automotive and mechanical engineering, the ICT sector is one of the larger economic sectors in the German Southwest. The highly innovative industry makes an above-average contribution to overall economic growth in the state. As a cross-sectional technology, it also facilitates and prompts many product and process innovations. The German

Southwest is home to several global players in the ICT industry. For instance, SAP AG with its seat in Walldorf is the international market leader in the field of enterprise software. In the Stuttgart region, IBM maintains one of the biggest research and development centres outside the USA. Last but not least, a large number of small and medium-sized companies in the industry – often very successful "hidden champions" internationally – are at home in Baden-Württemberg.



### IMPORTANT INDUSTRY IN BW

216,818 employees: third-largest workforce after the automotive and mechanical engineering sectors.



### TOP POSITION IN GERMANY

About 40 % of all R&D investments in the German ICT industry are made by companies in BW.



ABOUT  
**60**  
BN EUROS  
TURNOVER AT ICT  
COMPANIES



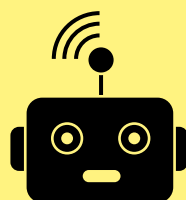
ATTRACTIVE TO  
FOREIGN COMPANIES  
e.g. IBM, HP, Sony



2ND MOST IMPORTANT  
INDUSTRY FOR R&D  
IN BW

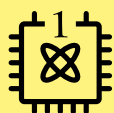
MORE THAN  
**16,000**  
ICT COMPANIES  
IN BW

ABOUT  
**6%**  
ICT SHARE OF GROSS  
VALUE ADDED



### INNOVATIVE ICT SECTOR

About 14% of R&D investment in the overall economy of Baden-Württemberg comes from the ICT sector.



FIRST QUANTUM COM-  
PUTER IN EUROPE FROM  
IBM AND FRAUNHOFER

### HOME OF

SAP, Schwarz Digits,  
TeamViewer, GFT  
Technologies, Bechtle,  
Accenture Song  
and many more.



**Baden-Württemberg**  
**THE LÄND**



### EXCELLENT RESEARCH

e.g. at the FZI Research Center for Information Technology, the Fraunhofer Institutes and renowned universities



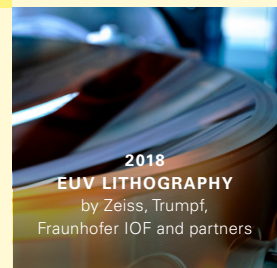
**HIGHLY QUALIFIED  
YOUNG TALENT**  
broad range of  
study courses in ICT



**1972  
SAP SOFTWARE**  
by SAP founders



**1984  
GERMANY'S FIRST  
E-MAIL**  
at the University of  
Karlsruhe (TH), today KIT

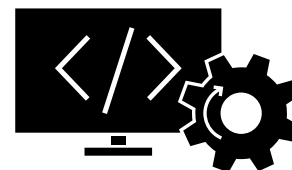
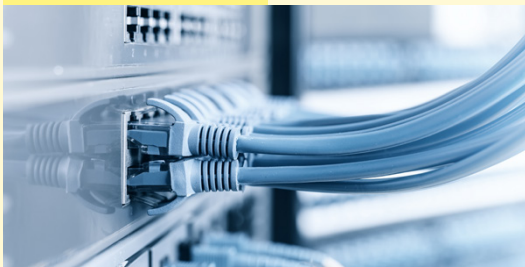


**2018  
EUV LITHOGRAPHY**  
by Zeiss, Trumpf,  
Fraunhofer IOF and partners

**FOCAL POINTS IN**  
software development,  
enterprise software,  
IT consulting,  
cloud services,  
virtual reality, high  
quality hardware and  
quantum computing



**TOP RESEARCH IN  
THE CYBER VALLEY**  
unique research centre  
for AI in Europe



### INTERDISCIPLINARY AND POWERFUL

Supercomputer for science and industry at  
the High Performance Computing Center  
Stuttgart (HLRS).



**KNOWLEDGE AND TECH-  
NOLOGY TRANSFER**  
thanks to many clusters,  
initiatives and networks



**CLOSELY CONNECTED**  
ICT sector and industrial and  
service sector end users



**GLOBAL TOP  
LOCATION**  
No. 2 in enterprise  
software after the  
Silicon Valley

### YOUR GATEWAY TO THE MARKETS OF THE EU



Find out more about the information and  
communications technology sector in  
Baden-Württemberg (BW), the business  
location and your opportunities to invest:

**[www.bw-invest.de/en/](http://www.bw-invest.de/en/)**



Baden-  
Württemberg  
International

**Baden-Württemberg  
International GmbH (BW\_i)**  
Lautenschlagerstraße 21/23  
70173 Stuttgart, Germany  
T +49 711 22787-0  
info@bw-i.de  
**[www.bw-i.de/en/](http://www.bw-i.de/en/)**



Follow us:  
LinkedIn  
X  
Facebook

## WE ARE YOUR PARTNER on the path to success!

Baden-Württemberg International is the central point of contact for foreign investors in Baden-Württemberg (BW) and provides assistance to companies and research institutions that either wish to settle or expand their operations in the German Southwest. Talk to us!



We provide information  
about BW.



We find the right partner  
and location for you.



We connect you with  
all important players.



We support you in  
administrative procedures.