



COMPANY PROFILE



We are Uniwell Electronic Ltd.

A professional printed circuit board (PCB) manufacturing company and a comprehensive product solutions provider.

Specialized in SS, DS to 10L & Aluminum PCB.

Our Mission & Core Values



Reliability Through Partnership

become most reliable strategic partner in
the industry



Integrity & Continuous Improvement

integrity, stability with long-term vision,
seek for continuous improvement to
improve operational cost



CSR Integration & Ethical Practices

integrate corporate social responsibility
into our decisions and practices

Our Strengths



Communication

- provide a full range of the best optimization & process solution
- open communication internally & externally



Quality

- excellent quality management system with effective training and experienced operators



Teamwork

- experienced management
- effective coordination & cooperation

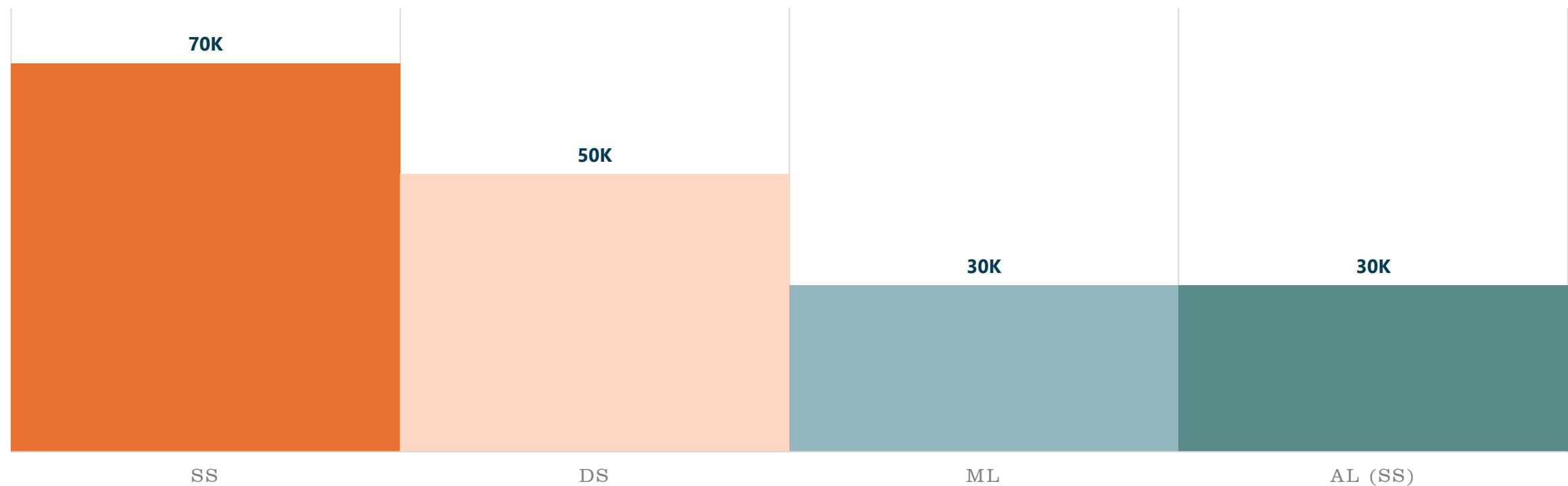


Service

- flexible logistic arrangement
- strong customer support
 - competitive pricing
 - one stop shop

Our Capacity

MONTHLY CAPACITY (SQUARE METERS PER MONTH)



Source: Uniwell internal data 2024

Our Capability

Panel

- SS 510*630mm
- DS 558*635mm
- ML 546*622mm
- Aluminum 546*622mm

Hole

- Size 0.15mm
- Tolerance:
PTH +/- 0.075mm,
NPTH +/- 0.025mm

Aluminum:

- Size 0.15mm
- Tolerance: +/- 0.025mm

Line

- 3.0 mil / 3.0 mil
- Copper Thickness 1/3 - 4oz
- Register Tolerance +/- 0.05mm

Aluminum :

- 4.0 mil / 4.0 mil
- Copper Thickness 1/3 - 2oz
- Register Tolerance +/- 0.05mm

Solder Mask

- S/Dam 0.07mm
- S/Opening 0.03mm
- Register Tolerance +/- 0.05mm
- S/Plug \leq 0.6mm

Aluminum :

- S/Dam 0.1mm
- S/Opening 0.05mm
- Register Tolerance +/- 0.05mm

Finishing

In-House:

- ENIG:
Ni 2.5-8.0 μ m,
Au 0.025-0.075 μ m
- OSP 0.2-0.5 μ m

Outsource:

- Gold Plate 0.0075-0.02 μ m
- LFHAL \geq 1.0 μ m
- Im Tin \geq 1.0 μ m
- Im Silver 0.8 - 1.0 μ m

Outline

- Profile Tolerance +/- 0.10mm
- V-cut Angle tolerance +/- 5°
- Core Thickness +/- 0.05mm

Final Product

- Thickness Tolerance +/- 10%
- Warpage Tolerance \geq 0.75%

Package

- 330*275*220mm
- 330*230*260mm
- 270*260*230mm
- 270*230*260mm

Shipment

- Ex-works Factory
- FOB Sea HK
- FCA Air HK
- Courier

Our Factory

Dongguan Uniwell Electronic Ltd.

Total investment: USD10,000,000

Staff: 400

Areas (sq. meter)	
Land	11,500
Plant	7,000
Office	1,000



Factory Workshop Introduction

Products:

SS, DS to 10L & Aluminum PCB

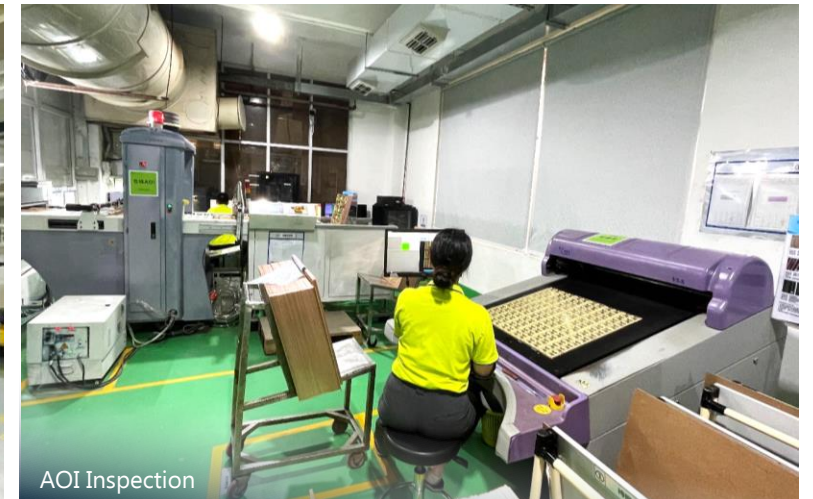
Manufacturing:

Low Mix High Volumes

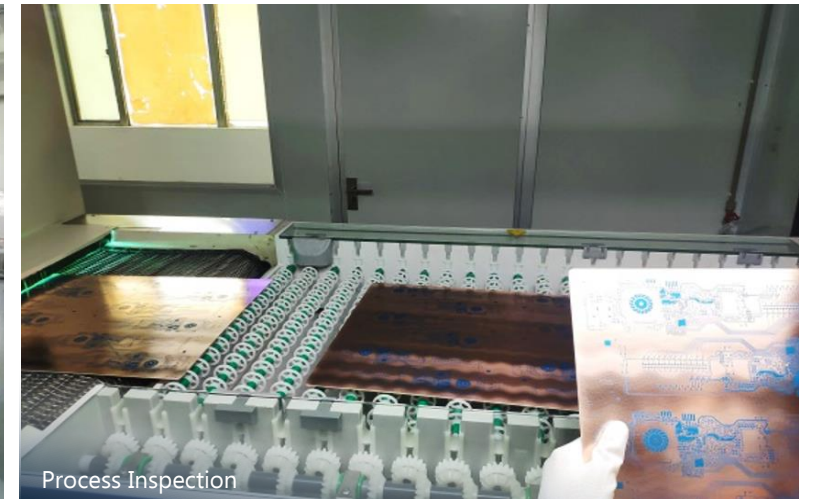
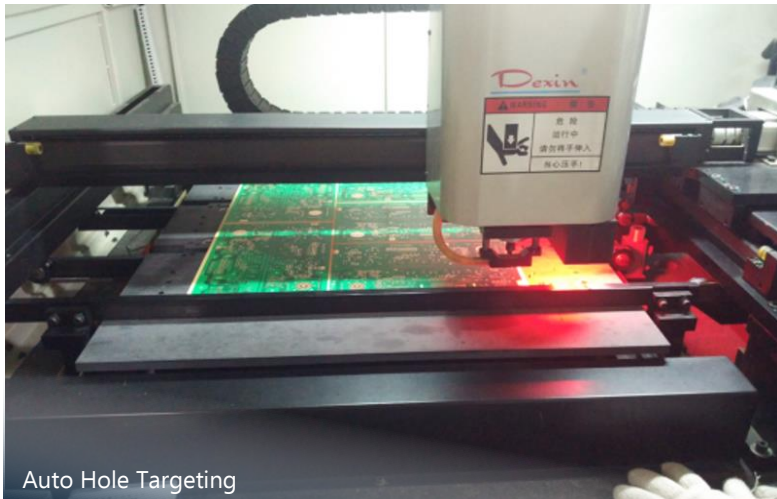
Medium Volumes

Certificates:

ISO9001, ISO14001, TS16949



Factory Workshop



Factory Workshop



LDI Photo Exposure



Automatic SS Line (2)



UV Cure



Auto Silk Screen Printing



Solder Mask Inspection



SS Auto Etching Line

Factory Workshop



DS Copper Tin Etching Line



AVI machine



Laboratory



High Temp Oven

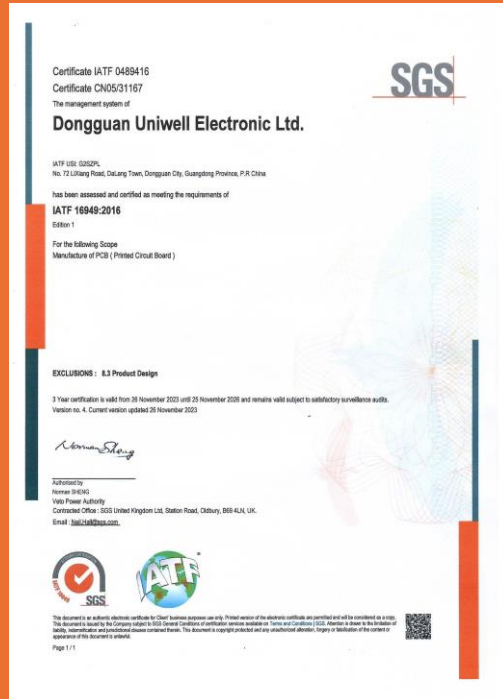


Auto Inkjet Printing

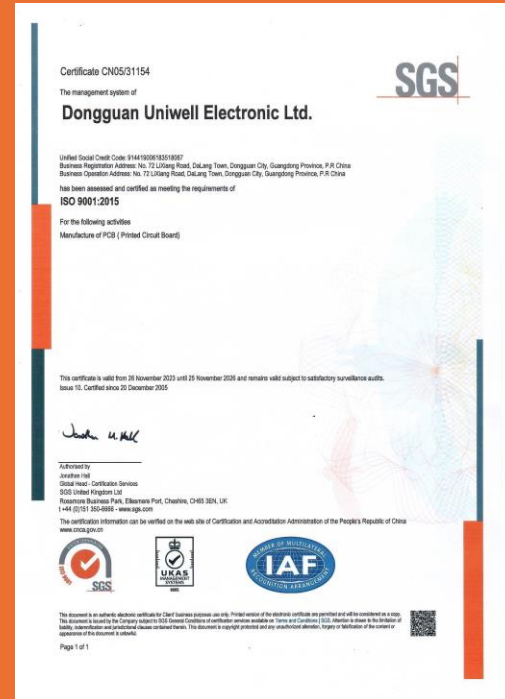


Auto Unloading

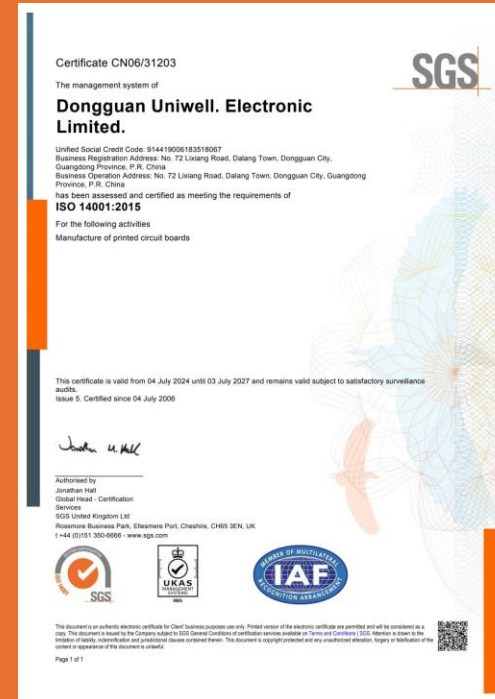
Quality & Certifications



IATF 16949:2016
Quality Management System



ISO 9001:2015
Quality Management System



ISO 14001:2015
Environmental Management System




CQC Certificate

Quality & Certifications

2023/2/4

ZPMV2.E134826 - Wiring, Printed - Component | UL Product iQ

UL Product iQ®



ZPMV2.E134826 - Wiring, Printed - Component

Wiring, Printed - Component

E13482

UNIWEILL ELECTRONIC LTD

Unit E, 8th Fl
World Tech Centre
95 How Ming St
Kwun Tong
Kowloon, Hong Kong

Type	Cond Width			Cond Thk	SS/DSO	Area Diam	Max Date After	Report 2022-01-01	Surface Mount	Assembly Solder		Solder		Max Oper		Meets UL796	C
	Min mm	Edge mm	mm							Process Temp °C	Process Cycles	Limits °C	sec	Temp °C	Flame Class		
Multilayer printed wiring boards																	
U-2M	0.11	0.17	17 Int:34	DS	25.4	No	-	-	-	-	260	10	130	V-0	All	*	
U-DHM	0.12	0.15	17 Int:102	DS	50.8	No	-	-	-	-	288	20	130	V-0	All	4	
U-HM	0.08	0.08	17 Int:102	DS	76.2	No	-	-	-	-	288	20	130	V-0	All	*	
U-M	0.11	0.17	17 Int:34	DS	25.4	No	-	-	-	-	260	10	130	V-0	All	*	
Single Layer Metal Base printed wiring boards																	
U-L	0.15	0.19	34	SS	76.2	No	-	-	-	-	288	10	90	V-0	All	-	
U-L1 (ASP 1)	0.14	0.155	17	SS	50.8	Yes	Yes	260	2	-	-	140	V-0	All	0		
Single layer printed wiring boards																	
U-01	0.18	0.18	34	SS	23.5	No	-	-	-	-	260	15	105	HB	All	*	
U-02	0.18	0.18	34	SS	23.5	No	-	-	-	-	260	10	105	HB	▲	*	

U-03	0.28	0.76	34	DS	25.4	No	-	-	-	-	260	10	130	HB	▲	*
U-03A	0.28	0.76	34	DS	25.4	No	-	-	-	-	260	10	105	HB	All	*
U-04	0.1	0.3	34	SS	25.4	No	-	-	-	-	260	10	105	V-0	All	*
U-06	0.3	0.73	34	DS	12.7	No	-	-	-	-	265	15	105	V-0	All	*
U-06A	0.3	0.73	34	DS	12.7	No	-	-	-	-	260	15	105	V-0	All	*
U-08	0.13	0.48	34	SS	25.4	No	-	-	-	-	260	10	130	V-0	▲	*
U-08A	0.18	0.25	34	DS	51.2	No	-	-	-	-	260	10	105	V-0	All	*
U-09	0.25	0.76	34	DS	25.4	No	-	-	-	-	274	20	130	V-0	All	*
U-09A	0.25	0.76	34	DS	25.4	No	-	-	-	-	260	10	130	V-0	All	*
U-10	0.25	0.76	34	DS	25.4	No	-	-	-	-	260	20	130	V-0	All	*
U-13	0.2	0.3	17	DS	25.4	No	-	-	-	-	288	20	130	V-0	All	*
U-D	0.2	0.3	17	DS	25.4	No	-	-	-	-	260	10	130	V-0	All	*
U-D1 (ASP 1)	0.12	0.12	17	DS	50.8	Yes	Yes	245	2	-	-	130	V-0	All	*	
U-DH	0.25	0.75	17 Int:0	DS	25.4	No	-	-	-	-	260	10	130	V-0	All	3
U-DT	0.07	0.25	17	DS	76.2	No	-	-	-	-	288	20	120	V-0	All	*
X-11	0.18	0.18	34	SS	23.5	No	-	-	-	-	260	10	105	HB	All	*
Single layer printed wiring boards, flammability only Recognition																
U-08B	-	-	-	DS	-	No	-	-	-	-	260	10	-	V-0	-	-

UL
Underwriters Laboratories



N. America

Europe

Asia

N. Africa

S. America

S. Africa

Global Market

Our technology, quality and global thinking
bring our products to the global market

- N. America
- S. America
- Europe
- N. Africa
- S. Africa
- Asia

Our Collaborations with Domestic and Global Customers

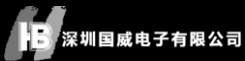
Mainland Customers



TOP-TEK



TRIDONIC



HeT 和而泰



vtech

Overseas Customers



TRIDONIC

vtech



xylem
Let's Solve Water



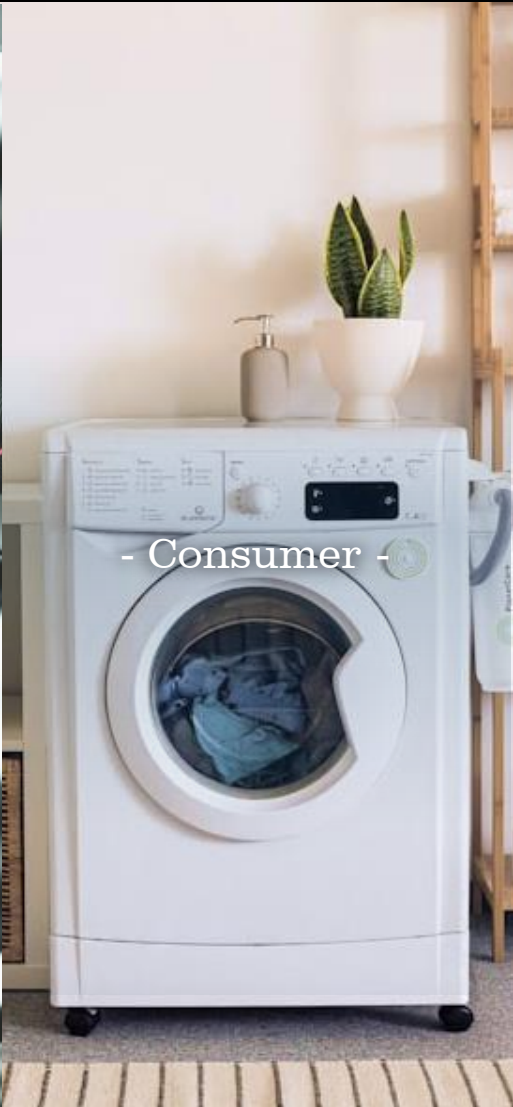
NPE



Customers of Different Markets



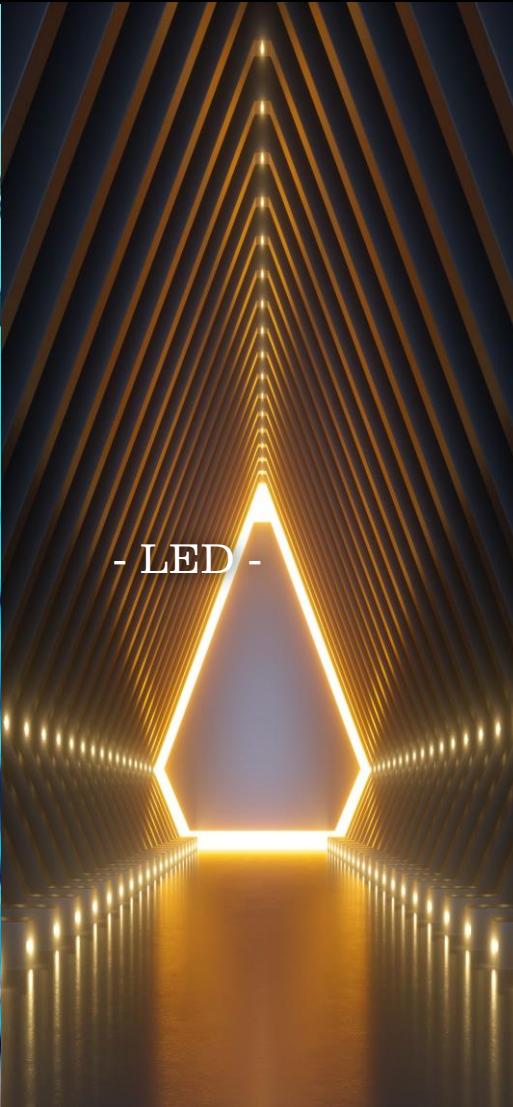
- Automotive -



- Consumer -



- Industrial -



- LED -



- Telecommunication -

Approved Materials

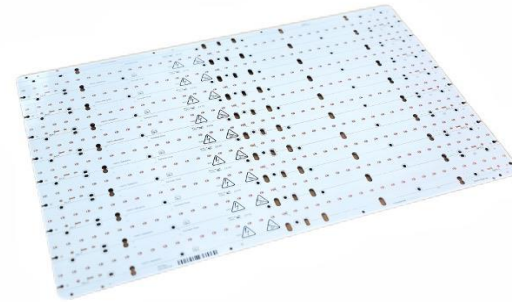
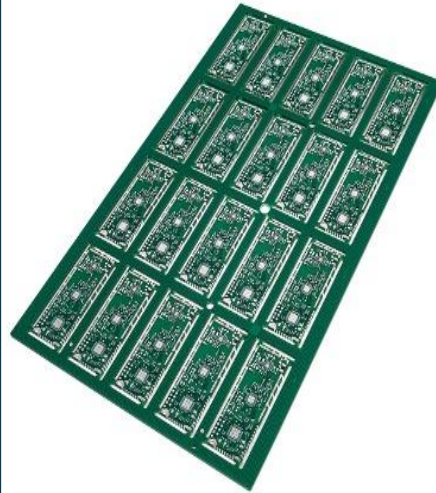
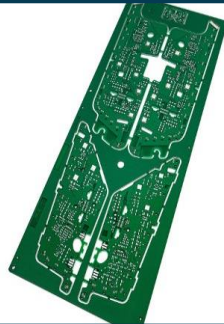
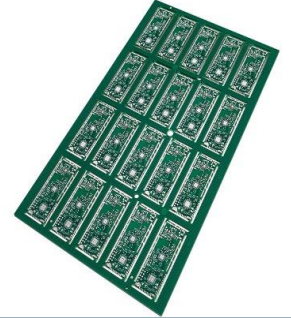


Target Focus

Quality, pricing, and service are the core strengths that set us apart. These three important pillars remain the foundation for our success and drive growth of our diverse customer base.

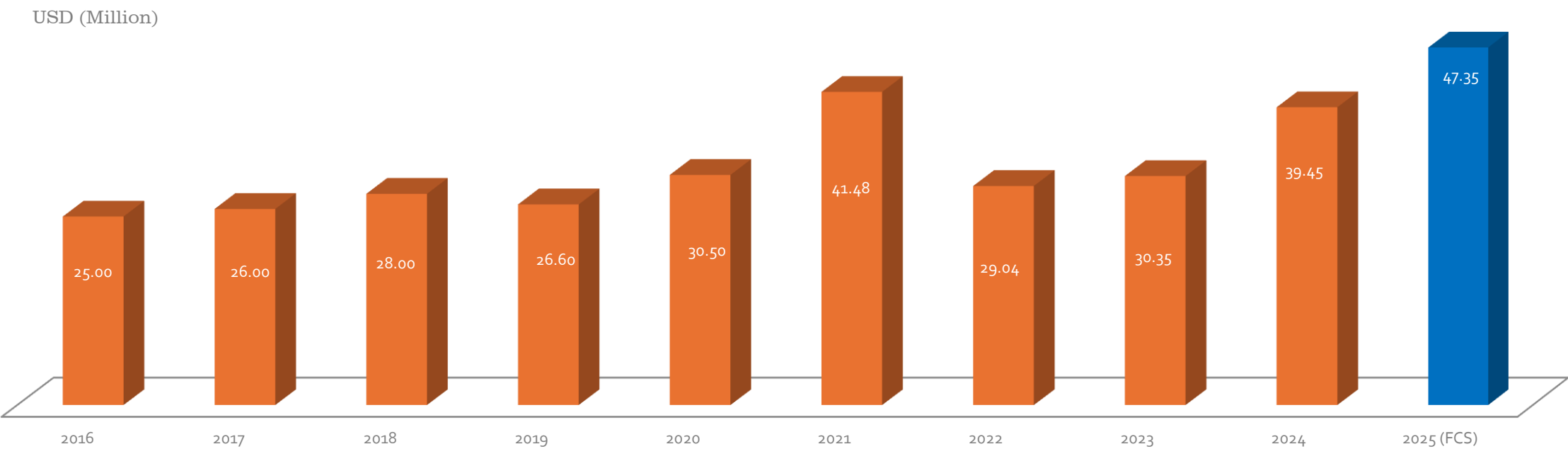


Our PCBs



Sales Performance

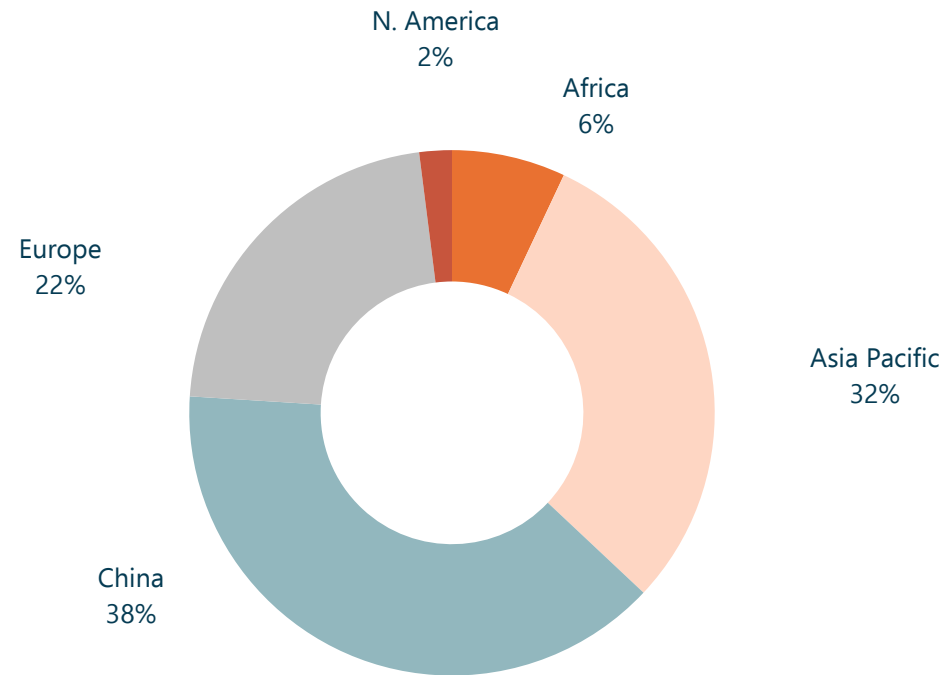
SALES TURNOVER IN MILLIONS (USD)



Source: Uniwell internal data 2024

Sales Performance

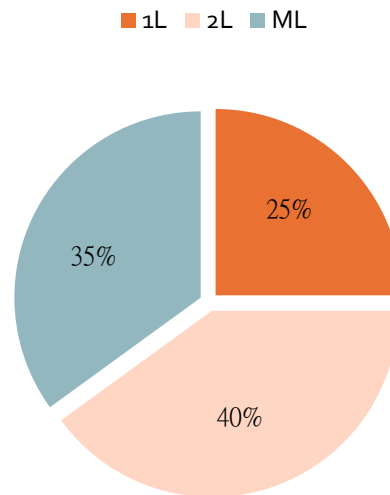
SALES BY REGION IN 2024



Source: Uniwell internal data 2024

Sales Performance

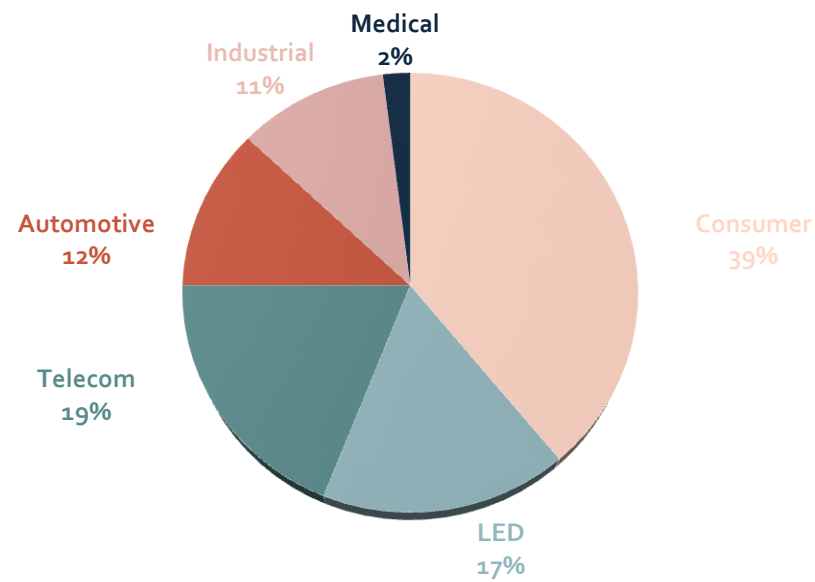
SALES BY LAYER COUNT IN 2024



Source: Uniwell internal data 2024

Sales Performance

SALES BY CATEGORY IN 2024



Source: Uniwell internal data 2024

Delivery Term

Incoterms



DAP Plant:
PRC (Mainland China)



FOB(Sea) , FCA(Air) : Hong
Kong & Shenzhen

Sample Production Lead Time

PCB type	Working days
SS	4
DS	6
ML	8-10
AL	10-14

Mass Production Lead Time

PCB type	Working days
SS, DS, ML, AL	7-30



Your Reliable PCB Partner



Thank you

For more information, please contact:

Uniwell Electronic Ltd.

Website: www.uniwellgroup.com
Email: info@uniwellgroup.com

Hong Kong Head Office

Unit D, 8/F,
World Tech Centre,
No. 95 How Ming Street,
Kwun Tong, Kowloon, Hong Kong

Tel: (+852) 2897 8630
Fax: (+852) 2897 2914

Dongguan Plant

No.72 Li Xiang Road,
Song Mu Shan,
Da Lang Town, Dong Guan,
Guang Dong Province, P.R.C.

Tel: (+86) 769 8331 8960