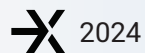


# Network Security, Swiss-made.

exeon

Smart Cyber Security.



# ABOUT EXEON ANALYTICS

e x e o n

Smart Cyber Security.

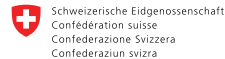
## Network security and cybersecurity for enterprises, Swiss-made.

We protect enterprise networks by providing the most future-proof Network Detection and Response solution against cyber attacks.



Management of Exeon, f.l.t.r. Gregor Erismann (CCO), Carola Hug (COO) and Dr. sc. David Gugelmann (CEO). Missing: CTO Dr. sc. Markus Happe

### OUR CLIENTS



### MEMBERSHIPS



# OUR SOLUTION

e x e o n

Smart Cyber Security.

1

## WHAT IS NETWORK DETECTION & RESPONSE?

Network Detection & Response (NDR) has quickly established itself as the leading method for identifying hackers in networks at an early stage, before they cause any damage. As a result, Network Detection & Response is becoming an increasingly central pillar of a modern cybersecurity architecture.

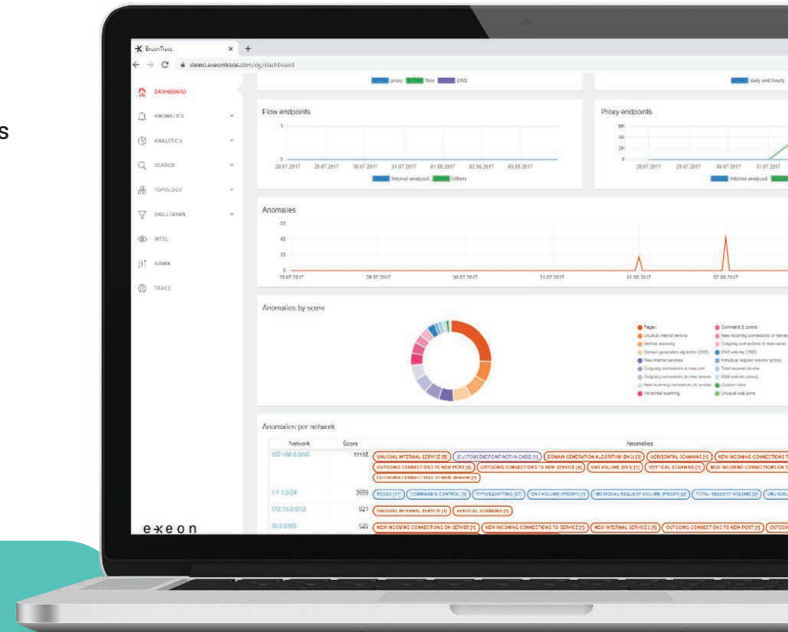
2

## WHY NETWORK DETECTION & RESPONSE?

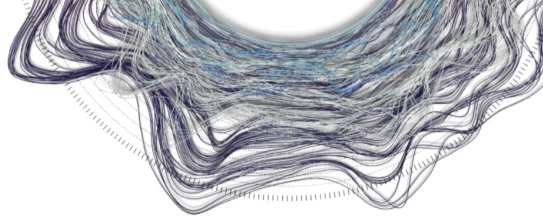
NDR solutions support rapid investigation, internal visibility, intelligent response, and enhanced threat detection across on-premises, cloud, and hybrid environments. Detecting attacks at the network layer works so well because it is extremely difficult for threat actors to hide their activities.

Our Network Detection and Reponse (NDR) platform, ExeonTrace, provides a future-proof way to monitor the security of your networks, to detect cyber threats immediately and to protect digital resources effectively.

Fast, reliable and automated.



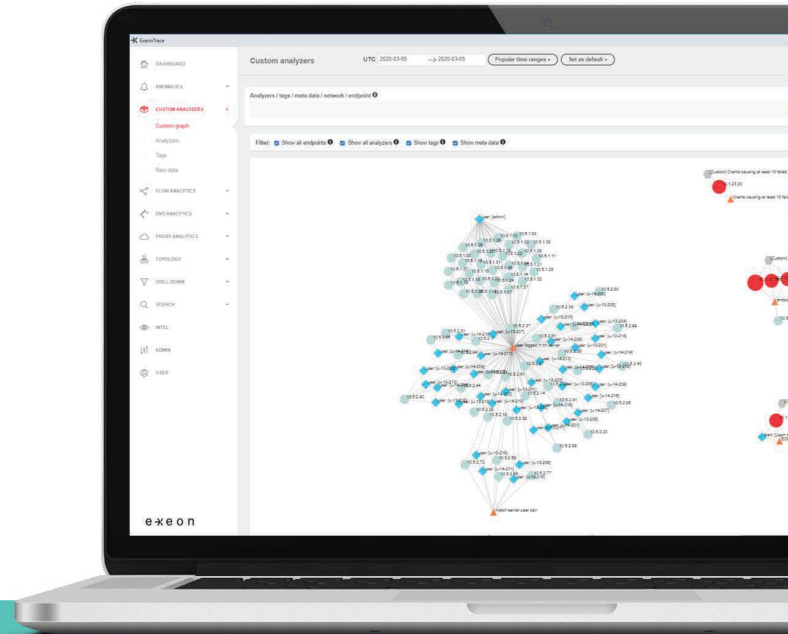
# MAIN BENEFITS



exeon

Smart Cyber Security.

- ✓ **Quick set up**  
Ready within hours. No sensors or agents needed
- ✓ **Complete visibility**  
Unified view of distributed networks, endpoints and applications
- ✓ **Reliable detection**  
Powerful AI and proven algorithms
- ✓ **Future-proof**  
Designed for increasing traffic and encryption
- ✓ **Efficient response**  
Rapid assessment, investigation, and response
- ✓ **Intelligent data handling**  
Minimal storage requirements with full data control



## FURTHER ADVANTAGES & BENEFITS.

Advanced security for businesses –  
see how it works for you

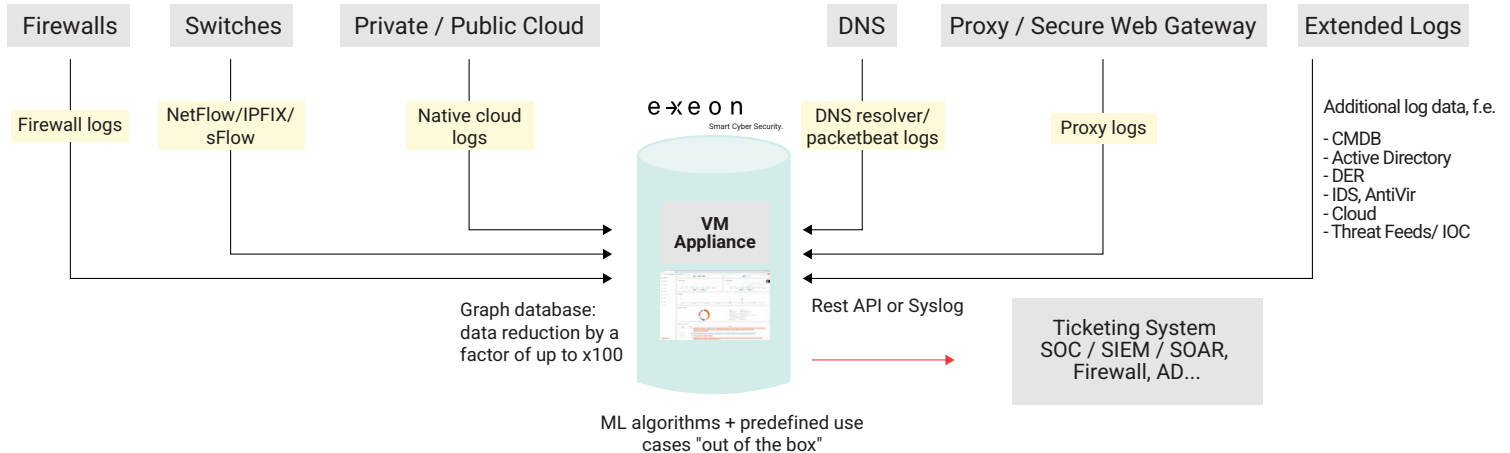


# EXEON AT A GLANCE

e x e o n

Smart Cyber Security.

Network visibility, monitoring & anomaly detection using flow/log data and AI



## Visibility

Intuitive GUI, dedicated visualizations for IT/OT network traffic, fast and interactive drill-downs

## Detection

Supervised and unsupervised ML models, predefined use cases, threat correlation, additional integrable logs

## Analysis & Defense

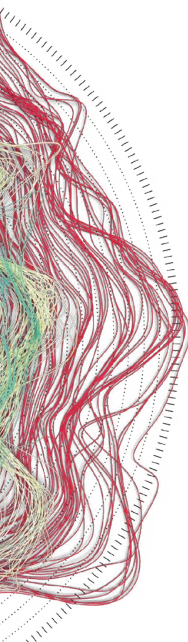
Graphical representation of security incidents, prioritization of incidents, API for triggering alerts and reactions

# THE BEST OF BOTH WORLDS

exeon

Smart Cyber Security.

Network Detection & Response (NDR) combined with lightweight log data from a SIEM



	Traditional NDR solution	ExeonTrace	SIEM
Datenquellen	Complex mirroring of network data	Lightweight log data	
Datenanalyse	Specialized Detection Algorithms for Network Protocol Data		Manual data analysis
Visualization of data	Intuitive Data Visualization		No data visualization
Storing Log Data	Limited long-term storage functionalities	Significant data reduction* Log data x100 Raw data x10'000	Expensive due to the volume of data
Threat Detection	Rely exclusively on network traffic	Holistic discovery across multiple data sources (inkl. Systeme und Anwendungsprotokolle)	

\*\* depending on the traffic matrix

**Traditional NDRs**, that monitor traffic cannot analyze encrypted payload data and are therefore **blind**.

**ExeonTrace** has special algorithms for analyzing encrypted communications using meta-log data and uses application protocols that provide information about encrypted traffic.

# WHAT OUR CUSTOMERS SAY

e x e o n

Smart Cyber Security.



## PLANZER

### Nils Planzer, CEO

As the CEO and owner of a tightly timed logistics company, I can't afford system failures due to cyber incidents. With ExeonTrace, we at Planzer have found a Swiss solution to monitor our network and detect cyber threats at an early stage.



## + SWISS

### Chris Keller, CISO

As the Swiss national airline, we are driven by our passion for exceptional performance in line with our guiding principles. Stable and secure IT is the most important basis for excellent customer service. For the security of SWISS IT, we use Exeon as a central cybersecurity tool, which is fully managed by our long-standing partner Reist Telecom AG. A perfect combination and solution to monitor our network and quickly detect anomalies.



solothurner  
spitäler

### Patrick Käppeli, Network and Security Engineer

Exeon is our cybersecurity alert system that alerts us to network anomalies. We were impressed by the platform's intuitive user interface – a tool that reliably monitors and secures our data and network.

### Head of IT Security

PostFinance

We chose ExeonTrace because of its open and future-proof architecture. Thanks to the ability to dispense with hardware sensors and control over the data flows, we didn't have to make any major changes to the existing infrastructure. The cooperation with the competent, technically advanced Exeon employees was convincing.

# Data protection and network security – with Exeon.

e x e o n

Smart Cyber Security.

Questions? Please contact us.

**Exeon Analytics AG:**  
Grubenstrasse 12  
8045 Zürich  
Switzerland  
+41 44 500 77 21  
[contact@exeon.com](mailto:contact@exeon.com)  
<https://exeon.com>



Follow us:

