



ON DUTY

VANEDA[®]



VANEDA is a Turkish brand grounded in İstanbul in 2004 and maintaining mass production making over 500.000 pairs of boots and shoes per year at its new 5000 m² factory. With a commitment to innovative technology, quality design, maximum comfort and consistent support of Fatih Ökçe who is a leading company with 46 years of experience in shoe-making industry, Vaneda Ayakkabı San. Ve Tic. A.Ş. has become a dynamic footwear expert company providing excellence in product quality and performance.

With the significance placed on product quality and customer satisfaction Vaneda Ayakkabı San. Ve Tic. A.Ş. Is engaged in the manufacturing of absolutely waterproof, **never getting heavier footwear** for a reasonable price using the world's most advanced materials and high-tech machines.

In a very short period of time our company successfully implemented and certified quality management system for compliance with the requirements of **ISO 9001: 2008** Quality Management System, **Ohsas 18001** Occupational Health and Safety Management Systems and **ISO 14001** Enviroment Management System to adhere to modern quality standards.

As a product quality is our top priority, the company products and raw materials are fully tested in compliance with ISO 9001:2008 system and TSE criteria.

Ümral ORAL
Member of the board of directors

OUR MISSION

to be a leading and reliable company in the footwear industry aiming at customer satisfaction, our employees and shareholders' appreciation and long-term benefit to the human environment;

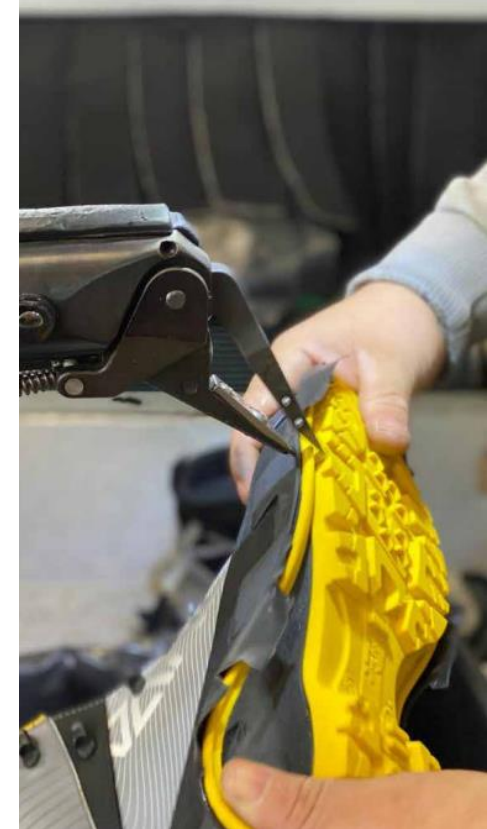
to sustain the success, achieved in the domestic and international sector.

OUR VISION

to be a pioneer company with an innovative approach focusing on long-lasting customer relationships in Turkey and abroad improving product quality in shoe-making industry.

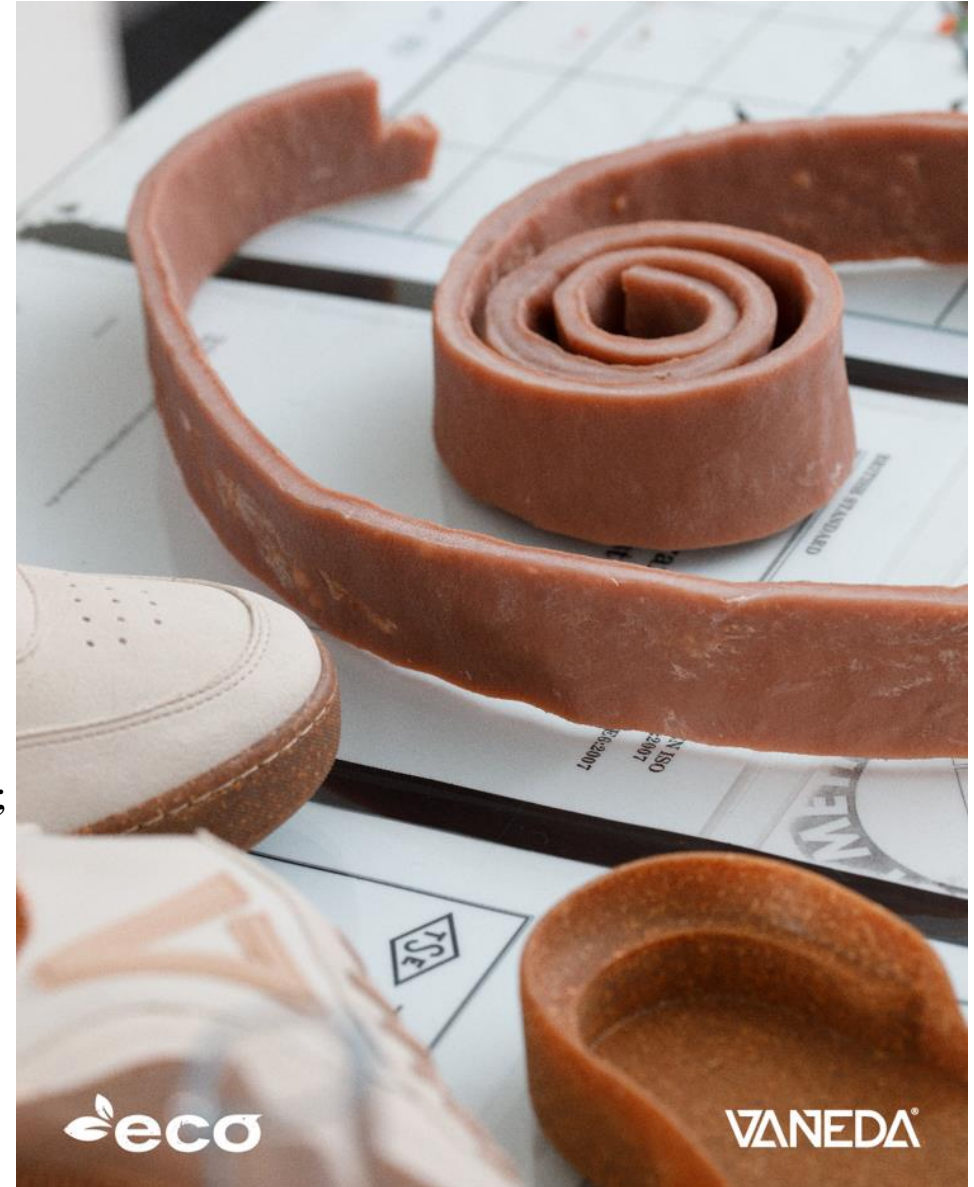
OBJECTIVE

to successfully operate in the market by expanding footwear production in compliance with the customer requirements based on the different geographical features and challenging weather conditions.



QUALITY POLICY

- ❖ to provide quality service to customers;
- ❖ to work in compliance with the Quality Management System;
- ❖ to comply with the rules of ethics in all its activities and to be honest;
- ❖ to ensure sustainable customer satisfaction;
- ❖ to continuously develop the system with the participation of all employees;
- ❖ to be the first innovator in footwear industry.





V-Clutch
SWEL*ET



VANEDA®

• DRYTEX

The membrane used in the DRYTEX waterproofing system is a semi-permeable PU-membrane and meets the water vapor permeability rate according to ISO 20344 norm.

Footwear with conventional BOOTI System waterproofing Technologies, in wet conditions have an average weight increase of 25%.

• SWEL*ET

Thermal insulation emerged from a successful R&D. It retains maximum air internally due to its ideal thickness and density. Produced by "non-woven" technology.

• V-Clutch

- With specially formulated density, it provides lightness and high cushioning comfort for your foot.
- This midsole divides the weight equally with its high sidewall design. In this way, it protects the foot better during long-term walking and climbing.
- Pu/Rubber double density injected sole provides high durability. Rubber outsole provides excellent grip in Rocky and rough terrain conditions.

DRYTEX



GRIP

INJECTION

DURABILITY

CENTRAL PATTERNS
SPECIAL PATTERN DESIGN FOR MULTIPLE SIDED GRIP

SIDE SOPE DESIGN FOR SELF CLEANING ON THOUGH TERRAIN CONDITIONS

SIDE PATTERNS
SPECIAL BLOCKED PATTERN DESIGN FOR MULTIPLE GRIP

SIDE SOPE DESIGN FOR SELF CLEANING ON THOUGH TERRAIN CONDITIONS

WIDE FLEXIBLE DRAIN
FLEXIBLE DRAINS FOR ADAPTATION TO TERRAIN AND FLEXIBILITY

RUBBER COMPOUND
DURABLE SLIP RESISTANT RUBBER PROVIDE BEST GRIP PERFORMANCE

COLD WEATHER OPERATION BOOTS

Never get heavier / Always dry inside

Operational boots are designed for the most challenging field conditions providing high mobility and foot protection from external factors. They are manufactured using the modern waterproof and breathable DRYTEX technology and SWELOFT lining material which withstands cold up to -25°C.

Leather and Cordura textile materials are highly resistant to wear and tear due to their water-repelling nature. Boots have maximum durable, lightweight, non-slip Rubber/PU injected soles with a pattern that ensures traction.

Special leather material, which withstands scoring and tear, is used on the toecap and heel counter.

Foot comfort is provided by the orthopedic Orthoflex inner sole.



ALL SEASON BOOTS

Never Cold / Always Warm

All season boots provide durable comfort to your feet. They are made using the revolutionary DryTex technology which is designed to protect against heat and moisture. Cordura textile material is highly resistant to wear and tear due to its water-repelling nature.

Non-slip Rubber/PU injected sole with maximum durability is used. Comfort to feet reaches maximum level with the orthopedic Orthoflex inner sole technology.



 V-Clutch **1191**



 V-Clutch **1192**

SUMMER BOOTS

Never Sweat / Always Cool

Summer boots with maximum breathability are lightweight, highly resistant to wear and tear and provide superior mobility.

TPU/PU injected sole technology stands out with maximum lightweight, flexibility and shock absorption. Orthopedic inner sole is antiperspirant and breathable.





SPORT SHOES

Move Fast / Always Flexible

The sports shoes are designed with lightness, flexibility and air permeability features on the front panel. Leather and Cordura textile materials are resistant to abrasion and tear due to their water-repelling nature.

Lightweight, dual colored Outsole by MICHELIN is used. Comfort of feet is maximized with the orthopedic Orthoflex inner sole technology.

REFERENCES

- ❖ Turkish Defense Ministry
- ❖ Turkish Air Force
- ❖ Turkish Land Forces
- ❖ Turkish Naval Forces
- ❖ Gendarmerie General Command
- ❖ General Directorate of Security
- ❖ Turkish Police Special Operation Team
- ❖ Somali National Army
- ❖ Zambian Army
- ❖ Kyrgyzstan Army

