

echeuch
LIGNO

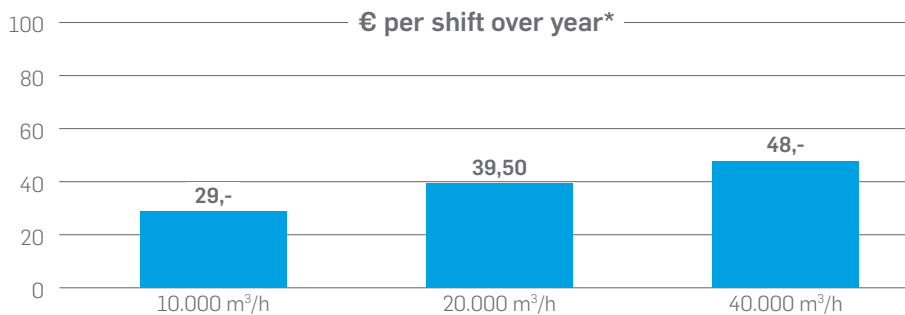
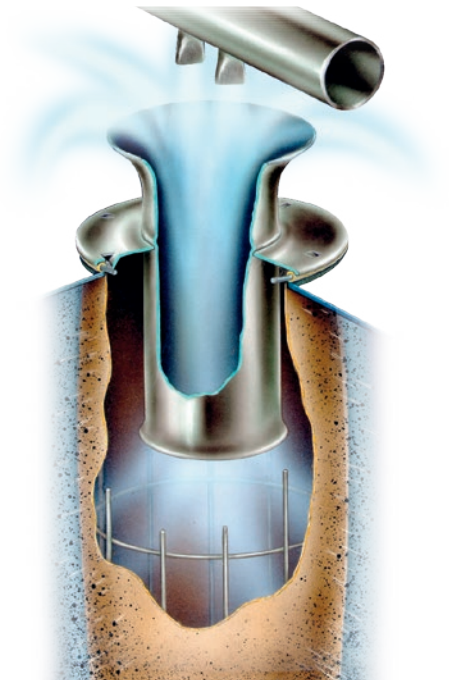
LIGNO COMPACT-FILTER

UNIVERSAL AND ENERGY SAVING

IMPULS CLEANING

EFFICIENT & OPERATIONALLY SAFE

The IMPULS cleaning system developed by Scheuch is highly efficient and energy-saving. With a high proportion of secondary air, the specially shaped twin jets ensure efficient and extremely gentle cleaning. This results in low compressed air consumption and longer cleaning cycles, which in turn means that the bags last longer.



* for 1920 h/year, 12 euro cents/KWh

ENERGY REQUIREMENT – PATENTED FILTER CLEANING

The Scheuch LIGNO injector assures reliable cleaning and low energy costs.

LOW OPERATING COST

LONG SERVICE LIFE

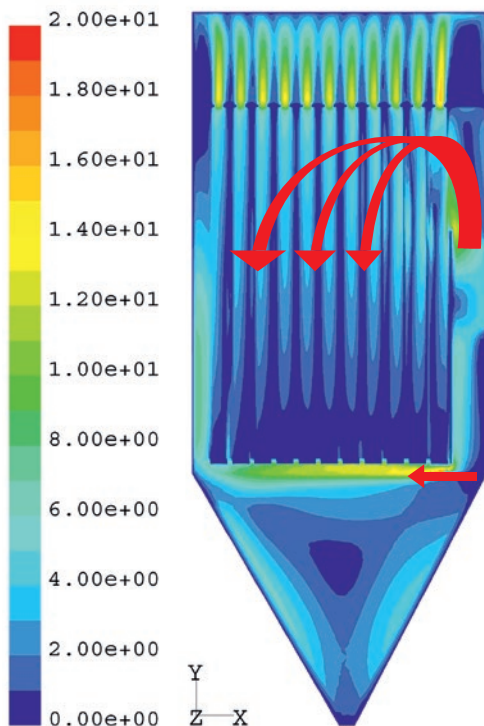


Fig.: CFD simulation for representing the optimised crude gas inlet

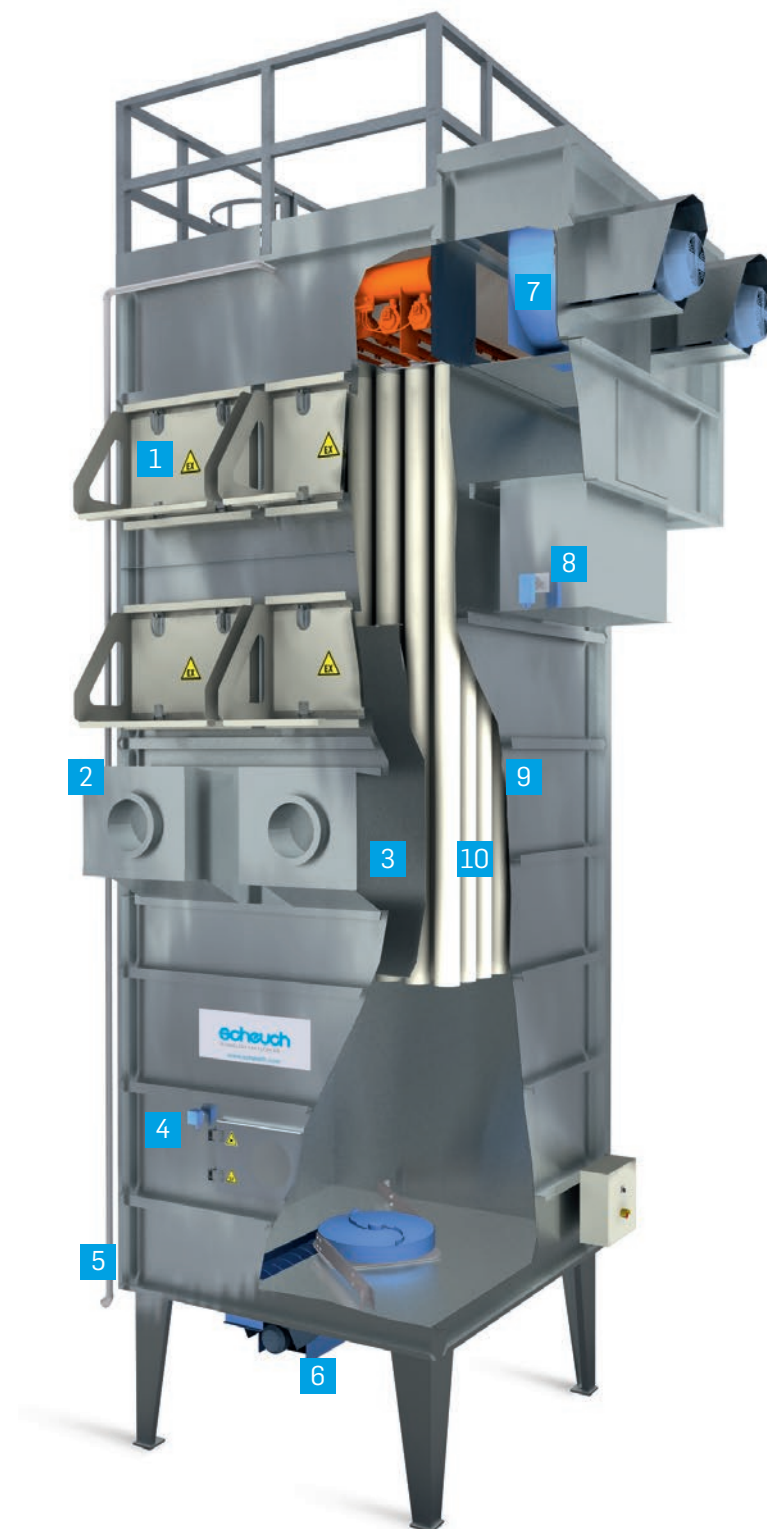
In addition to efficient cleaning, the pressure loss in the filter system itself and the filter bag is especially crucial to the operating cost. With the development of the series, the filter casing has been flow-optimised using CFD simulations.

The Scheuch LIGNO-01 filter bag guarantees a very low filter resistance over a long lifetime as a result of the surface-oriented filtration behaviour of the dust penetration being so low and so maintaining the air permeability.

The baffle plates in the crude gas inlet ensure pre separation of the volume primarily made up of chippings and dust residue and generate a cross-flow through the dust collection container. The swirling up of previously separated chippings and dust is thereby prevented. The TOP-DOWN effect supports the downward movement of the cleaned dust particles for discharge.

LIGNO COMPACT-FILTER

SOLID AND SOPHISTICATED CONSTRUCTION



- 1 Minimal flame size due to tested Scheuch relief flap
- 2 Crude gas inlet with tested Scheuch non-return flap
- 3 Efficient preseparation and optimum gas flow management via baffle plates
- 4 Monitoring of material discharge via level monitor
- 5 Quick and safe fire fighting through the dry extinguishing pipe
- 6 Material discharge through the tested Scheuch rotary valves
- 7 Optimised inflow and jet geometry of the integrated fans
- 8 Monitoring of the residual dust content in the clean-gas channel
- 9 No deposits thanks to the smooth interior surfaces and large bag spacings
- 10 LIGNO-01 filter bag for residual dust content $< 0.1 \text{ mg/Nm}^3$



UNIVERSAL USE

FOR ALL REQUIREMENTS



Bunker



Trough



Hopper



Conveying system

echeuch
LIGNO



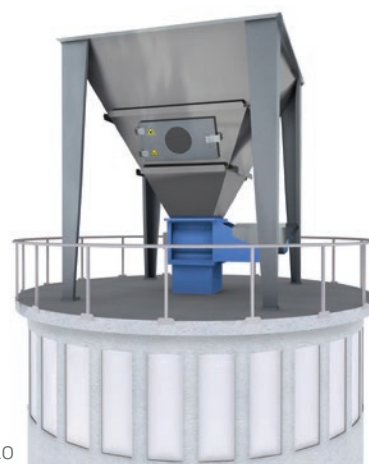
Dust can



Container



Briquetter



Silo



EXPERTISE FROM A SINGLE SOURCE

FOR INDUSTRY & TRADE

Emanating from the high industrial standards set by LIGNO industrial filter plants, we are offering the LIGNO compact filters for the performance range between 6000 and 40,000 m³/h. Our skill sets in filtration and dedusting technology come into their own here.

ENERGY EFFICIENT

The Scheuch LIGNO IMPULS cleaning system must be considered both in terms of energy efficiency as well as operational safety. In order to minimise operating costs for an extraction and dedusting system, the correct choice of system design as well as optimal sizing and planning of the pipework is decisive. The interaction of efficient individual components and an effective system design leverages the best solution – both technically and economically.

TESTED FIRE AND EXPLOSION PROTECTION CONCEPT

The certified Scheuch LIGNO safety concepts guarantee availability and legal compliance for the operator. They can also help to reduce insurance premiums. Conventional fire and explosion protection measures require large safety clearances, which are often not available in practice. Scheuch has therefore developed and tested customer-specific solutions according to the installation location in question. For example, Scheuch LIGNO can provide explosion protection concepts with flame ranges of under three metres if necessary. This makes it possible to adapt a filter erection to particular requirements, even when space is extremely limited. The certified, ATEX-compliant design is complemented by a report describing the limited impact on the rest of the hazard zone. Vehicle routes, walkways, storage areas and site boundaries are permitted within the vicinity of the filtration plant. The filter casings and separation distances have been tested in accordance with fire protection class EW90. A distance of one metre between the filter and the building is sufficient. This ensures maximum safety with minimum restrictions.

UNIVERSAL USE

The finely stepped series and flexible modular system satisfies all demands, in terms of construction size, height and shape, with a range of different discharge versions already incorporated into the standard range and hence good value without additional time invested.

QUIET PERFORMANCE – INDIVIDUALLY ADAPTED

Various standardised sound damping measures are available depending on installation in industrial estates, in mixed construction areas or even for night operation in terms of sound damping.

APPLICATION

The LIGNO compact filter range has been specially developed for the wood processing industry and the wood processing trade. It is also suitable for the separation of similar dusts such as that of paper, rubber, recycling or plastic materials.

Scheuch LIGNO GmbH
Mehrnbach 116
4941 Mehrnbach
Austria

Phone +43 / 7752 / 905 – 8000
Fax +43 / 7752 / 905 – 68000
E-Mail office@scheuch-ligno.com
Web www.scheuch-ligno.com

WE ARE
TECHNOLOGY
FOR CLEAN AIR

