



犬ロケア

KENKO CARE
Oral Care goods for dogs



Puppy Starter Kit

Made in JAPAN

This kit is perfect to start when first introducing your pet to the tooth brushing experience and getting used to it as a dental health habit, tooth-brushing is relatively easy if you start from puppy.

- Kit included : Tooth-brushing liquid (milk flavor), Finger toothbrush, Toothbrush Micro Head



Cylinder Set (Regular / Slim)

Made in JAPAN

The ideal timing to introduce to the habit of pet toothbrushing is when they are still puppy. Unfortunately most of the people didn't realize and start when they already grown till adult dog. Therefore, we create this bundle set that include toothbrushing liquid, finger toothbrush and cylinder head type of toothbrush that is relatively easy to use from all angle. Use this bundle set to start the habit of tooth brushing for your dog. Hoping that your dog can enjoy their food with their healthy teeth forever.

- Set included : Toothbrushing liquid (milk flavor), Finger toothbrush, Toothbrush Cylinder Head (Regular / Slim)



Regular



Slim



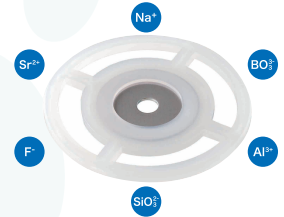
Multiple Ions releasing plate

Made in JAPAN

When the "Multiple Ions Releasing Plate" immersed in drinking water, six types of ions (Sodium Ion, Borate Ion, Aluminum Ion, Silicate Ion, Fluoride Ion, and Strontium Ion) are released from the PRG filler into the water without interfering each other. These ions are released into the water without interfering with each other and drinking the water will keep your dog's mouth healthy. The ion effect also helps prevent slime spawn in the drinking bowl.

PRG filler is a bioactive functional glass that can release six types of ions including fluorine. In the field of dentistry, it is applied to various dental materials such as dental fillers, coatings and sealants.

- How to use : Fill the water container with water for your dog and leave this plate to immerse. Change the water once a day is recommended.
- Material: Polypropylene "FDA 21 CFR 177.1520 © 1.1a" compliant, Stainless steel (SUS304), PRG filler.
- Size : Ø60.0 X 3(mm) ● Weight : 9.5 (g)



Toothbrushing Liquid

Made in JAPAN

The toothbrushing liquid is formulated with milk flavored. Apply 2 to 3 drops to a toothbrush or finger toothbrush and let them lick. Start brushing their teeth, and they will gradually become accustomed to the toothbrushing habit and let you brush their teeth. Instead of Xylitol, Sorbitol is used, which is an ingredient derived from apple nectar. Brush with no worries, as this product is alcohol-free.

- Volume : 30(mL) ● Ingredients : Water, Sorbitol, Glycerin, Hydroxypropyl methylcellulose, Dipotassium glycyrrhizate, PEG-60 Hydrogenated castor oil, Hakka yu(JTN) , Sapindus trifoliatus fruit extract, PCA ethyl cocoyl arginate, Silver, Acetic acid, Phytic acid, Sodium bicarbonate, Flaver, Sodium benzoate, Caramel, Glucosyl hesperidin ● Material : Bottle and Nozzle - PE, Cap - PP



Toothpaste

Made in JAPAN

Formulated with abrasive agent that helps to shorten the toothbrushing time yet effectively remove any debris on the teeth. Contains Organically Grown Sapindus Trifoliatus Fruit Extract and its abrasive agent using Hydroxyapatite (component derived from teeth & bone). Brush confidently with our alcohol-free toothpaste. Alternatively choose our toothbrushing liquid if you prefer abrasive-free product.

- Volume : 60(g) ● Ingredients : Water, Sorbitol, Glycerin, Hydroxyapatite, Xanthan gum, PEG-60 Hydrogenated Castor oil, Magnesium Oxide, Sodium Benzoate, Dipotassium Glycyrrhizate, Citric acid, Sapindus trifoliatus Fruit extract, Hakka yu(JTN), Silver, Acetic acid, Phytic Acid, Sodium Bicarbonate, Flaver ● Material : Tube - PE and EVOH, Cap - PP

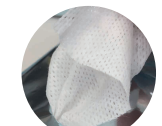


Dental Wipes

Made in JAPAN

KENKO CARE Dental Wipes is an alcohol free type of toothbrushing wipes. With added Green Tea Extract formula, with a hint of milk flavors which most of pet dog loves. Also mesh type of toothbrushing sheets cleans teeth better also helps to remove any dirt on the teeth.

- Material : Non-woven fabric ● Wipes Size : 150 X 200 (mm) ● Content 30 sheets ● Ingredients : Water, Butylene Glycol, Dipropylene Glycol, PEG-60 Hydrogenate Castor Oil, Cetylpyridinium Chloride, Methylparaben, Propylparaben, Glycerin, Trehalose, Dipotassium Glycyrrhizate, Potassium Acesulfame, Sucralose, Sorbitol, Sodium Citrate, Citric Acid, Tricalcium Phosphate, Camellia Sinensis Leaf Extract, Fragrance



Mesh type





Finger Toothbrush

Made in JAPAN

Finger toothbrush allows you to brush their teeth with your thumb and index finger at the same time. By rubbing the front and back surfaces of the teeth between the thumb and index finger, both sides of the teeth can be brushed at the same time.

A finger toothbrush is an alternative option for those who are not good at using a regular toothbrush. This product can be worn with both right and left hands, and both hands can brush teeth at the same time. For owners with large hands, a large size is also available.

- Material : Whole - Cotton / Nylon, Rubber Division - Polyurethane
- Size Regular : 130X80(mm) Large : 150X100(mm) ● Washable (approx. 30 times)

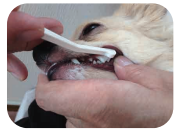


Toothbrush Micro Head

Made in JAPAN

Specially designed pet toothbrush (mini sized bristle) targeted for ultra-small breed dog (weight below 2.5kg) for daily brushing habit. 10mm thickness of the brush bristles to accommodate a smaller mouth to allow for easy applications and cleans the inner part of tooth around the cheek side. 15-degree angle bend specially designed to fit your dog's mouth shape for a better brushing handling and remove plaque and food debris effectively.

- Material : Handle - ABS resins, Brush - Nylon
- Size : 150X15(mm) ● Weight : 5.0(g)



Toothbrush Small Head

Made in JAPAN

Specially designed pet toothbrush targeted for medium-size breed dogs. 15-degree angle bend specially designed to fit your dog's mouth shape for a better brushing handling and remove plaque and food debris effectively.

- Material : Handle - ABS resins, Brush - Nylon
- Size : 150X15.5(mm) ● Weight : 4.5(g)

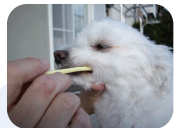


Soft Toothbrush Small Head

Made in JAPAN

Soft bristles brushing is essential especially for dogs which suffering from periodontal diseases. Massage the gum gently using the soft bristle promote better comfort and acceptance. Recommended for small to medium sized dogs as well as a starter toothbrush for beginner too.

- Material : Handle - ABS resins, Brush - Nylon
- Size : 150X15.5(mm) ● Weight : 4.5(g)



Toothbrush Large Head

Made in JAPAN

Specially designed pet toothbrush targeted for medium to large-size breed dogs. 15-degree angle bend specially designed to fit your dog's mouth shape for a better brushing handling and remove plaque and food debris effectively.

- Material : Handle - ABS resins, Brush - Nylon
- Size : 180X15.5(mm) ● Weight : 7.0(g)

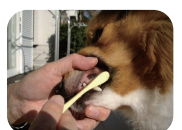


Soft Toothbrush Large Head

Made in JAPAN

Soft bristles brushing is essential especially for dogs which suffering from periodontal diseases. Massage the gum gently using the soft bristle promote better comfort and acceptance. Recommended for medium to large sized dogs as well as a starter toothbrush for beginner too.

- Material : Handle - ABS resins, Brush - Nylon
- Size : 180X15.5(mm) ● Weight : 7.0(g)



Cylinder Head Toothbrush Slim / Regular

Made in JAPAN

The cylindrical type of brush head is the perfect toothbrush for dogs who dislike toothbrushing or for those dog who are just starting to brush their teeth. The regular size brush head is about 14.5mm in diameter and the slim is about 11.0mm in diameter.

The cylindrical shape of the brush head allows the bristles to get contact to the teeth in any direction without adjusting the angle, making it easy to brush. The high density of the bristles allows dirt and debris to be absorbed by the bristles through capillary action.

- Material : Handle - Polypropylene, Brush - Nylon
- Size Slim : Φ11.0X155(mm) Regular : Φ14.5X155(mm)
- Weight Slim : 7.0(g) Regular : 7.0(g)



Toothbrush Detachable Round Head / Pointed Tuft

Made in JAPAN

"Round Head" is ideal toothbrush for you to carefully brushing your pet dog's intricately shaped teeth.

"Pointed Tuft" is effective for removing stains in the crevices of teeth and hard-to-brush areas that are often left unbrushed with a regular toothbrush.

The bristle head can be set on the handle from both directions, so it can be used at two different angles.

- One spare Brush
- Material : Handle - ABS resins, Brush - Nylon
- Size : 18X145X7(mm)
- Weight 4.0(g)



Round Head



Pointed Tuft

Tooth Cleaner

Made in JAPAN

Silicon rubber part contained abrasive for a better cleaning effect. Wipe off the saliva or moisture on the surface of the teeth and rub gently to remove stains. The cleaner can be set for either side. Insert and adjust firmly on desired position.

- One spare Cleaner
- Material : Handle - ABS resins, Cleaner - Silicone rubber(Content : MgO)
- Size : 18X145X7(mm)
- Weight : 4.0(g)

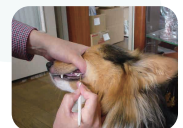


Pick & Pick

Made in JAPAN

Pick & Pick removes food debris and tartar on the teeth surface via dual-ended picks of different angle. For safety usage when using the product, start from the gum line between the teeth and gently pull the pick away from the gum line toward the tip of the tooth to remove food debris and dirt.

- Material : Handle - ABS resins, Protection tube - Silicone rubber, Pick - Titanium coating stainless steel(SUS304)
- Size : 15X160X7(mm)
- Weight : 5.0(g)



Scaler Sharp / Scaler Alpha

Made in JAPAN

Similar with "Sharp" type, that has a pointed tip, the "Alpha" has a thinner blade tip compared with "Sharp" Type.

The sharp tip removes tartar effectively from non-flat tooth surfaces and its interdental spaces.

The cutting edge of the tip is hand-crafted and edged carefully one by one by a blade craftsman.

Entirely Made of stainless steel and it can be autoclaved and sterilized by boiling water for hygienic purpose.

- Material : Edge - Stainless steel(SUS420J2), Handle - Stainless steel(SUS304)
- Size : 8X145X6(mm)
- Weight : 22.0(g)



Sharp



Alpha

Scaler Flat / Scaler Beta

Made in JAPAN

Similar with "Flat" type, that has a flatted tip, the "Beta" type has a narrower blade tip compared with "Flat" Type

The sharp tip removes tartar effectively from non-flat tooth surfaces and its interdental spaces.

The cutting edge of the tip is hand-crafted and edged carefully one by one by a blade craftsman.

Entirely Made of stainless steel and it can be autoclaved and sterilized by boiling water for hygienic purpose.

- Material : Edge - Stainless steel(SUS420J2), Handle - Stainless steel(SUS304)
- Size : 8X145X6(mm)
- Weight : 22.0(g)



Flat



Beta



Mouth Cleaning Water (Milk Flavor)

Made in JAPAN

Just mix with drinking water, and it will help to freshen their oral environment. Contains Sodium Polyphosphate that act to gather the calcium in saliva and help to reduce calcification of dental plaque.

To use, mix 1 stick (10mL) with 250 mL of drinking water.

- Contents : 20 sticks (10mL per stick)
- Ingredients : Water, Glycerin, PEG-50 Hydrogenated Castor Oil, Sodium Benzoate, Sodium Citrate, Citric Acid, Camellia Sinensis Leaf Extract, Butylene Glycol, Hydroxyethylcellulose, Dipotassium Glycyrrhizate, Sodium Polyphosphate, Zinc Gluconate, Flavor



Oral Health Powder (Milk Flavor)

Made in JAPAN

Traditional toothbrushing method will definitely clean your dog's teeth, additionally we invented another way to enhance their oral health with KENKO CARE Oral Health Powder.

This supplement product is produced not only for their oral health, also for their body health with added active *probiotic* ingredients, *lactosucrose* and *beet fibre*. Do consider with our KENKO CARE series of oral care products to care for your previous dog daily oral care.

- Ingredients : Reduced maltose starch syrup, Dextrin, Food product using dairy constituent for major ingredient, Beet Fibre, Lactosucrose, Lactic Acid Bacteria Powder, Glucose, Perilla Extract Powder, Flavoring, Tricalcium phosphate, Lactoferrin, pH adjuster, Glucose oxidase, Lactoperoxidase (Part of the ingredient contains dairy product, wheat and soy)
- Components : Crude Protein more than 2%, Crude Fibre less than 0.4%, Water moisture less than 2.8%, Crude Fat more than 0.1%, Crude ash content less than 1.9%
- Daily Feeding Guide : Dog's Weight 5kg or less: 1 stick Dog's Weight 5kg~10kg: 2 sticks Dog's Weight 10kg~20kg : 3 sticks Dog's Weight 20kg and above: 4 sticks
- Contents : 45g (1.5g x 30 sticks / box)



Oral Health Powder + Joint Care (Milk Flavor)

Made in JAPAN

Care not only for oral health, with enhancement ingredient of Probiotic, Joint support supplement of *Glucosamine*, *Fish Collagen*, *SNC-20N*, *Methyl Sulfonyl Methane* to maintain and provide joint supports for your loving pet.

- Ingredients : Reduced maltose starch syrup, Fish Collagen, Dextrin, Methyl Sulfonyl Methane, Food product using dairy constituent for major ingredient, Beet Fibre, Shark Cartilage Extract, Lactosucrose, Glucose, Pasteurized Probiotics, Powdered Perilla Extract / Glucosamine, Flavoring Agent, Silicon Dioxide (fine), Lactoferrin, pH adjuster, Glucose oxidase, Lactoperoxidase (Part of the ingredient contains dairy product, wheat and soy, crab, shrimp, gelatin)
- Components : Crude Protein more than 26.2%, Crude Fibre less than 0.7%, Water moisture less than 12.0%, Crude Fat more than 3.3%, Crude ash content less than 1.7%
- Daily Feeding Guide : Dog's Weight 5kg or less: 1 stick Dog's Weight 5kg~10kg: 2 sticks Dog's Weight 10kg~20kg : 3 sticks Dog's Weight 20kg and above: 4 sticks
- Contents : 45g (1.5g x 30 sticks / box)



Oral Health Powder + Eye Care (Milk Flavor)

Made in JAPAN

Care not only for oral health, with enhancement ingredient of Probiotic, eyes enhancement supplement of *AstaReal® Powder 20F*, *Lutein Hi-Fil08%*, *Acer Maximowiczianum Dried Extract*, *Purple Sweet Potato Powder* to maintain and support eyes health for your loving pet.

- Ingredients : Reduced maltose starch syrup, Dextrin, Sweet Potato Powder, Food product using dairy constituent for major ingredient, Beet Fibre, Lactosucrose, Marigold Extract, Glucose, Pasteurized Probiotics, Acer Maximowiczianum Extract, Powdered Perilla Extract / Flavoring, Tricalcium phosphate, Haematococcus alga coloring, Processed Starch, Gum Arabic, Lactoferrin, Antioxidant (V.E, V.C), pH adjuster, Silicon Dioxide (fine), Glycerin-fatty acid ester, CMC-Na, Glucose oxidase, Lactoperoxidase (Part of the ingredient contains dairy product, wheat and soy)
- Components : Crude Protein more than 1.6%, Crude Fibre less than 1.0%, Water moisture less than 2.7%, Crude Fat more than 4.6%, Crude ash content less than 1.9%
- Daily Feeding Guide : Dog's Weight 5kg or less: 1 stick Dog's Weight 5kg~10kg: 2 sticks Dog's Weight 10kg~20kg : 3 sticks Dog's Weight 20kg and above: 4 sticks
- Contents : 45g (1.5g x 30 sticks / box)



Oral Health Powder + Senior Health Care (Milk Flavor)

Made in JAPAN

In recent year, life span of our pet dog has become longer and we formulated the ingredients of oral health powder in order for them to maintain a healthy oral cavity as well as their joints, eyes, skin and brain to stay energetic and great condition.

- Ingredients : Maltitol, Dextrin, Fish Collagen Peptide, Methylsulfonylmethane, Modified Milk Powder, Beet Dietary Fiber, Purple Sweet Potato Powder, Zinc-containing Yeast, Shark Cartilage Extract Powder, DHA containing Refined Fish Oil Powder, Marigold Extract Powder, Glucose, Yeast (containing Biotin), Coenzyme Q10, Probiotic (sterilized), Milk Protein, Processed Oil Powder, Glucosamine, Tricalcium Phosphate, Vegetable Lecithin, Vitamin C, Haematococcus Algae Color, Arabic Gum, Processed Starch, Flavor, Sodium Citrate, Casein Sodium, Lactoferrin, Emulsifier, Vitamin E, Niacin, Antioxidant (V.E, V.C.), Pantothenic Acid Ca, pH Adjuster, Silicon Dioxide, Glucose Oxidase, Lactoperoxidase, Vitamin B1, CMC-Na, Glycerol Ester, Vitamin B6, Vitamin B2, Vitamin A, Folic Acid, Vitamin D, Vitamin B12 (Part of the ingredients contains milk, wheat, soybeans, shrimp, crab and gelatin)
- Components : Crude Protein more than 17.5%, Crude Fibre less than 0.1%, Water moisture less than 8.1%, Crude Fat more than 4.1%, Crude ash content less than 2.1%
- Daily Feeding Guide : Dog's Weight 5kg or less: 1 stick Dog's Weight 5kg~10kg: 2 sticks Dog's Weight 10kg~20kg : 3 sticks Dog's Weight 20kg and above: 4 sticks
- Contents : 45g (1.5g x 30 sticks / box)

