

www.mixitaly.com

TAILOR-MADE PROCESS TECHNOLOGY



*Specialists in mixing technology
and powder handling components*



More than 1500 active
mixers worldwide

Company extension
Surface: 22.000m²
Covered 12.000m²

80 employees

Sales
65% Export
35% Italy

>30 years'
experience
in the mixing
industry

>20 dealers around
the world close
to customers



REVENUE BY DIVISION

40%

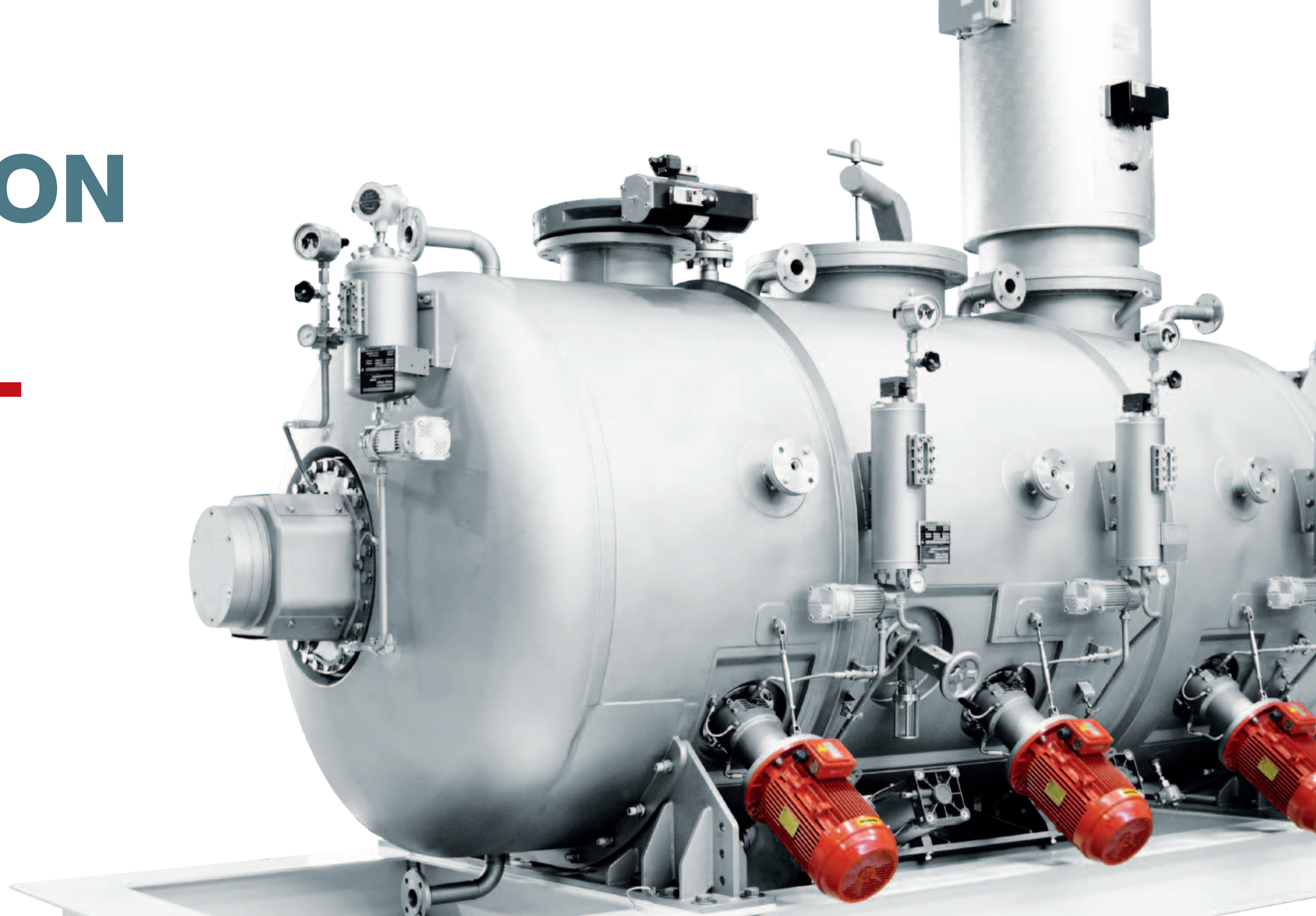
Mixing

35%

Filtration

25%

Valves, Monitoring,
Conveying and Extraction



Production SECTORS

Mix designs and builds mixing systems
and components suitable for treating
different types of products in all sectors



Food



Chemical



Feedstuff



Plastic



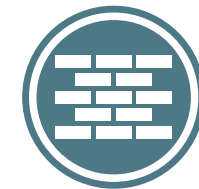
Pharmaceutical



Industry



Cosmetics



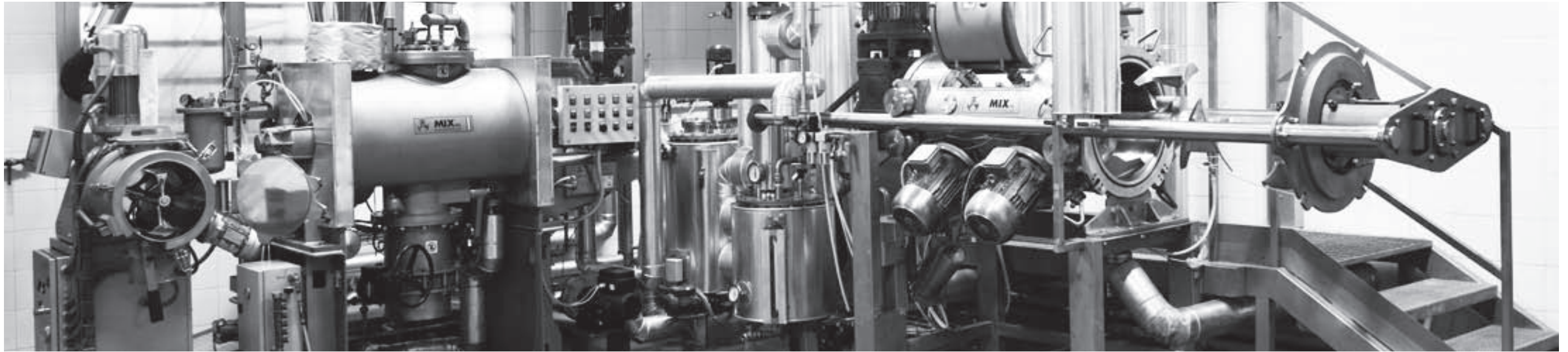
Building



Laboratory



Ecology



LABORATORY TESTING

Mixing, granulation, drying and reaction

CERTIFICATIONS

**The Company's Management
system complies with the standards:**

ISO 9001

Quality Management System Certificate

ISO 14001

Environmental Management System Certificate

ISO 45001

Occupational Health and Safety Management System Certificate



A photograph of an industrial factory floor, likely a steel mill, with large machinery and a red overlay. The text "MIXING DIVISION" is prominently displayed in white, bold, sans-serif capital letters across the center of the image. The background shows various industrial components, including large metal structures, pipes, and machinery, all rendered in a monochromatic red color scheme.

MIXING DIVISION

BATCH PROCESS

Mixing tools:
Ploughshare
Mix Paddle
Four ribbons



CONTINUOUS PROCESS

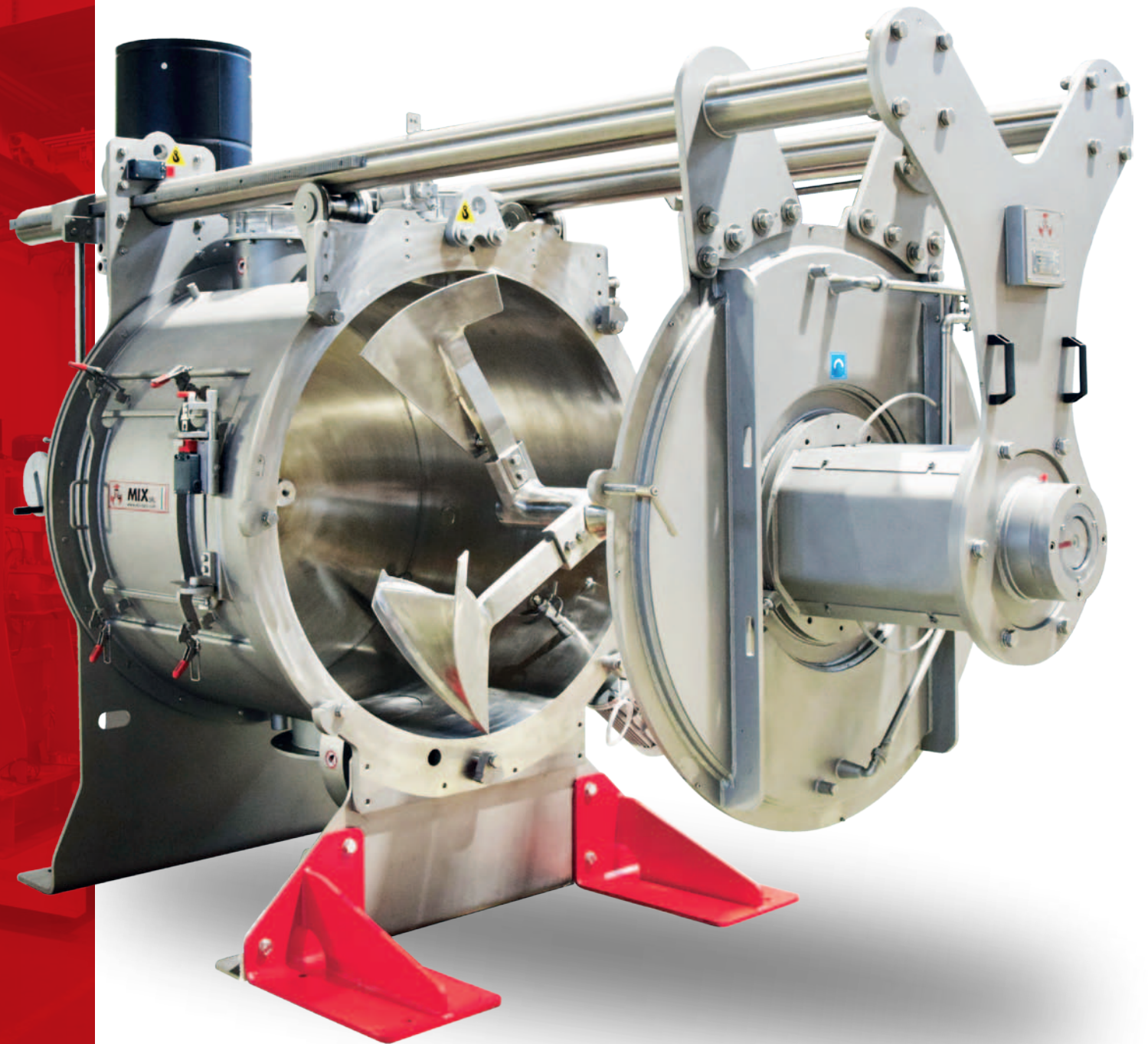
Mixing tools:
Ploughshare
Mix Paddle



EXTRACTA SHAFT

(BATCH PROCESS)

Mixing tools:
Ploughshare
Mix Paddle



REACTOR/ DRYER (BATCH PROCESS)

IN PRESSURE OR IN FULL VACUUM

Mixing tools:
Ploughshare
Mix Paddle



LABORATORY

(BATCH PROCESS)

R&D PROCESSES SCALABLE
IN INDUSTRIAL PLANT

Mixing tools:
Ploughshare
Mix Paddle



The background of the image shows industrial machinery, likely part of a water filtration system. It features several large, cylindrical tanks or filter housings arranged in a row. The image is heavily overlaid with a semi-transparent red color, which serves as a background for the text. The text "FILTERING DIVISION" is written in a bold, white, sans-serif font, centered horizontally across the middle of the image. The overall aesthetic is industrial and professional.

FILTERING DIVISION

FILTERS

Applications:

Pneumatic transport in pressure
Pneumatic transport in vacuum
Dedusting with electrofan

Filtering elements:



Bags



Cartridges



The background of the image shows a close-up, slightly blurred view of a silo roof structure. It features several large, curved metal panels or sections, some of which are labeled with the word "MIX". The entire image is covered with a semi-transparent red overlay, which serves as a background for the white text.

SKYFILTER®

(SPECIFICALLY DESIGNED FOR SILO ROOF)

SILO FILTERS

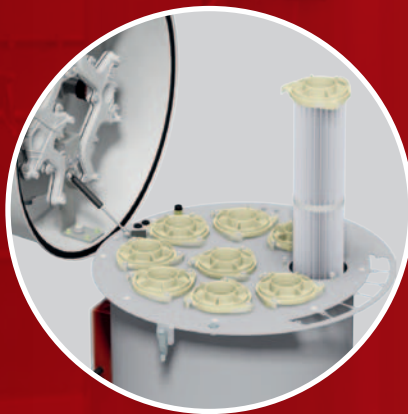
Applications:

Pneumatic transport in pressure
Dedusting with electrofan

Filtering elements:



Bags



Cartridges





INTERCEPTING DIVISION

VALVES

Applications:

To intercept powders and granules

Products:

Butterfly valves

Slide valves

Pinch valves





CONVEYING DIVISION

LOADING BELLOWS

Applications:

To discharge powders and granules in tanks or in bulks

Technical Solutions:

Carbon steel / AISI 304 / AISI 316

Built-in filter

Rotary/capacity/vibrating/level indicator





EXTRACTING DIVISION

SILOS COMPONENTS

Products:

Paddle level indicators

Pressure relief valve

Manholes

Pressure gauges

Fluidising nozzles

Fluidising dishes

Fluidising plates





MIX Srl unipersonale

Operative headquarters and administration:

Via Volturmo n°119/A - 41032 CAVEZZO (MO) Italy

Registered office:

Via Cesare Cantù n°1 - 20123 MILANO (MI) Italy

Tel: +39 0535.46577 - info@mixsrl.it

www.mixitaly.com