



ALIXO

ALIXO FOOT

Multifunctional anti-vibration base for outdoor units, ducts or cabling on flat surfaces or flat roofs

Alixo Foot



The Alixo Foot range consists of multifunctional bases for HVAC outdoor units, piping and cabling on flat surfaces or roofs. The bases are made of SBR recycled rubber and have an embedded aluminium profile of 40 x 21 mm. The Alixo Foot has a temperature range between -40°C and +80°C, is UV-resistant, water-repellent and vibration-damping.

Choice between individual bases 400, 600 or 1000 mm without mounting parts or bundled in a handy set with nuts M10x30.

Item nr.	dimensions	load/foot
Alixo Foot individual		
ALX-1241	400 x 135 x 95 mm	130 kg
ALX-1211	600 x 135 x 95 mm	195 kg
ALX-1221	1000 x 135 x 100 mm	320 kg
Alixo Foot set of 2 feet including nuts M10x30		
ALX-1249	400 x 135 x 95 mm	130 kg
ALX-1219	600 x 135 x 95 mm	195 kg
ALX-1229	1000 x 135 x 100 mm	320 kg



nuts
M10x30



Alixo Universal Foot

Rubber mounting blocks for supporting pipes and cables with 1 or 3 M8 metal plug-in sockets to fix a mounting rail or to fix pipe supports. Mounting rails or pipe carriers are available separately.



Item nr.	dimensions	load/foot
ALX-1000	120 x 190 x 95 mm	90 kg
ALX-1001	240 x 190 x 95 mm	120 kg

Alixo High Foot & Alixo MAMUT



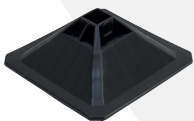
Alixo High Foot & Alixo MAMUT are extra-high, multi-purpose socles specifically for heat pumps on flat surfaces or flat roofs. These plinths are made of SBR recycled rubber and have an embedded aluminium profile of 37 x 19.5 mm. They have a temperature range between -40°C and +80°C. With their height of 150 or 230 mm, they are ideal for winter conditions. This type of base is also UV-resistant, water-repellent and vibration-damping.

Choice between individual bases without mounting parts or, only for 600 mm, bundled in a handy set with nuts M10x30.

Item nr.	dimensions	load/foot
Alixo High Foot individual		
ALX-1111	600 x 200 x 150 mm	300 kg
ALX-1131	1200 x 200 x 150 mm	500 kg
Alixo High Foot set of 2 feet including M10x30		
ALX-1119	600 x 200 x 150 mm	300 kg
Alixo MAMUT individual		
ALX-1411	600 x 200 x 230 mm	300 kg



nuts
M10x30



Alixo Frame Foot

The ALX-1803 consists of a set of 2 H-frame adjusting legs for profile 41 x 41 and 1 attachment kit.

An attachment kit (ALX-1908) contains 2x 1+1 corner bracket 90°, 4x M10x25 hexagon bolt + washer and 4x M10 sliding nut TVZ.

Item nr.	dimensions	load/foot
ALX-1803	305 x 305 x 120 mm	175 kg
ALX-1908	attachment kit	

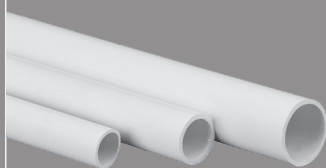
Consider also ALIXO for:



wall brackets



wall and roof inlets



rigid condensation drains

ALIXO

