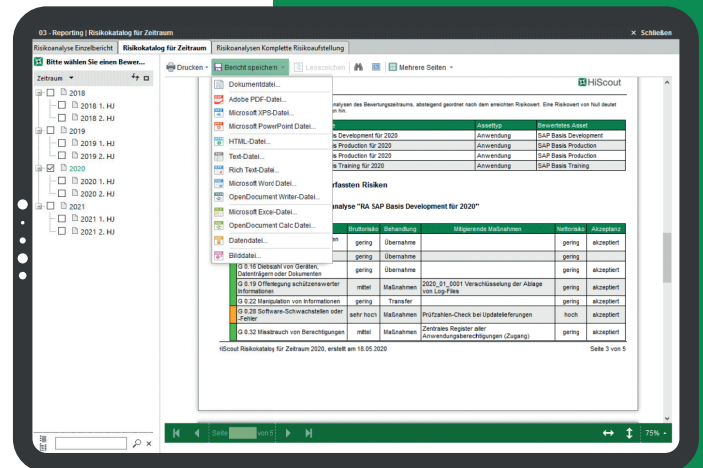


HiScout ISM

Information security management in accordance with ISO 27001/2



ISM tool for large organisations with specific requirements

- ✓ Seamless integration in existing tool landscape
- ✓ Efficient, robust client management
- ✓ Organisation-specific adaptation and analysis

Connection to third-party systems

HiScout DataExchange's incoming and outgoing interfaces combine data from different systems and ensure high data quality.

Data acquisition with online questionnaires

In an automated process, data is collected directly from employees and service providers and read into the HiScout database after review.

Role-specific work areas

The user interfaces can be quickly and easily adapted for special tasks and called up directly from a web browser.

Flexible risk management

Risk analyses can be customised and performed in accordance with industry standards such as ISO 27005, ISO 31000 or BSI 200-3.

Tailored reporting

Integrated live reporting at every step provides up-to-date information for decision-makers. Create your own management reports with HiScout DocGen.

For use in highly regulated and sensitive situations

Established in organisations with particularly confidential data and demanding compliance requirements, such as federal and state government agencies, banks and insurance companies.

Client management with preconfigured authorisation system

Fast customised setup of hierarchical client structures and easy management of data access rights using preconfigured roles.

Supported standards

Key standards such as ISO 27001/2, BSI IT baseline protection catalogues and COBIT are supplied and updated regularly. Customer-specific compliance rules can be added as needed.

Typical uses

- ✓ Changing and extending the data model as needed
- ✓ Identifying specific industry standards and contractually agreed requirements
- ✓ Mapping policies, process descriptions and security organisations
- ✓ Determining assets' protection needs and propagating them automatically based on their dependencies
- ✓ Monitoring and documenting the implementation of security measures across processes
- ✓ Managing external audits and performing self-assessments
- ✓ Handling security incidents in a standardised, fully transparent and traceable manner
- ✓ All changes to data are fully documented and traceable
- ✓ The complete HiScout Baseline Protection module is included and can be used

Upgrade to the integrated GRC Suite

All HiScout modules use a common database, standardised user interfaces, and harmonised basic functions.

Providing and using resources for multiple purposes reduces working time and operating costs.

- ✓ **HiScout Baseline Protection**
IT baseline protection and risk analysis in accordance with BSI standards 200-1, 200-2 und 200-3
- ✓ **HiScout BCM**
Emergency management in accordance with BSI standard 200-4 or ISO 22301
- ✓ **HiScout Data Protection**
Complete solution for GDPR-compliant data protection



HiScout Platform

Basic functions

- ✓ Same master data for management systems across all modules
- ✓ Data model can be extended without programming
- ✓ Configurable applications
- ✓ Automation of recurring activities (with the HiScout Business Logic Engine)
- ✓ Role-based access rights
- ✓ Release and versioning workflows
- ✓ Automatically generated reports and graph-based analyses
- ✓ Integration of any external documents into system

Extensions

- ✓ **HiScout Questionnaire**
Create your own questionnaires (HTML or PDF) and import results into your database
- ✓ **HiScout DocGen**
Fully automatic generation of customised documents and reports
- ✓ **HiScout DataExchange**
Connection to third-party systems using generic interfaces
- ✓ **HiScout Business Logic Engine**
Automation of complex processes with configurable workflows