

Productive process

*Imago has developed three devices for total control
of the die-casting production process.*

These systems, which were designed to be inserted and interfaced
into the die-casting island, are used to carry out the checks after
the moulding (**Mhira3D**), blanking (**Anglerfish**)
and mechanical processing (**Magpie**) phases.

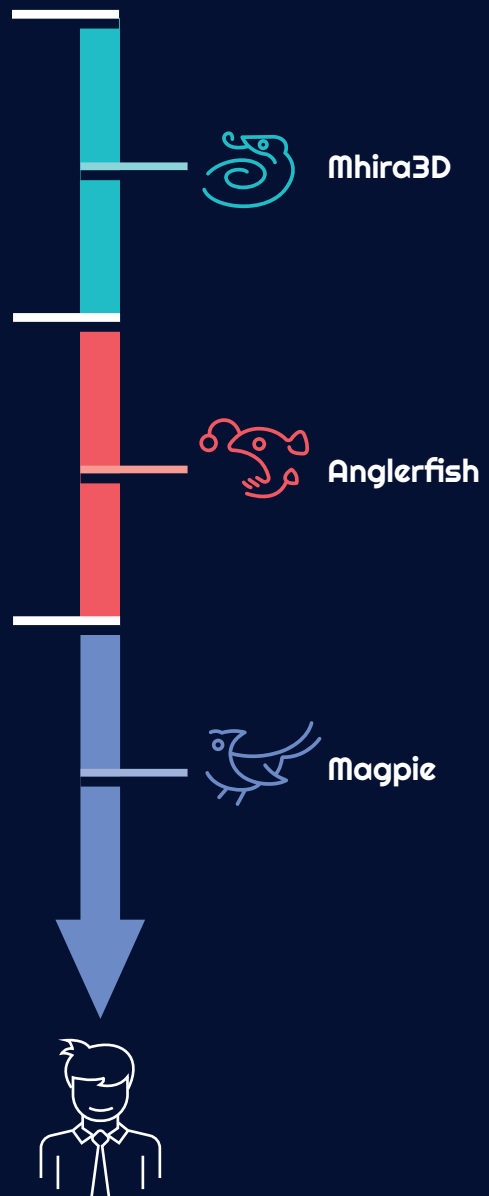
printing



shearing



machining



Mhira3D



Anglerfish



Magpie

IMAGO SRL



Via Tangenziale Ovest, 27
25045 Castegnato (BS)

+39 030 3660034

info@imagovision.it



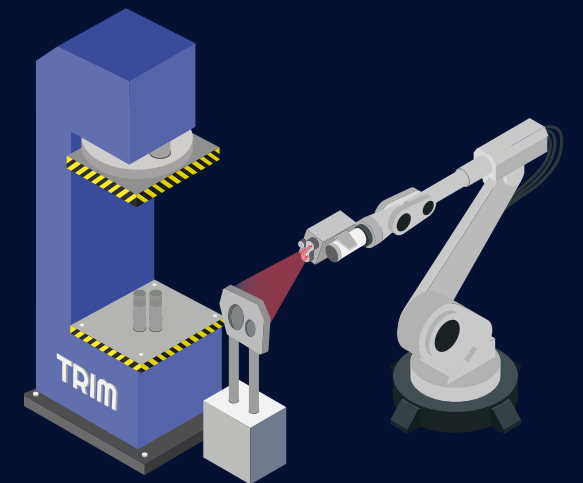
Follow us on social media



imagovision.it



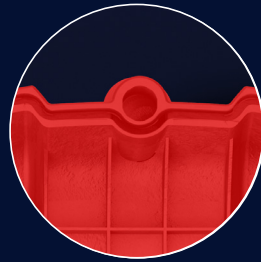
Anglerfish



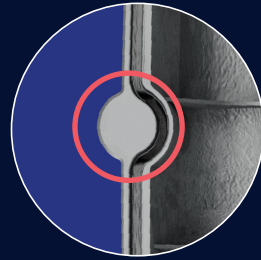
VISION SYSTEMS
FOR DIE CASTING

Anglerfish

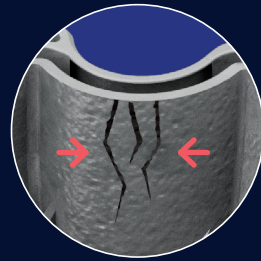
3D integrity check,
post-shearing deformations and breaks



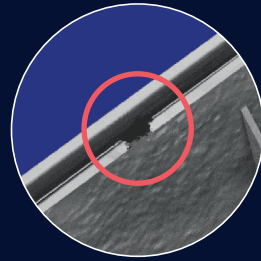
► 01
Dimensional Control ■
Complete control of the integrity and conformity of the piece through reconstruction and 3D models comparison



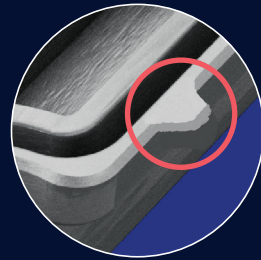
► 02
Occlusions ■
Checking the opening of holes and interception of occlusions (even partial) due to the presence of burrs or broken plugs



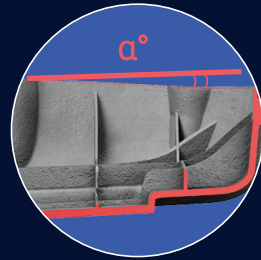
► 03
Cracks ■
Detection of cracks in the surface areas of the piece*



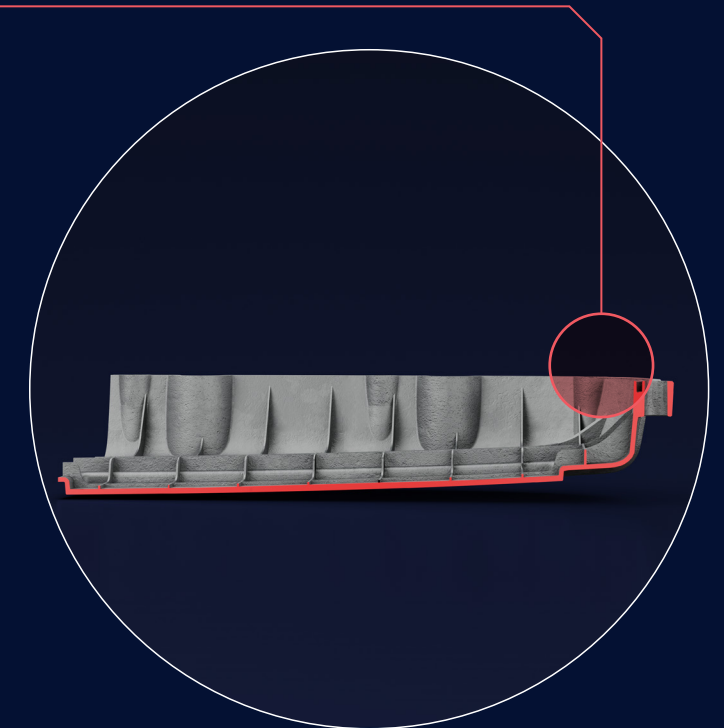
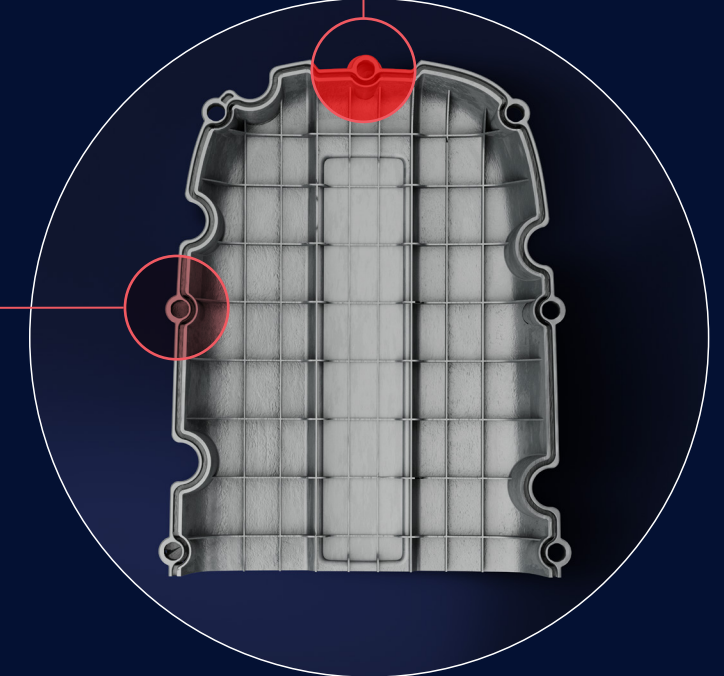
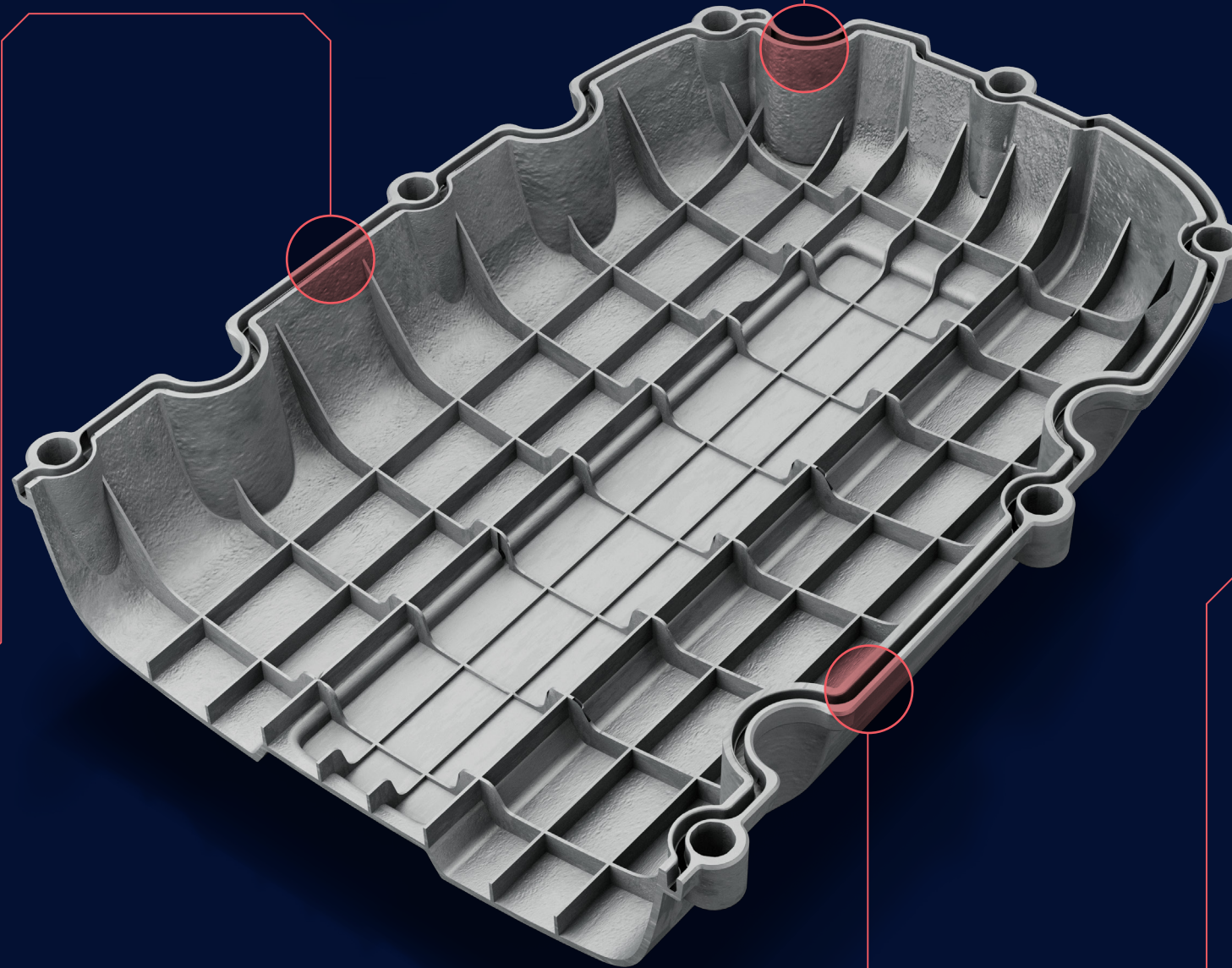
► 04
Lack or abundance of material ■
Identification of material excesses or lacks due to molding or shearing problems



► 05
Regularity ■
Regularity check of cut areas



► 06
Flatness ■
Detection of any planar deformations of the piece



Tracking & Reporting
Objectified and tracked checks for each individual piece.
Data storage and display for statistical analysis of production and process optimization



Product identification and marking
Reading and marking of DataMatrix, QR code, Barcode and various types of stamps