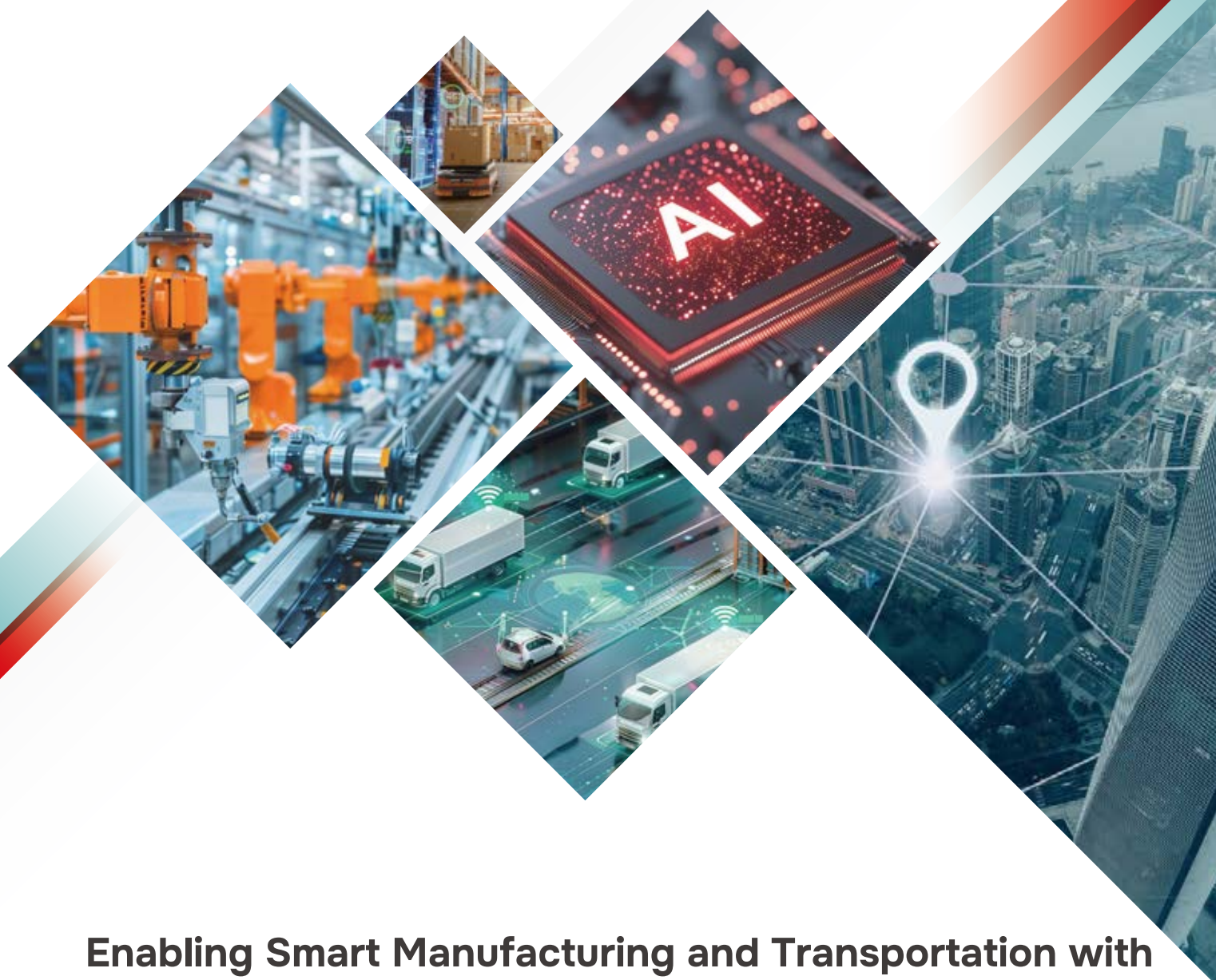


Shape Tomorrow's Cities with Edge AI



**Enabling Smart Manufacturing and Transportation with
Intelligent Industrial Computers**

Edge AI Platform | Embedded Computer | In-Vehicle System | IoT Gateway

EveFocus
Your Safety, Our Focus

ECROSSER
Acrosser Technology Co., Ltd.

Accelerate Your Products Time-to-Market

Intelligent edge devices for all your IoT needs



With over 30 years of experience, Acrosser delivers advanced IPC solutions to meet growing demands for innovative edge devices. Our AI-enabled hardware ensures seamless integration, high performance, and scalability, helping you build market-ready products faster while focusing on innovation.

Edge computing solutions for in-vehicle systems



Since 1995, EverFocus has led in smart security and AI-powered solutions, offering products tailored to AIoT needs. Our edge AI technology enables real-time data processing, enhanced safety, and optimized performance in smart security, vehicles, and smart cities, accelerating your journey from concept to deployment.

NVIDIA Jetson Series



The NVIDIA Jetson series delivers exceptional GPU performance in a compact form factor, designed for durability and long-lasting reliability - ideal for demanding AI and graphical workloads in various environments.



Orin Nano
20-40 TOPS



Orin NX
70-100 TOPS



AGX Orin
200-275 TOPS



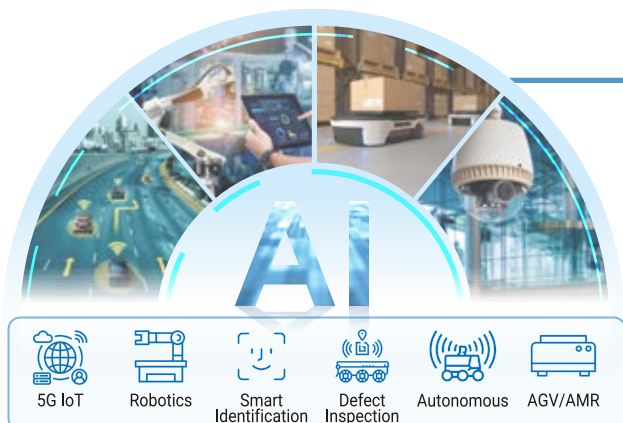
AGX Xavier
30-32 TOPS

X86 Intel Platforms



Our x86 Intel platforms support leading AI frameworks, delivering optimized inference with Intel Deep Learning Boost. Scalable from Intel Atom® to Xeon®, they enable hybrid AI with MXM 3.1 Type A/B form factor GPU module and Hailo-8 integration for enhanced performance. Built-in security features, such as Intel® SGX and Boot Guard, ensure data protection. With Intel's tools like OpenVINO and OneAPI, our solutions simplify AI deployment and accelerate time-to-market. Perfect for complex edge AI applications.

MXM & Hailo-8 AI Accelerator



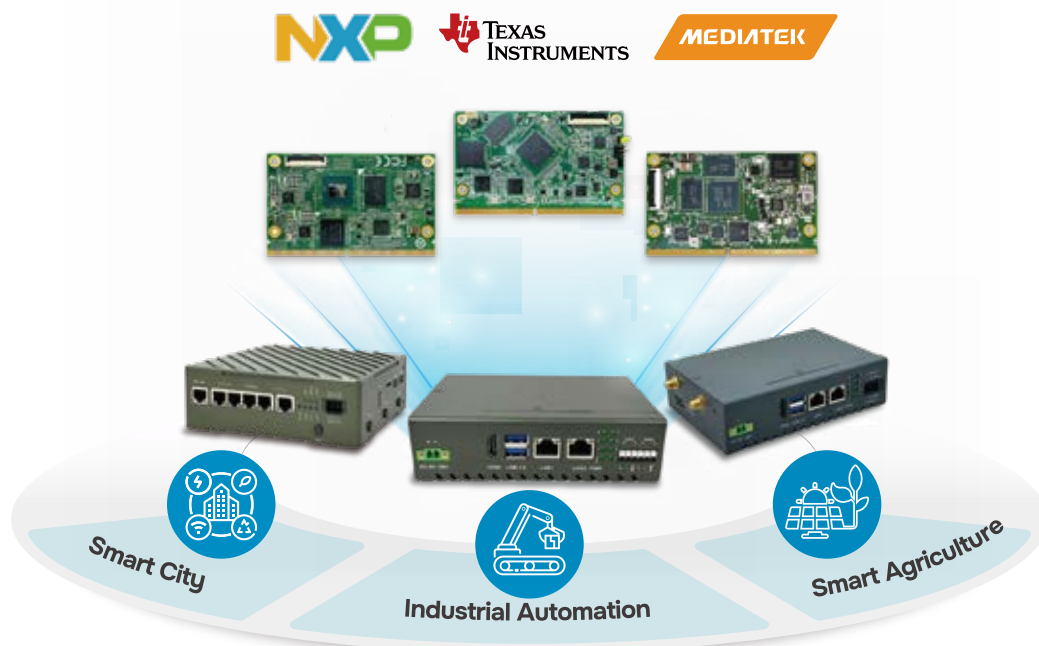
Let's bring your innovative ideas to life—
Partner with us for faster, smarter solutions today.

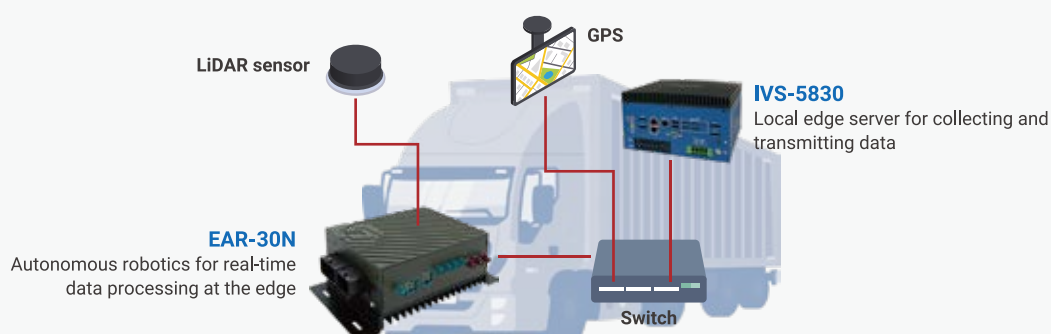


ARM-based Smart Gateway

arm

Acrosser's ARM-based smart protocol gateways deliver energy efficiency, cost-effectiveness, and real-time data processing for IoT applications. Their rugged design makes them ideal for industrial environments. With seamless compatibility for popular IoT protocols, these gateways integrate easily into existing networks, offering a reliable, scalable solution for edge deployments across industries like smart cities, manufacturing, and automation.





Selection guide

NVIDIA



Model Name	EAC-10N	EAC-30N	EAC-50N ^{Preliminary}	EAC-70N ^{Preliminary}	EAR-30N ^{Preliminary}	eNVP-JAO-AI eNVP-JAX-AI
Platform	NVIDIA® Jetson Orin™ NX / NVIDIA® Jetson Orin™ Nano			NVIDIA® Jetson AGX Orin™	NVIDIA® Jetson Orin™ NX	NVIDIA® Jetson AGX Orin NVIDIA® Jetson AGX Xavier
AI performance	Up to 100 TOPS / Up to 40 TOPS			Up to 275 TOPS	Up to 100 TOPS	Up to 275 TOPS / Up to 32 TOPS
Ethernet / PoE	1 x GbE LAN	• 1 x GbE LAN • 1 x Fast Ethernet	• 1 x GbE LAN, PD 60W • 1 x GbE LAN, PSE 30W, • DC Mode: 4 x GbE LAN, PSE • 1 x GbE LAN	• 2 x GbE LAN • 1 x 10GbE LAN	• 8 x 1G Base-T1 Ethernet ports • 3 x M12 X-coded GbE Ethernet ports	• 1 x 10GbE LAN • 1 x GbE LAN • DC Mode: 8 x 10/100 MbE • PSE Max 120W
I/O	• 1 x HDMI 2.0-Out • 2 x USB 3.2 Gen1 type A • 2 x RS-232/485 switchable	• 1 x HDMI 2.0-Out • 4 x USB 3.1, Type-A • 1 x RS-485 • 1 x CAN-FD	• 1 x HDMI 2.0-Out • 4 x USB 3.1, Type-A • 2 x RS-485 • 1 x CAN bus	• 1 x HDMI 2.0-Out • 4 x USB 3.2, Type-A • 1 x USB Type-C • 2 x RS-485 • 1 x CAN bus	• 1 x HDMI 2.0a/b • 4 x USB 3.2 Gen1 type A, 1 x micro USB • 1 x 48pin/1 x 32pin CMC lockable connector • 4 x GMSL 2 camera FAKRA Z code • 2 x FAKRA C code connector for Wi-Fi • 3 x Max. FAKRA D coded connector for 4G/5G	• 1 x HDMI 2.0-Out • 2 x USB 3.1, Type-A • 2 x USB 2.0, Type-A • 1 x RS-485 • 1 x RS-232 • 8 x GPIO
Expansion	• 1 x M.2 E-Key 2230 • 1 x M.2 M-Key 2242 • 1 x MIPI CSI-2 with FPC connector	• 1 x M.2 M-Key 2280 • 1 x M.2 E-Key 2230 • 1 x M.2 B-Key 3052	• 1 x M.2 M-Key 2280 • 1 x M.2 E-Key 2230 • 1 x M.2 B-Key 3042/3052	• 1 x M.2 E-Key 2230 • 1 x M.2 B-Key 3052 • 1 x MIPI CSI-2 Connector	• 1 x M.2 M-Key 2280 • 1 x M.2 E-Key 2230 • 1 x M.2 B+M Key 3052	• 1 x M.2 M-Key 2280 • 1 x M.2 E-Key 2230 • 1 x M.2 B-Key 3042/3052 • 2 x 2.5" bay SSD
Power Requirement	9 ~ 36 VDC	9 ~ 36 VDC	9 ~ 36 VDC	9 ~ 36 VDC	9 ~ 36 VDC± 5%	9 ~ 55 VDC
Operating Temperature	-20 ~ 60 °C	-20 ~ 60 °C	-20 ~ 60 °C	-20 ~ 60 °C	-20 ~ 60 °C	-20 ~ 60 °C

ARM



Model Name	SIG-C101	SIG-C302	SIG-M101	NEC-C501	SPG-M041	SPG-3352Z
CPU/MCU	NXP i.MX 93 NXP i.MX 8M Plus TI AM625 MediaTek MT8395	NXP i.MX 8M Plus	NXP i.MX 8M Plus	NXP i.MX 8M Plus	ST STM32F429	TI AM3352
Ethernet	1 x GbE LAN	2 x GbE LAN	2 x Gigabit Ethernet	6 x GbE LAN	2 x 10/100Mbps	2 x GbE LAN
Serial Port	2 x RS-232/422/485	2 x RS232/RS422/RS485	2 x RS232/RS422/RS485	2 x RS232/RS485	2 x RS232/RS485	1 x RS485
DI/DO	• 2 x Digital Input • 2 x Digital Output	—	—	• 4 x Digital Input • 4 x Digital Output	4 x Digital Input	—
USB	2 x USB 2.0	2 x USB 3.0	2 x USB 3.0	2 x USB 3.0	—	2 x USB 2.0
CAN Bus	1 x CAN-FD	2 x CAN-FD	2 x CAN-FD	—	—	—
Security	TPM 2.0	TPM 2.0	TPM 2.0	TPM 2.0	—	—
Expansion	• 1 x Mini PCIE • 1 x Micro SD Slot	• 1 x M.2 B-Key • 1 x Micro SD Slot • 1 x SIM Card Slot	• 1 x Mini PCIE • 1 x Micro SD Slot • 1 x SIM Card Slot	• 1 x M.2 B-Key • 1 x M.2 E-Key • 1 x Micro SD Slot • 1 x SIM Card Slot	• 1 x Mini PCIE • 1 x Micro SD Slot • 2 x SIM Card Slot	• 1 x Mini PCIE • 1 x Micro SD Slot • 1 x SIM Card Slot
Power Requirement	9 ~ 36 VDC	9 ~ 36 VDC	9 ~ 36 VDC	9 ~ 36 VDC	9 ~ 36 VDC	9 ~ 36 VDC
Operating Temperature	-20 ~ 70 °C	-20 ~ 70 °C	-20 ~ 70 °C	-20 ~ 70 °C	-20 ~ 70 °C	-20 ~ 70 °C

Selection guide

Intel Edge Computer



Model Name	IES-2031	IES-3030	IVS-5830	AIS-7000	AIS-5530	IES-5410
CPU	Intel® Processor N97	13th Gen Intel® Core™ i7/i5/i3/Celeron® Processor SoC	12th Gen Intel® Core™ i7/i5/i3/Celeron® Processor SoC	Intel 10th Gen Gen Xeon® Core i9/i7 Processor LGA1200 Socket Type *MAX 80W TDP CPU	Intel® 13th/12th LGA1700 Socket Type *Max. 65W TDPs under 180A	Intel® 11th Generation Core™ i7/i5/i3 Processor
AI performance	Hailo-8 AI module up to 26 TOPS		GPU MXM 3.1 Type A up to 35W (Arc A370M 56 TOPS (Int8) peak) (RTX A1000 6.66 TFLOPS peak FP32)	—	—	—
Ethernet	2 x 2.5 GbE LAN	• 1 x GbE LAN • 1 x 2.5 GbE LAN	• 2 x GbE LAN • 1 x 2.5 GbE LAN	• 2 x GbE LAN • 2 x GbE PoE LAN	2 x GbE LAN	• 1 x GbE LAN • 1 x 2.5 GbE LAN
I/O	• 2 x USB 3.2Gen1 • 2 x USB 3.2Gen2 • 1 x HDMI 2.0b • 1 x DP 1.2 • 1 x DP 1.4 via USB Type C • 2 x RS232/422/485	• 2 x USB 3.2Gen1 • 2 x USB 3.2Gen2 • 1 x HDMI 2.0b • 1 x DP 1.2 • 1 x DP 1.4 via USB Type C • 2 x RS232/422/485	• 2 x RS-232/RS422/485 • 4 x Type A USB3.2 Gen 2 • 2 x Type A USB 2.0 • 1 x Type C USB 3.2 • 1 x HDMI, 1 x DP • 2 x CAN Bus • 2 x RS485, • 2DI/2 DO, Terminal block	• 4 x RS232/RS422/485 • 6 x Type A USB 3.2 Gen2 • 1 x VGA, 1 x DVI-D, 1 x HDMI • 4 DI, 4DO • DB15 Type • Mic-in, Line-out	• 4 x USB3.2 Gen 2 • 2 x USB 3.2 Gen 1 • 4 x USB 2.0 • 2 x HDMI 2.0b • 2 x DP 1.4a • 2 x RS232/422/485 • 4 x RS232	• 1 x CAN • 2 x RS-232/RS422/485 • 2 x DB9 Type RS-232 • 4 x Type A USB 3.2 Gen 2 • 2 x DP • 1 x HDMI • Mic-in, Line-out • 16 x DIO
Expansion	• 1 x M.2 2230 E-Key *Support Hailo-8 AI module A+E key • 1 x M.2 2280 M-Key • 1 x M.2 3052 B-Key	• 1 x M.2 2230 E-Key *Support Hailo-8 AI module A+E key • 2 x M.2 2280 M-Key • 1 x M.2 3052 B-Key	• 1 x M.2 M-key 2280 • 1 x M.2 E-Key 2230 • 2 x M.2 B-key 3052 • 1 x MXM 3.1	• 1 x PCI-e x16 • 1 x PCI-e x4 • 2 x mini PCI-e • 1 x M.2 M Key 2280 • 1 x M.2 B Key 3042	• 1 x PCI-e x16 • 1 x M.2 B Key 3042 • 1 x M.2 E Key 2230	• 1 x Half Size Mini PCI-e slot • 1 x M.2 B key 3052 • 1 x Nano SIM Slot
Power Requirement	12 VDC	12 VDC	9 ~ 55 VDC	9 ~ 55 VDC	12 ~ 36 VDC	12 ~ 24 VDC
Operating Temperature	-20 ~ 70 °C	-20 ~ 60 °C	-20 ~ 60 °C	-30 ~ 60/50/40 °C (35W/65W/80W TDP CPU)	0 ~ 60 °C	-20 ~ 55 °C

EverFocus
Your Safety, Our Focus



Headquarters

📍 No. 134, Ln. 235, Baoqiao Rd., Xindian Dist.,
New Taipei City 231, Taiwan (R.O.C.)
☎ +886 (2) 2662-2338
☎ +886 (2) 2662-3632
✉ sales@everfocus.com

ECROSSER
Acrosser Technology Co., Ltd.



Headquarters

📍 No. 133, Ln. 235, Baoqiao Rd., Xindian Dist.,
New Taipei City 231, Taiwan (R.O.C.)
☎ +886 (2) 2999-9000
☎ +886 (2) 2662-3632
✉ sales@acrosser.com



Sarea



CE FC

