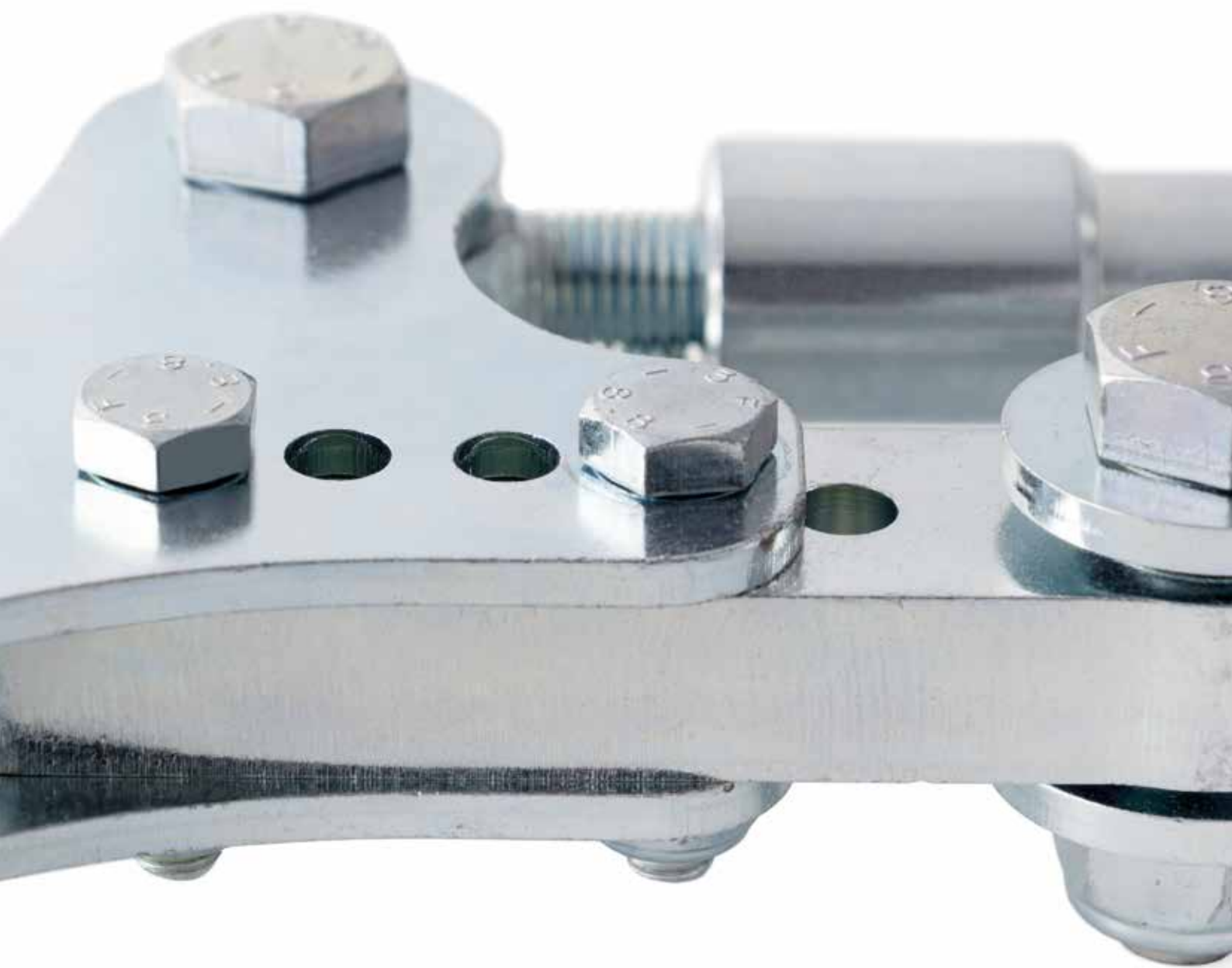


# XL KIT FOR BIFOLDING SWING GATES



Made in Italy

## What to consider before installing a swing gate

Whether in residential or industrial settings, the first thing to do is to make sure there's enough space within the manoeuvre area to install a swing gate.

## Why choose a bifolding swing gate

A bifolding swing gate is the ideal choice when there's not enough room for a 1- or 2-leaf swing gate.

HI-MOTIONS has designed a range of accessories for swing gates installed in industrial, commercial and residential settings.

This kit – designed and developed for leaves measuring up to **5 m** and weighing up to **400 kg** – consists of a side bracket and a central rod to connect the two leaves.

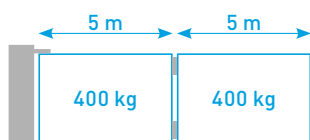
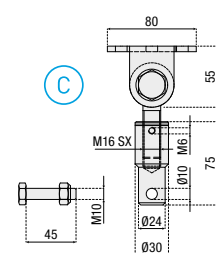
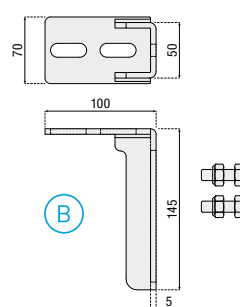
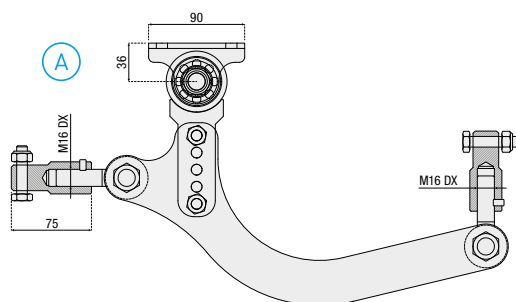
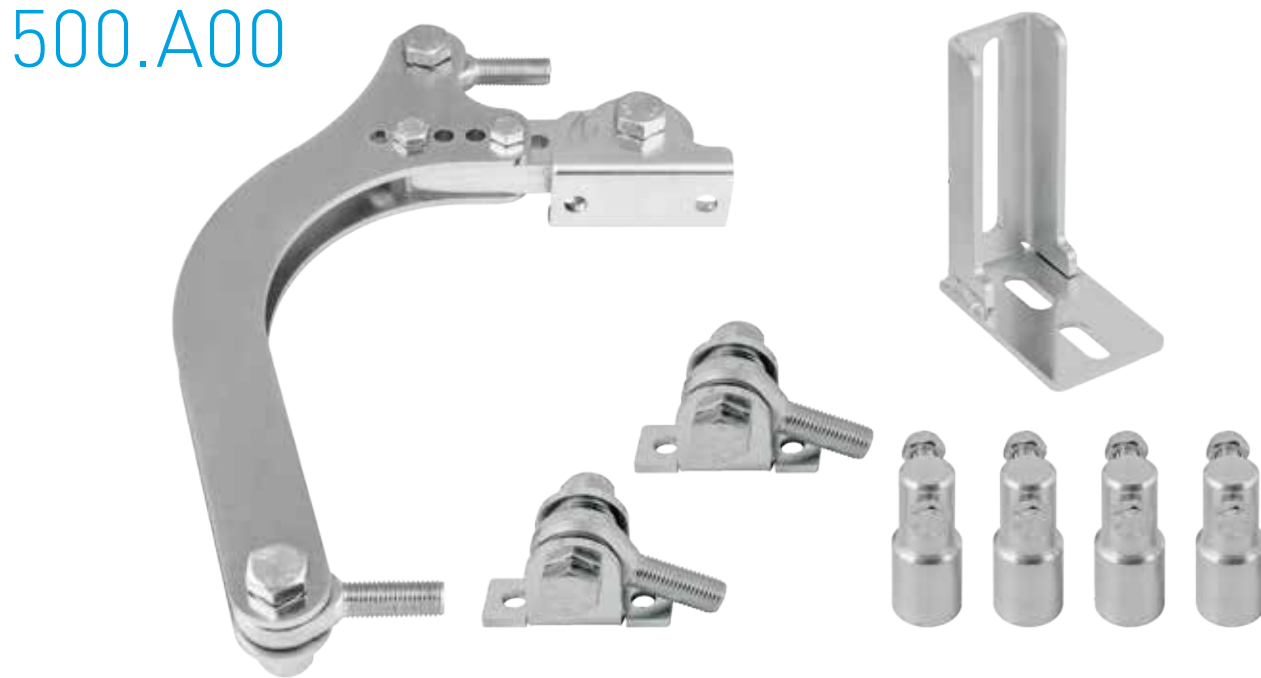
## Why choose HI-MOTIONS systems

- These systems adapt to any situation or setting
- The galvanised steel accessories allow you to make accurate adjustments, thus making installation easier



## BASIC KIT

# 500.A00



Limitations may change depending on the hinges and bolt-on bearing hinges used

<b>A</b>	Adjustable connecting rod	1
<b>B</b>	Adjustable pivot bracket	1
<b>C</b>	Joint bracket	2

# 500.A20



# 500.A30

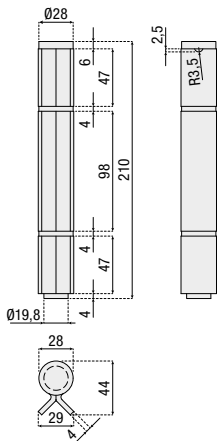


# 500.A40



ACCESSORIES

Hinge with removable pin and washers

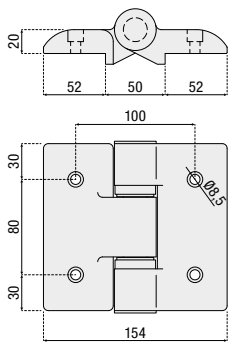


**LOAD CAPACITY**  
(of two hinges  
on the same leaf)



580.10	250 kg	2
--------	--------	---

Black aluminium double hinge

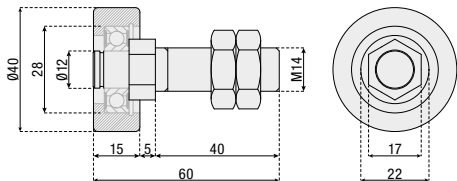


**LOAD CAPACITY**  
(of two hinges  
on the same leaf)



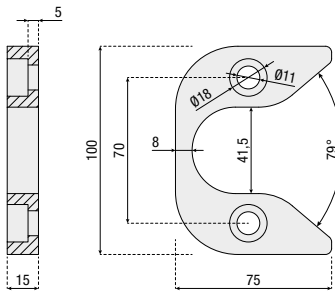
581.10	150 kg	2
--------	--------	---

Guide roller with bearing and pin



642.40	12
--------	----

Lower limit stop for R40 mm rollers



528.40	2
--------	---

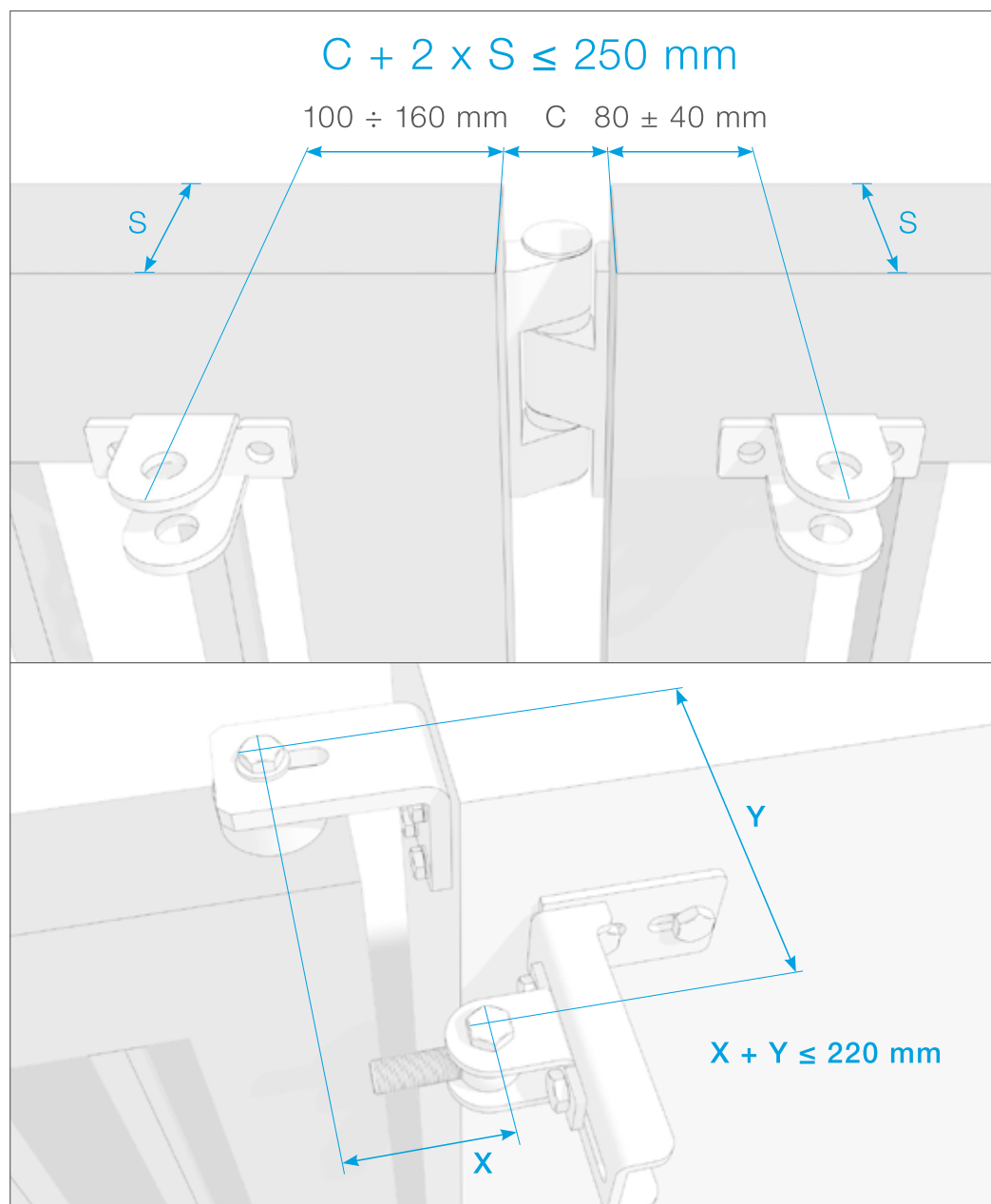
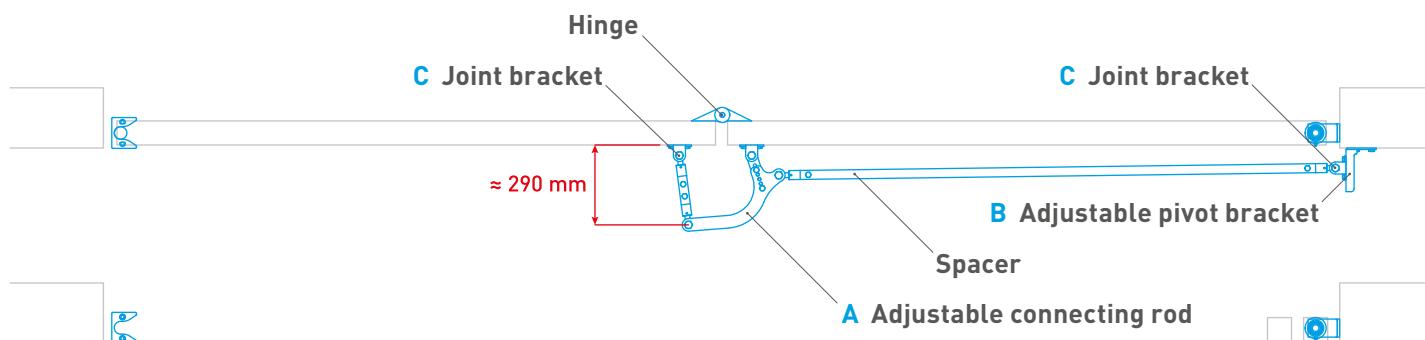
Spacer  
(30x3 mm, round)



501.31	2,75 m
--------	--------

Pipes used  
to make the spacer:

- 28x2 mm (square or round)
- 30x3 mm (square or round)
- 35x4 mm (square or round)
- 1" sch 40 (Ø 33,4x3,38)  
(square or round)



Once the bifolding kit is installed, you can choose the automation, considering the use limitations. Always comply with the applicable local safety standards.

**You  
Tube**



Watch  
the tutorial  
to see the various  
installation steps



Or download  
the instructions  
in PDF:





**HI-MOTIONS Srl**

Via dell'Industria, 91  
36030 Sarcedo (VI) ITALY  
T +39 0445 367536  
F +39 0445 367520  
[info@himotions.it](mailto:info@himotions.it)  
[www.himotions.it](http://www.himotions.it)