



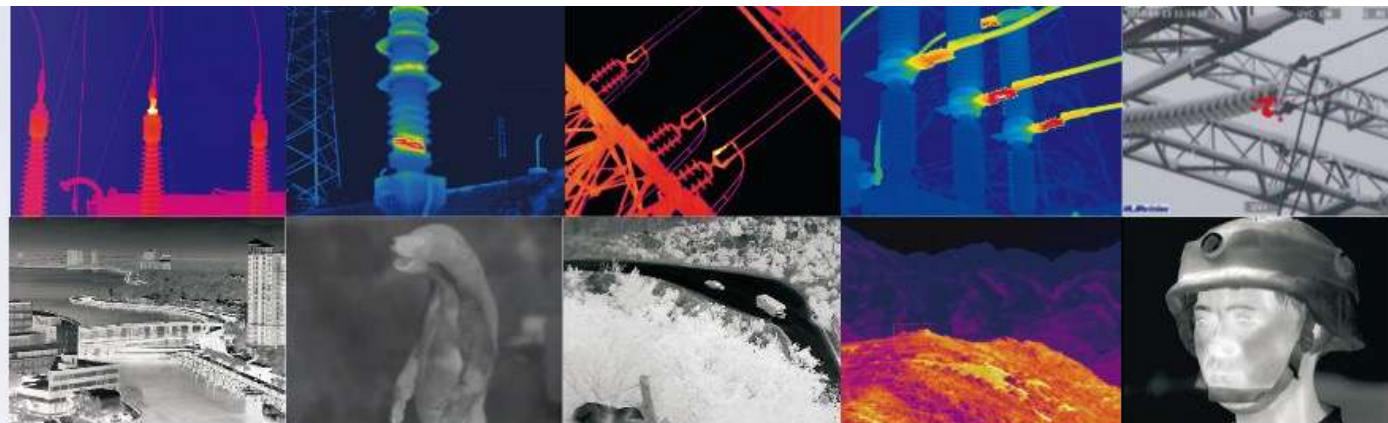
ULIRVISION

ULIRVISION TECHNOLOGY

COMPANY INTRODUCTION

Infrared-centric IntelliSense products and big data service provider

CONTENTS



**Company
Introduction**

01

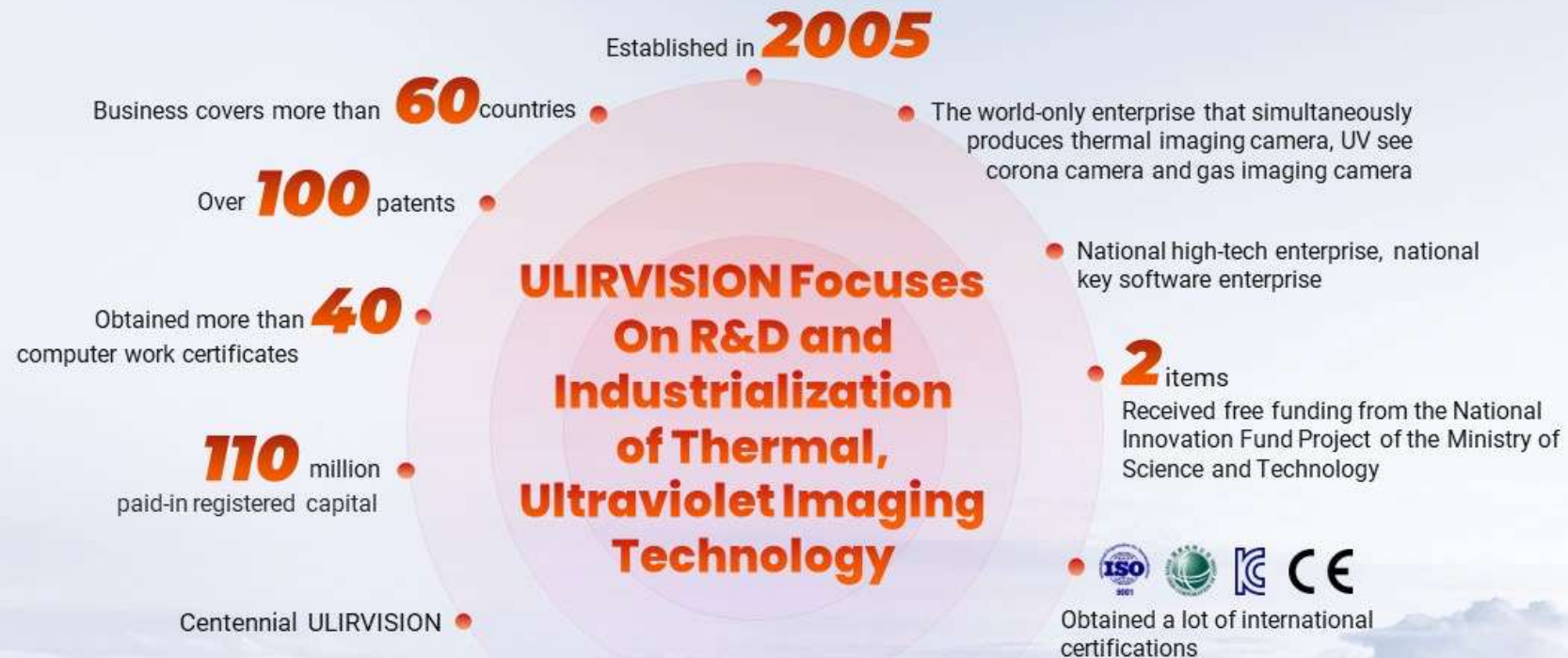
**Industrial
Business**

02

**Customer
Service**

03

Company Introduction



UL: ultraviolet IR: infrared Vision: far-sight

Company Culture



Location

Infrared-centric IntelliSense products and big data service provider



Vision

Make the world more secure



Mission

Help visionaries gain insight into the future



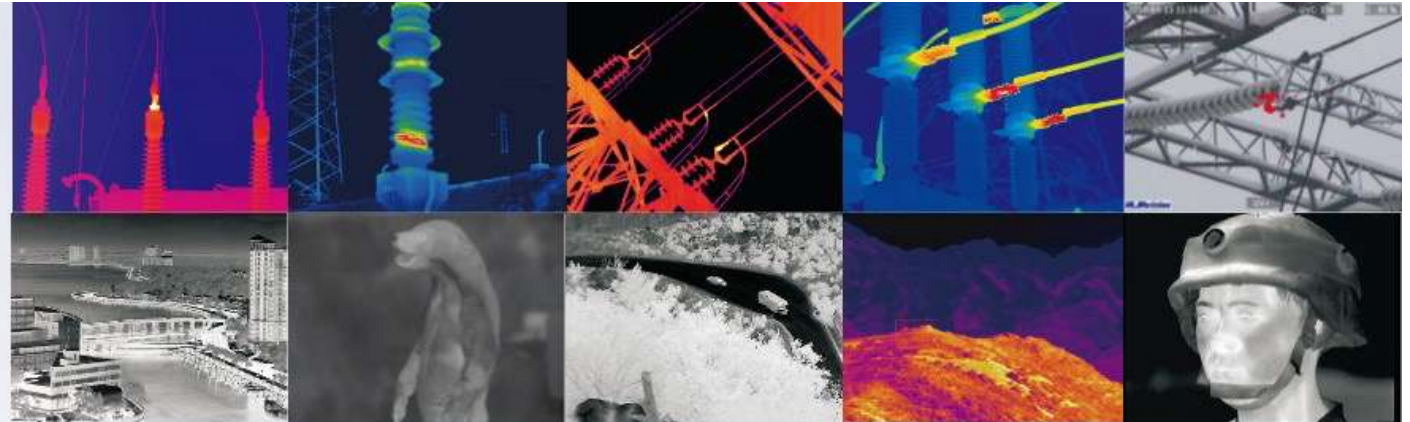
Value

Create value for customers, provide a platform for those who struggle, and contribute to social progress

Company Advantage



CONTENTS



Company
Introduction

01

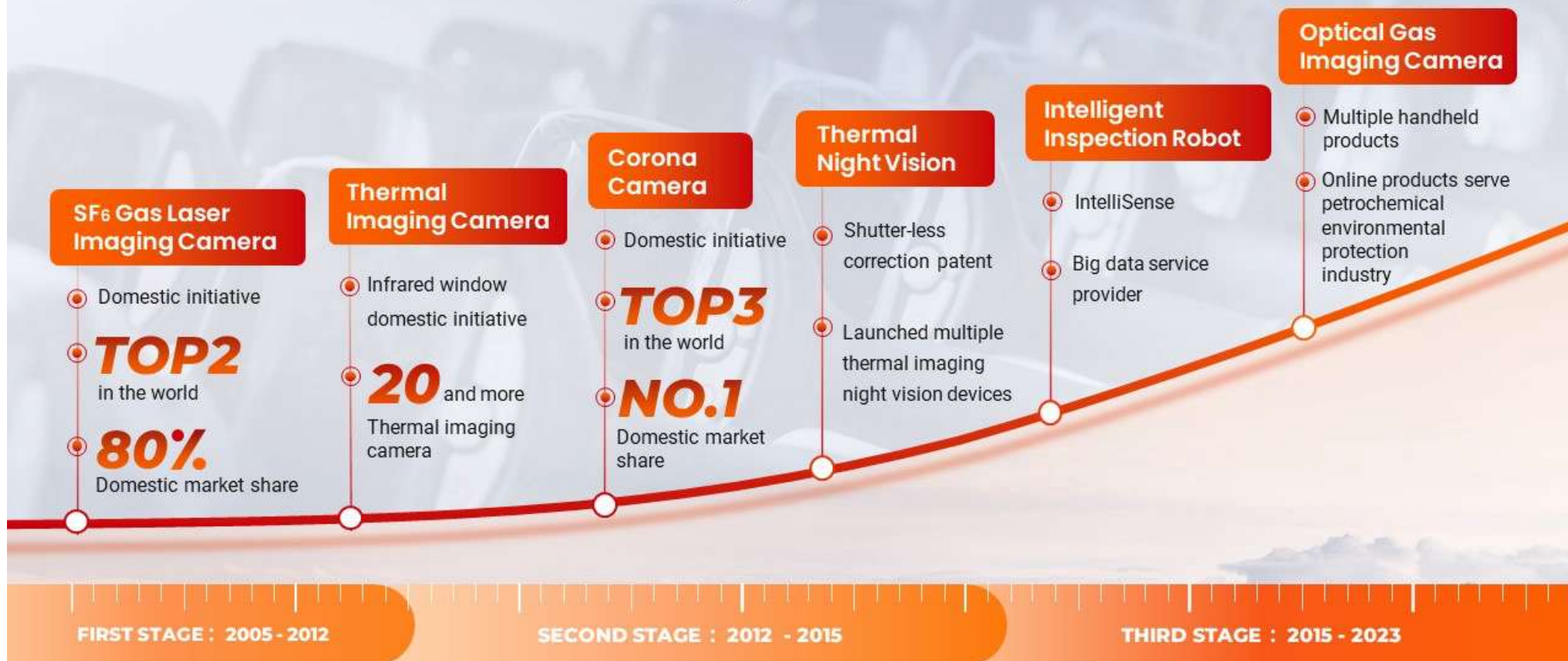
**Industrial
Business**

02

Customer
Service

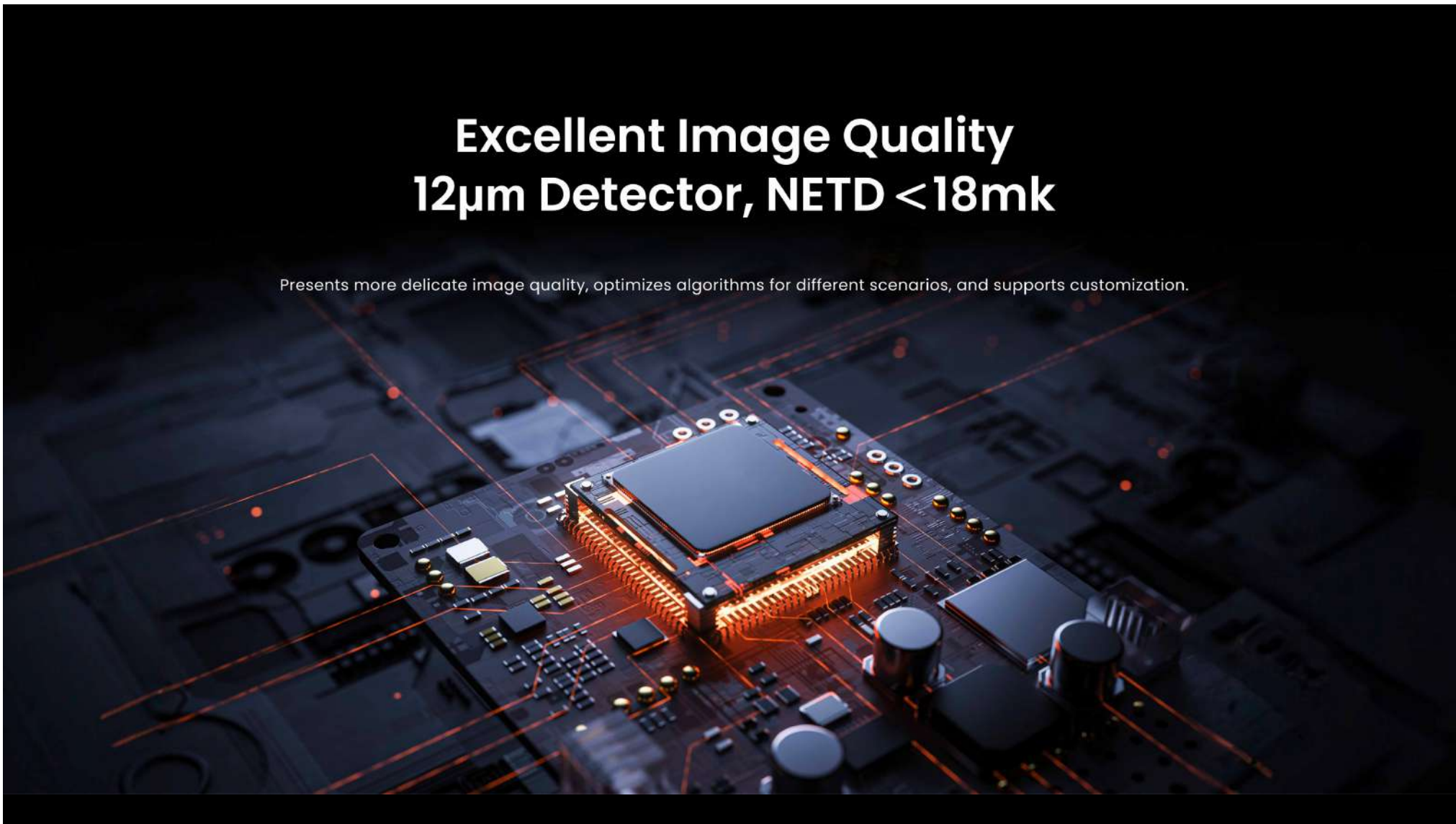
03

Product Innovation History



Excellent Image Quality 12 μ m Detector, NETD <18mk

Presents more delicate image quality, optimizes algorithms for different scenarios, and supports customization.



ULIRVISION

EAGLE SERIES

Thermal Imaging Riflescopes



ULIRVISION



Dual Field Of View (Eagle-D Series)

25mm: global search. 50mm: presenting details.



Laser Ranging 1200m

Higher accuracy, longer distance, smaller error.
The built-in high-precision laser ranging module
can achieve accurate ranging of 1200 meters,
and the target distance can be easily obtained.

Exquisite Structural Design

The structure is strong and reliable, with better impact
resistance, which can withstand 1000g/0.4ms impact.



Specification

PRODUCT
IMAGE



E325



E335



E350



E625



E635



E650

Detector	384x288 12μm	384x288 12μm	384x288 12μm	640x512 12μm	640x512 12μm	640x512 12μm
Frame Rate	50Hz	50Hz	50Hz	50Hz	50Hz	50Hz
NETD	< 18mK	< 18mK	< 18mK	< 18mK	< 18mK	< 18mK
Lens	25mm(F1.0)	35mm(F1.0)	50mm(F1.0)	25mm(F1.0)	35mm(F1.0)	50mm(F1.0)
Field of View	10.5x7.9	7.5x5.6	5.3x4	17.5x14	12.5x10	8.8x7
Detection Range	1280m	1800m	2600m	1280m	1800m	2600m
Digital Zoom	1X/2X/4X	1X/2X/4X	1X/2X/4X	1X/2X/4X/8X	1X/2X/4X/8X	1X/2X/4X/8X
Storage	32G	32G	32G	32G	32G	32G
Operating Temperature/Humidity	-20°C~55°C, 90%	-20°C~55°C, 90%	-20°C~55°C, 90%	-20°C~55°C, 90%	-20°C~55°C, 90%	-20°C~55°C, 90%
Dimension	196x62x90(mm)	196x62x90(mm)	203x66x90(mm)	196x62x90(mm)	196x62x90(mm)	203x66x90(mm)
Weight	585g	595g	620g	585g	595g	620g

Specification

PRODUCT
IMAGE



E350D



E650D

Detector	384x288,12μm	640x512,12μm
Frame Rate	50Hz	50Hz
NETD	< 18mK	< 18mK
Lens	25mm/50mm	25mm/50mm
Field of View	10.5x7.9/5.3x4	17.5x14/8.8x7
Detection Range	1280/2600m	1280/2600m
Digital Zoom	1X/2X/4X	1X/2X/4X/8X
Storage	32G	32G
Operating Temperature/Humidity	-20°C~55°C,90%	-20°C~55°C,90%
Dimension	212x66x90(mm)	212x66x90(mm)
Weight	750g	750g

ULIRVISION

EAGLE -L SERIES

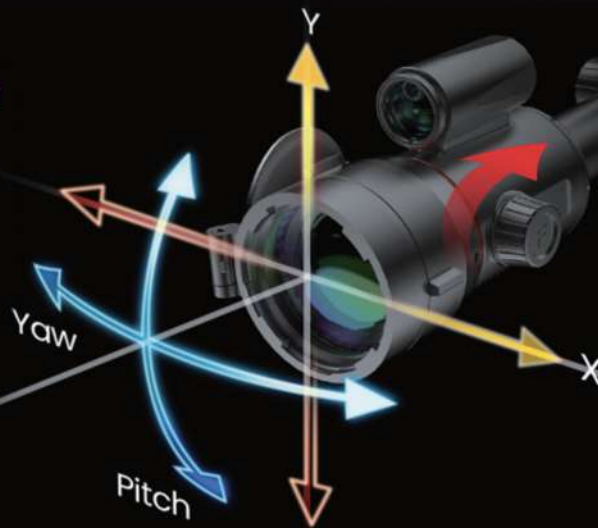
Thermal Imaging Riflescopes



ULIRVISION

Six-axis Stabilization System

Multi-dimensional flip real-time prompts provide a more stable, accurate and reliable operation experience.



Ergonomic knobs

Gear knob, slip-resistant, easy to operate Finger rotation for faster and more precise focusing.



Breakthrough Experience (Eagle-LD Series)

It can be operated with one hand. At the 25mm end, a wide FOV, suitable for flexible global searching. 60mm end, breakthrough optimization, 3000m ultra-far locking.

Specification

PRODUCT
IMAGE



EL335



EL350



EL635



EL650

Detector	384x288,12μm	384x288,12μm	640x512,12μm	640x512,12μm
Frame Rate	50Hz	50Hz	50Hz	50Hz
NETD	< 18mK	< 18mK	< 18mK	< 18mK
Lens	35mm(F1.0)	50mm(F1.0)	35mm(F1.0)	50mm(F1.0)
Field of View	7.5x5.6	5.3x4	12.5x10	8.8x7
Detection Range	1800m	2600m	1800m	2600m
Digital Zoom	1X/2X/4X	1X/2X/4X	1X/2X/4X/8X	1X/2X/4X/8X
Storage	32G	32G	32G	32G
Operating Temperature/Humidity	-20°C-55°C,90%	-20°C-55°C,90%	-20°C-55°C,90%	-20°C-55°C,90%
Dimension	399x97x76(mm)	402x102x76(mm)	399x97x76(mm)	402x102x62(mm)
Weight	960g	975g	960g	975g

Specification

PRODUCT
IMAGE



EL360D



EL660D

Detector	384x288,12μm	640x512,12μm
Frame Rate	50Hz	50Hz
NETD	< 18mK	< 18mK
Lens	25mm/60mm	25mm/60mm
Field of View	10.5x7.9/4.4x3.3	17.5x14/7.3x5.8
Detection Range	1280/3100m	1280/3100m
Digital Zoom	1X/2X/4X	1X/2X/4X/8X
Storage	32G	32G
Operating Temperature/Humidity	-20°C~55°C,90%	-20°C~55°C,90%
Dimension	427x102x76(mm)	427x102x76(mm)
Weight	1200g	1200g

ULIRVISION

FORESIGHT SERIES

Thermal Imaging Monoculars



ULIRVISION

FORESIGHT-D SERIES

Thermal Imaging Monoculars



EXQUISITE STRUCTURAL DESIGN



EXQUISITE STRUCTURAL DESIGN



Hot Spot Tracking

Automatic recognition, faster detection, hot spot tracking, more accurate locking.



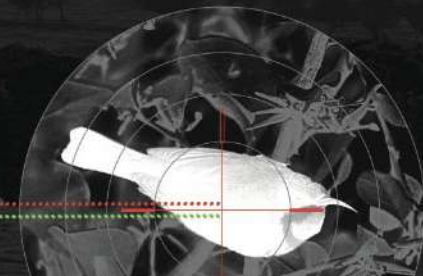
Customizable Function Keys More than Just Convenient

Excellent UI interactive interface + freely definable function keys to create an exclusive observation experience.



Automatically Estimate the Target Distance

According to the size of the measured target, the target distance is estimated by the algorithm, the maximum error per kilometer is <1m.



Specification

PRODUCT
IMAGE



F319



F325



F335



F350



F625



F635



F650

Detector	384x288 12μm	384x288 12μm	384x288 12μm	384x288 12μm	640x512 12μm	640x512 12μm	640x512 12μm
Frame Rate	50	50	50	50	50	50	50
NETD	<18mK	<18mK	<18mK	<18mK	<18mK	<18mK	<18mK
Lens	19mm(F1.0)	25mm(F1.0)	35mm(F1.0)	50mm(F1.0)	25mm(F1.0)	35mm(F1.0)	50mm(F1.0)
Field of View	13.8x10.4	10.5x7.9	7.5x5.6	5.3x4	17.5x14	12.5x10	8.8x7
Detection Range	900	1280	1800	2600	1280	1800	2600
Digital Zoom	1X/2X/4X	1X/2X/4X	1X/2X/4X	1X/2X/4X	1X/2X/4X/8X	1X/2X/4X/8X	1X/2X/4X/8X
Storage	32G	32G	32G	32G	32G	32G	32G
Operating Temperature/Humidity	-20°C~55°C, 90%	-20°C~55°C, 90%	-20°C~55°C, 90%	-20°C~55°C, 90%	-20°C~55°C, 90%	-20°C~55°C, 90%	-20°C~55°C, 90%
Dimension	186x52x52 (mm)	186x52x52 (mm)	186x52x52 (mm)	202x64x64 (mm)	186x52x52 (mm)	186x52x52 (mm)	202x64x64 (mm)
Weight	430g	430g	430g	475g	430g	430g	475g

Specification

PRODUCT IMAGING



F350D



F650D

Detector	384x288,12μm	640x512,12μm
Frame Rate	50	50
NETD	<18mk	<18mk
Lens	25mm/50mm	25mm/50mm
Field of View	10.5x7.9/5.3x4	17.5x14/8.8x7
Detection Range	2600	2600
Digital Zoom	1X/2X/4X	1X/2X/4X/8X
Storage	32G	32G
Operating Temperature/Humidity	-20°C-55°C,90%	-20°C-55°C,90%
Dimension	217x64x64(mm)	217x64x64(mm)
Weight	595g	595g

Thermal Imaging Monoculars

FORESIGHT LRF SERIES



EXQUISITE STRUCTURAL DESIGN



Support Taking Photos and Videos

Connect to ULIRVISION Insights via WIFI for remote control, real-time image and video transmission, and easier sharing.



INSIGHTS
APP



Range up to
1200m



Laser Ranging 1200m

Measure distant targets more easily than ever before, achieve fast and precise positioning, and enjoy the pleasure of locking in.

Automatic Anti-burn Protection

When the temperature of the target is too high, the shutter will automatically close to protect the detector.



Specification

Product Imaging



FL325



FL335



FL625



FL635

Detector	384x288,12μm	384x288,12μm	640x512,12μm	640x512,12μm
Frame rate	50Hz	50Hz	50Hz	50Hz
NETD	< 18mK	< 18mK	< 18mK	< 18mK
Lens	25mm(F1.0)	35mm(F1.0)	25mm(F1.0)	35mm(F1.0)
Field of View	10.5x7.9	7.5x5.6	17.5x14	12.5x10
Detection Range	1280m	1800m	1280m	1800m
Digital Zoom	1X/2X/4X	1X/2X/4X	1X/2X/4X/8X	1X/2X/4X/8X
Storage	32G	32G	32G	32G
Operating Temperature/Humidity	-20°C~55°C,90%	-20°C~55°C,90%	-20°C~55°C,90%	-20°C~55°C,90%
Dimension	150x42x82(mm)	150x42x82(mm)	150x42x82(mm)	150x42x82(mm)
Weight	430g	430g	430g	430g

Countries and Regions Served



It has established extensive cooperation with more than 30 countries around the world
Temperature measurement products are distributed in Asia, Africa, South America, North America, Oceania

A photograph of two business people shaking hands, overlaid with a semi-transparent blue filter. The text is written in white, bold, sans-serif font on the left side of the image.

**Treat each other
sincerely
Win-win cooperation**