

# CinchSeal®

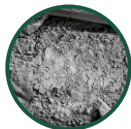
Leak-Free | Maintenance-Free | Reliable



Food Processing



Lithium-Ion Battery



Cement & Gypsum



Gold & Mining



Vitamin & Supplement



Chemicals



Cosmetics



Wastewater Treatment



Pharmaceutical



Pulp & Paper

Engineered Shaft Sealing Solutions for a Cleaner, Safer and More Efficient Industry

*"CinchSeal is the ideal sealing solution for mixers, blenders, screw conveyors, dryers, cookers, pug mills, bucket elevators, rotary air valves, extruders."*



# OUR MISSION

Our mission is simple: to provide the perfect seal for any machine, regardless of the complexity of the application. Whether you need a customized or standard solution, we have the expertise to deliver seals that are exceptionally durable and can withstand extreme conditions. Whether you need to seal highly abrasive materials or ultra-sensitive foods, CinchSeal is always the right choice.



# BENEFITS



## COST-EFFECTIVE

Factors such as reduced product waste, unplanned maintenance costs, downtime, and the prevention of premature bearing failures and shaft damage lead to significant savings and quick amortization.



## FAST RETURN ON INVESTMENT (ROI)

Switching to CinchSeal reduces ongoing costs and significantly lowers avoidable expenses.



## SPLIT DESIGN

Allows for quick and hygienic cleaning as well as easy replacement of internal parts when they reach their wear limit, significantly simplifying maintenance.



## NO SHAFT DAMAGE

CinchSeal's unique design eliminates any risk of damaging rotating shafts, unlike mechanical packings and lip seals.



## HEALTH & SAFETY

Prevents the escape of powder and dust, which can cause health risks, unsafe working conditions, and explosion hazards.



## FOOD & HYGIENE CERTIFIED

CinchSeal meets the highest hygiene and food safety standards and is certified according to FDA, NSF/ANSI/3-A 14159-1:2002, Regulation EC No. 1935/2004, and USDA guidelines.



## RUNOUT COMPENSATION

Can handle shaft runout of up to 6.35 mm without losing the seal to the shaft.



## MAINTENANCE-FREE

Most of our seals are designed to be rebuilt using a cost-effective repair kit.

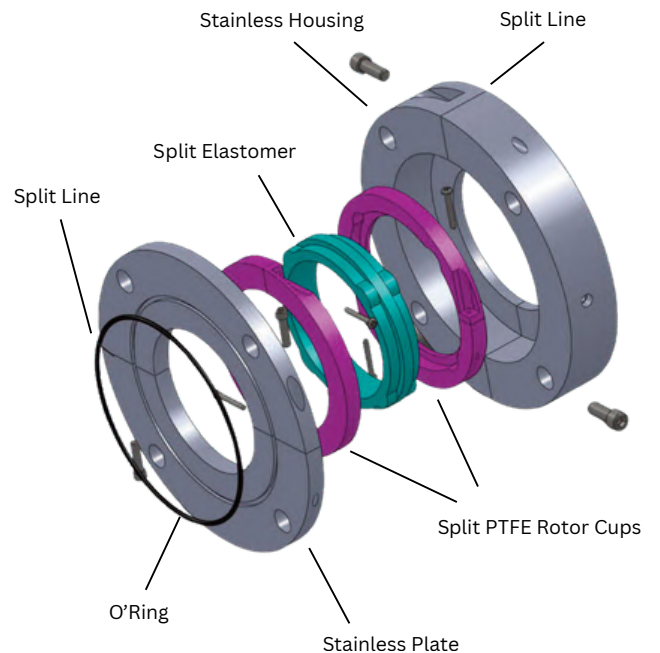


## ATEX CERTIFIED

CinchSeal is ATEX certified for use in explosive atmospheres.

# OUR SEAL DESIGN

Our seals are made from FDA-approved components, including a stainless steel housing, two rotor cups, and a silicone elastomer. The elastomer is molded to a size slightly smaller than the shaft to create an interference fit, sealing the shaft and preventing material passage. This tight fit also drives the two rotor cups, which rotate and press against the stationary stator plates, forming the primary seal that prevents product leakage.



How does the Seal work?



# OUR PRODUCTS

At CinchSeal, every sealing solution we provide is built around your process, your equipment, and your performance requirements.

We don't believe in one-size-fits-all - From material selection and shaft size to operating conditions and regulatory requirements (FDA, ATEX, CE) - our team works closely with you to deliver a sealing system that ensures maximum reliability, hygiene, and uptime.

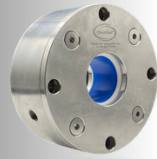


## Airless Rotary Face Seal

**Face seals are airless seals** that don't require purging air, making them ideal for environments where air supply is limited or could cause contamination. They're used in mixers, blenders, agitators, and similar rotating equipment to prevent leaks and ensure cleanliness.

Made of two flat faces pressed by a spring, they spin with the shaft for a tight, reliable seal. Suitable for food, chemical, pharma, and wastewater industries, they boost reliability and cut maintenance costs.

**Specs:**  
Max Speed: 1.3 m/s  
Max Temp: 175°C (standard)

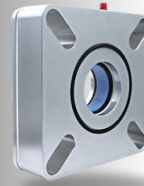


## High Speed Chopper Seal

**Chopper seals** are built for high-speed shafts in choppers used in agriculture, wastewater, and food processing. They handle abrasives, solids, and powders without damaging the shaft, unlike traditional lip seals.

Made from tough, corrosion-resistant materials, they self-adjust with shaft movement, are easy to install, and need little maintenance—cutting costs and boosting uptime.

**Specs:**  
Max Speed: 3600 rpm (up to 10 min)  
Max Temp: 175°C (standard)

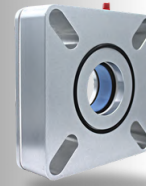


## 7520 CEMA Rotary Shaft Seal

**7500 Series rotary shaft seals** feature a solid FDA-approved silicone elastomer, built for high-temp use up to 200°C. **The 7520 model** is ideal for slurries and abrasive materials.

The elastomer is molded for a tight interference fit on the shaft, creating a reliable seal and driving two rotating "rotor cups." These press against stationary "stator plates" to form the primary seal. An air purge (0,3 - 0,5 bar above vessel pressure) ensures a secure, leak-free seal.

**Specs:**  
Max Speed: 1.2 m/s  
Max Temp: 200°C



## 7550 Powder & Bulk CEMA Rotary Shaft Seal

**7500 Series rotary shaft seals** use a solid FDA-approved silicone elastomer rated up to 200°C. **The 7550 model** is optimized for most powder applications.

The elastomer is molded smaller than the shaft for a tight interference fit, sealing the shaft and driving rotating "rotor cups." These press against stationary "stator plates" to form the main seal. An air purge (0,3 - 0,5 bar above vessel pressure) helps maintain a secure, leak-free seal.

**Specs:**  
Max Speed: 1.2 m/s  
Max Temp: 200°C

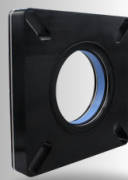


## 7620 Large Equipment Aluminum Rotary Shaft Seal

**7600 Series rotary shaft seals** are maintenance-free aluminum seals for larger shafts (100mm to 150mm), ideal for screw conveyors, bucket elevators, and bulk handling equipment.

**The 7620 model** features a solid clear coat aluminum housing, anodized aluminum rotor cups, and solid PTFE stator plates. All components, including repair kits, are built for durability in heavy-duty applications.

**Specs:**  
Max Speed: 1.2 m/s  
Max Temp: 200°C

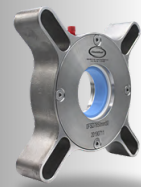


## 7650 Large Equipment Aluminum Rotary Shaft Seal

**7650 Series rotary shaft seals** feature a solid aluminum housing with split internal components, allowing for easy repairs without removing the housing—ideal for pillow block bearing setups.

Split mineral-filled PTFE rotor cups serve as the sacrificial wear parts. The repair kit includes a split elastomer and two split rotor cups, making rebuilds fast and convenient without disturbing bearings, gearboxes, or motors.

**Specs:**  
Max Speed: 1.2 m/s  
Max Temp: 200°C

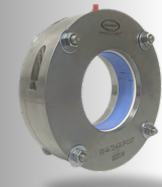


## 7850 Rugged Split Stainless Rotary Shaft Seal

**7800 Series rotary shaft seals** are 316 stainless steel, self-adjusting, and maintenance-free—ideal for screw conveyors in food, pharma, and chemical industries.

They seal dry and slurry materials, won't damage shafts, and use 30% less power than rope packing. Designed for CEMA equipment, they handle axial runout and shaft growth. Purged with air or silicone grease (0,3 - 0,5 bar).

**Specs:**  
Max Speed: 1.2 m/s  
Temp Range: -45.5°C to 200°C



## 9700 Sanitary Split Rotary Shaft Seal

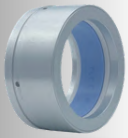
**9700 Series rotary shaft seals** are fully stainless steel, FDA-compliant, and split—designed for easy installation and cleaning. Ideal for food, spice, cheese, pharma, and chemical industries needing hygienic, caustic-washdown-ready components.

Easily replaces mechanical packing in mixers, blenders, and dryers. Designed for long service life and quick ROI, with low-cost rebuild kits for regular sanitation.

**Specs:**  
Max Speed: 1.2 m/s  
Max Temp: 200°C

**Suitable Materials:** Powders, Metals, Slurries, Plastics, Sludges, Food Processing

**Equipment Compatibility:** Mixers, Conveyors, Blenders, Cookers, Agitators, Rotating Equipment

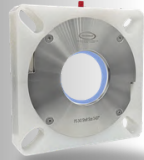


### Cartridge Seal

**Cartridge Seals** are custom mechanical seals for rotary air locks and screw conveyors, replacing lip and packing seals in drive adapter plates (e.g, Dodge, Falk).

With a max temp of 100°C, they mount easily to adapter plates, prevent leaks, and reduce wear on the drive assembly. These air-purged metal seals require tapping the housing for standard pipe thread.

**Specs:**  
Max Speed: 1.2 m/s  
Max Temp: 100°C

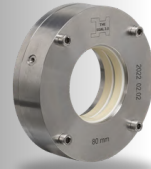


### Poly Split CEMA Seals

**The Poly Split (PS)** CEMA rotary shaft seal is maintenance-free, designed for screw conveyors and mixing/blending equipment. Made from polypropylene and stainless steel, it handles dry powders and slurries in food, pharma, and chemical industries.

The seal is rebuildable with low-cost repair kits and accommodates 6,35 mm radial shaft runout.

**Specs:**  
Max Speed: 1.2 m/s  
Max Temp: 200°C



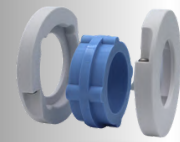
### The Seal 2.0®

**The Seal 2.0** is a high-performance, maintenance-free rotary shaft seal designed for long-term use across European industries. Its robust housing ensures a secure fit, while the precision endplate delivers reliable sealing.

At its core, two innovative rotor cups—connected by a durable ring—allow for dual-use functionality: simply rotate after the first cycle and reuse, with no repair kits or replacements needed.

**Specs:**  
Speeds up to 1,2 m/s  
-40°C to +120°C Operating Range

**Made in Germany!**



### Repair Kit

**Our rotary shaft seal repair kit** includes all the essential replacement components needed to maintain optimal sealing performance and extend the life of your CinchSeal products. Designed for every type of CinchSeal, the kit ensures your equipment stays leak-free, compliant, and low-maintenance.

**Each kit features:**

- A high-performance FDA-approved silicone elastomer,
- Enclosed between two durable PTFE rotor cups.

Our repair kits offer a quick, cost-effective solution to minimize downtime and keep operations running smoothly.

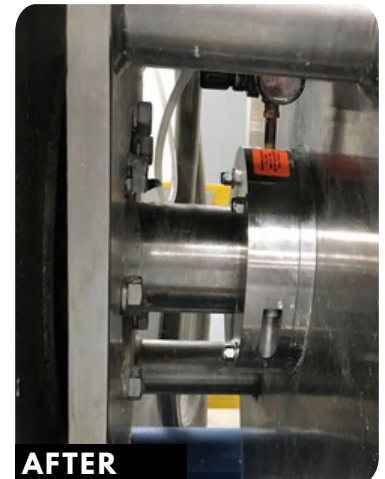
**Suitable Materials:** Powders, Metals, Slurries, Plastics, Sludges, Food Processing

**Equipment Compatibility:** Mixers, Conveyors, Blenders, Cookers, Agitators, Rotating Equipment

With over **30 years of experience**, CinchSeal provides premium local support throughout Europe—ensuring OEMs and end users get expert service wherever their equipment operates. 



**BEFORE**



**AFTER**

Your Trusted **Contact in Europe:**



**CinchSeal Europe GmbH**  
Buddestrasse 11  
32547 Bad Oeynhausen  
Germany

[www.cinchsealeurope.de/](http://www.cinchsealeurope.de/)  
+49 5731-9819072  
[info@cinchsealeurope.de](mailto:info@cinchsealeurope.de)

