



Piesia Electronic · Introduction

Shenzhen Piesia Electronic Technology Co., Ltd. **Was established in 2009**

SHENZHEN · CHINA
2025.01

Contents

1

Introduction. PIESIA

2

R&D. PIESIA

3

Workshop and supporting equipment

4

Product series and applications





01

Introduction
. PIESIA

About. PIESIA

Establishment and Product Application. PIESIA

Shenzhen Piesia Electronic technology Co., Ltd was established in 2009 and is a national high-tech enterprise dedicated to the research and development, production, sales, and after-sales service of various industrial control mother- boards, complete machines, computers, and related products. The product is widely used in various fields such as industrial automation, communication equipment, power equipment, network security, smart transportation, video surveillance, healthcare, self-service terminals, storage devices, digital signage, in car computers, 3C applications, etc.

Venue and personnel

Our company has its own factory building of more than 8000 square metres. Our company has more than 180 employees, including more than 30 R&D team.

Supporting equipment

From product development and design, supply chain management, incoming material control, process control, product delivery to after-sales service. We can produce industrial mainframe computer, tablet PC, computer motherboards, etc. about 30,000 units/month. Equipped with X-RAY detector, AOI, SPI testing equipment, as well as product aging, high and low temperature, vibration, drop, secondary element, life, key life, 4G/5G and other testing equipment.



OEM/ODM Provide product research and development design and outsourcing services

Development history.PIESIA



Obtain relevant qualifications

Passed ISO9001 quality management certification and 3C certification .

Culture and qualifications. PIESIA

Corporate Vision



Consolidate the wisdom of the Internet of Things

Corporate values



Integrity and Innovation Assistance
High quality, heartfelt and win-win

Corporate Mission



Be the most trusted professional computer product
Provide the most professional technical services
Becoming a company that formulates industry computer standards

15 Years OEM/ODM



Partial partners. PIESIA



intel®



安擎®
NGINETECH



和利时
HollySys



SANGFOR
深信服科技



中国航天科工集团公司



浪潮
inspur



超越申泰



紫光恒越
UNISYUE TECHNOLOGIES



SUPERCLLOUD
中国云计算服务器第一品牌




飞腾
PHYTIUM



Great Wall®
长城

Complete Chain. PIESIA

01



Team

HW、 SW、 BIOS、 LAYOUT、 ID、 MD、 SIT etc


02



Manufacturing (SMT)

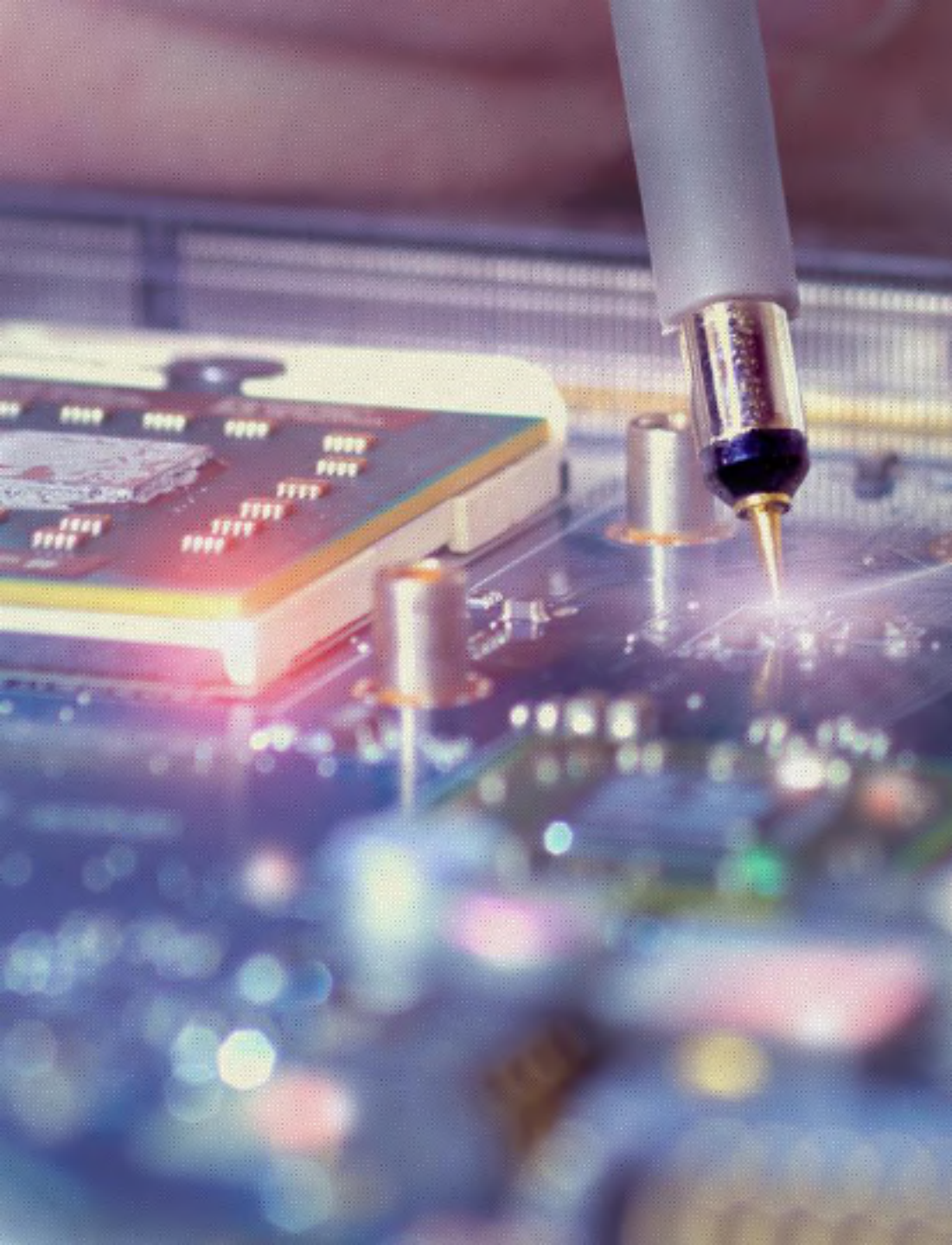
2 high-end SMT and assembly production lines, MES intelligent system with 24-hour response speed

03



Supply Chain(Component)

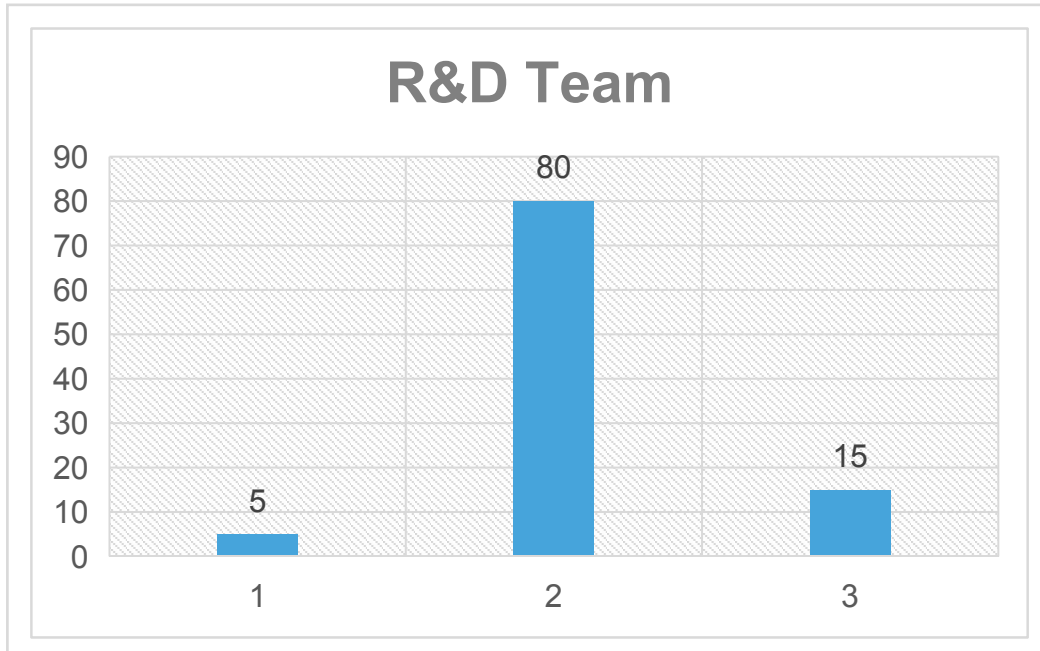
Ability to explore resources and control costs; 24-hour fast response speed



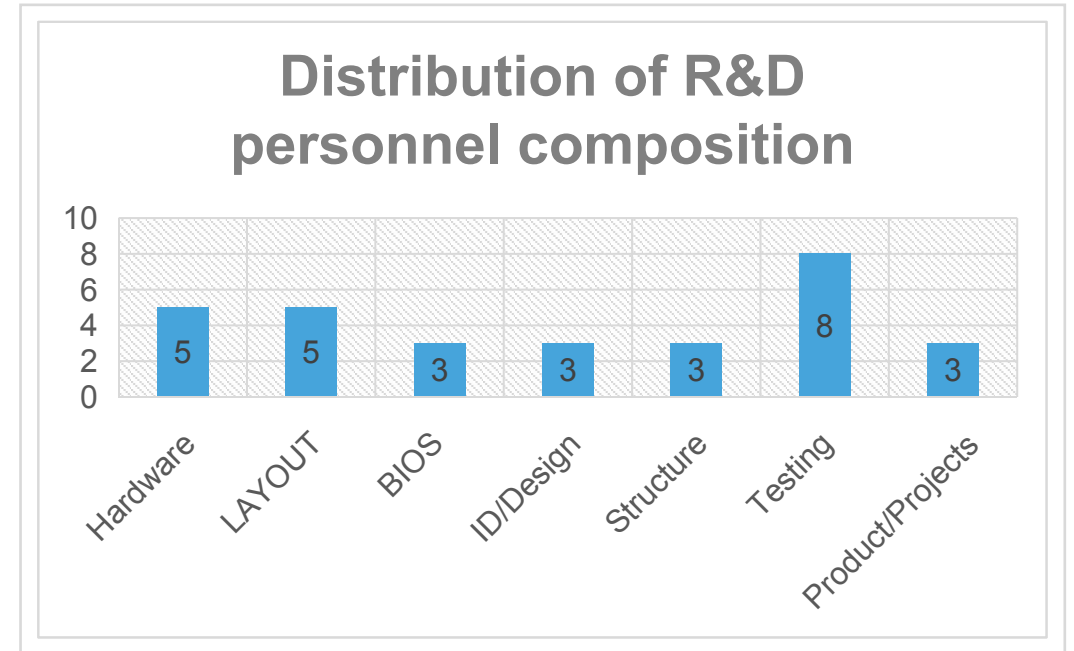
02

R&D. PIESIA

Composition of R&D personnel. PIESIA



Educational distribution of R&D personnel
5% for graduate students, 80% for undergraduate students, and 15% for associate degrees



Distribution of R&D personnel composition 30 people in total: 5 for hardware, 5 for layout, 3 for BIOS, 3 for ID/Design, 3 for structure, 8 for testing, and 3 for product projects

Research and development of supporting equipment-01. PIESIA



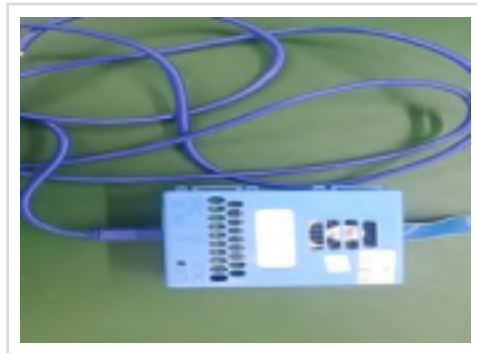
High speed signal testing



Low speed signal test



High speed signal testing



Intel platform debugging and testing



Multiple models for high-speed signal testing



Intel CPU performance testing

Research and development of supporting equipment-02. PIESIA



High and low
temperature testing
machine



Static electricity test



Packaging vibration
testing machine



Drop test / vibration
test

Research and development of supporting equipment-02. PIESIA



High purity 99.9% nitrogen generator



X-RAY Detector



YAMAHA High-speed surface mount machine



03

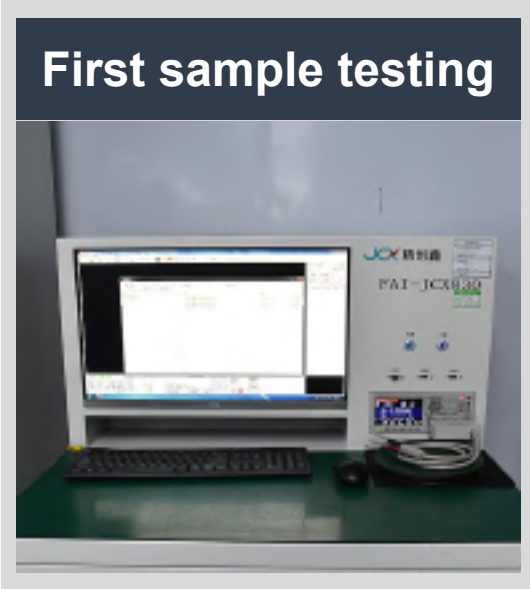
Workshop supporting
equipment. PIESIA

SMT Workshop supporting equipment-01. PIESIA



Item	Qty/Hr	Lines	Qty/D	Qty/M
M/B	60	2	1200 Pcs	31200 Pcs

SMT Workshop supporting equipment-02. PIESIA



Item	Qty/Hr	Lines	Qty/D	Qty/M
M/B	60	2	1200 Pcs	31200 Pcs

Assembly workshop supporting equipment. PIESIA



Workshop - 01

Production line



Workshop - 02

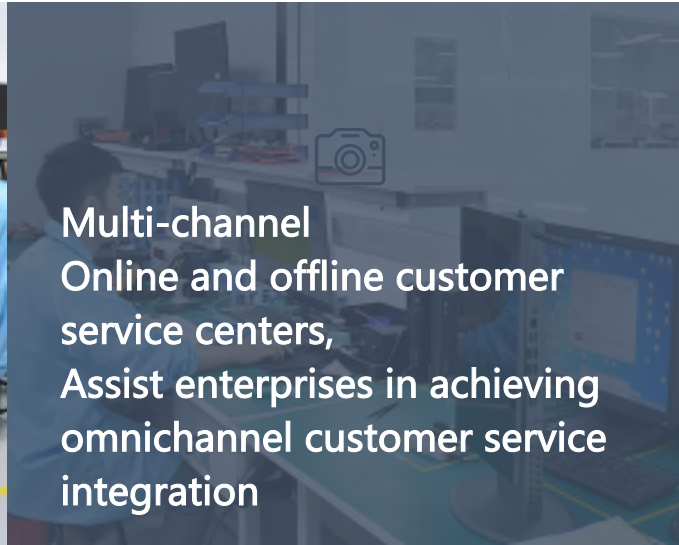
Test

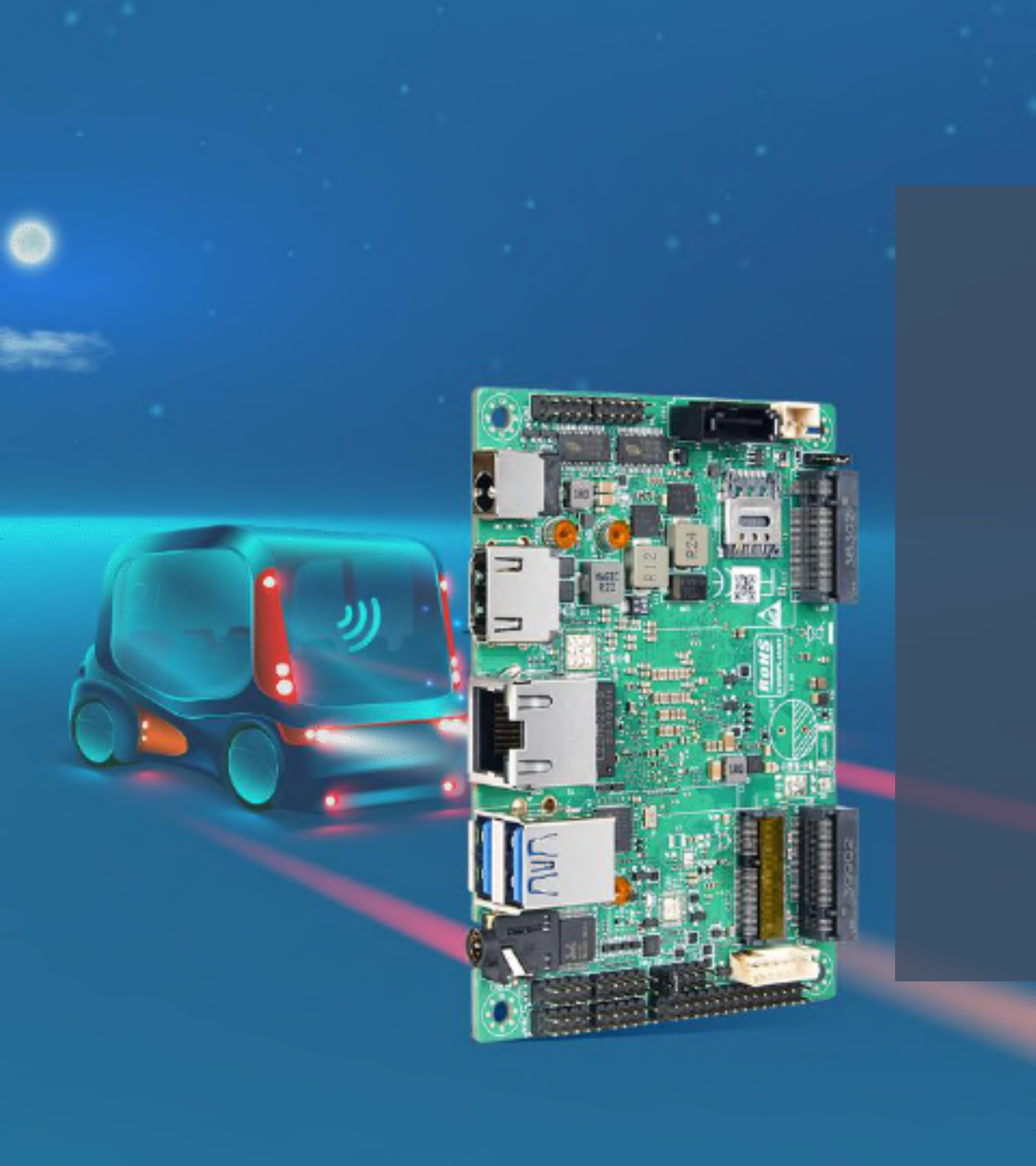


Workshop - 03

DIP tin furnace

After sales service support and equipment. PIESIA





04

Product series
and applications
. PIESIA

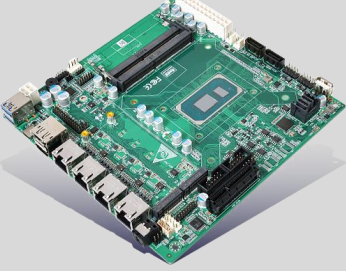
Overview of Product Series. PIESIA



NUC / NANO
Motherboard



2.5 / 3.5 inch
Motherboard



ITX
Motherboard



Z-3.5 inch
Motherboard



Industrial control
Motherboard



NUC/NANO Host



Network
Security Host



Embedded Host



OPS Commercial
Display Host



Industrial
Tablet

NUC / NANO • Motherboard Series 「Partial Products」

Overview

- **NUC Motherboard:** Compact size, powerful performance, rich interface configuration, high efficiency, low power consumption
- **NANO Motherboard:** Suitable for environments with limited space
- Supports WIFI/4G/5G/Bluetooth, expansion, LVDS/eDP



Model: TL500CA

- Support Intel 11th Tiger Lake-U Series
- 2*DDR4 SO-DIMM, Max up to 64GB
- Size: 100x100 mm



Model: AD600CA

- Support Intel Alder Lake-U/-P Series
- 2*DDR5 SO-DIMM, Max up to 64GB
- Size: 100x100 mm



Model: UT100CA

- Support Intel Core Ultra Series
- 2*DDR5 SO-DIMM, Max up to 96GB
- Size: 100x100 mm



Model: UT100NA6L

- Support Intel Core Ultra Series
- 2*DDR5 SO-DIMM, Max up to 96GB
- Size: 120x120 mm



Model: AD600NA6L

- Support Intel 12~13th-U/-P Series
- 2*DDR5 SO-DIMM, Max up to 64GB
- Size: 120x120 mm

Application

NUC Motherboard: Home, office, embedded systems [smart home, industrial control], industrial applications, etc

NANO Motherboard: Special applications such as automation, medical equipment, safety equipment, etc

Partial pictures of the company



2.5 / 3.5 inch • Motherboard Series 「Partial Products」

Overview

- **2.5 inch Motherboard:** Compact devices, such as laptops and embedded systems, are small, lightweight, and easy to install
- **3.5 inch Motherboard:** Multiple expansion interfaces, customizable according to different needs
- Supports WIFI/4G/5G/Bluetooth, expansion, LVDS/eDP



Model: UT1002A

- Support Intel Core Ultra Series
- 1* LPDDR5, Max up to 16GB
- Size: 100x72 mm



Model: AD742A

- Support Intel Alder Lake-N Series
- 1* LPDDR5, Max up to 16GB
- Size: 100x72 mm



Model: UT1003AW

- Support Intel core Ultra-U/H Series
- 2*DDR5 SO-DIMM, Max up to 96GB
- Size: 146x102 mm



Model: RP7003AW

- Support Intel Core 12 ~ 13th-U/-P Series
- 2*DDR5 SO-DIMM, Max up to 64GB
- Size: 146x102 mm



Model: AD743AW

- Support Intel 12th Alder Lake-N Series
- 1*DDR5 SO-DIMM, Max up to 16GB
- Size: 146x102 mm

Application

2.5 inch Motherboard: Artificial intelligence, Internet of Things, emerging technology applications, industrial control systems, and medical equipment, etc

3.5 inch Motherboard: Industrial automation equipment, such as factory robot control, logistics equipment control, and other small computer devices or specific applications

Partial pictures of the company



ITX • Motherboard Series 「Partial Products」

Overview

- The motherboard has a compact organizational structure and is suitable for small consoles, with good performance in low power consumption and heat dissipation, ITX motherboard is suitable for long-term operation and limited space environments
- Supports WIFI/4G/5G/Bluetooth, expansion, LVDS/eDP



Model: TOP800B

- Support Intel Core Ultra Series
- 2*DDR5 SO-DIMM, Max up to 96GB
- Size: 170x170 mm



Model: TOP500B

- Support Intel 11th Tiger lake-U Series
- 2*DDR4 SO-DIMM, Max up to 64GB
- Size: 170x170 mm



Model: TOP642C

- Support Intel Elkhart Lake Series
- 2*DDR4 SO-DIMM, Max up to 32GB
- Size: 170x170 mm



Model: TOP30D

- Support Intel Alder Lake-N Series
- DDR4 SO-DIMM, Max up to 16GB
- Size: 170x170 mm



Model: TOP600B

- Support Intel 12-13th -U/-P Series
- 2*DDR5 SO-DIMM, Max up to 64GB
- Size: 170x170 mm

Application

Highly integrated small-scale computer systems for industrial control, TV cabinets, home theaters, computers, smart homes, and other small-scale equipment

Partial pictures of the company



Z-3.5 inch • Motherboard Series 「Partial Products」

Overview

- Multiple extension interfaces can be customized according to different needs to meet specific application functional requirements. Usually focuses on low-power design to improve the efficient performance of equipment
- Supports WIFI/4G/5G/Bluetooth, expansion, LVDS/eDP



Model: AD600Z3AW

- Support Intel 12 ~ 13th -U/-P Series
- 2* DDR5 SO-DIMM, Max up to 64GB
- Size: 155x117 mm



Model: TL500Z3AW

- Support Intel 11th Tiger lake-U Series
- 1* DDR4 SO-DIMM, Max up to 48GB
- Size: 155x117 mm



Model: WU410Z3AW

- Support Intel 10th Comet Lake-U Series
- 1* DDR4 SO-DIMM, Max up to 48GB
- Size: 155x117 mm



Model: KU250Z3AW

- Support Intel 10th Comet Lake-U Series
- DDR4, Max up to 16GB
- Size: 155x117 mm



Model: AP42Z3A

- Support Intel Apollo lake Series
- DDR4, Max up to 8GB
- Size: 155x117 mm

Application

Industrial sector, intelligent transportation, medical equipment, smart homes, drones, etc

Partial pictures of the company



Industrial • Motherboard Series 「Partial Products」

Overview

- **Core motherboard:** System computing and control functions. Adopting high-performance processors
- **Industrial motherboard:** High stability, reliability, and durability to meet special needs in industrial environments
- Supports WIFI/4G/5G/Bluetooth, expansion, LVDS/eDP



Model: TL500CM



Model: GN41EA



Model: PIMB-Q670C



Model: PIMB-Q370C



Model: PIMB-H610C

- Support Intel 11th Tiger Lake Celeron Core board Intel 12th Alder Lake Series
- Size: Core board: 125x95 mm
Expansion board: 210x150 mm

- Support Intel Gemini Lake/Gemini Lake-R Series
- Size: Core board: 95x95 mm
Expansion board: 244x244 mm

- Support Intel 12~13th Pentium /Celeron Series
- 4*DD5 U-DIMM, Max up to 128GB
- Size: 244x305 mm

- Support Intel LGA1511 8-9th Series
- 4*DDR4 U-DIMM, Max up to 128GB
- Size: 244x305 mm

- Support Intel 12 ~ 13th Series
- 4*DDR4 SO-DIMM, Max up to 128GB
- Size: 244x244mm

Application

Core motherboard: In electronic devices, such as microcontrollers and embedded development platforms
Industrial motherboard: Industries such as manufacturing, automation, healthcare, and energy

Partial pictures of the company



NUC / NANO • Host Series 「Partial Products」

Overview

- **NUC Host:** Compact size and powerful performance have wide applications in the commercial industry
- **NANO Host:** Low cost, centrally maintained environments such as enterprises, schools, etc
- Support multi screen display, VESA wall mounted, small size, multi specification interfaces, flexible application [single or dual network optional]
- Supports WIFI/4G/5G/Bluetooth, expansion, LVDS/eDP



Model: C-BOX-M4

- Support Intel Alder Lake-N Series
- Onboard DDR5, Max up to 16GB
- Size: 75x75x52mm



Model: U-BOX-M3

- Support Intel Core 12th Series
- 2*DDR5 SO-DIMM, Max up to 64GB
- Size: 114x114x48mm



Model: U-BOX-M4

- Support Intel Core Ultra Series
- 2*DDR5 SO-DIMM, Max up to 64GB
- Size: 114x114x48mm



Model: N-BOX-M1

- Support Intel Core 12th/13th Series
- 2*DDR5 SO-DIMM, Max up to 64GB
- Size: 139x130x56mm



Model: N-BOX-S5

- Support Intel Core 12th/13th Series
- 2*DDR5 SO-DIMM, Max up to 64GB
- Size: 235x175x52mm

Application

NUC Host: Professional applications such as home, office, embedded, smart home, industrial control, etc

NANO Host: Special applications such as automation, medical equipment, safety equipment, etc

Partial pictures of the company



Network Security • Host Series 「Partial Products」

Overview

- Monitor and defend against network attacks to ensure the security of network systems. Including intrusion detection vulnerabilities, malware detection and other functions, capable of real-time monitoring of the network
- Supports WIFI/4G/5G/Bluetooth, expansion, LVDS/eDP



Model: FA-6706S

- Support Intel 12~13th Series
- 2*DDR4 SO-DIMM, Max up to 64GB
- Size: 486x525x89mm



Model: FA-64U6E

- Support Intel Elkhart Lake Series
- 2*DDR4 SO-DIMM, Max up to 64GB
- Size: 483x370x445mm



Model: FA-6106S

- Support Intel 12~13th Series
- 2*DDR4 SO-DIMM, Max up to 64GB
- Size: 411x486x44mm



Model: FA-1106S

- Support Intel 6~7th Series
- 2*DDR4 SO-DIMM, Max up to 64GB
- Size: 411x486x44mm



Model: FA-50U6T

- Support Intel 11th generation Tiger Lake-U Series
- 1*DDR4 SO-DIMM, Max up to 48GB
- Size: 486x411x45mm

Application

Enterprise intranet, data center, cloud computing platform, etc. Deploying network security hosts can effectively enhance the network's security protection capabilities, preventing data leaks and DDoS attacks

Partial pictures of the company



Embedded • Host Series 「Partial Products」

Overview

- Featuring a small size, low power consumption, strong professionalism, and high reliability, with a fully metal enclosed design for scalability and a fanless design, equipped with a reliable power supply, diagnostic functions and fault self resetting, focusing on specific application industries
- Supports WIFI/4G/5G/Bluetooth, expansion, LVDS/eDP



Model: Q-BOX-A1

- Support Intel 12~14th Series
 - 2*DDR5 SO-DIMM, Max up to 64GB
 - Size: 264x188x262mm
- No expansion space/Four expansion booth



Model: Q-BOX-E10

- Support Intel Core Ultra Series
- 2*DDR5 SO-DIMM, Max up to 96GB
- Size: 130x193x75.8mm



Model: Q-BOX-E9

- Support Intel Alder Lake-N Series
- 1*DDR5 SO-DIMM, Max up to 16GB
- Size: 209x122x70.6mm



Model: Q-BOX-S5

- Intel 12~13th Series
- 1*DDR5 SO-DIMM, Max up to 16GB
- Size: 146x100x50mm



Model: Q-BOX-K1

- Intel 11 ~ 13th Alder Lake-P Series
- 1*DDR4 SO-DIMM, Max up to 64GB
- Size: 300x156x78mm

Application

Widely used in smart homes, smart robots, industrial automation, etc
Link with peripheral interactive devices through specific functional interfaces

Partial pictures of the company



OPS Commercial Display • Host Series 「Partial Products」

Overview

- Compact, lightweight, multifunctional, low-power, high-efficiency, open modular, easy to install and maintain
- **International standard size: 180*119*30mm**, **Domestic standard size: 180*195*30/42mm**
- Supports WIFI/4G/5G/Bluetooth, expansion, LVDS/eDP



Model: OPS196U

- Support Intel Core Ultra Series
 - 2*DDR5 SO-DIMM, Max up to 96GB
- International standard size



Model: OPS186U

- Support Intel Core 12th/13th Series
 - 1*DDR5 SO-DIMM, Max up to 32GB
- International standard size



Model: OPS121S

- Support Intel Core 12th/13th Series
 - 2*DDR4 SO-DIMM, Max up to 64GB
- Domestic standard size



Model: OPS118S

- Intel Core SkyLake -U Series
 - 2*DDR4 SO-DIMM, Max up to 64GB
- Domestic standard size



Model: OPS77-IOA Board

- 3*USB, 1*Line-OUT, 1*HDMI
- 1*2x5Pin RS232, 1*DP
- Size: 152x47mm

Application

Electronic education platform, interactive applications, digital media, self-service terminals, remote meetings, etc
Peripheral devices are used for connection and interactive applications, supporting multi screen display

Partial pictures of the company



Industrial Tablet • Host Series 「Partial Products」

Overview

- Safety and stability. Used for human-machine interface and production process control, resistant to harsh environments such as high temperature, low temperature, humidity, and vibration
- 10 point capacitive touch, front panel IP65 standard (all metal silver shell, fanless design)
- Support multi screen display, embedded and VESA wall mounted, flexible application
- Supports WIFI/4G/5G/Bluetooth, expansion, LVDS/eDP



Model: PPC-101A-C

- Intel Onboard Core 6 -11th Series
- 10.1 inch, 1280*800 Resolution
- Max up to 64GB(Select based on CPU)
- Size: 276x188x63.6mm



Model: PPC-150A-C

- Intel Onboard Core 6 -11th Series
- 15 inch, 1024*768 Resolution
- Max up to 64GB(Select based on CPU)
- Size: 370x294x71.6mm



Model: PPC-156A-C

- Intel Onboard Core 6 -11th Series
- 15.6 inch, 1920*1080 Resolution
- Max up to 64GB(Select based on CPU)
- Size: 410x260x69mm



Model: PPC-215A-C

- Intel Onboard Core 6 -11th Series
- 21.5 inch, 1920*1080 Resolution
- Max up to 64GB(Select based on CPU)
- Size: 540x336x71mm

Back I/O interface mode



Application

Various industrial scenarios, such as production line control, automotive production line control, etc., support multiple interfaces and module extensions

Partial pictures of the company





Piesia Electronic Shenzhen • CHINA



Welcome to PIESIA Electronic Guidance

Piesia Electronic

SHENZHEN · CHINA
2025.01