

A low-angle photograph of a modern glass skyscraper. The building's facade is composed of numerous rectangular glass panels. A large, three-dimensional logo is mounted on the building. The logo consists of the words 'KIN LONG' in a bold, sans-serif font, followed by the Chinese characters '坚朗' in a similar style. Below the main logo, there is a line of smaller Chinese text.

KIN LONG 坚朗

一切为了改善人类居住环境

Kinlong introduction and General Product Solution

www.kinlong.com

CONTENTS

01 Company Profile

02 Interior Decoration Solution

03 Door & Window Solution

04 Facade Envelop and Structure Solution

1.1 General Introduction



Established

in **2003**

Listed in SZSE
(Shenzhen Stock Exchange)

in **2016**

Stock Code:

002791

Construction Area

800,000 sqm

Employee

More than **11,000**

Sales & Service Offices

More than **700**

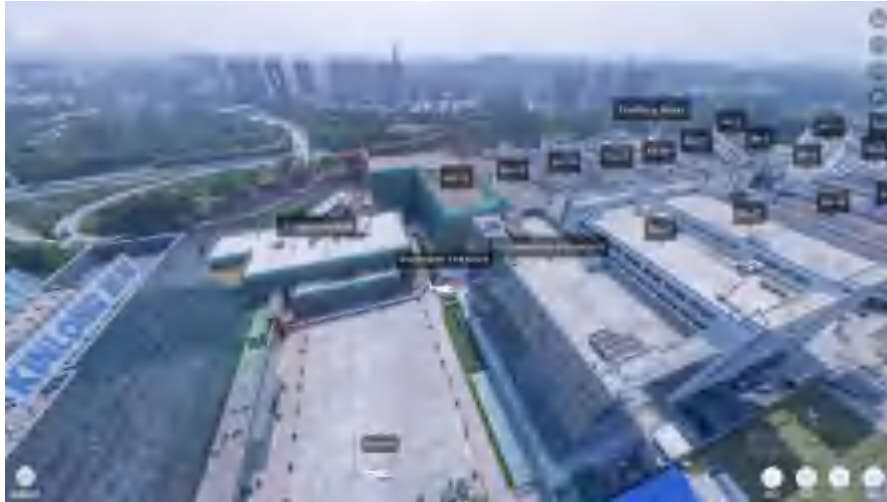
Branch & Subsidiary

More than **60**

Sub-Brands

More than **60**

1.3 Headquarter Industrial Zone



- 1.5 hour drive from Shenzhen Bao'an Airport
- 2 hour drive from Guangzhou Bai Yun International Airport
- 2 hour drive from HK International Airport

Company Address :

**No.3, Jian Lang Rd., Daping, Tangxia Town,
Dongguan City, Guangdong Province, China**

Zip: 523722



1.3 Headquarter Industrial Zone

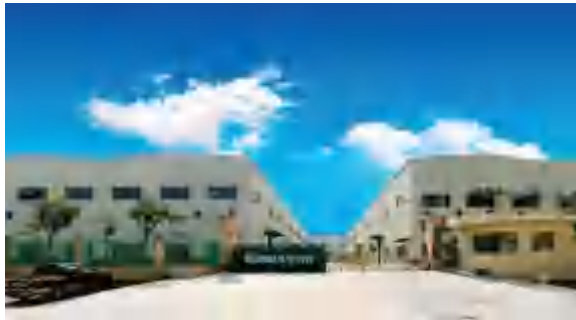
HQ FACTORY(I)



HQ FACTORY(II)



KINEX FACTORY



HENAN FACTORY



ZHONGSHAN FACTORY



A photograph of a modern building with a glass facade. The building is dark, and the sky is blue with some clouds. The logo 'KINLONG 坚朗' is prominently displayed on the top of the building. The logo consists of the word 'KINLONG' in blue capital letters and the Chinese characters '坚朗' in blue. The building's facade is made of dark glass panels, and some windows are visible. The overall image is a promotional shot for Kinlong, a company known for building accessories.

KINLONG 坚朗

the world's largest integrated supplier of building accessories

Residential Building Integration Solutions

Interior decoration products

D&W hardware



Wall and floor materials



Decorative ceilings



Cabinets



Pipe products



Kitchen supplies



Lock hardware



Waterproof materials



Elevator



Radiator



Bathroom integration



Door control hardware



Smart home integration



Balcony products



Secondary water supplying



Door and window energy-saving materials



Interior wall coating



Exterior wall products

Exterior wall coatings



Anchor system



Aluminum panel



Integrated thermal insulating wall panel

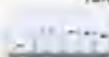


Smart Community products

Water park facility



Electric rail



Video intercoms



Monitoring system



Firefighting supplies



Parking lot integration



Sports and fitness amusement facilities



Landscape lighting



Electrical products

Wires and cables



Switches and sockets



Electric distributor box/cupboard



Ventilation Bathroom heater & air exchange fan



Rail Transit Integrated Solutions

Shield area (interval tunnel penetration)

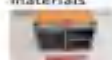
Electrical bracket



Anchor products



Waterproof materials



Embedded products



Segment anchoring bolts



Mechanical and electrical decoration (rail transit)

Wire and cables



Hanger shelf



Hanger & supportor



Electric distributor box/cupboard



Fireproof products



Sewage lifting equipment



Decoration of public areas (station access)

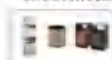
LED screens



Ceiling decoration



Stainless steel sheet metal



rod & cable



Point-fixed and curtain wall accessories



Post railing



ACP



Post railing & ticket booths



Aluminum panel



Screen Door



Lighting products



Bathroom integration



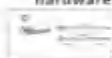
Accessible restroom



Security device



Lock hardware



Sports Building Integrated Solutions

Concrete structure hardware

Waterproof materials



Anchor products



Anchor Channels



Anchor plate



Space steel structure/roof structure

Cable & rod



Steel castings



Metal roof screws



Membrane structure products



Weak current projects

Wire and cables



Cable rack



Distribution box



Modular support system



Anti-seismic Modular support system



Fireproof products



Exterior wall products

Intelligent window controls



Aluminum panel



S.S cable & rod



D&W hardware integration



Sealing strips



Interior decoration products

Security device



Ceramic tiles



Sports flooring



Lock hardware



Bathroom products



Integrated ceilings



Switch sockets



Post railing



Door control hardware



Commercial water purifiers



Outdoor landscape

Garden landscape



Flood lighting



Artificial grass



Rubber runway



Commercial Complex Integrated Solutions

Construction foundation products

Waterproof materials



Municipal pipes



Modular support system



Anti-seismic Modular support system



Parking lot integration products

Intelligent parking lots



Floor coatings



Public area decoration products

Monitoring system



Electric rail monitoring



Office room equipments



Lifting Columns



Outdoor landscape bricks



Amusement facilities



Fire protection products



Rubber runway



Exterior wall products

Anchor channel and bolt



Building flood lighting



Aluminum composite panels



Aluminum panel



Integrated thermal insulation wall panel



Facade accessories



Exterior wall painting materials

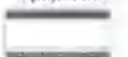


Transparent LED screens



Interior decoration products

Ventilation equipments



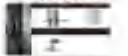
Automatic doors



D&W integration



Lock hardware



Electric sunshades



Bathroom partitions



Interior lighting



Bathroom hardware



Photoelectric glasses



Door control hardware



Top surface materials



Ceramic sanitary ware



Wall and floor materials



Commercial kitchen



Post railing



Bathing cabinet



KIN LONG

For Better Living

Hotel/Resort Scenario Integration Solutions

Interior construction

Automatic doors



D&W integration



Electric sunshades



Bathroom integration



Wall and floor materials



Lock hardware



Door control hardware



Stainless steel sheet metal



Indoor lighting



Movable Partition



Furniture



Pbst Railing



Commercial Kitchen Supplies



Exterior wall construction

Aluminum panel



ACP products



Anchor channel
Anchor bolt



Integrated thermal insulation sandwich panel



Facade fittings



Intelligent window control



Transparent LED screens



Exterior wall painting materials



Foundation construction products

Modular support system



Municipal pipes



Waterproof materials



Public area decoration products

Fire protection products



Hotel magt system



Monitoring system



Firefighting Supplies



Lifting Columns



Floor Series



Parking integration



Outdoor landscape



Water park facility



Ancillary products

Roof bar



Linen series



Furniture series



Disposable items



Decoration



Hotel room supplies



School/Kindergarten Scene Integration Solutions

Engineering products

Pipe products



Waterproof materials



Rubber Track



Lighting projects



Exterior wall coatings



Artificial grass



Wires and cables



Floor coatings



Modular support system



Stadium-related facilities



Recreation facility



Anti-seismic products



Intelligent window controls



Integrated thermal insulation wall panel



Ancillary products

Office supplies



Dormitory/classroom supplies



Laundry equipments



Firefighting Supplies



Sign boards



Reading booth



Stainless steel sheet products



Auditorium chair series



Door and window hardware

Gasket



Silicone glues



PU foam



D&W hardware



Interior products

Post railing



Door control hardware



Lock hardware



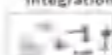
Shading products



Tile/wood floors



Bathroom integration



Heat radiator



Switch panels



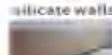
Toilet Partition



Aluminum panel



Calcium silicate walls



Interior lighting



Weak Current Integration

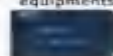
Lifting column



Campus broadcast



Smart school equipments



Precise air conditioner



Security protection system



Smart access



Integrated Solutions for Hospital Projects

Engineering products

Pipe
Floor coatings



Anchor
channel



Waterproof
materials



Anti-seismic
products



Thermal insulation
materials



Exterior wall
coatings



Floor
coatings



Integrated thermal
insulation wall panel



Modular support
system



Electric distributor
box



Anti-seismic Modular
support system



Sunshade
products



Customized
furniture



Bathroom
cabinet



Post
railing



Transparent
LED screen



Medical
equipment



Ward soft
furnishings



Bathroom
partitions



Indoor lighting



Lock
hardware



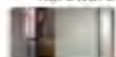
Wall and floor
materials



Medical
antibacterial board



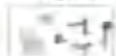
Door control
hardware



Automatic
doors



Bathroom
integration

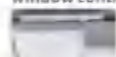


D&W curtain wall integration

D&W
integration



Intelligent
window control



Aluminum
panels



Fire-resistance
material



Fastener
& screws



Interior products

Ancillary products

Smart life with care



Smart security
protection



Smart clinic



Digital
Ward



Ancillary products

Firefighting
Supplies

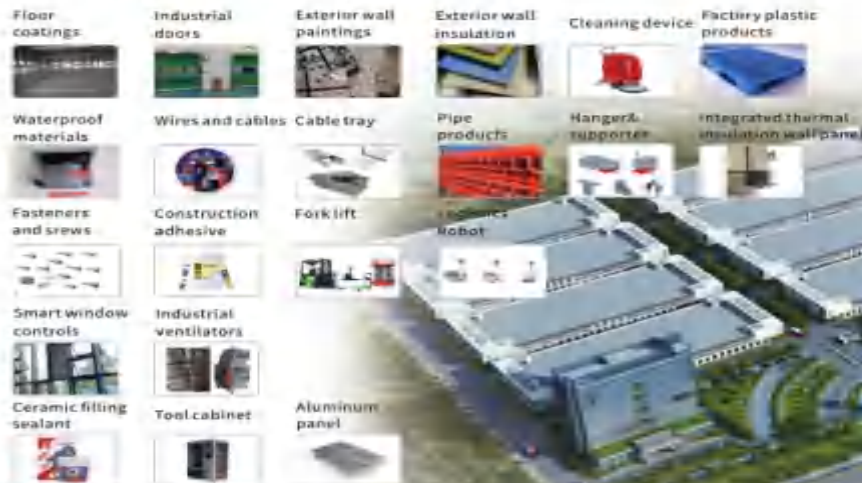


Air fresh system



Factory Integration Solutions

Factory section products



Park public area products



Office buildings and dormitory hardware



Other ancillaries



Interior products



Gardens Architecture Integration Solutions

Garden Construction Product Series



Green Product Series



Water and Electricity Product Series



Municipal Series Products



Maintenance Series Products



Smart Community Integration Solutions

A new management form for residential areas that integrates community services and equipment management on a unified platform, with interconnectivity of data and information.

Community access

Community AI
One-Face
Communication



Vehicle Barrier
System



Sidewalk Barrier
system



Elevator Control
System



Building Intercom
System



Community Safety

Video Surveillance
System



High Altitude
Parabolic System



Perimeter Alarm
System



Guard Patrol
System



Community Platform

Online
Payment



Intelligent
Property
Management



Integrated
Management
Platform



Smart Push
Screen



Community Life

Children's Home
Reminder System



Mosquito Killing
System



Background
Music System



Elder Care
System



Intelligent Power
Consumption
System



Smart Home Integration Solutions

Whole-house AI intelligence, minimalist operation, including convenience, comfort, safety, health and other smart home scenarios.



Smart Home Integrated Solutions--Five-Constant System



KIN LONG | **GRIWIND**
For Better Living

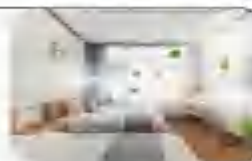
GRIWIND Hotel Five-Constant System – Empowering Brand Upgrades

Air Conditioning, Fresh Air, Humidification, Sterilization,
Odor Removal, Noise Removal

Hotel Types	Temperature	Humidity	PM2.5	CO ₂	TVOC
Star Hotels	✓	✗	✗	✗	✗
Four Seasons	✓	✓	✓	✓	✓

01

Room Air & Oxygen Circulation
(Improving Sleep Quality 100%)
24/7 Fresh Air Supply
CO₂ Concentration < 1000ppm
Good & Fresh Sleep Quality



02

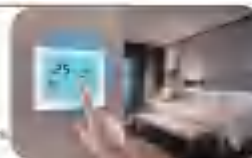
Temperature (Hot, Warm, Room Temperature, Cold) and Humidity (Dry, Humid) Control
Humidity (Preventing Mold Breeding) Control
Through 90% Humidity and 100% Humidity Control
Control Humidity Control System

Control Humidity Control System



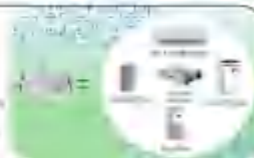
03

Smart Temperature & Humidity Control
Control System (Auto Control Air Flow)
Humidity Control (24°C)
Humidity Control (10%)
Smart Home Auto Control System (Auto Control)



04

All-in-One Device (Simple Operation, Easy to Use)
Features (Temperature, Humidity, CO₂ Air Quality, etc.)
Mobile App Control (Easy and Convenient)



Villa Scene



Hotel Scene

Five-Constant Comfort Home



Parking Lot Integration Solutions

Intelligent Weak Current

Park barrier



Parking Guidance



Charging Station



Automatic Door



Lighting



Monitor



Patrol



Supporting Facilities

Transportation Facilities



Safety Protection



Hardware and Building Materials

Stainless Steel Sheet products



Anchor Bolt



Hanger



Waterproof Materials



Pipe



Floor and Wall

Wall Coating



Floor coatings



1.4 Workshop & Equipment



**Precision Machining
Industry Leader**

◀ **Automatic cold bending
line for steel channel**

400T punching machine



**Plastic injection
central conveying
system**

**Integrated unit of
grinding & polishing**



1.4 Workshop & Equipment

Intelligent Production Line Improve Product Quality

Welding robot
Polishing robot
Automatic cold
rolling workshop



Automatic CNC
bending machine

Automatic spraying
production line



1.4 Workshop & Equipment



Automatic assembly machine

Laser pipe cutting machine

Floor spring automatic production line

Heavy profile machining center

12KW fiber laser cutting machine



1.5 Sales Service Network



700+ Sales Service Points

Abroad: 12+ subsidiaries, 30+ sales offices, 15+ warehouses

1.6 KINLONG Social Charity School



By the end of 2025, Kinlong had donated and built nearly 100 Social Charity Schools in underprivileged and remote areas in China and abroad. We are committed to continuing our contributions to education in the years to come.



4 schools in India
5 schools in Vietnam
2 schools in Thailand
1 school in Malaysia
1 school in Bangladesh
1 school in Indonesia
1 school in Sri Lanka
1 schools in Mexico

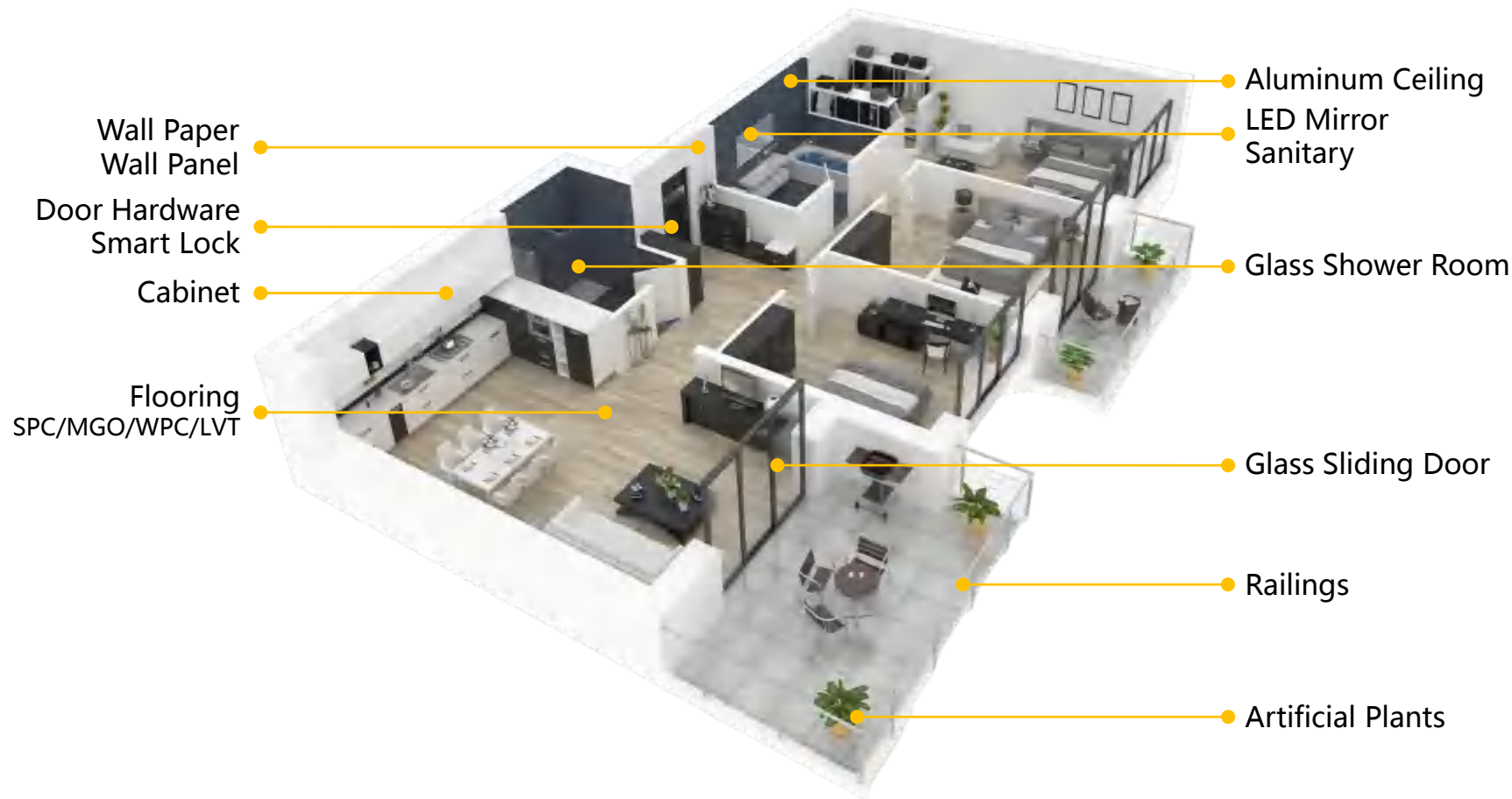
CONTENTS

01 Company Profile

02 Interior Decoration Solution

03 Door & Window Solution

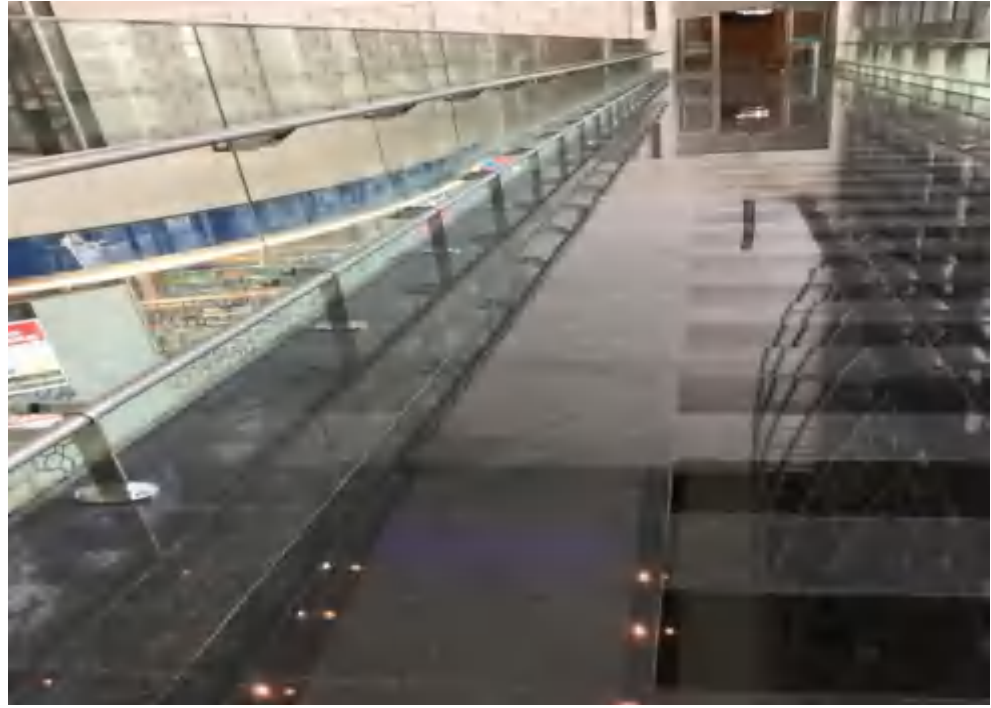
04 Facade Envelop and Structure Solution



Airport Project Muscat International Airport

Location: Muscat, Oman

Kinlong Products: SS Railings



Hotel Project JW Marriott Marquis Hotel

Location: Business Bay, Dubai

Kinlong Products: Bathroom fittings, Shower screen accessories



Hotel Project Mandarin Oriental, Muscat

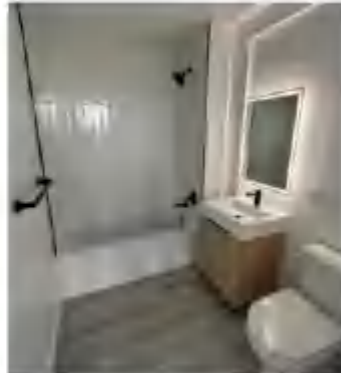
Location: Muscat ,Oman

Kinlong Products: Shower Fittings, Handrial



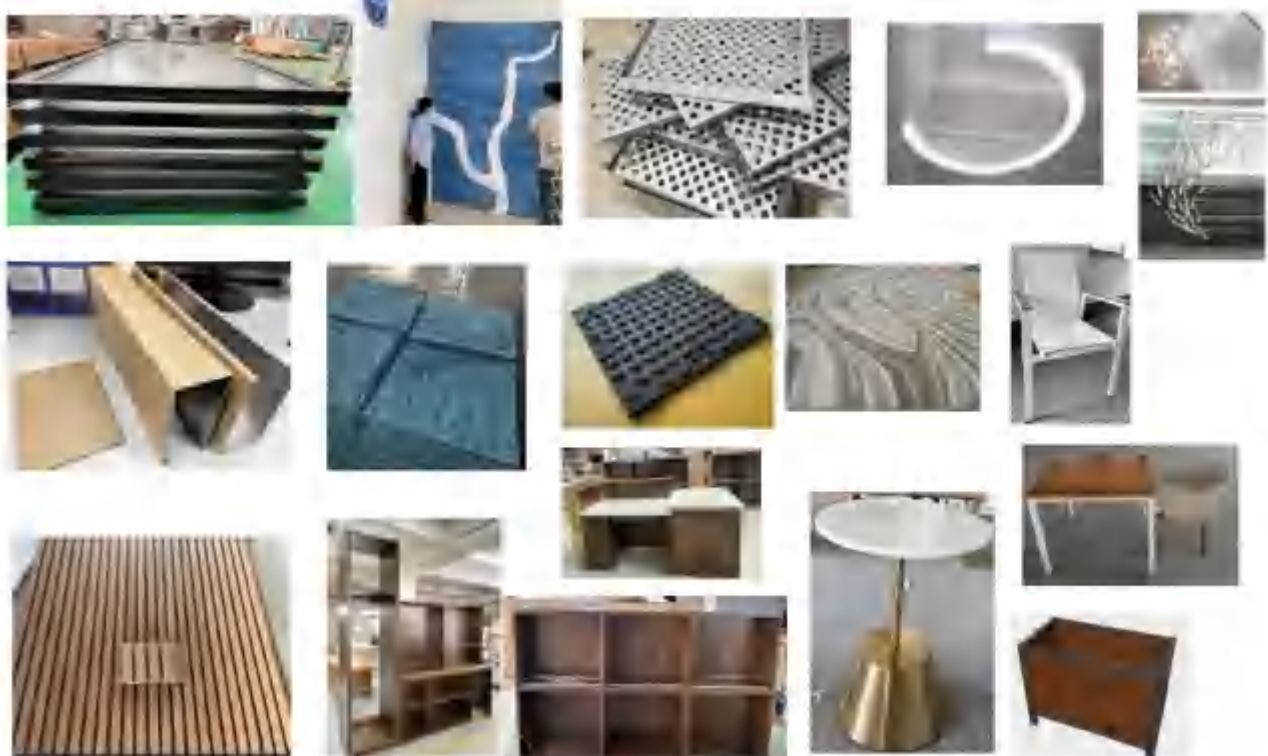
Apartment Project Astoria mix-used condo

Location: 3-11 27TH AVE, ASTORIA, NY 11102, US. Kinlong Products: SPC flooring; carpet; mirror; basin; glass railing system; HPL wall panel; outdoor WPC fence; door closer etc.



Apartment Project Davis Condo (Terra)

Location: New York, USA Kinlong Products: glass sliding door system, ceiling & wood wall panel, wall covering, carpet, Indoor & outdoor furniture, lightings etc.





Anti-theft hinge



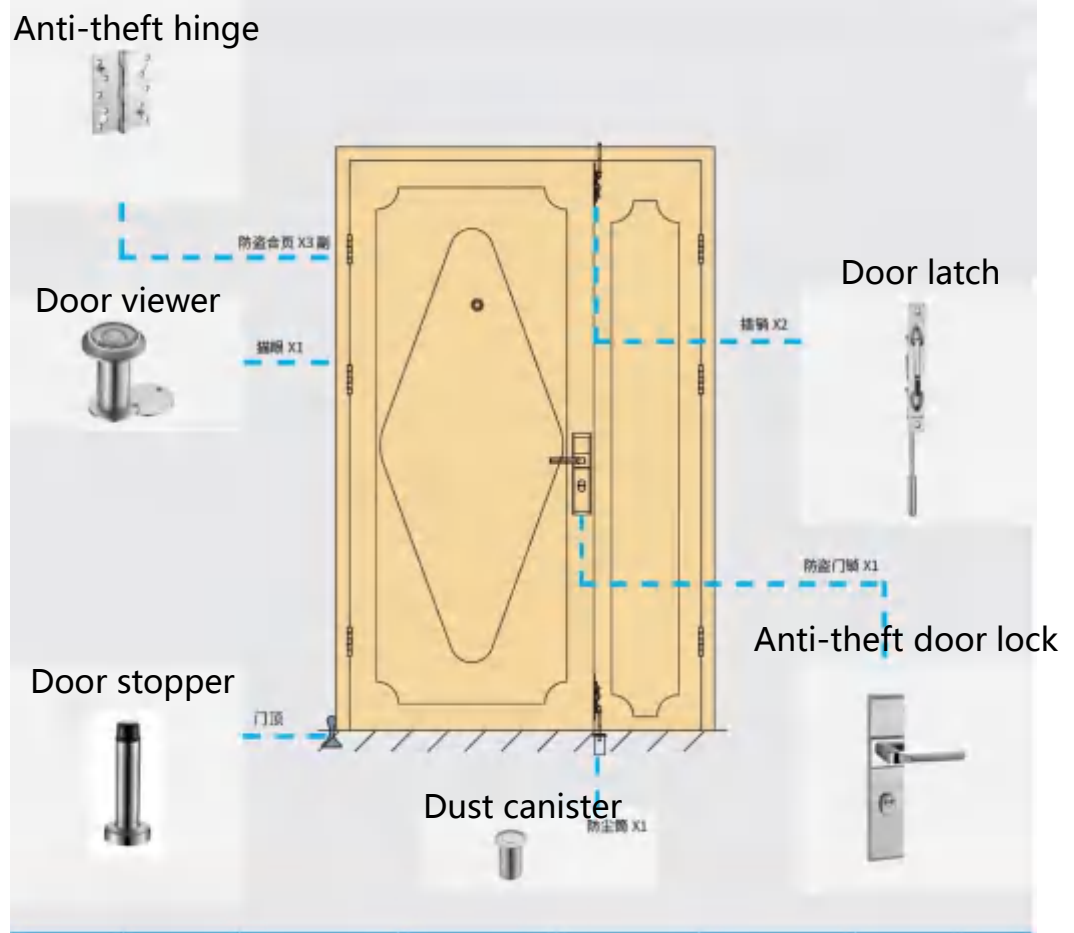
Door viewer



Door stopper



Dust canister



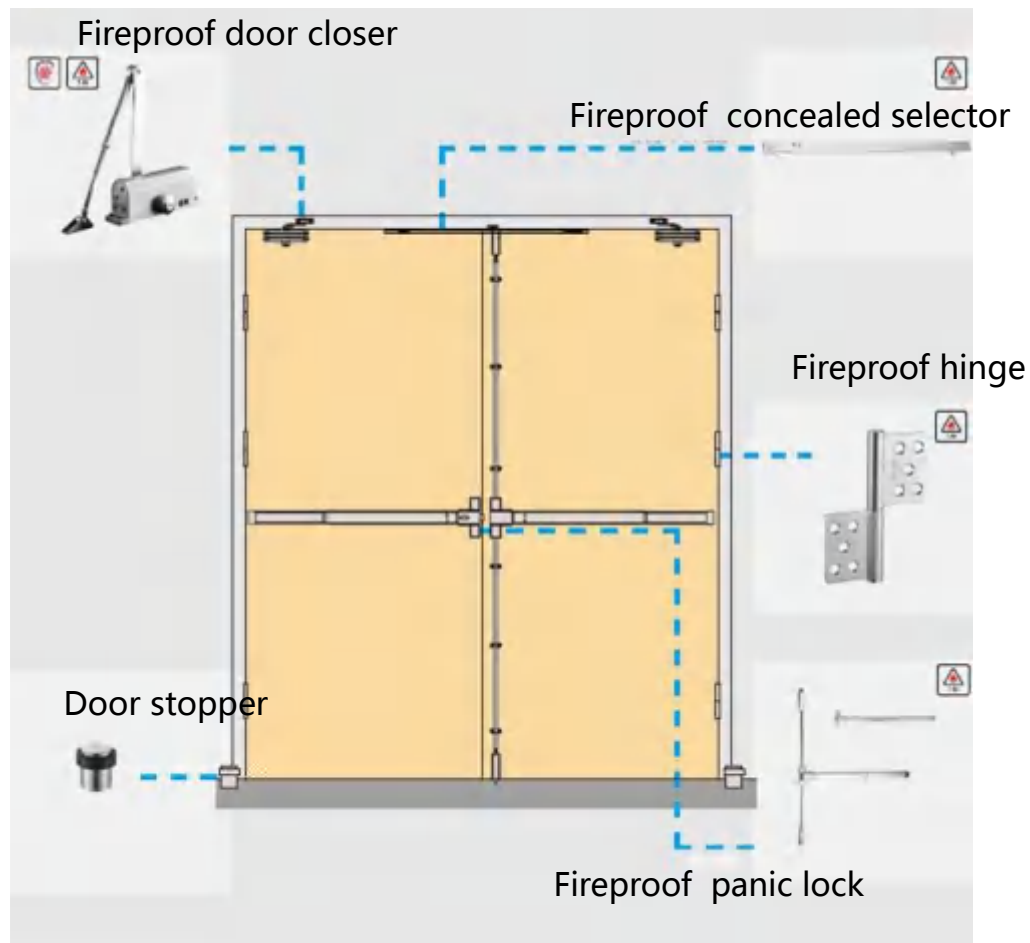
For Door - *Entrance door lock & accessories*

KIN LONG
For Better Living

Colours also available in Galaxy Gray, Rose Gold
App available in Bluetooth or WIFI



For Door - *Fireproof door lock & accessories*



For Door - Sliding Door



Top rail
(with cover)



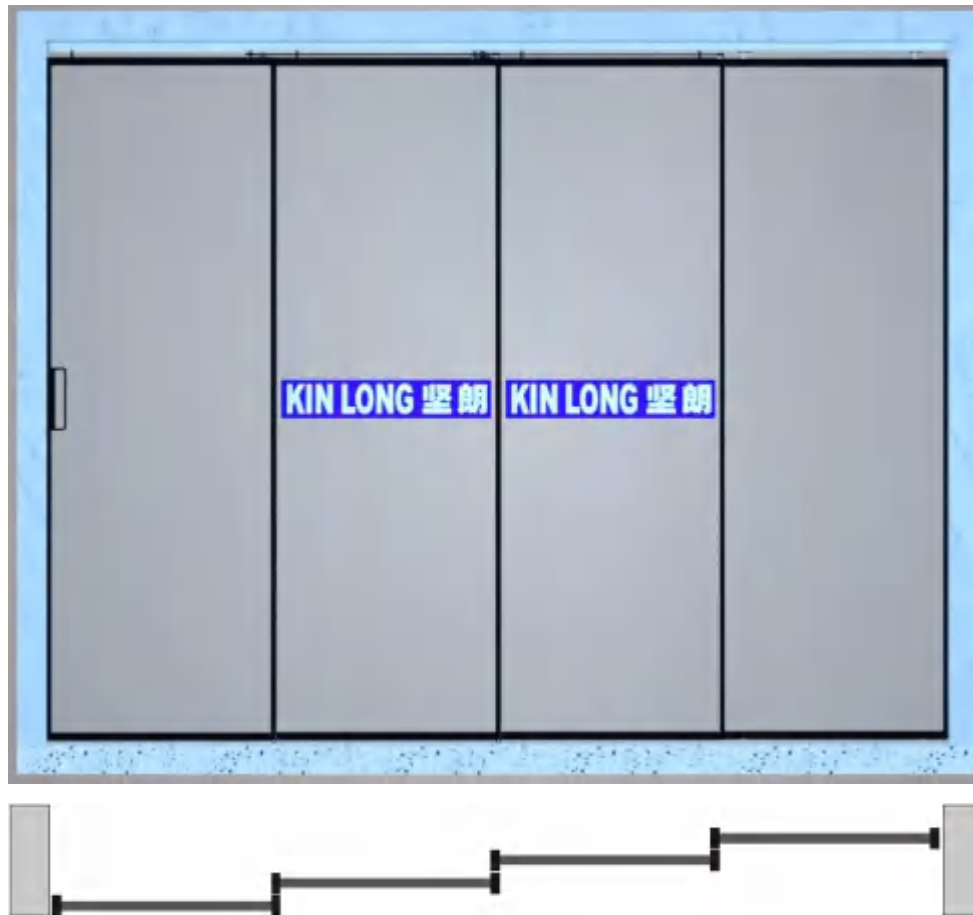
sliding accessories



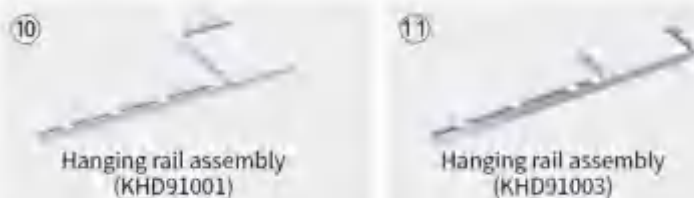
slim frame profile



Sliding handle



For Door - Movable Glass Partition





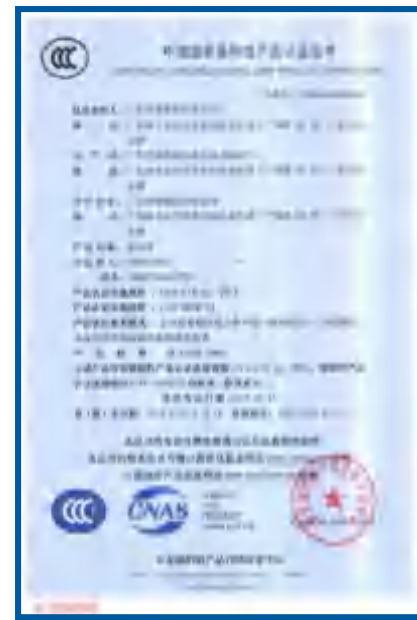
American standard
ANSI certification



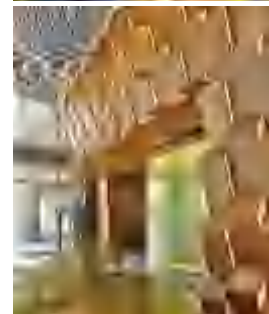
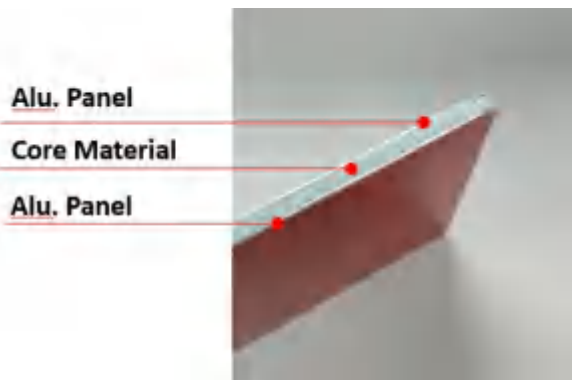
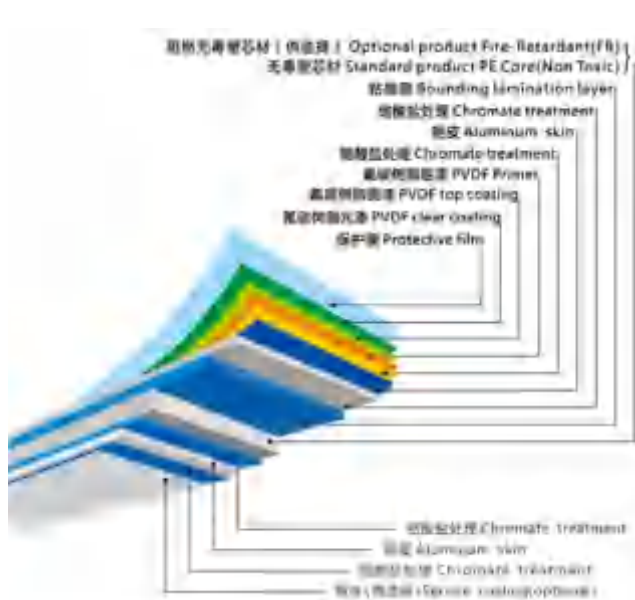
American standard
UL certification



European standard
CE certification

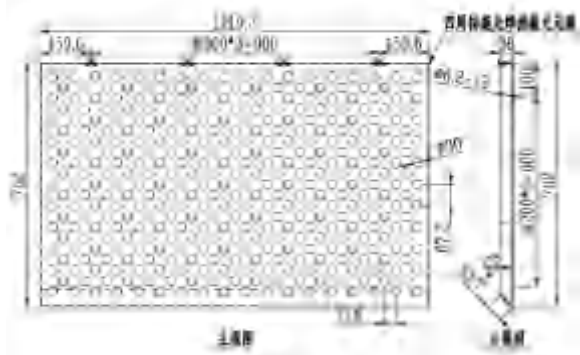


Chinese standard
fire product certification



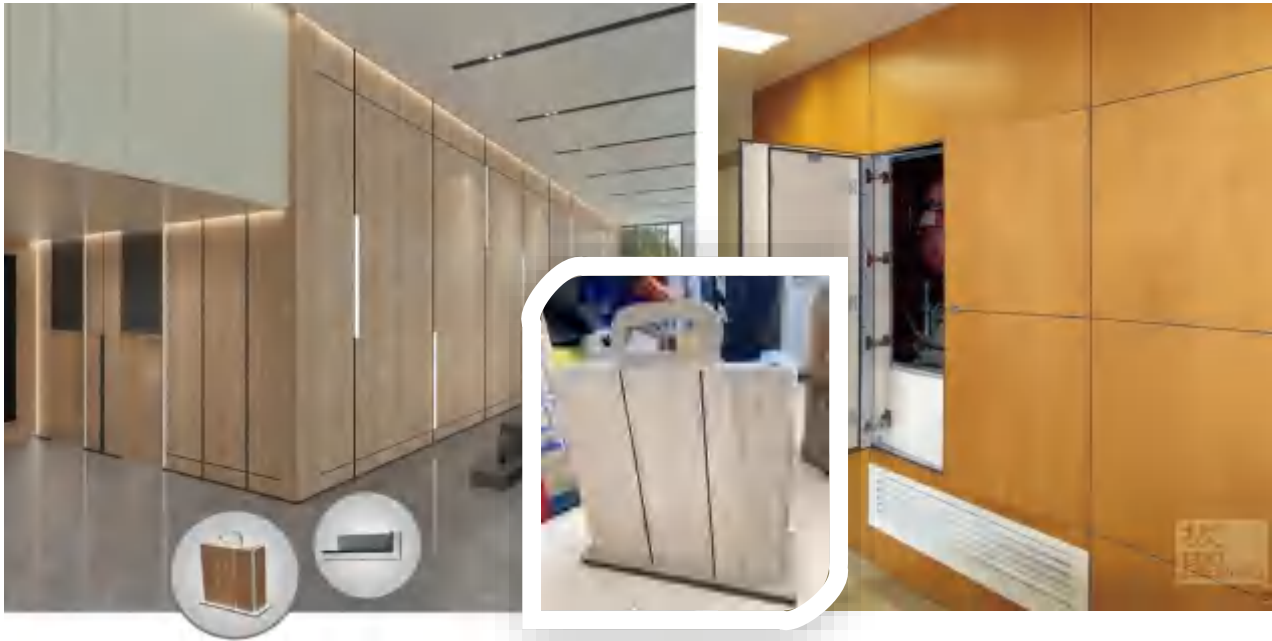
Product	Certificate	Warranty	Specification
Aluminum Composite Panel	NFPA 285 for A class fire-resistance		Size: 1220*2440*4mm (48''*96'') Total thickness: 4mm Finish: PVDF 2 coats Back: Light aluminum Core material: A2

For wall - Aluminum Panel



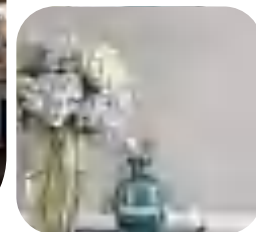
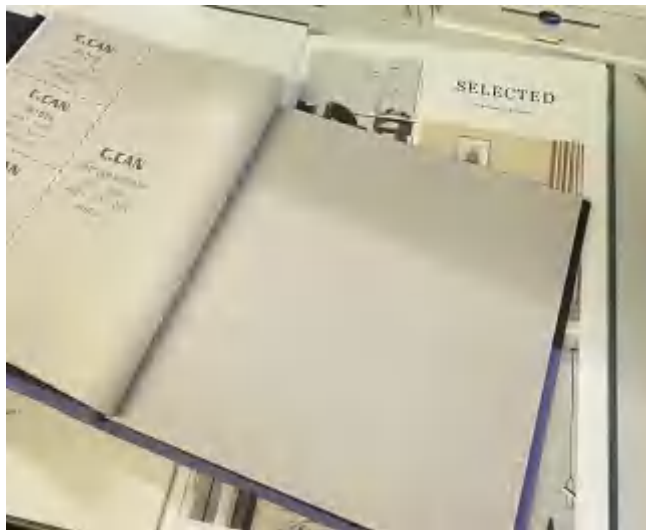
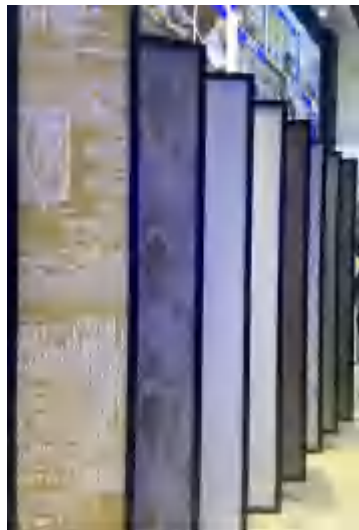
Product	Certificate	Warranty	Specification
Perforated aluminum panel FBCB-1	-	20 years	Size: 762*1220*3mm (30"*48") Material & finish: 3003H14 aluminum; PPG PVDF 3 coats Color: Silver Metallic (Semi gloss), as approved sample Other: 32% openness with opening hole ϕ 30mm Folding: 90° angle, folding 38*20mm Remark: without backer

For wall - HPL Panel



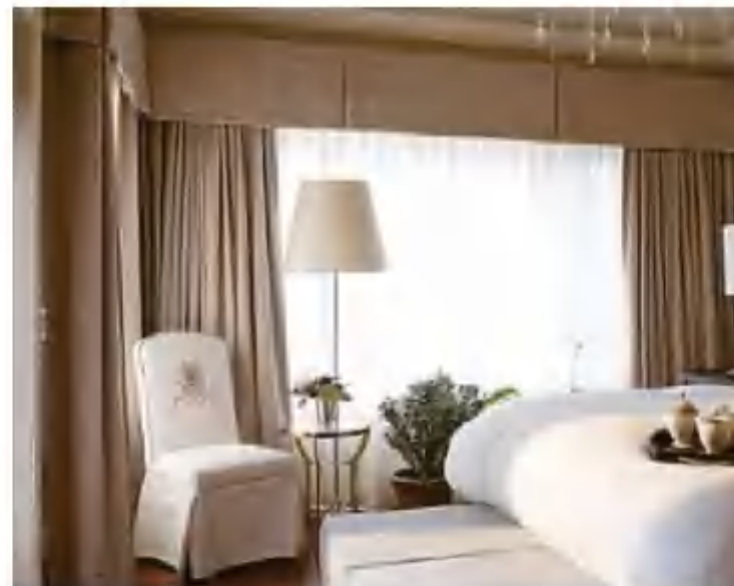
Product	Specification
HPL wall panel	Material: High Pressure Laminate

For wall - Wallpaper / Wall cloth

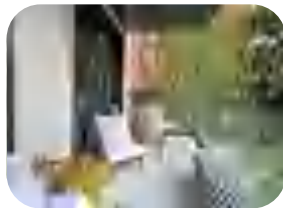


Product	Specification
Wallpaper	Material: Pure paper/non-woven paper
PVC wallpaper/wall cloth	Material: PVC Optional performance: fireproof level / anti-bacteria / anti-moisture etc.
Fabric wall cloth	Material: Non-woven fabric + finely carved cotton velvet / other Fire proof: none / B1 level

For wall - Curtain/ Automatic curtain



Product	Specification
Curtains	<p>Size: customized</p> <p>Shade: translucent/semi-translucent/full shade/others</p> <p>Material: polyester/cotton/silk/linen/cotton linen/others</p> <p>Ratio of pleats: 1.5~2 times (recommended)</p> <p>Installation: single-layer hanging / double-layer hanging / other (including Roman rod and curtain box)</p>

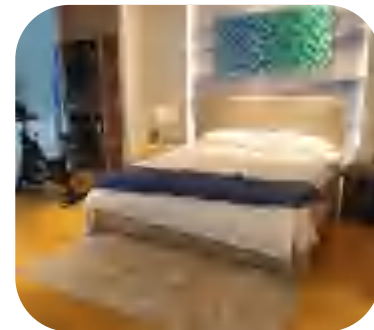
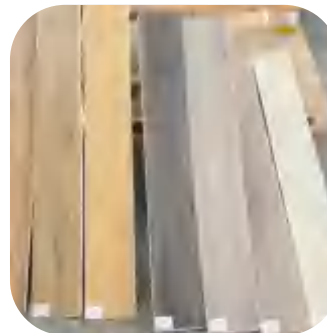
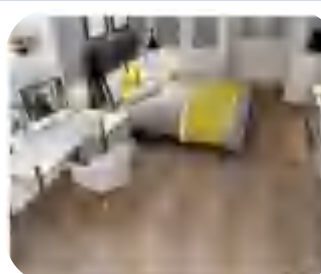


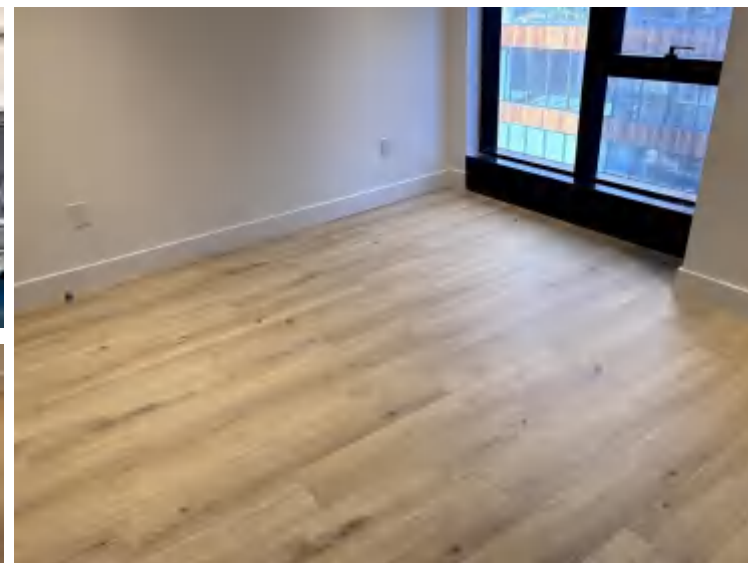
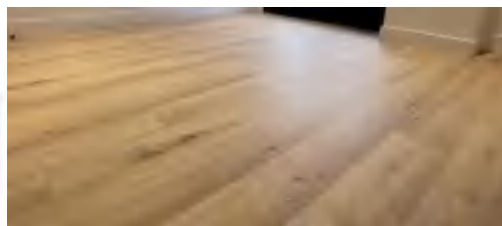
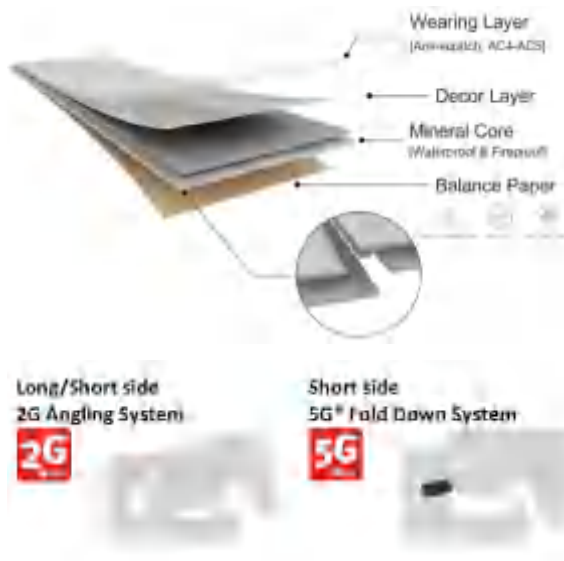
Product		Specification
Glass railing system	Post and railing	Material: Glass + Austenitic stainless steel 304/CF8, 316/CF8M, 316L Surface treatment: #320 satin brushed / mirror / powder coating / electroplated Post style: Round tube, square tube, rectangular tube, flat oval tube, single plate, double plate.
	Cap railing & base shoe	Base shoe: aluminum alloy, Anodized silver white
Aluminum system	Aluminum fence	Material: 6063-T6 aluminum Surface treatment: powder coating, coating thickness $\geq 50\mu\text{m}$ Color: variety of options (matt black, white etc.)



Product	Specification
Aluminum ceiling	Material: aluminum alloy Specifications: 600mm*600mm*0.8mm or other options Surface treatment: powder coating (colors optional)
Gypsum ceiling board	Material: Phosphogypsum + desulfurization gypsum Flexural Strength (Lateral): average 410~525N Flexural Strength (longitudinal): average 165~205N
WPC ceiling	Material: High-quality PE + wood composite powder

Product	Specification
SPC floor (100% virgin material)	Size: 1220*180mm (48''*7'') or customized size Thickness: 4~7mm plus(or not) 1.5mm IXPE mute layer Wear layer: 0.3 /0.5mm (12/20mil) Fire retardant level: B1; Formaldehyde emission: 0 Remark: ASTM tested, CE certificated
LVT floor (Dry back / click /loose lay)	Size: 1220*180mm (48''*7'') or customized size Thickness: 1.5~5.0mm Wear layer: 0.07 /0.7mm (2.75~27.55 mil) Fire retardant level: B1; Formaldehyde emission: E1 Remark: ASTM tested, CE certificated
Homogeneous floor	Material: PVC Color: variety of options Wear resistance level: Class DS (T level)





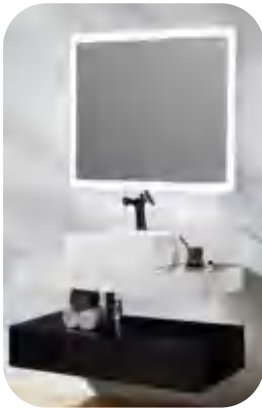
Product	Certificate	Warranty	Specification
MGO Fiberboard Plank	ASTM A Class fire-resistance	10~30 years	<p>Size: L1215*W196*T (8.2 +1.5mm EVA)mm (2.5634 sqft/pcs)</p> <p>Main material: Magnesium Wood fiber</p> <p>Surface treatment: EIR wood pattern</p> <p>Packing: 8 pcs/carton (20.5 sqft / carton)</p> <p>Grams of wear resistance: 45g; Density: 1400</p> <p>Fire resistance level: B1; Formaldehyde: E0 level</p> <p>Water absorption: 1.6% (Thickness swell: 0%)</p> <p>Remark: with Valinge 5G click patent</p>

For bathroom - Glass Shower Room

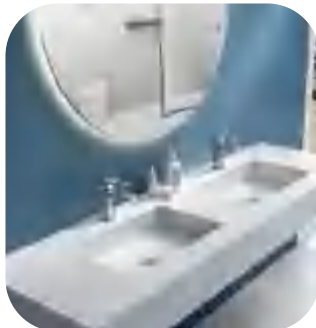


Product	Specification
Shower door (frameless style LHS005B21)	Hardware: aluminum alloy; Stainless steel Glass: tempered glass/customized glass; T=8mm/10mm/12mm Surface treatment: Nickel brushed/ Matt black/Chrome/other Style: Frameless (Single/Double sliding; Diamond shape; hinge type; folding door; linkage door etc.
tower bar, clothes hook, Faucet, tissue box, vanity mirror, soap dispenser, floor drain etc.	Material: stainless steel; Surface treatment: satin brushed/mirror/Chrome/other Specification: variety of options

For bathroom - Cabinet/LED Mirror/ Sanitary



Product	Specification
LED / ordinary mirror	Size: 600*800*35mm (23 3/5''*31 1/2''*1 2/5'') or other size Material: 5mm environmental mirror + aluminum + PVC Function: LED, defogging, touch switch and motion sensor available Voltage: AC 100-240V, 50/60Hz; US plug, cable length 800mm (31 1/2'') Protection: IP65 for power supply; whole mirror ≥IP44
Artificial stone/ceramic basin/bathtub	Size: 600*800*120mm (23 3/5''*31 1/2'' *4 7/10'') or other size Material: Artificial stone resin, solid surface, polymarble; Surface treatment: matt white; Glossy white; customized Installation: countertop or undercounter
Polywood/other bathroom cabinet	Material: polywood (other material available) Size: customized; Surface color: variety of options



For bathroom



Product	Certificate	Warranty	Specification
Frameless LED Mirror	ETL	2 years	Size: W24*H36" *T35mm Material: 5mm environmental mirror; Inner frosted, front & backlit Function: LED light, 2835/120 * 3000-6000k Color temperature adjustment, brightness adjustment; Defogging; Explosion-proof film Voltage: AC100-130V, 50/60Hz; Protection: ≥IP65 & ≥IP44
Frameless LED Mirror	ETL	2 years	Size: W96*H36" *T35mm Material: 5mm environmental mirror; Inner frosted, front & backlit Function: LED light, 2835/120 * 3000-6000k Color temperature adjustment, brightness adjustment; Defogging; Explosion-proof film Voltage: AC100-130V, 50/60Hz; Protection: ≥IP65 & ≥IP44
Framed Coated Mirror	ETL	2 years	Dimension: W559*H1385*35mm (22"*54 1/2"); Finish: satin black Material: LED light strip + S.S 304 + 5mm coated mirror + PVC back Function: frosted LED lighting; 5000k color temperature; Hand scan sensor switch; ; Explosion-proof film Voltage: AC100-130V, 50/60Hz; Protection: ≥IP65 & ≥IP44

Outdoor decking - WPC

KIN LONG
For Better Living



Product	Specification
WPC decking	Material: Wood powder + High quality PE Color: Teak + black or other options Size: L2200*W140*H25mm or L2200*W140*H22mm (Length ≤3m)

CONTENTS

01 Company Profile

02 Interior Decoration Solution

03 Door & Window Solution

04 Facade Envelop and Structure Solution



◀ 1717 Broadway (Courtyard & Residence Inn Manhattan/Central Park)

Location: New York City, NY, USA

KIN LONG Products:

- ◆ Aluminum Windows & Door Accessories: Top-hung Window Series, Handle, Friction Stay, Transmission accessories

Golf Garden Residential Community - Abu Dhabi



◀ Golf Gardens Residential Community Project II

Location: CGCJ+X7W, Khalifa City, Golf Gardens, Abu Dhabi

KIN LONG Products:

Aluminum Windows & Door Accessories: Top-hung Window Series , Handle, Friction Stay, Limiter



← Vinhomes Central Park

Location: Vinhomes Central Park, 208 Nguyen Huu Canh, Ho Chi Minh 084

KIN LONG Products: Aluminum Doors and Windows Series, Door Control Series, Point-fixed Series

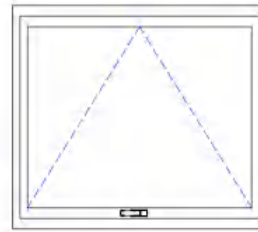




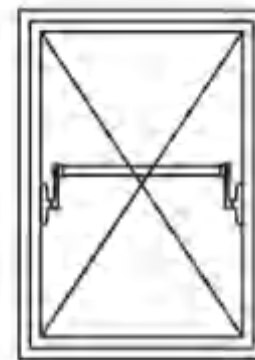
Sliding D&W



Casement D&W



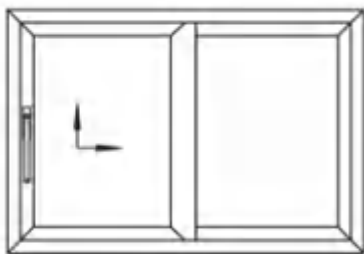
Top Hung window



Parallel window



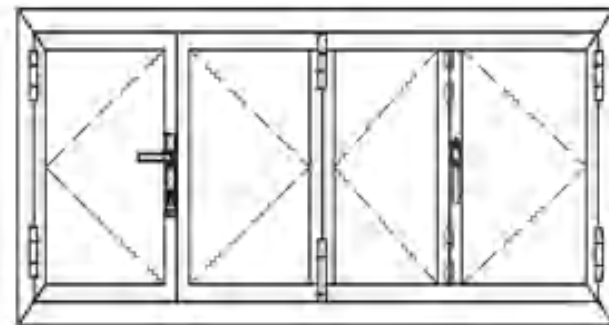
Mullion



Lift & Sliding



Turn & Tilt



Sliding & Folding

Door & Window Series *Product line*

Window/Door series	Kinex	KINLONG	CIFIAL	SIVER	TODN
Alu Tilt-and-turn window	✓(90Kg, 1.8m)	✓(130Kg, 2m)	✓(130Kg, 2.5m)	✓(130Kg, 2.5m)	✓(110Kg, 2.1m)
Alu Inward/outward window	✓(80Kg/60Kg)	✓(80Kg/100Kg)	✓(90Kg/80Kg)	✓(80Kg/80Kg)	✓(80Kg/60Kg)
Alu Top-hung window	✓(90Kg)	✓(200Kg)	✓(60Kg)	✓(65Kg)	✓(90Kg)
Alu Sliding window/door	✓(150Kg)	✓(800Kg)	✓(300Kg)	✓(170Kg)	
Alu Casement door	✓(130Kg)	✓(200Kg)	✓(150Kg)	✓(150Kg)	✓(150Kg)
Alu Bi-folding door		✓(120Kg)	✓(90Kg)		
Alu Lift and sliding door		✓(400Kg)	✓(300Kg)		✓(600Kg)
Alu tilt-and-slide widow		✓(80Kg/150Kg)	✓(80Kg/150Kg)	✓(80Kg/150Kg)	
Alu Lateral sealing window/door		✓(150Kg/180Kg)	✓(150Kg/180Kg)	✓(150Kg/180Kg)	
Alu Parallel curtain wall window		✓(250Kg, 3.5m)			
Alu smart window		✓(40Kg, 1.5m)	✓(80Kg, 1.5m)	✓(80Kg, 1.5m)	✓(110Kg, 1.6m)
UPVC Tilt-and-turn window	✓(80Kg, 1.4m)	✓(130Kg, 1.8m)		✓(90Kg, 1.8m)	
UPVC Inward/outward window	✓(80Kg/38Kg)	✓(90Kg/41Kg)		✓(90Kg)	
UPVC Top-hung window	✓(90Kg)	✓(100Kg)			

Door & Window Solution Supplier



Item	Material						
	Hardware	Profile	Glass	Gasket	PU foam	Sealant	Fastening
Thermal insulation	N	Y	Y	(Y)	(Y)	(Y)	(Y)
Wind pressure	(Y)	Y	Y	(Y)	(Y)	(Y)	Y
Waterproof	(Y)	Y	N	Y	Y	Y	(Y)
Air tight	(Y)	Y	N	Y	Y	Y	(Y)
Transparency	N	(Y)	Y	N	N	N	N
Sound insulation	N	Y	Y	Y	(Y)	(Y)	N
Fireproof	(Y)	Y	Y	Y	Y	Y	Y
Security	Y	(Y)	(Y)	N	N	N	(Y)

Y- it changes result in performance changes

(Y)- it changes may result in performance changes

N- it changes do not result in performance changes

QAQC in D&W - Certificate

International certificate



IFT
HK third part



CE



TUV(PSB Singapore)

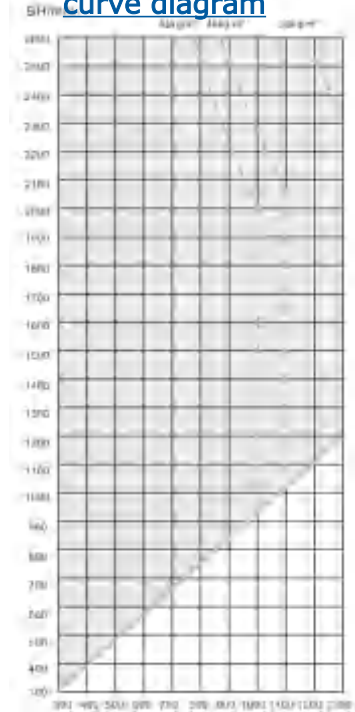


Russian



KIN LONG
For Better Living

130kg level hinge load
capacity
curve diagram



Great ventilation

Door & Window Iconic system

KIN LONG
For Better Living

⊖ Twin flying wings door

Option 1



0°
close

90°
tilt window

180°
casement door

Option 2



0°
close

90°
swing
window

180°
casement door

100kg capacity

W*H:
0.9*2.2m

Unique choices for
house partition

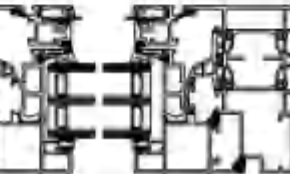
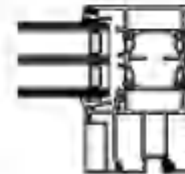
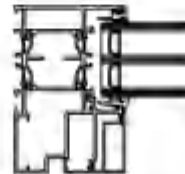
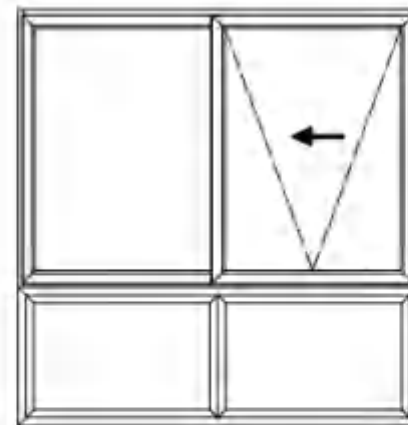
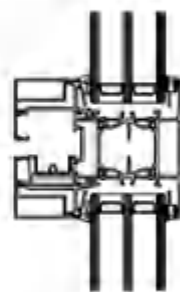
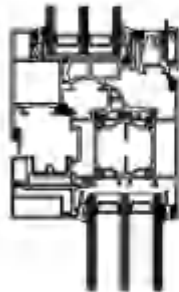
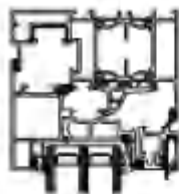
Flexible and safe
operation

It is window, it is
also door

Door & Window Iconic system

KIN LONG
For Better Living

⊗ Tilt and slide window



80kg capacity



W*H: 1*1.8m



Typhoon-resistant



Thermal insulation

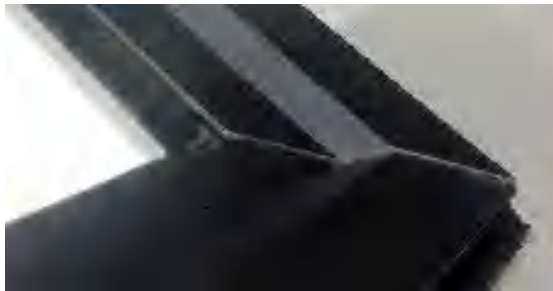


Rainproof

❑ Window corner common issue



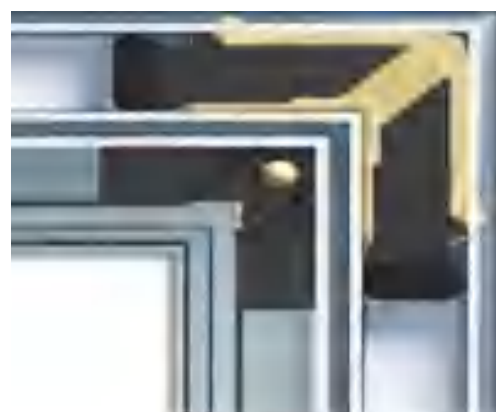
Corner cracking
Water leak



Corner dislocation



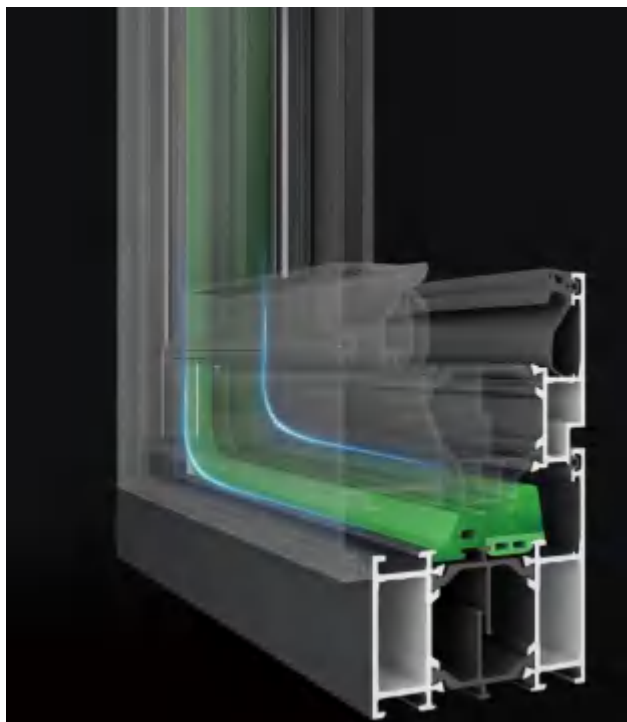
❑ Professional solution of corner issue



L-turn series of thermal break

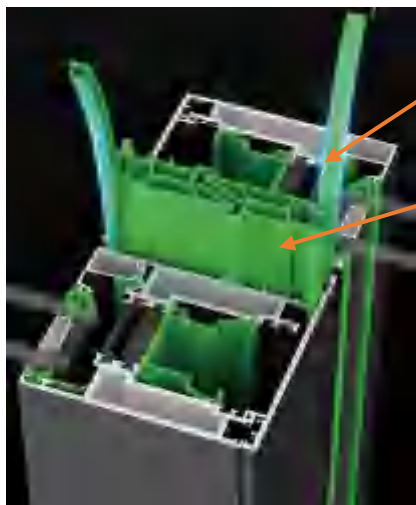
New process design

Right angle turn series



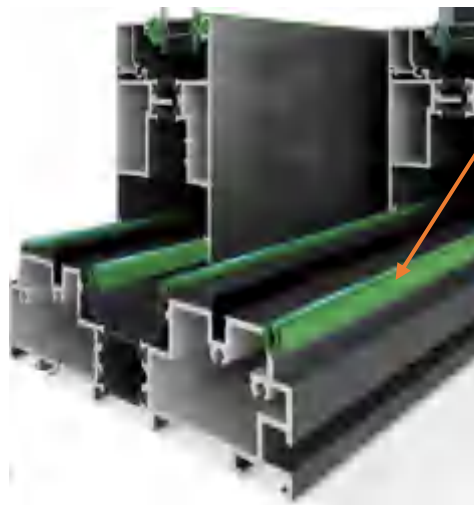
Solve the problem of difficult processing of the corner part of the gasket transmission, and turn the corner directly, without truncating. Solve the problem of installation process differences in doors and windows factories, and improve the performance and overall aesthetics of doors and windows.

Performance Improvement



TPV

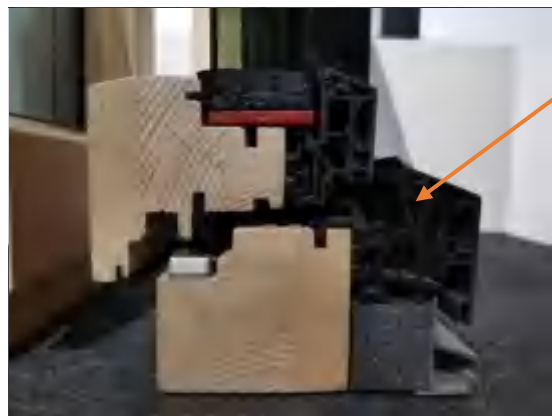
PVC



TPV+
smoother
coating



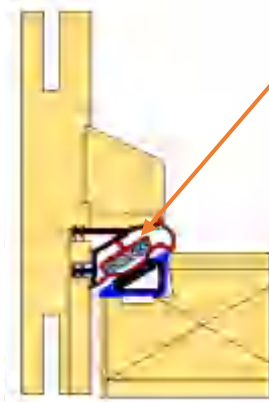
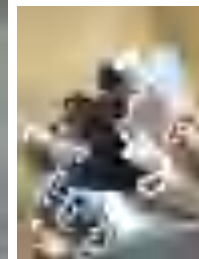
PVC



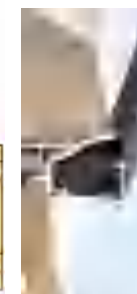
PVC



TPE



PVC





Multi-lock points
Turn and tilt
Lateral sliding

Anti-drop,
Improve safety
(High-rise building)

Supporting and guiding function,
Prevent windows off angle

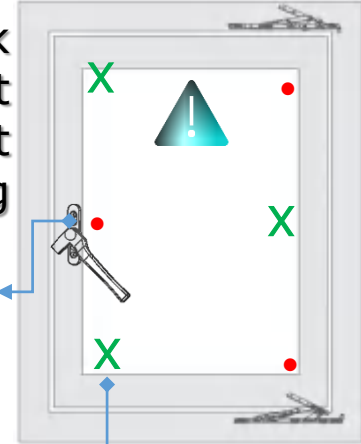
Multi-lock points, stronger wind resistance,
More safe, more sealed

VS

Single-lock point
Open out
Sliding

Single-lock point,
Poor safety,
not strong and durable
(Not suitable for high-rise building)

Poor sealing at corners of window,
Poor thermal insulation



So how would you choose?

- ◆ Multi side multi-lock points (T&T W)
- ◆ Complete hardware system
- ◆ Thermal insulating profile
- ◆ IGU glass /laminated glass
- ◆ EPDM gasket

Heat-insulation coefficient:
 $K \leq 2.5 \text{ W/m}^2\cdot\text{K}$
Shading coefficient:
 $SC \leq 0.44$

Heat-insulation coefficient: $K \leq 5.7 \text{ W/m}^2\cdot\text{K}$
Shading coefficient:
 $SC \leq 0.8$

So, What can we do and provide

- ◆ Single-lock point
- ◆ Only locking and loading parts
- ◆ Non-insulated profile
- ◆ Single glass
- ◆ PVC gasket

Summary

Hardware :
Handle, Hinge, Roller



Sealing & Insulating :
Mohair, Spacer, Gasket, PA66 Strip, Silicone, PU foam



Fixing:
Screw, Anchor bolt



One-stop service & supply, give you a excellent door&window system

CONTENTS

01 Company Profile

02 Interior Decoration Solution

03 Door & Window Solution

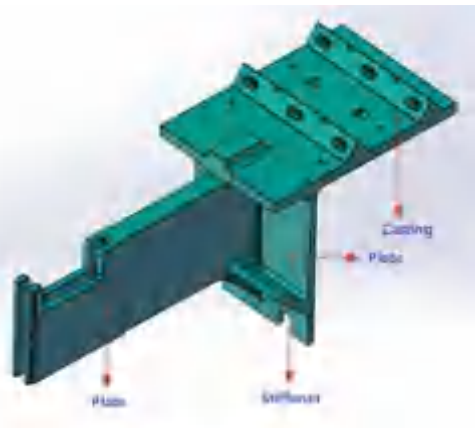
04 Facade Envelop and Structure Solution

Facade - Customized Fittings

Material & Surface: SS.316/SS.2205, satin/mirror

Processing Method: CNC Milling, Casting and Welding.

Typical Project: “Cadenza”, Earlsfort Terrace, Dublin 2



Material & Surface: Carbon steel and aluminum with Powder coating

Processing Method: Casting, extrusion and CNC milling.

Project: AMDOCS (Israel)

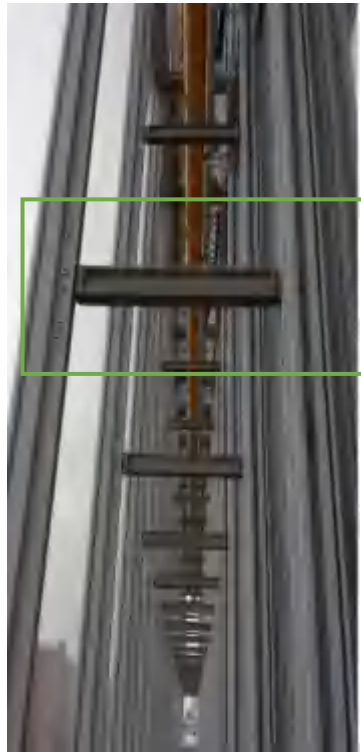


Facade - Customized Fittings

Material & Surface: Customized brackets

Processing Method: Casting and CNC

Project: Columbia University (NY, US)



QC Tools

Facade - Customized Fittings

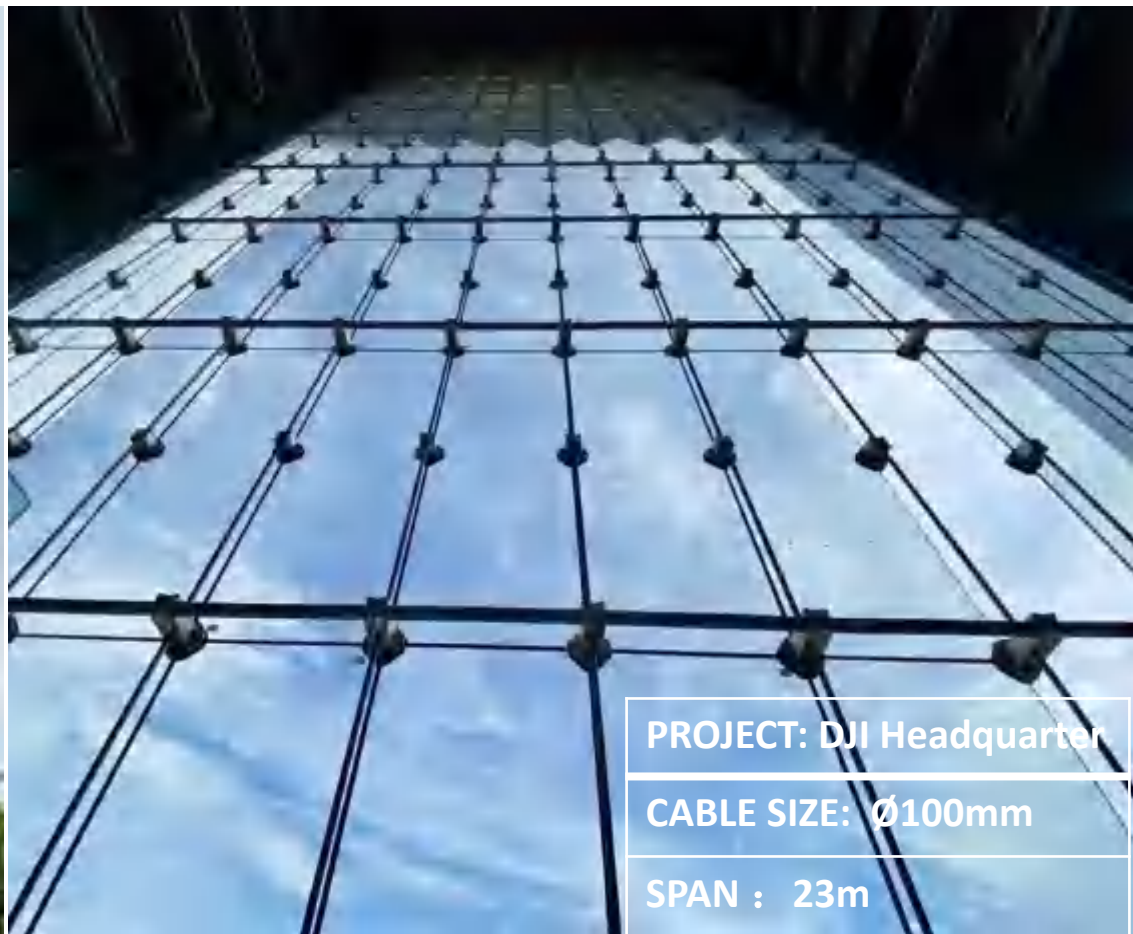
Material & Surface: Stainless steel strut, connectors.

Processing Method: Casting and CNC Milling.

Project: University of Western Australia



Facade - High Span facade - Cable System



PROJECT: DJI Headquarter

CABLE SIZE: Ø100mm

SPAN : 23m



Architectural Steel Facade

A prime solution for *high-span* facade



Carbon Emission



Energy



Cost



Customization

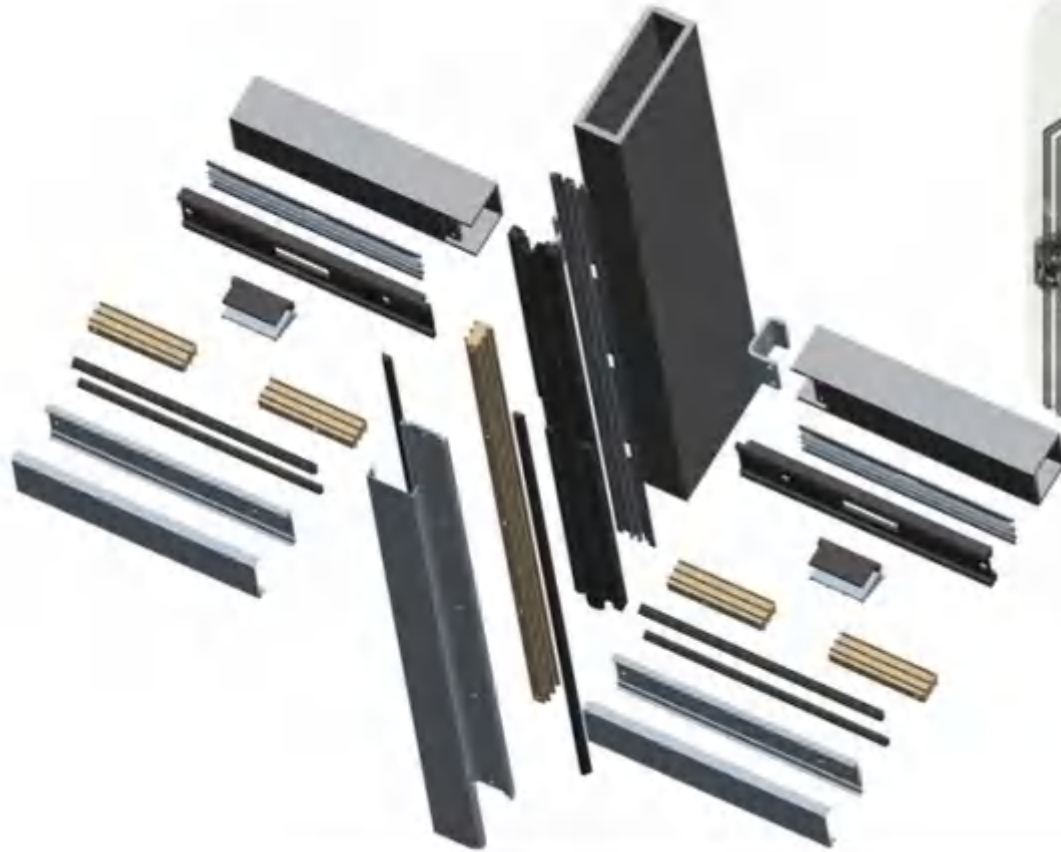
Facade - Architectural Steel Facade System




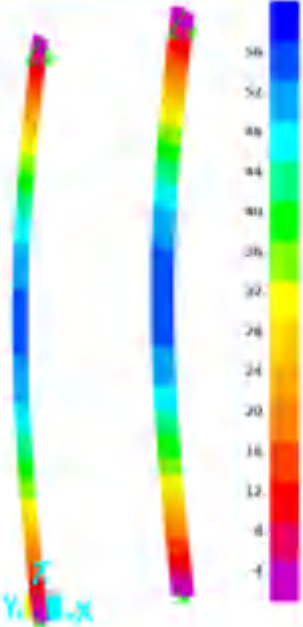



Facade - Architectural Steel Facade System

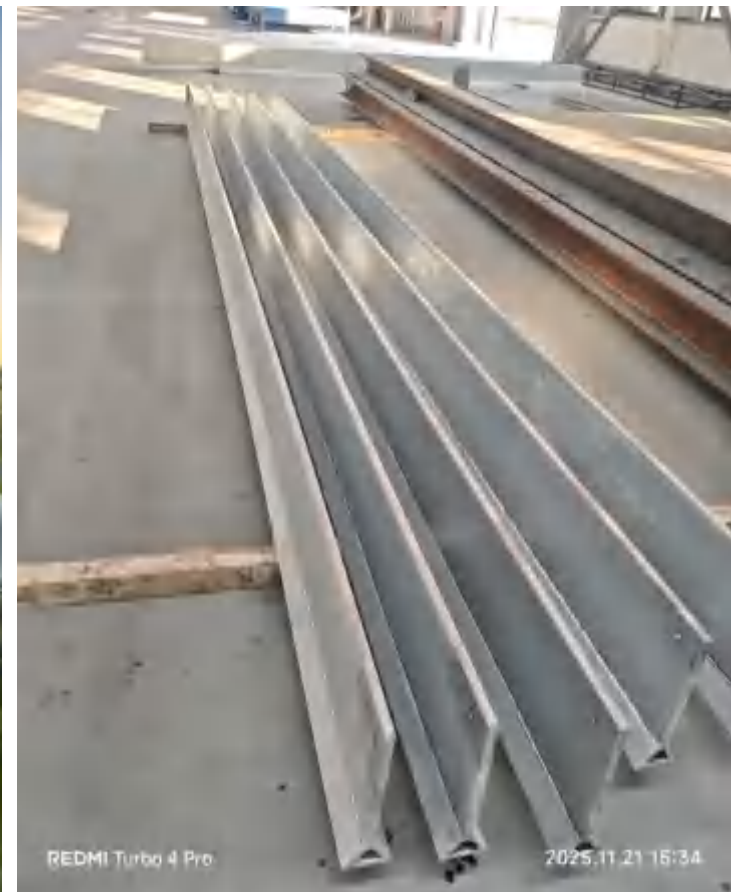
KIN LONG
For Better Living



Facade: Span:10m , Wind load:2KPa , Glass width:2m , Deflection: $L/180 = 55\text{mm}$

Profile Material	Yield Strength (MPa)	Elastic Modulus (GPa)	Section Size (mm)	Section Area (mm ²)	Material Weight (KG/m)	Deflection	Stress (MPa)	CO ₂ Emission (KG/m)	Final Price (USD/Pcs)
Steel S355	355	210	260*80*12*8 	5296	43.9		138	81	1150
Aluminum 6061T6	241	70	400*120*8*7 	7296	20.1		72	250	1275

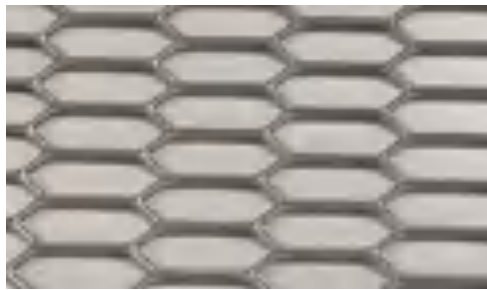
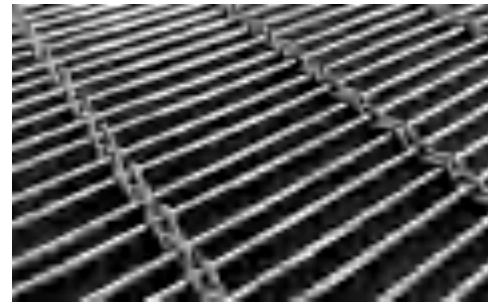
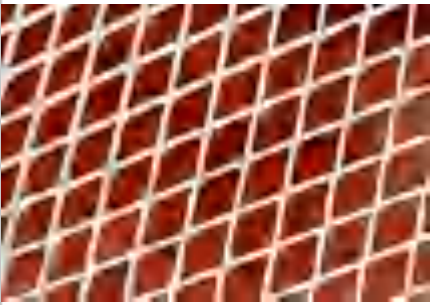
Facade - Architectural Steel Facade System - Oman Culture Complex



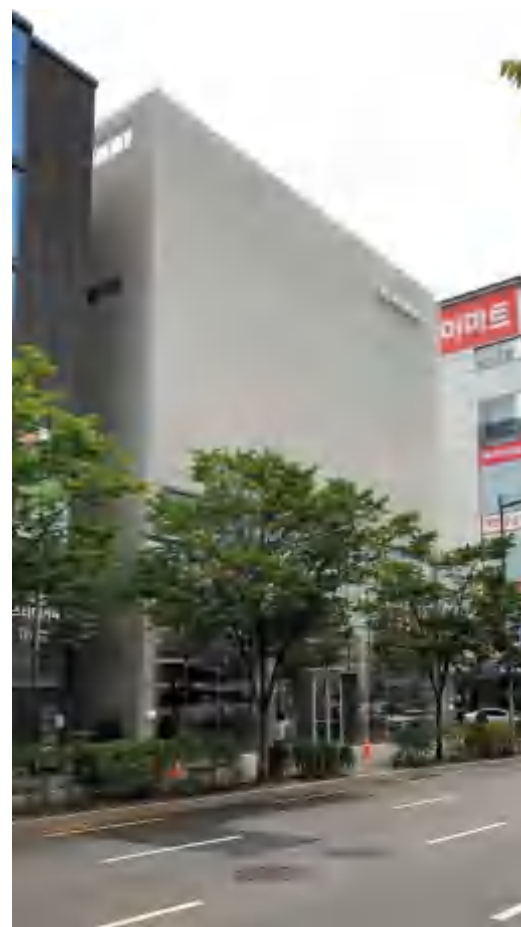
REDMI Turbo 4 Pro

2025.11.21 15:34

Facade - Mesh Facade System



Facade - Mesh Facade System



Facade - Mesh Facade System



Facade - Aluminum Cladding

Max size: 5.5m * 1.8m

Standard Material: 3003, 5005, 5052

Available Finish: PVDF coating, Anodizing

Available thickness: 3mm-12mm

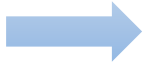


Facade - Aluminum Cladding

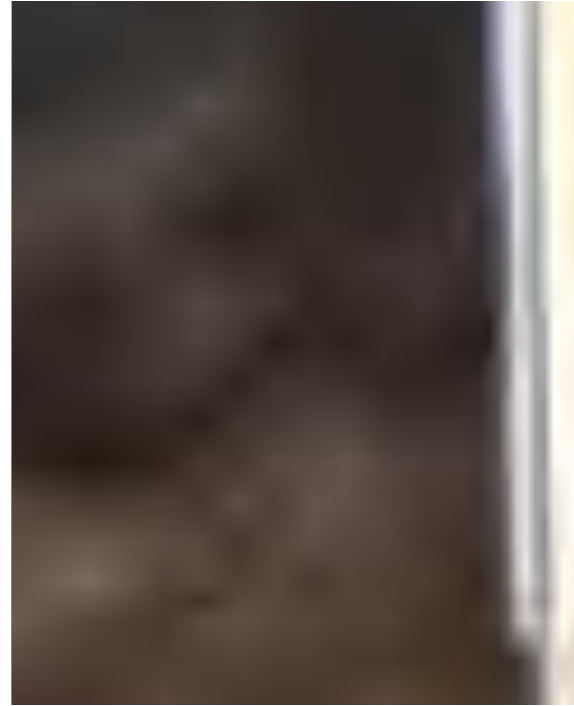




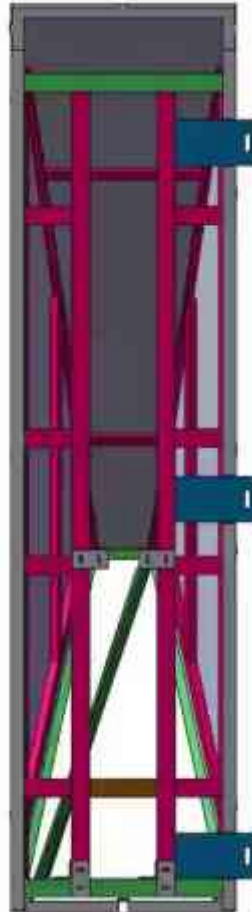
GRC (CNC)



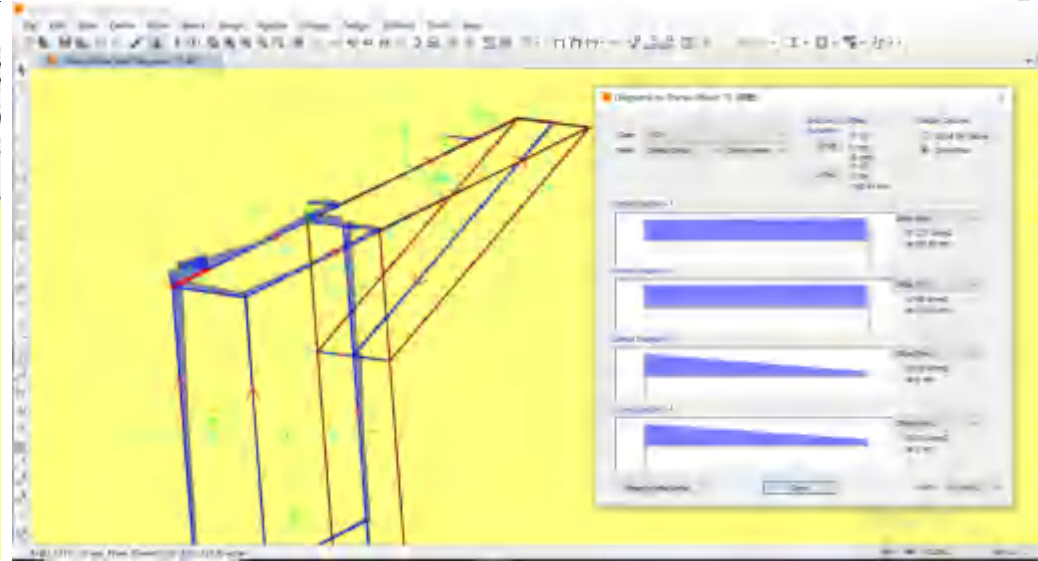
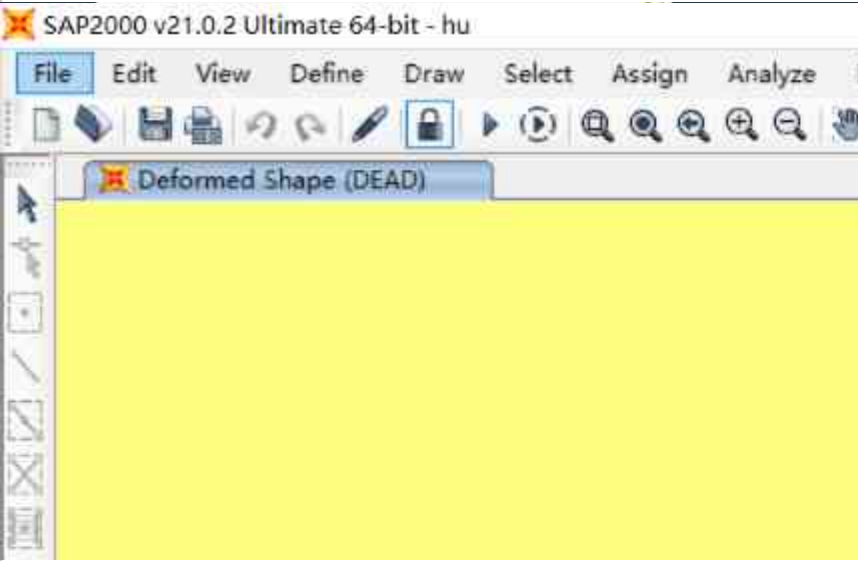
Aluminum (stamping)



Aluminum (CNC)



Facade - Aluminum Cladding



Deformation Check

Maximum deformation: $D = 2.221\text{mm} < d = 3387/120 = 28.23\text{mm}$

(According to BS5427 Standards Table 4.
The maximum lateral deflection should be limited to $L/120$, where L is the panel edge length.)

Stress Check

Maximum stress: $\delta_{\max} = 27.227\text{Mpa} < \delta_{\text{all}} = 156.4\text{Mpa}$
($172/1.1 = 156.4$ 6063-T6: Yield strength :172 Mpa)

Facade - Aluminum Cladding



Facade - Aluminum Cladding



Solution for Innovative Facade



#1

Innovative Facade

#2

Multi-Specification

#3

Materials Processing Method

Installation Site Assists

#4

Sample Lab Test

ITP QC

#5

Optimization Cost/Delivery/Installation

#6

Customization Calculation

PMU Test

#9

#8

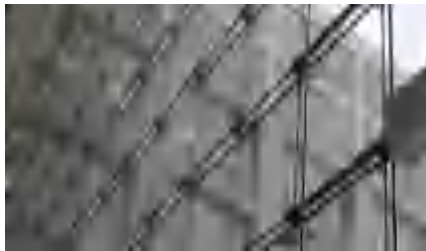
#7

#10

Maintenance Warranty

More information, please send email to us.(mail@kinlong)

Large Span Façade



Cable facade system
Steel facade system
Customized fitting
Silicone Sealant
...

Double Skin Facade



Customized fitting
Anchor Bolt
Cast-in Channel
Fastener
Gasket
...

Unitized Facade



Cast-in Channel
Customized fitting
Window hardware
Fastener
Gasket
...

Cladding System



Aluminum Cladding
ACM/ACP
Stainless Steel Cladding
Mesh
...

KIN LONG
For Better Living

Thank You!



www.kinlong.com