

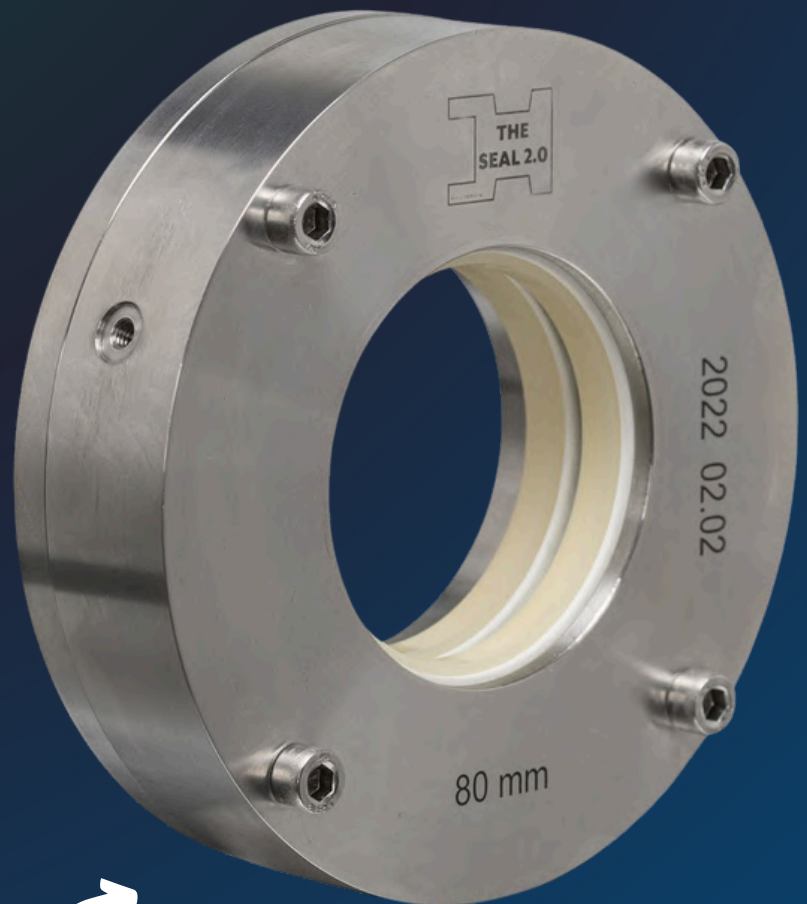
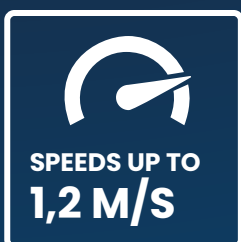
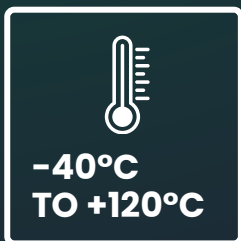


NEW PRODUCT

THE SEAL 2.0[®]

Stronger. Safer. Smarter. The Seal 2.0 is a high-performance, maintenance-free shaft seal designed for long-term use in European industries. Its robust housing ensures a secure fit, while the precisely engineered end plate guarantees reliable sealing performance.

PRODUCT FEATURES



MADE IN GERMANY

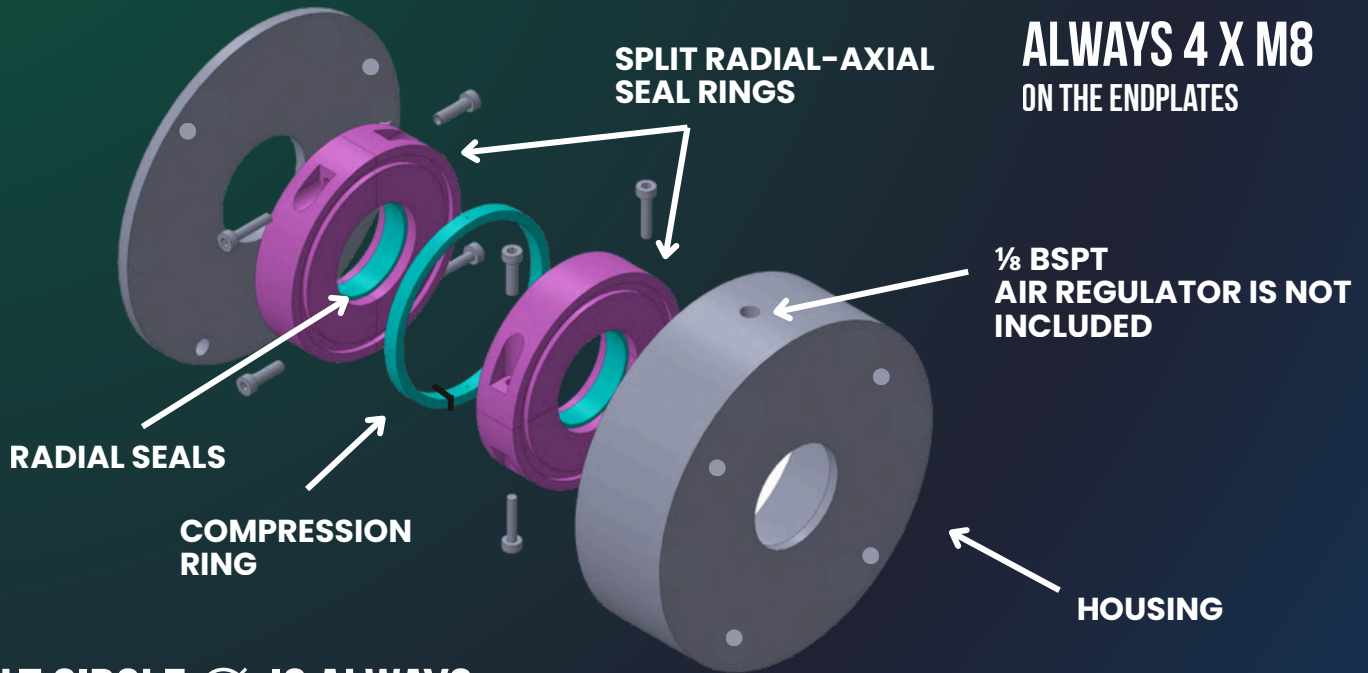
WWW.CINCHSEAL.COM



**OUTER Ø IS ALWAYS
THE SHAFT Ø PLUS 110 MM**

**ENDPLATE MOUNTED INDEPENDENTLY
OF THE HOUSING, FIXED DIRECTLY TO
THE WALL**

**ALWAYS 4 X M8
ON THE ENDPLATES**



**1/8 BSPT
AIR REGULATOR IS NOT
INCLUDED**

**BOLT CIRCLE Ø IS ALWAYS
THE SHAFT Ø PLUS 90 MM**

**HOUSING WIDTH ALWAYS
54 MM**

What makes this seal a **GAME-CHANGER?**
At its core, two innovative rotor cups, connected by an extremely durable ring, provide a dual-use design: after the first operation, simply rotate and reuse—no repair kits or spare parts required.

Twice the use. Half the hassle. The future of sealing starts now!

EQUIPMENT CAPABILITY – MIXERS, SCREW CONVEYORS, BLENDERS, BUCKET, ELEVATORS, ROTARY AIR VALVES, DRYERS, COOKERS, AGITATORS, ROTATING EQUIPMENT

SUITABLE MATERIALS – POWDERS, METALS, SLURRIES, PLASTICS, SLUDGES, FOOD PROCESSING

WWW.CINCHSEAL.COM