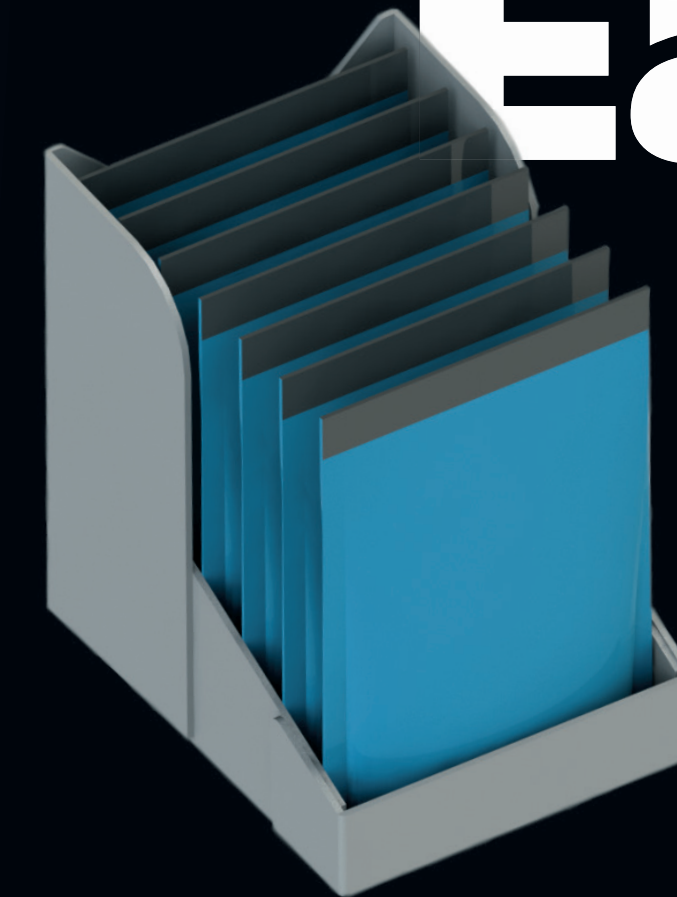
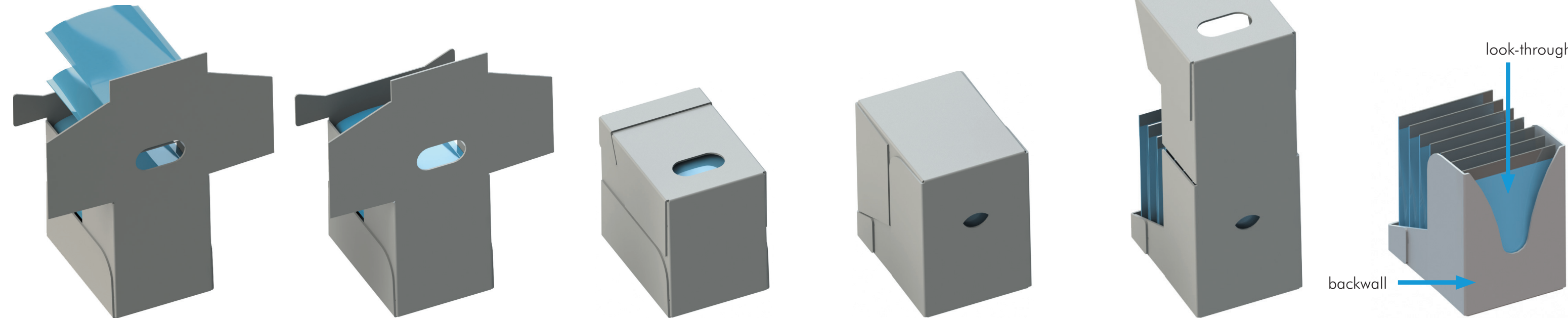


- Backwall for better support of the product
- Back of the case has look through option



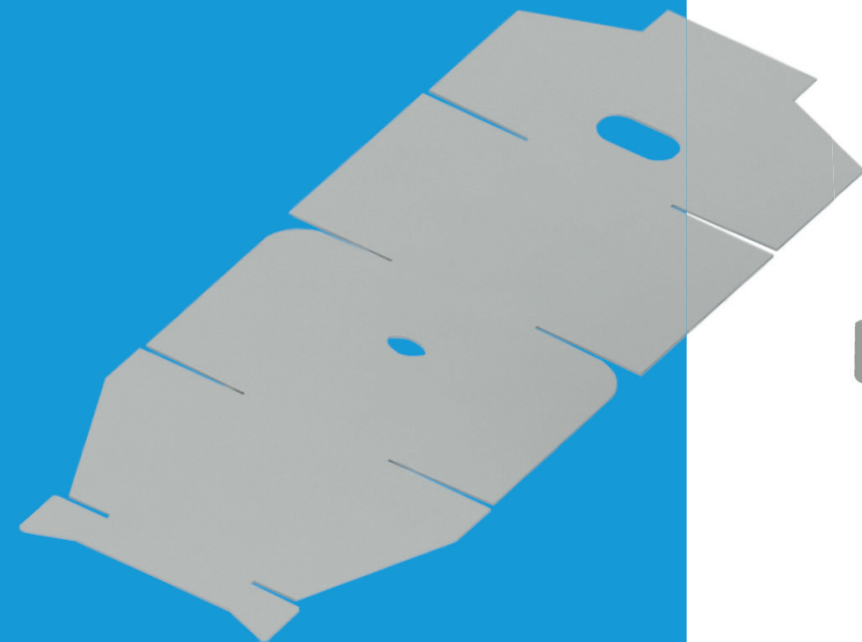
EasyD

Easy Display SRP

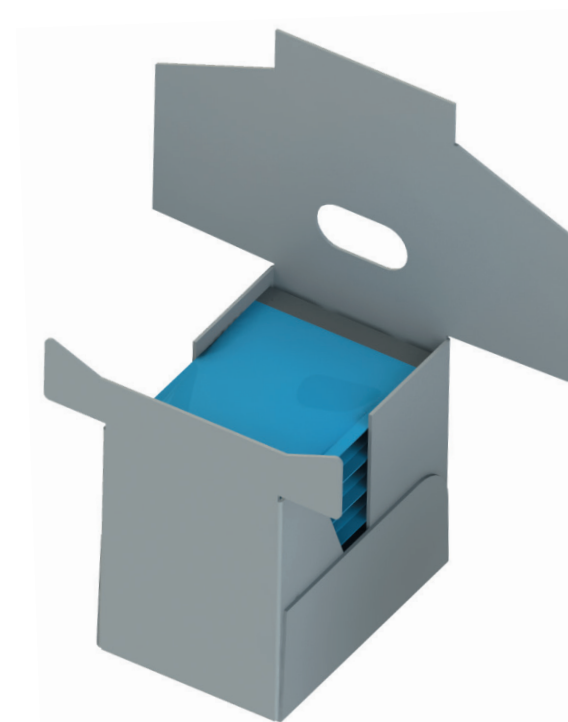
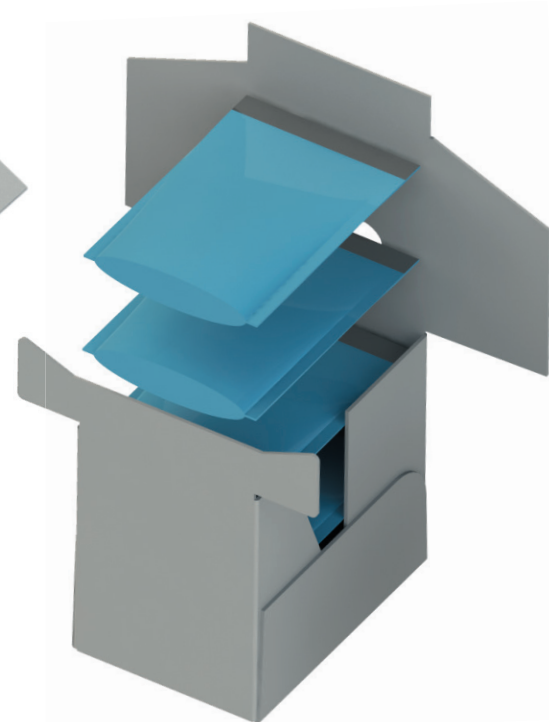
EasyD Case®

Patent pending

- Easy loading
- Protect your product during transport
- Nice appearance on the shelf

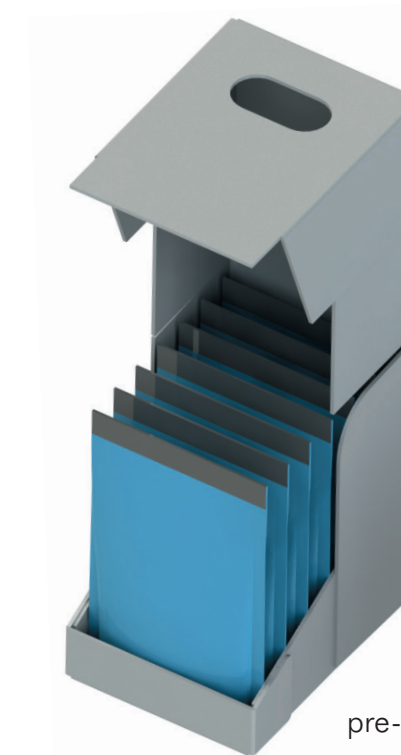


Patent Pending. Copy Rights Reserved by BluePrint Automation Holding BV.
This design can only be used after approval by BluePrint Automation (BPA).

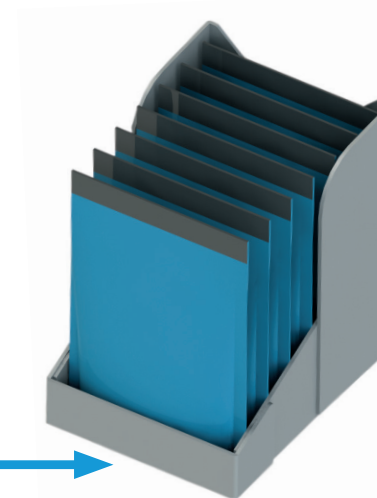


load-ship-display

- Better handling of products by topleading
- Easy to open
- Improved appearance
- No teared front, pre-cut front flap



pre-cut front



blueprintautomation.com



BluePrint Automation BV
T +31 348 410 999
Carrosserieweg 3
3445 BC Woerden
The Netherlands