



# PRODUCT OVERVIEW

**JESSBERGER**®  
pumps and systems

## YEARS OF EXPERIENCE

The family-run company JESSBERGER headquartered in Ottobrunn near Munich is manufacturer of electric and pneumatic driven drum and container pumps, vertical and horizontal eccentric screw pumps, dosing pumps for high viscous media, filling machines, hand operated pumps, flow-meters, nozzles and a comprehensive range of accessories to our production program.

Air operated diaphragm pumps, horizontal centrifugal pumps (also available as magnetically coupled sealless centrifugal pumps) and vertical centrifugal pumps complete the delivery program beside further industrial pumps.

The company owners and longtime employees look back on decades of experience in the pump sector and guarantee the best advice and quick solutions.

Since 2003 JESSBERGER has been producing and selling drum pumps in all variations and has set in a very short time new standards in price and quality.

In March 2008, JESSBERGER moved into the new company headquarters in Ottobrunn. More than 500 sqm production/warehouse and 400 sqm of office ensure further growth and enable the fulfillment of special requests and custom-made products. In February 2018, an immediate neighbouring building was acquired and thereby the floor space doubled. The construction and production of eccentric screw pumps takes place at a second location in Upper Bavaria.

## EXPERT ADVICE

The company leadership and the technical management attach the greatest importance to a strict quality control. The complete production and assembling area are organized in accordance to the quality management system DIN EN ISO 9001:2015 and for the Stainless steel pump tubes, the electric Ex-motors JP-400, 440, 460, 480, the air operated motors JP-AIR 1, JP-AIR 2 and JP-AIR 3 and some eccentric screw pumps in accordance to ATEX 2014/34/EC (explosion prevention and protection).

Annual external and internal inspection audits assure the compliance with these regulations and ensure the high quality standards. This pronounced awareness of quality and the experience for decades in drum pump business guarantee a high quality of the pumps at a very attractive price.

Convince yourself of the advantages of JESSBERGER and the quality Made in Germany.



## OUR ADVANTAGES

- Owner operated family company
- Decades of experience in drum pump business
- Quality made in Germany
- Optimal price/performance ratio
- Personal and expert advice
- Fast customer service
- Maximum flexibility in all company divisions
- Certified according to ISO 9001:2015 and ATEX 2014/34/EC





# MANUAL HAND PUMPS

Manual hand operated pumps are light and handy devices for an easy and safe filling of thin fluid up to lightly viscous media (max. 1.000 mPas) out of small canisters, 60 and 200 liter drums or IBCs.



## Technical data

Designed as hand lever or rotating pump.	✓
Different pump materials and seals depending on the medium. The hand operated pumps can be divided in following groups: <ol style="list-style-type: none"> <li>1. For acids, alkalies and detergents.</li> <li>2. For non flammable mineral oil products.</li> <li>3. For easy flammable media like solvents.</li> <li>4. For thin fluid food.</li> </ol>	✓
Pump tube lengths for canisters, drums or IBCs.	✓
Flow rates from 0,3 l/stroke up to 1 l/rotation.	✓
Drum adapter with male thread G 2", adapters for plastic containers available.	✓

Safe product transfer

Exact dosing

Potential equalization cable

Robust and handy

# LAB PUMPS

## Electric or air operated laboratory pumps

with a pump tube made of Polypropylene (ø 25, 28 or 32 mm), Stainless steel 316Ti (ø 28 or 32 mm) or PVDF (ø 32 mm). Laboratory pumps are the economical and safe solution for filling and transferring small quantities of acids and alkalies.

### Technical data

Designed for a safe and easy filling of low quantities out of narrow-necked containers and canisters.	✓
Handy and easily transportable due to the low total weight.	✓
The pumps are driven by universal motors or air operated motors.	✓
Flow rates up to 49 l/min. (with 1" hose). Delivery head up to 10 m.	✓
Max. density 1,3, max. viscosity up to 400 mPas (with JP-140 motor).	✓
Optimum emptying of tanks by different pump tube lengths up to 1.200 mm and pump tube diameters up to 32 mm.	✓
Easy disassembling and easy cleaning of the pump tube.	✓
Comprehensive accessories such as barrel and thread adapters, hoses and nozzles.	✓

# DRUM PUMPS

## Drum and container pumps with electric or air operated motor

for transferring low viscous media such as acids, alkalies and cleaning agents (pump tube made of Polypropylene), highly aggressive chemicals (pump tube made of PVDF), mineral oil products up to 1.000 mPas (pump tube made of Aluminum) or flammable media as well as food (pump tube made of Stainless steel 316Ti).

### Technical data

Electric universal motors in 230, 115, 24 volts in different performance and protection classes.	✓
Air operated motors (for max. 6 bar operating pressure).	✓
Flow rates up to 112 l/min. (with 1" hose).	✓
Head up to 3.7 bar (with impeller for high pressure).	✓
Max. density 1,9, max. viscosity up to 1.000 mPas (with JP-280 motor).	✓
Pump tube lengths in 700, 1.000, 1.200, 1.500, 1.800 mm. Special lengths up to 3.000 mm.	✓
Mixing pump tubes or complete drum emptying pump tubes as an option.	✓



# ECCENTRIC SCREW PUMPS JP-700 SR



Vertical eccentric screw pumps with single phase or air operated motors (also in an ATEX version available) are suitable for a gentle and low pulsation transferring of thin fluid up to viscous media (max. 20.000 mPas) out of drums and containers. They are used either as portable or stationary pumps for intermittent operation.

## Technical data

Electric universal motors in 230 and 115 Volt or air operated motors (for max. 6 bar operating pressure).	✓
Pump tubes in Stainless steel 316Ti with planetary gear.	✓
Stators made of NBR, NBR light, EPDM, EPDM light, FKM, PTFE (depending on the type of medium).	✓
Discharge pressures of 6 (one stage) or 12 bar (two stages).	✓
Standard flow rates of 12, 25 or 50 l/min. Viscosity up to 20.000 mPas.	✓
Pump tube lengths in 700, 1.000 and 1.200 mm. Special lengths are available on request.	✓
Easy to disassembling and therefore proper cleaning. Weight 15 kg.	✓

# ECCENTRIC SCREW PUMPS JP-700 DR

Eccentric screw pumps with three phase, gear or air operated motors (also available in an ATEX version) are suitable for a gentle and low pulsation transferring of thin fluid up to high viscous media (max. 100.000 mPas) out of drums and containers. They will be used particularly as stationary pumps and especially for continuous operation times.

## Technical data

Pump tubes in Stainless steel 316Ti. Stators made of NBR, NBR light, EPDM, EPDM light, FKM, PTFE (depending on the type of medium).	✓
Flow rates of 12, 25 or 50 l/min. (drum pump), 80, 200 or 300 l/min. (container pump).	✓
Discharge pressures of 6 or 12 bar.	✓
Pump tube lengths in 700, 1.000, 1.200 mm (drum pump) or 1.000, 1.200, 1.400 mm (container pump). Special lengths are available on request.	✓
The pump is also available in a food version or as a barrel dosing pump.	✓



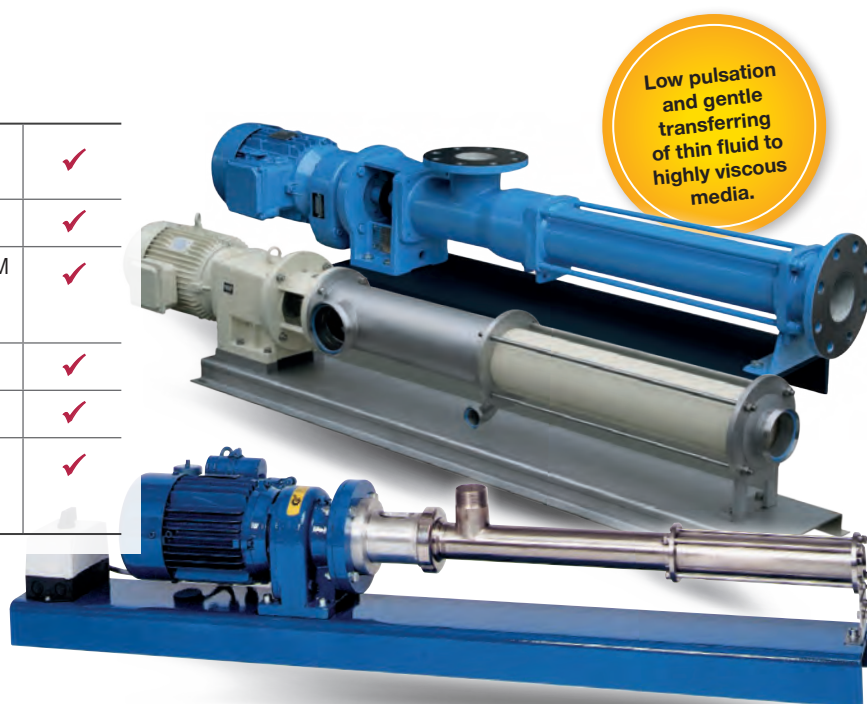


## Horizontal eccentric screw pumps

Horizontal eccentric screw pumps with three phase, gear or air operated motors provide a gentle, low pulsation transferring of thin fluid up to high viscous (max. 100.000 mPas), thixotropic, gas containing, particles or fibres containing, aggressive or neutral media. These pumps will be used particularly as stationary pumps and especially for continuous operation times.

### Technical data

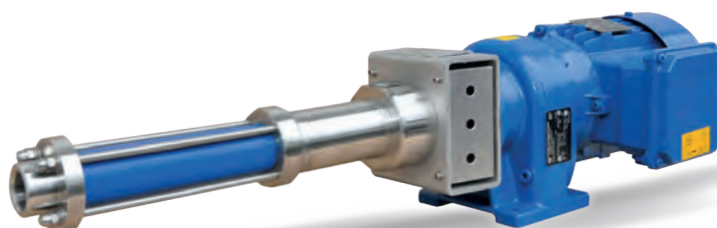
Three phase, gear or air operated motors in different power and protection classes.	✓
Pumps in Stainless steel 316Ti or Cast iron.	✓
Stators made of NBR, NBR light, EPDM, EPDM light, FKM, PTFE (depending on the type of medium).	✓
Flow rates up to 200 m3/h.	✓
Discharge pressures of 6, 12, 18 or 24 bar.	✓
A dry-run protection prevents the operation of eccentric screw pumps without any medium (optional).	✓



Low pulsation and gentle transferring of thin fluid to highly viscous media.

### Technical data

Gear motor suitable for operation with frequency inverter or gear motor that is adjustable via hand.	✓
Pumps in Stainless steel 316Ti.	✓
Stators in NBR, NBR light, EPDM, EPDM light, FKM, PTFE depending on the type of medium.	✓
Flow rates from 0.6 up to 1.200 l/h.	✓
Discharge pressures of 6, 12, 18 and 24 bar (four stages) depending on material.	✓
Direction of rotation can be changed.	✓



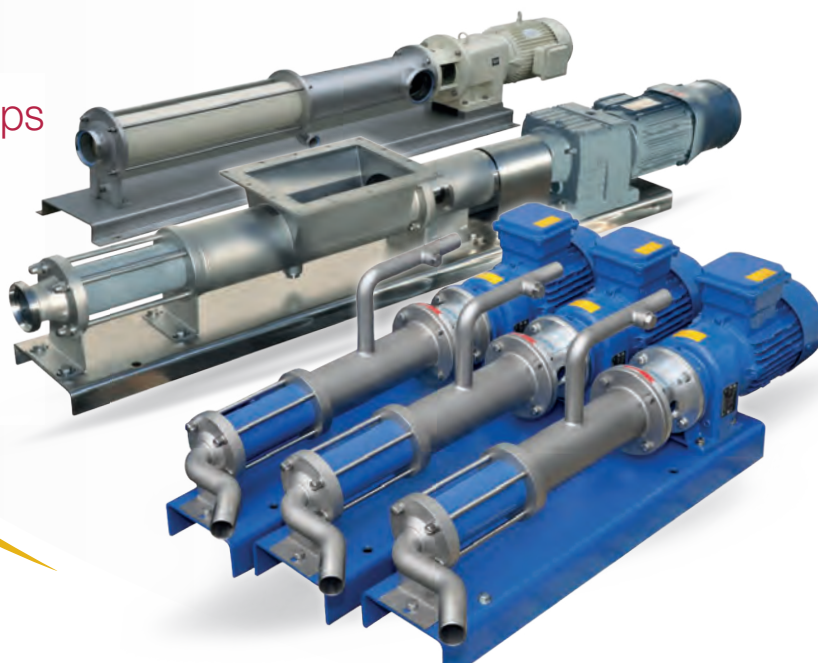
## Dosing pumps JP-7032-7120.2

High-viscosity dosing pumps of series JP-7032 to 7120.2 are suitable for pulsation-free transferring and dosing of small quantities of thin fluid to highly viscous, thixotropic, gaseous, solid and fibrous, aggressive and neutral media in almost all branches of industry.

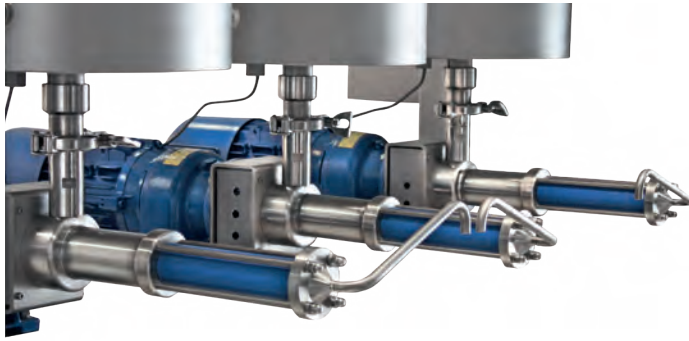
## Horizontal industrial pumps

Customised versions especially for the fruit processing industry or the wine making with funnel housing and feed screw.

Also for the textile processing industry special pumps can be offered.



# DOSING SYSTEMS



## Filling and dosing system for precise dispensing

Numerous customers from the food sector, as well as the packaging and chemical industry want to decant liquids not only out of barrels or containers but fill them precisely into small containers, also according to own recipes.

### Technical data multi-component system

Safe filling of small quantities.	✓
Fast filling at the touch of a button.	✓
Adjustable to different container sizes.	✓
Very high repeating accuracy.	✓
The filling can be controlled also via a scale.	✓
Horizontal eccentric dosing screw pumps with gear motor.	✓
Foot operated switch for starting the dosing procedure.	✓



## Spare parts for eccentric screw pumps

When it comes to wearing parts, quality and price are the most important factors, in addition to a short delivery time. The available spare parts program includes almost all known third-party products.

### Delivery program

We are pleased to support you at sourcing spare and wear parts for eccentric screw pumps.	✓
At this procurement process a short delivery time is important as well as quality and a good customer advisory service.	✓
Due to our good contacts in pump business we can deliver original spare parts from a lot of reputable manufacturers.	✓
Stainless steel rotors, e.g. SS 316Ti, SS 304. Hard chrome plating or ductile coating as an option.	✓
Stators in all popular elastomers, e.g. NBR (Nitrile), BR (Buna CB), NR (Natural Rubber), EPDM, FKM.	✓
Seals like mechanical seals, glands or o-rings.	✓





# AIR OPERATED DIAPHRAGM PUMPS

Air operated diaphragm pumps are suitable for nearly all areas of use. They are self priming, can run dry and are capable of pumping aggressive, flammable and viscous media (max. 55.000 mPas, depending on type of pump), also with particles or media containing gas.

## Technical data

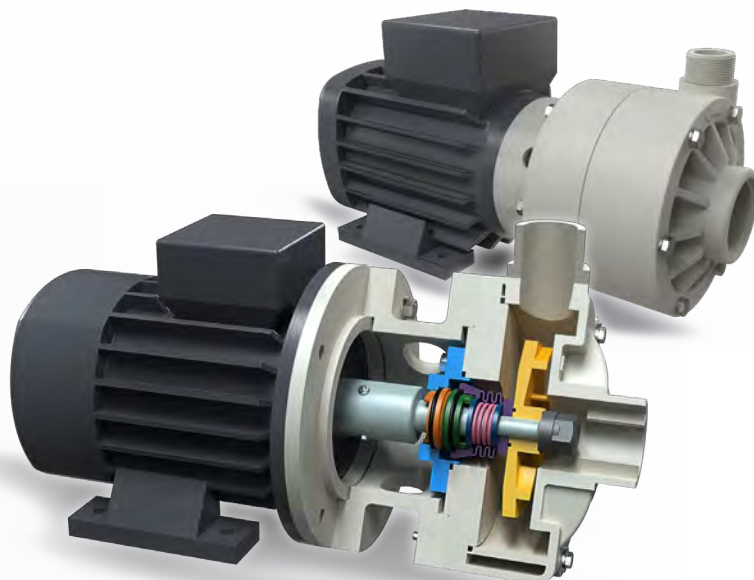
Pump bodies in Polypropylene, PVDF, Aluminium or Stainless steel.	✓
Flow rates from 5 l/min. (1/4") up to 1.050 l/min. (3").	✓
Max. operating pressure of 8 bar.	✓
Approval for Ex-Zone 2, conductive version for Ex-Zone1.	✓
Special executions for food and sanitary industry.	✓
Optional active pulsation dampeners to effectively reduce pressure variations on the discharge side of pump.	✓
Comprehensive range of accessories such as reciprocating piston meters, valves, maintenance unit and mobile trolley.	✓

# CENTRIFUGAL PUMPS

The pumps of the series JP-840 are suitable for fast transferring of chemicals while emptying containers or for applications where a medium has to be kept in circulation.

## Technical data

Three phase motor, 230/400 Volt, 50 Hz, IP 55, 2900 rpm.	✓
Pump body in Polypropylene or PVDF. On request versions in Stainless steel for hazardous areas or the food industry are available.	✓
Flow rates from 6 up to 75 m <sup>3</sup> /h.	✓
Delivery head up to 38 m.	✓
Maximum viscosity 500 mPas (at 20 °C).	✓
Special versions (higher flow rates, pumps made of Stainless steel, self priming, dry run safe or Ex-protected pumps) on request.	✓





# SEALLESS MAGNETIC CENTRIFUGAL PUMPS



## Technical data

Compact and robust construction, seal-less design, no leakage problems.	✓
Absolute operational safety, suitable for continuous operation, high efficiency.	✓
Flow rates up to 20 m <sup>3</sup> /h and head up to 70 m (PH-series).	✓
High chemical and thermal resistance, versatile application.	✓
Versions in Polypropylene, PVDF or ETFE.	✓

Magnetic centrifugal pumps are magnetically coupled centrifugal pumps in which the drive motor and the real pump are mechanically separated.

The pump is driven by contactless magnetic force transmission. This construction eliminates the shaft seal required in conventional centrifugal pumps, which regularly causes leakage problems. The pump casing is hermetically sealed by the construction of the magnetic centrifugal pump, thus guarantees a high operating safety as well as a long lifetime.

# VERTICAL CENTRIFUGAL PUMPS

Vertical centrifugal pumps are suitable for fast transferring of chemicals when emptying containers or tanks.

The availability of different materials of construction – depending on chemical and thermal resistance of medium or environment – guarantees an absolute reliability of operation as well as a long lifetime of the pump.

## Technical data

Three phase motor, 230/400 Volt, 50 Hz, IP 55, 2900 rpm.	✓
Pump bodies in Polypropylene or PVDF.	✓
Pump tube lengths 250, 500, 800, 1.000 and 1.250 mm.	✓
Flow rates from 6 up to 170 m <sup>3</sup> /h.	✓
Delivery head up to 46 m.	✓
Maximum viscosity 500 mPas (at 20 °C).	✓



# DIESEL AND FUEL OIL PUMPS



Diesel and heating oil pumps are especially suitable for refueling the motors of vehicles that are driven with diesel like tractors, agricultural machines and machines for construction work, trucks and motor boats. They also facilitate the filling of heating oil out of drums and tanks.

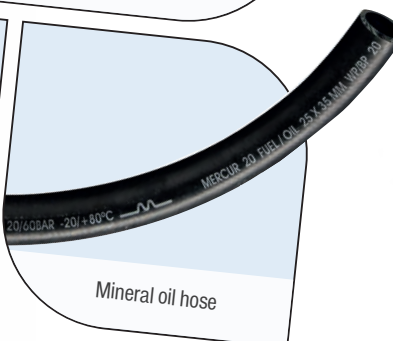
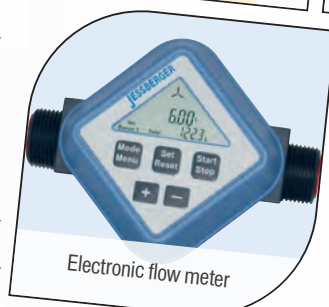
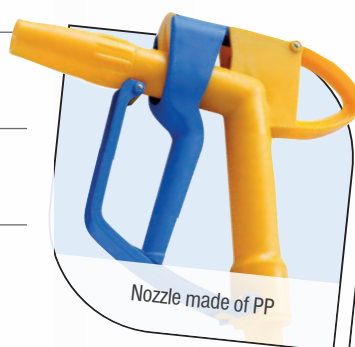
## Technical data

Protank 30 (at the beginning non self priming).	✓
Protank 50 (self priming).	✓
Pump models in 230, 12 and 24 Volt.	✓
Flow rates from 31 up to 50 l/min.	✓
Delivery head from 9 up to 17 m.	✓
Set with 1,6 m suction hose, 4 m discharge hose and nozzle (manual or automatic one).	✓
Flowmeters as an option.	✓

# PUMP ACCESSORIES

## Range of accessories

Drum adapters, emission proof adapters, thread adapters, screw caps for IBCs.	✓
Strainers made of PP, Stainless steel or PVDF (for protection of drum pump if particles are present).	✓
Manual nozzles made of PP, PVDF, Aluminium or Stainless steel, automatic nozzles for fuel, diesel or urea.	✓
Hoses in different materials for transferring nearly all kind of media (PVC-hoses, Universal chemical and solvent hoses, multi purpose chemical hoses, mineral oil and food grade hoses, etc.).	✓
Turbine wheel or oval gear flowmeters made of PP, PVDF, Aluminium or Stainless steel (also Ex-protected), impulse output or preselection of flow rate for controlling a pump or magnetic valve available as an option.	✓
Grounding cable, wall hangers.	✓





# FILLING SYSTEMS

## Technical data

Vertical eccentric screw pump JP-700 with gear motor.	✓
Follower plate made of Stainless steel SS 304 with sealing lip made of silicone rubber.	✓
Clamping ring with stator cladding tube for connecting of the pump.	✓
Hand operated vent valve.	✓
Pneumatically actuated vent valve.	✓
Base plate with lifting column made of Stainless steel SS 304.	✓
Lifting device with pump support arm made of Stainless steel SS 304.	✓
Double acting pneumatic cylinder.	✓
Cabinet with electrical control.	✓

Drum emptying stations are used for a clean and quick emptying of open drum and containers with highly viscous to pasty media that no longer flow to the pump themselves.



The drum pump manufacturer JESSBERGER offers a cost-effective filling system made of Stainless steel, which enables convenient and simple filling or dosing from 200 liter drums or IBC containers (1.000 liters) safely, conveniently and cleanly into smaller vessels



## **JESSBERGER GmbH**

Jaegerweg 5-7  
D-85521 Ottobrunn

Tel.: +49 (0) 89 - 66 66 33 400

Fax: +49 (0) 89 - 66 66 33 411

E-mail: [info@jesspumpen.de](mailto:info@jesspumpen.de)

Web: [www.jesspumpen.com](http://www.jesspumpen.com)

 [facebook.com/jessbergerpumpen](https://facebook.com/jessbergerpumpen)

 [twitter.com/Fasspumpe](https://twitter.com/Fasspumpe)

 [linkedin.com/company/jessberger-gmbh-fasspumpen](https://linkedin.com/company/jessberger-gmbh-fasspumpen)



[www.jesspumpen.com](http://www.jesspumpen.com)

