

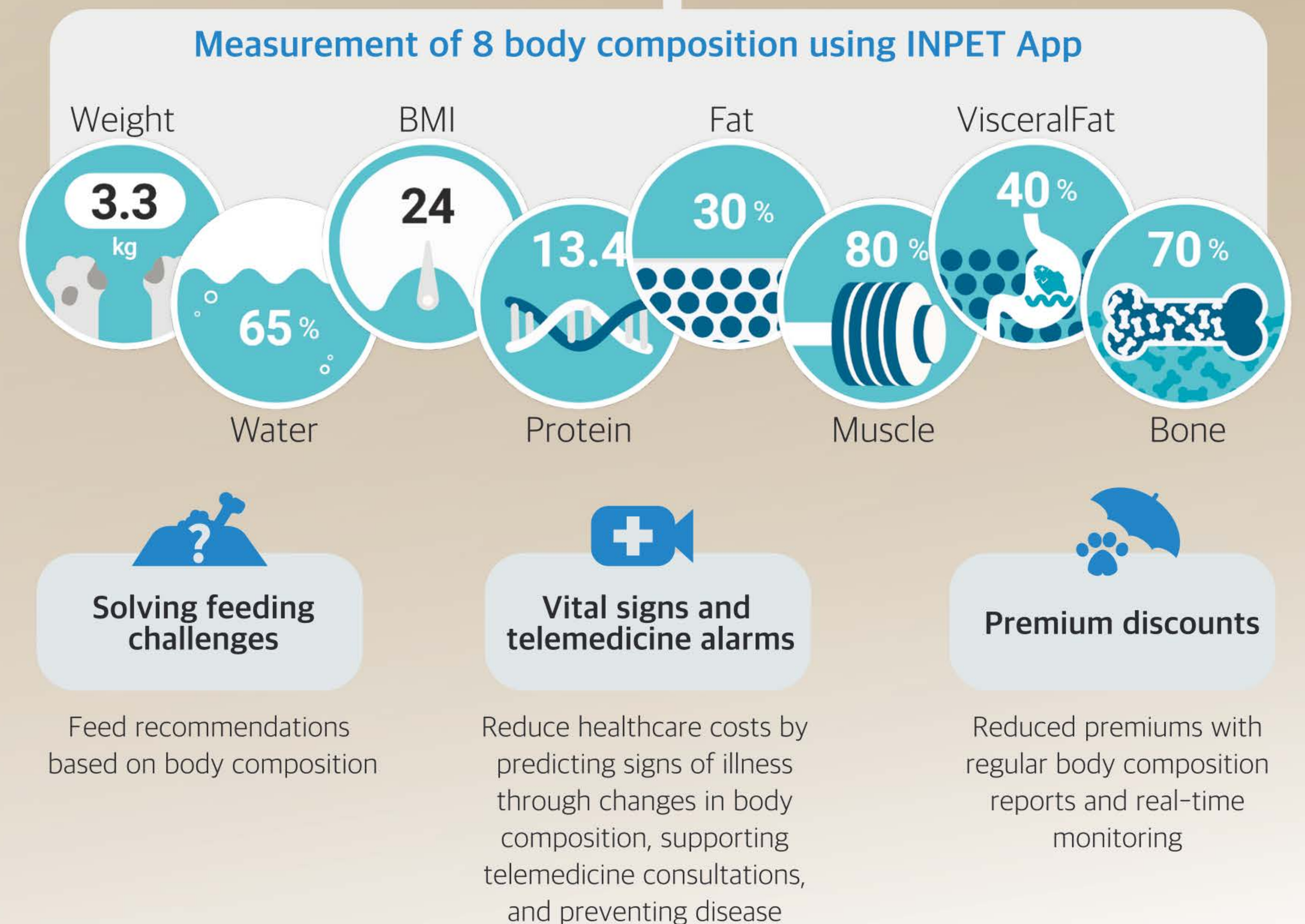
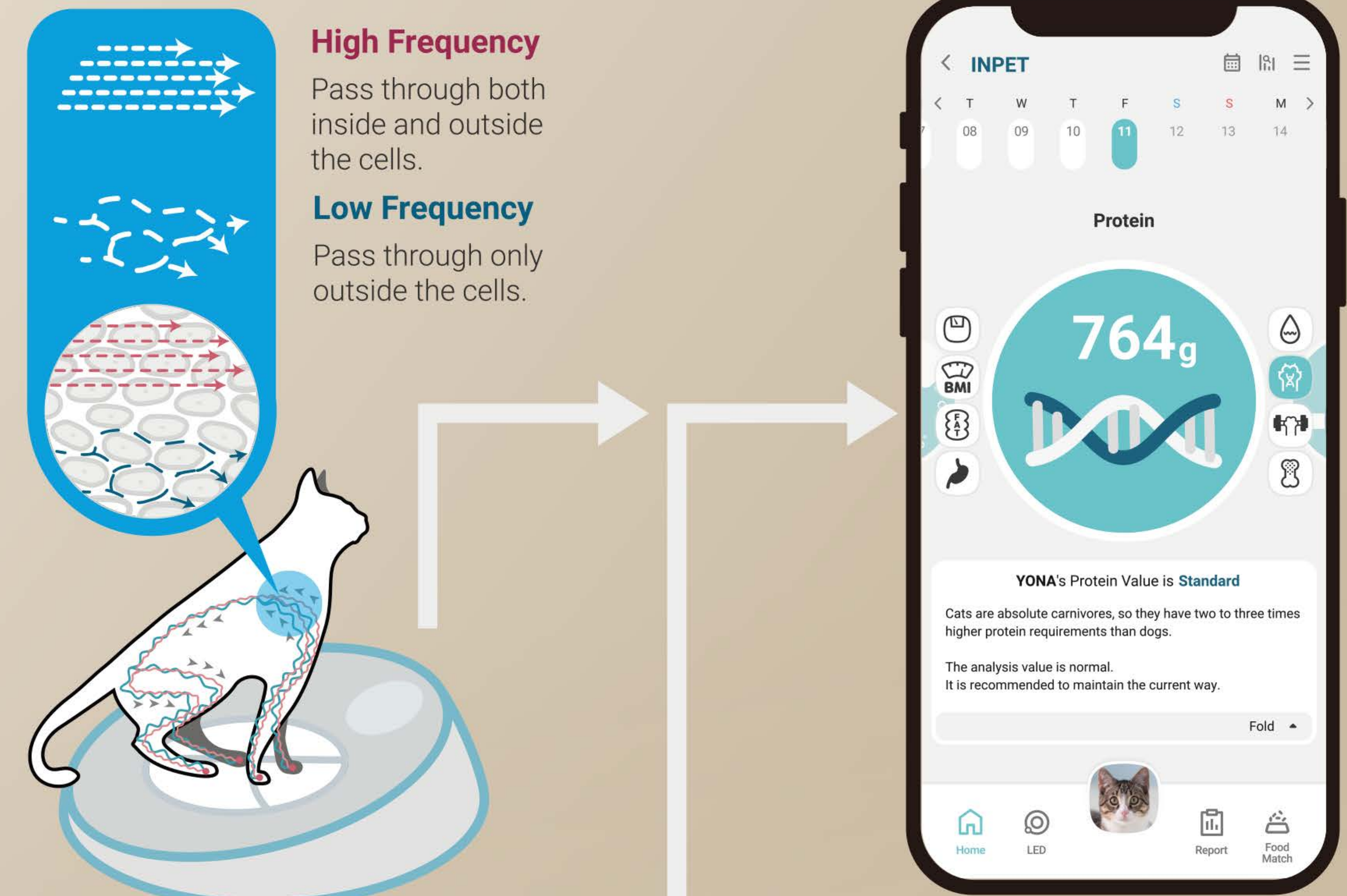
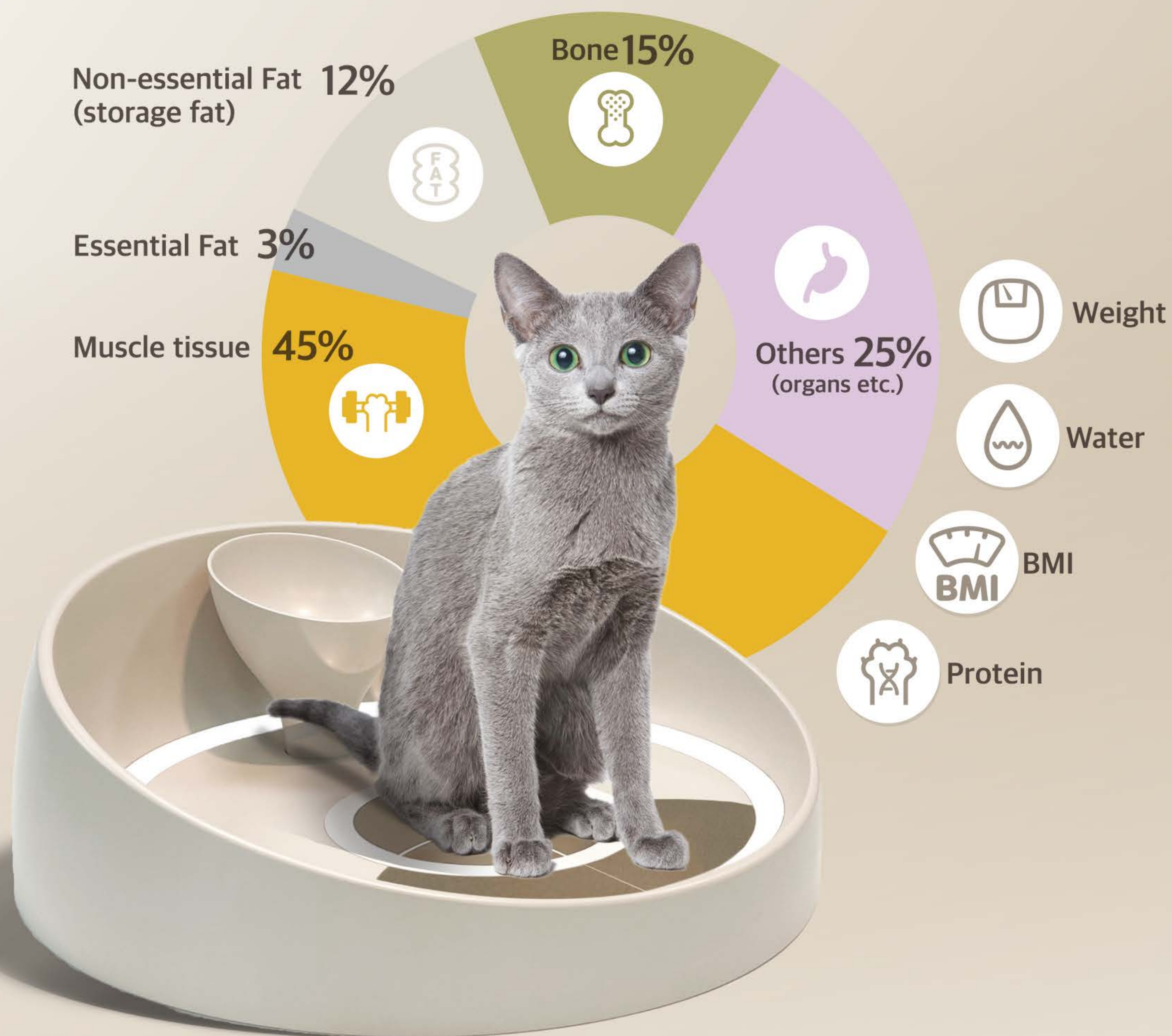
the Little Cat

# BIA (Bioelectrical Impedance Analysis) based on Cat Body Composition Monitor

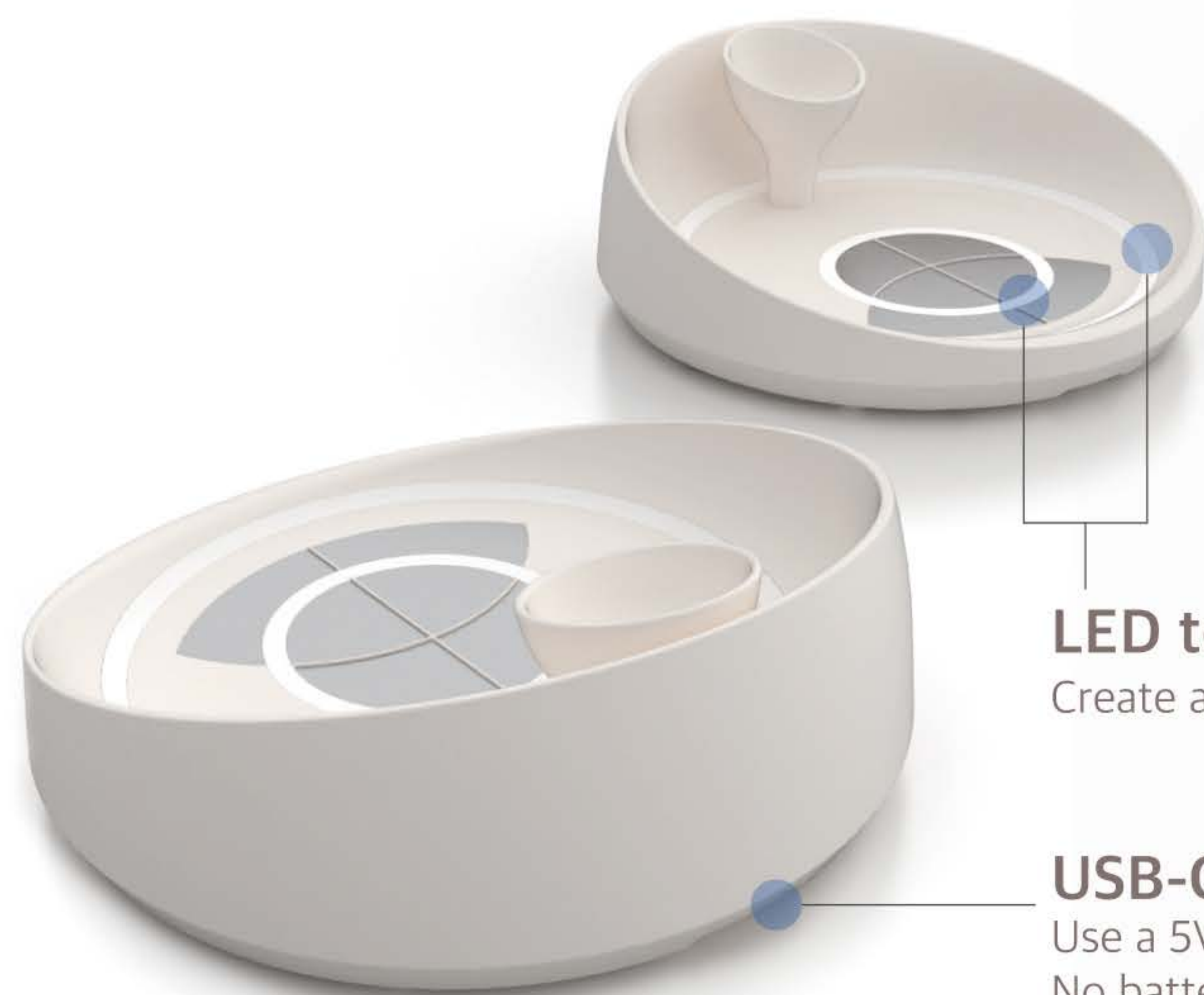
Body composition monitor using cat's instinct

Taking advantage of the cat's instinct to enter the circle, it automatically measures body composition quickly and accurately through the paw pads when the paw enters the circle.

Monitor 8 body compositions with a dedicated app.  
(Body water, Visceral fat, Subcutaneous fat, Protein, Muscle, Bone density, BMI, Weight)







### LED to attract the cat

Create and change your cat's favourite colours

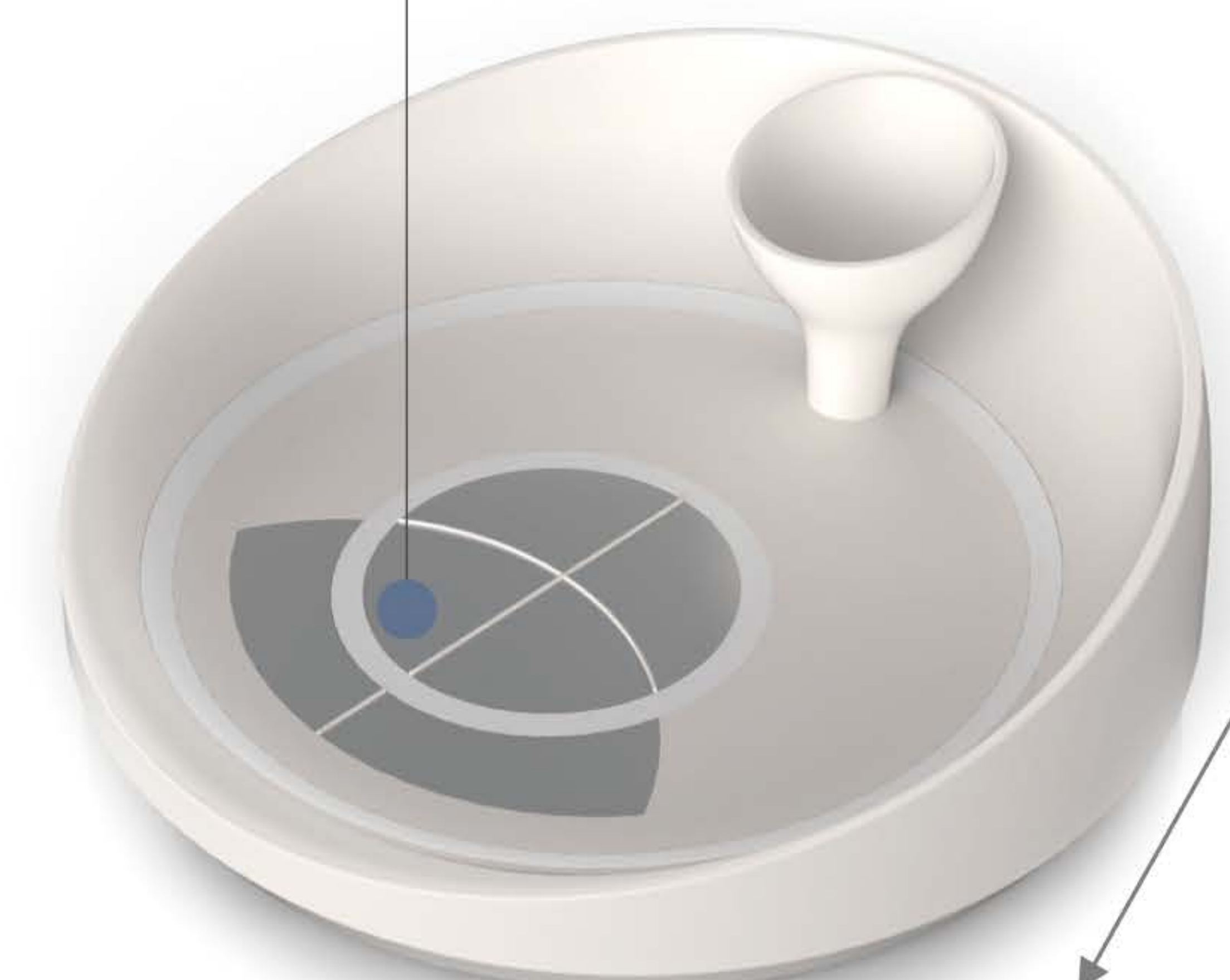
### USB-C Chargers

Use a 5V 2A rated charger  
No battery, always on

### Food bowl



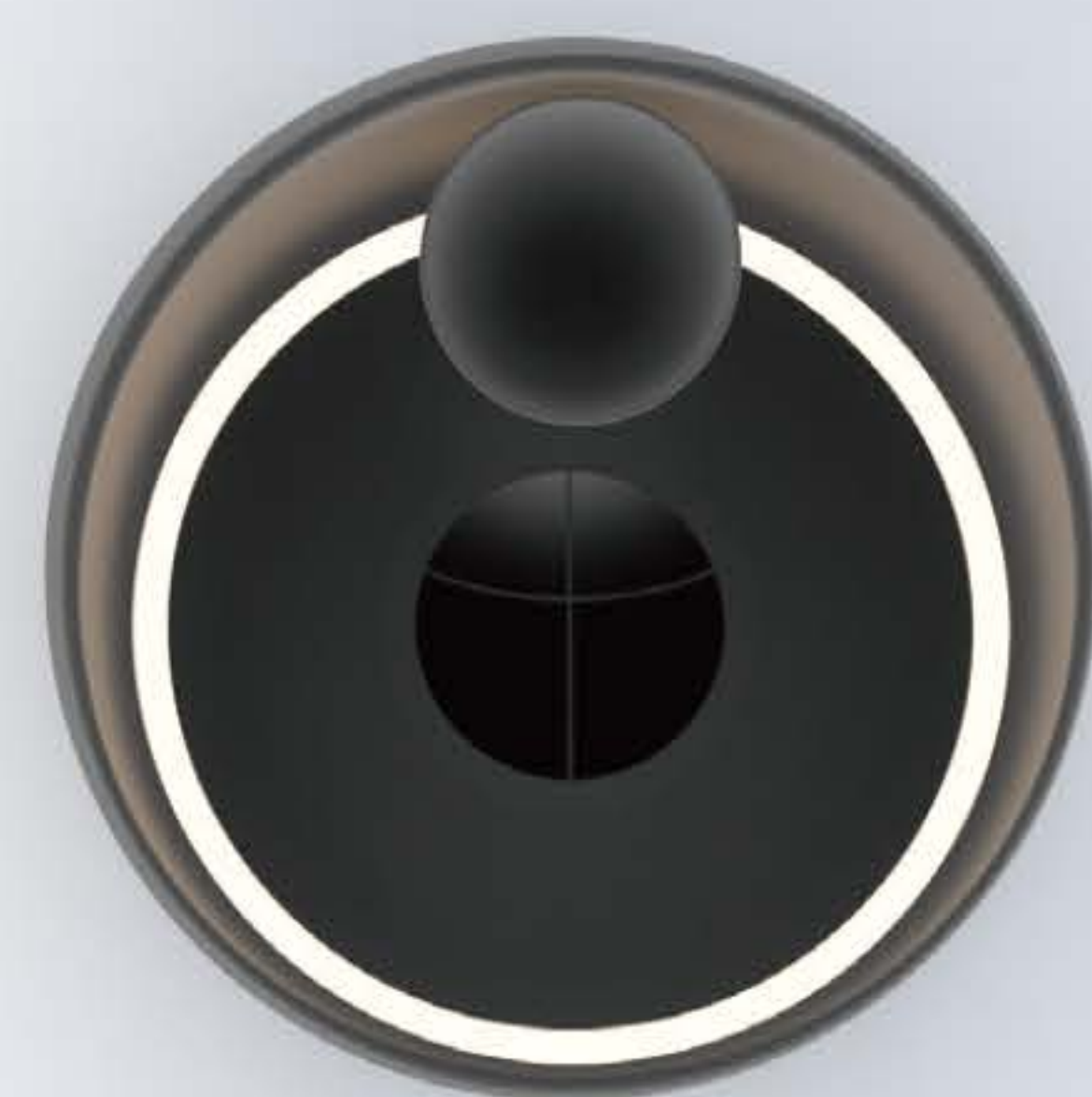
### Body composition measuring electrodes



210mm  
(7.8inch)

550mm  
(21.6inch)

550mm  
(21.6inch)



Model	INPET (INPET CV1)
Size	• Product Size: 550mm x 550mm x 210mm
Weight	• Net Weight: 4.5kg • Gross Weight: 5.5kg
Material	• Cover & Bottom & Food bowl: ABS • Inner & Outer Circle: PP • Electrode plate: Iron • Package: Corrugated cardboard + PE FORM
Feature	• When a cat eats food, it measures the body water with the impedance value obtained by naturally flowing a small alternating current on the cat's feet that the cat does not recognize, and delivers various information on the body water composition to consumers through APP.
Notice	• BLE Version: 5.0 • HS CODE: 9031.80



INPET

INPET Introduction Movie

