



Token

www.tokengroup.com

Wuhu Token Sciences Co., Ltd.

Ganzhou DPT Technology Co., Ltd.



Company Profile



Wuhu Token Sciences Co., Ltd.

Token Sciences is a professional manufacturer dedicated to producing new types of display and materials, also committed to R&D, manufacturing and marketing of touch panel modules, ultra-thin display panels, and vacuum electroplating coating in display area.

The powerful comprehensive strength takes Token be one of the biggest industry leaders, Token's high-end customers cover both domestic and oversea regions.

Founding Time: April, 2000

Technology Leading In The World

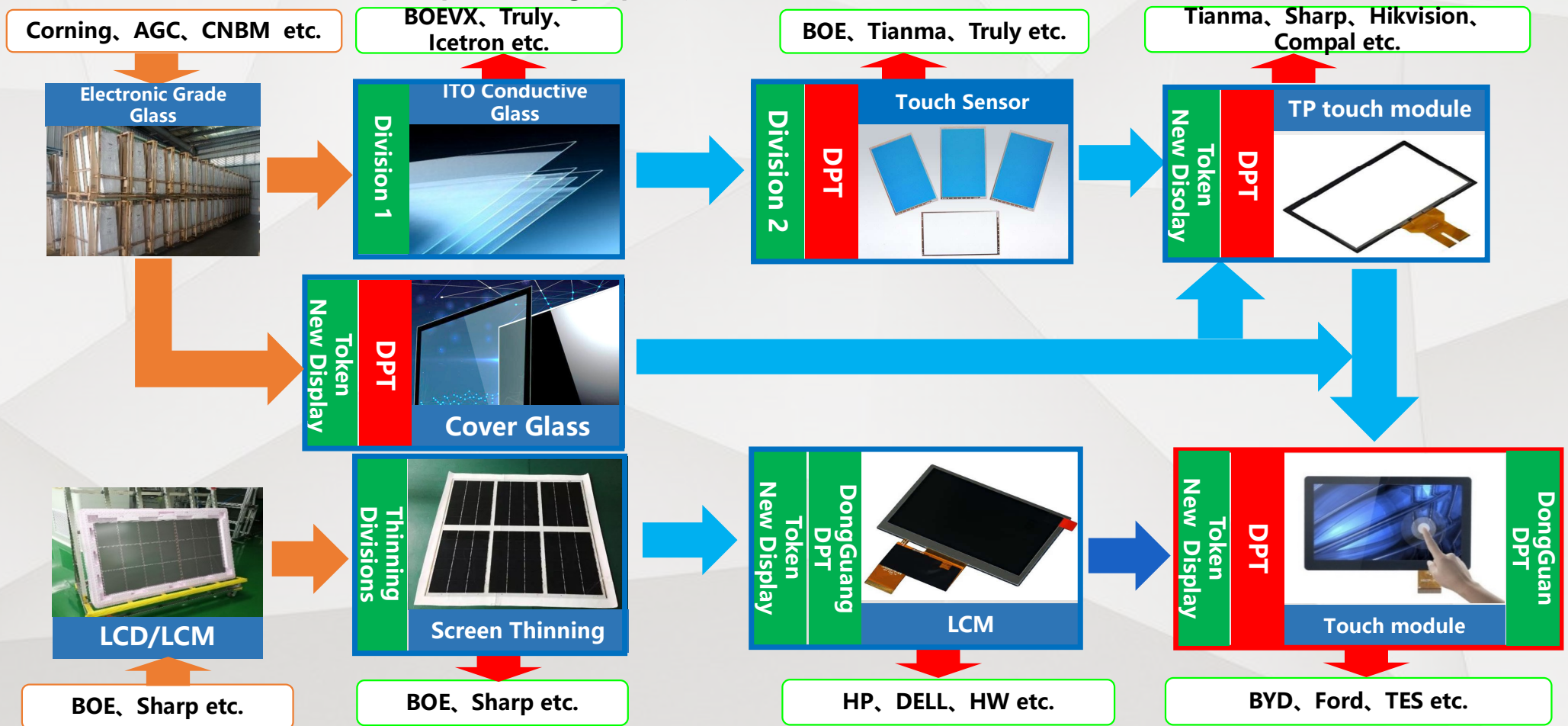
Stock Code: 300088

6 Major Production Bases With More Than 20 years

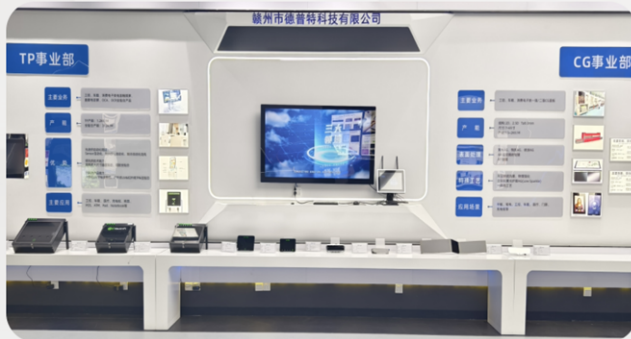
Group integrated Production



- Enterprise with the most complete industrial chain in China, can meet the needs of different customers, effectively solve technical bottlenecks and provide high-quality solutions.



Ganzhou DPT Factory

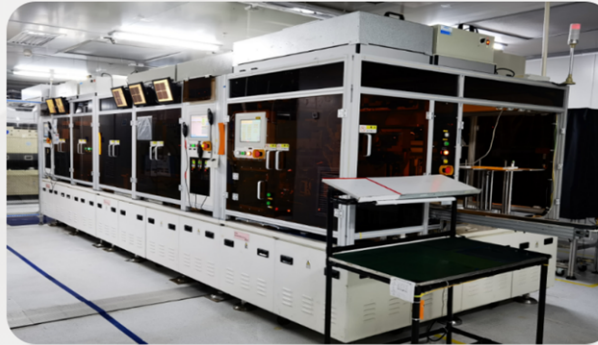


➤ Main business

Capacitive touch sensor/touch panel/touch module
2D & 2.5D CG cover
Ceramic Ink CG cover

➤ Capacity and configuration

TP Capability: 1.5KK / M ;
Full lamination Capability: 312K / M;
CG cover Capability: Large-Mid size 800~1200K/M



➤ Advantages

①**High-Precision** OCA/SCA/ASF automated lamination machine and large size full lamination production lines

②**Advanced technology capabilities:** High-Precision large size curved TP module lamination, OCR dispensing full lamination, ceramic ink CG cover

③**Innovative Product Development:** Outdoor Anti UV TP & Full Lamination, Anti UV & Anti Infrared TP & Full Lamination 、 customized AG CG cover

➤ Applications

Industrial, Auto, medical, commercial, charging、 Pad, NB, etc.

Large/Curved TP Lamination

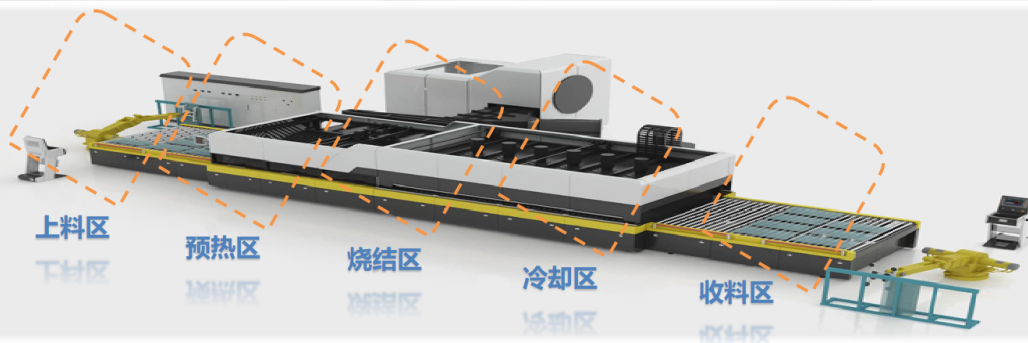


Lamination Capability:

- 1.Type: Normal square type、C-type、V-type、J-type and Curved type, etc.
- 2.Sensor: 3A film、G sensor 、Film sensor 、 OC(BLU assembly later)
- 3.Size: Max:1300*800
- 4.Precision: $\pm 0.3\text{mm}$
- 5.Manufacturing Capability: 15K/M



Physical Strengthen/Ceramic ink



Physical strengthen: Heat the raw glass in furnace to a temperature close to the softening point of the glass, where the glass's own deformation eliminates internal stresses. High-pressure cold air is then blown onto both sides of the glass using multi-nozzle heads, rapidly and uniformly cooling it to room temperature. After high-temperature tempering, the ink firmly melts and bonds with the glass, achieving color adhesion and durability.

- ◆ After ceramic ink sintering, the ink melts into the glass substrate, achieving permanent adhesion to the substrate, effectively solving the problem of decorative plate peeling in outdoor products.



Outdoor Turnstiles,
Access Control System



Automatic Parking
System



Outdoor Surveillance
System, Solar Energy



Outdoor Vending
machine



(DC) Charging
Pile

Free AG

Free AG

- Etching AG process is with even pitting, and easily cause sparking when large size
- AG film lamination or AG coating, the film layer is easily to peel off
- Free AG can be customized according to customer requirements to selectively treat specific areas with AG processing,. Moreover, through MASK design, precision can be accurately controlled, effectively resolving sparking issues.



Low sparking



High resolution



Customized



Eye-protection

	Free AG	Etching AG
Spark	Yellow light process to precisely control the size of the protrusions, low spark dots	Uneven AG performance, and easily sparking when large size
Customized	Achieved through yellow light process, with high precision, a tolerance of $\pm 200\mu\text{m}$.	Achieved through screen printing of acid-resistant ink, with low precision, a tolerance of $\pm 200\mu\text{m}$.
Performance	Good	Poor

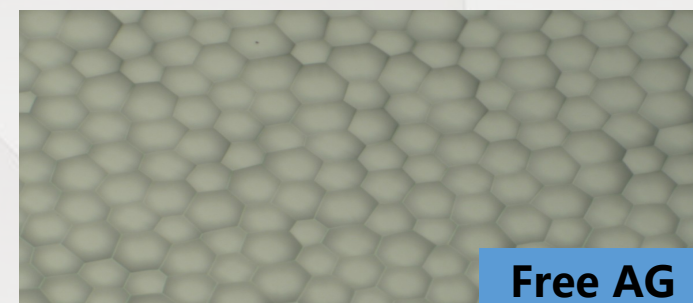
Application



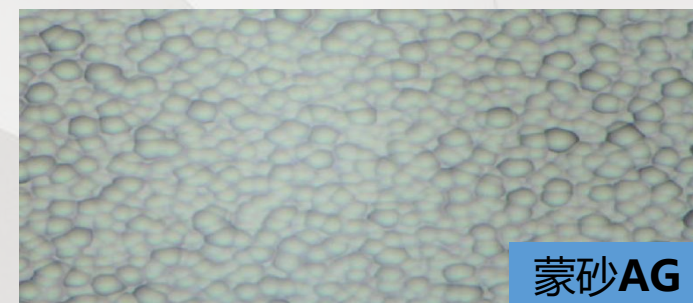
M2



S7



Free AG



蒙砂AG

Thank you
