

IMPROVE TURF HEALTH & SAFETY

Campey
TURF CARE SYSTEMS
QUALITY GROUND CARE EQUIPMENT

OFFICIAL
AIR2G2
BY FOLEY COMPANY
DISTRIBUTOR
campeyturfcare.com

AIR2G2

Player Safety Is The Priority.

A comprehensive approach involving field managers to the players themselves, is essential for creating a safer playing environment on grass surfaces.



FOLEY

IMPROVE PLAYER SAFETY



REDUCE CONCUSSIONS



REDUCE JOINT STRESS



REDUCE PLAYER INJURIES

IMPROVE TURF HEALTH



RELIEVE TURF COMPACTION
& IMPROVE PERMEABILITY



IMPROVE WATER
ABSORPTION



PROMOTE DEEPER
ROOT GROWTH



NO DOWNTIME
OR CLEAN UP

PURSUE PERFECT | FOLEYCO.COM

Campey
TURF CARE SYSTEMS
QUALITY GROUND CARE EQUIPMENT

Campey supply market leading, innovative turf care machinery worldwide, we're continually researching new techniques and refining existing practices to help turf care professionals achieve perfection.

Call +44 (0)1260 224568, email info@campeyturfcare.com or visit www.campeyturfcare.com

FOLEY AIR2G2 - 336



OFFICIAL
AIR2G2
BY FOLEY COMPANY
DISTRIBUTOR
campeyturfcare.com

PRODUCT INFO

LENGTH	88" (224cm)
WIDTH	52" (132cm) Folded 88" (224cm) Extended
HEIGHT	41" (105cm) Without Probes 58" (148cm) With Probes
ENGINE	19hp Kohler® Command Pro
AIR COMPRESSOR	2Stage Ingersoll Rand®
AIR COMPRESSOR CAPACITY	24 CFM @ 175psi
TIRES	Smooth Turf Friendly
PROBES	3
PROBE LENGTH(S)	8" (20cm) & 12" (30cm)
DRIVE	Hydrostatic
BATTERY	12 VOLT, 350 CCA
FUEL CAPACITY	6 Gallon (3.8 Liter)

OPTIONAL EQUIPMENT

Air2HP - Handheld Probe
Air2Go Trailer

What AIR2G2 Can Do

The AIR2G2 operates on a unique principle of using high-pressure air to fracture compacted soil layers beneath the turf without causing surface disruption.

This technology is designed to alleviate soil compaction, improve soil structure, and enhance root growth by injecting pressurized air into the soil profile.

Key Features

Probe Injectors: Equipped with 3-probe injectors that are inserted into the ground delivering bursts of pressurized air into the soil, creating fractures and voids.

Air Compressor: The air injection process relies on a high-capacity air compressor that generates the necessary pressure to inject air into the soil.

Aeration Depth and Spacing: Operators can adjust the depth and spacing of the aeration tines based on the specific needs of the turf and soil conditions. This customization allows for targeted aeration at varying depths.

Minimal Surface Disturbance: Unlike traditional core aeration methods that remove soil plugs from the surface, the AIR2G2 minimizes surface disruption. This can lead to quicker turf recovery and reduced downtime for the playing surface.

Non-Invasive: AIR2G2's technology aims to provide aeration benefits without causing significant disruption to the turf surface. This is particularly important for maintaining high-quality playing surfaces on golf courses and sports fields.

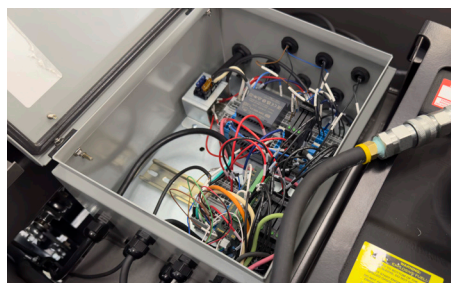
Soil Health Benefits: By relieving soil compaction and improving soil aeration, the AIR2G2 promotes better water infiltration, nutrient absorption, and root development. This can lead to healthier turf grass and improved playing conditions.

HSBC GOLF
Business Forum

HSBC
INNOVATION AWARD



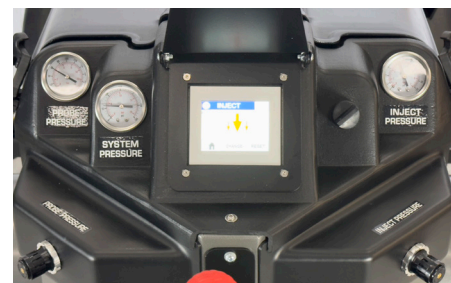
NEW Features



LARGER MORE ACCESSIBLE ELECTRICAL BOX



ROBUST EASY TO REMOVE HOOD



REDESIGNED USER CONTROL DASHBOARD



©2023 FOLEY COMPANY. ALL RIGHTS RESERVED.

PURSUE PERFECT | FOLEYCO.COM



Campey supply market leading, innovative turf care machinery worldwide, we're continually researching new techniques and refining existing practices to help turf care professionals achieve perfection.

Call +44 (0)1260 224568, email info@campeyturfcare.com or visit www.campeyturfcare.com