



# 安徽金视界光电科技有限公司

Goldenvision Opto Electronic Co., Ltd



[www.goldenvision-lcd.com](http://www.goldenvision-lcd.com)

since 1995



# ABOUT US

01

Company profile

02

Honors

03

Core Management Team

04

Product

05

Customer



**Company**

---





## Company profile



Goldenvision is a China National High-Tech Enterprise

- Mainly engaged in the R&D, manufacturing and sales of LCD/LCM, and is currently one of the main LCD supporting suppliers in China.
- Employee over 800, engineer up to 200, workshop area up to 100,000 square meter
- The products currently supplied include TN, HTN, STN, CSTN, monochrome COG module, TFT module, resistance and capacitance TP, backlight, etc. It is a one-stop service manufacturer with relatively complete coverage of LCD devices in China.
- The company has passed the IATF16949 quality system certification, ISO9001:2015 quality system certification, ISO14001:2015 environmental management system certification, and all products meet the environmental protection requirements of the EU green directive RoHs.



1

**Vision**

**Become a first-class LCD product and supporting supplier**

2

**Mission**

**Create excellence and lead the vision**

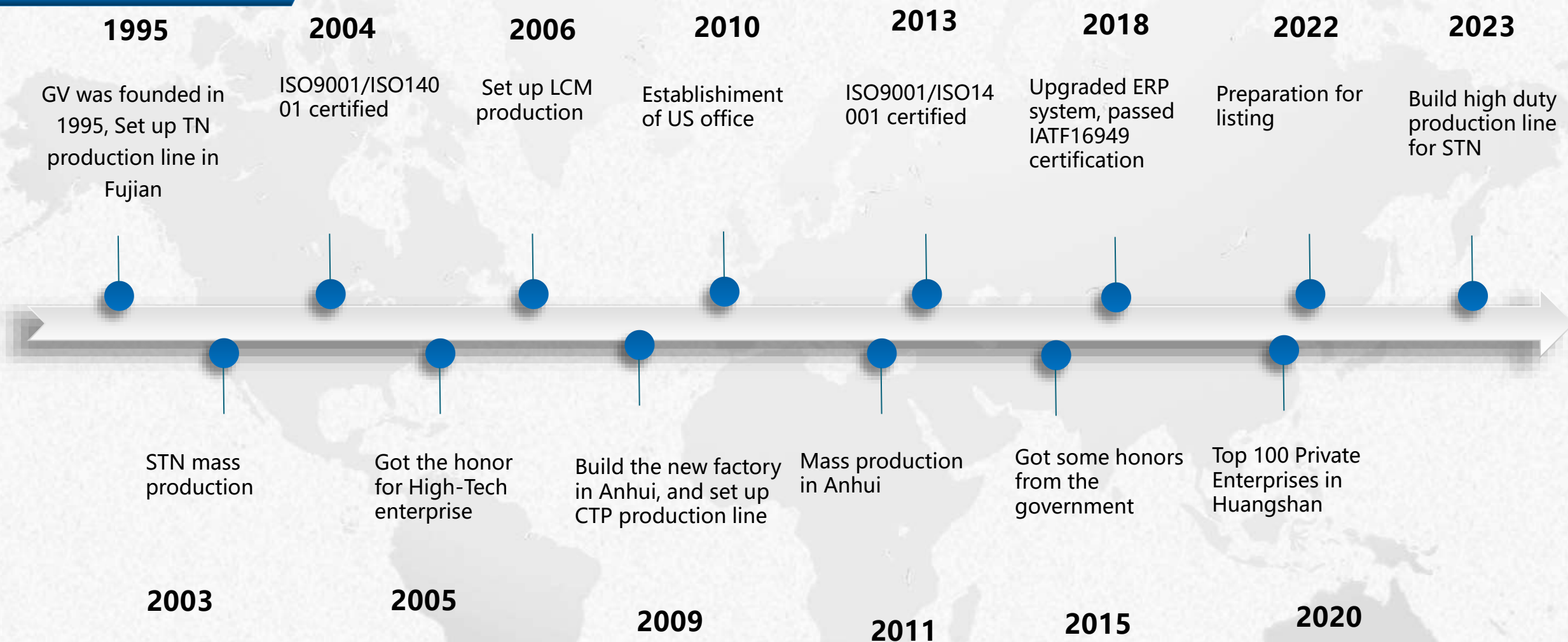
3

**Values**

**Innovation, efficiency and trust**



## History







## High-quality



### LCD CLEANING

3 lines for automatic cleaning machine



### COG BONDING

5 full-automatic lines, 7 semi-automatic lines

### FULL-AUTOMATIC FOR POLRIZER

Total 15 lines, 9 lines with AOI Testing



### AUT-PIN

10 full-automatic lines  
4 semi-automatic lines





## High-quality

## PRE-PROCESS &gt;



Wet process automatic from production feeding, inspection only needs 4 people for single shift.

## POL LINE &gt;



From white glass loading and AOI testing to automatic plating, an employee can operate 2 to 3 production lines, and the per capita output is nearly 4 times higher.

## PIN LINE &gt;



Transformation of automatic PIN line, the goal is to achieve the product from PIN loading to packaging automatic, from the original semi-automatic line of 7 people to 2 people.

## LCM LINE &gt;



COG bonding from Plasma terminal cleaning to FOG automatic. The goal is to reduce from 9 people to 3 people.





High quality



Photoelectric parameter tester



Quadratic element measure



UV performance tester



Pressure Test



ESD



UV Equipment



High quality



Bending Equipment



Hi-Temp Test



Low-Temp Test



Hi-Temp, RH Test Equipment



Salt spray



Drop Test



## Product capacity

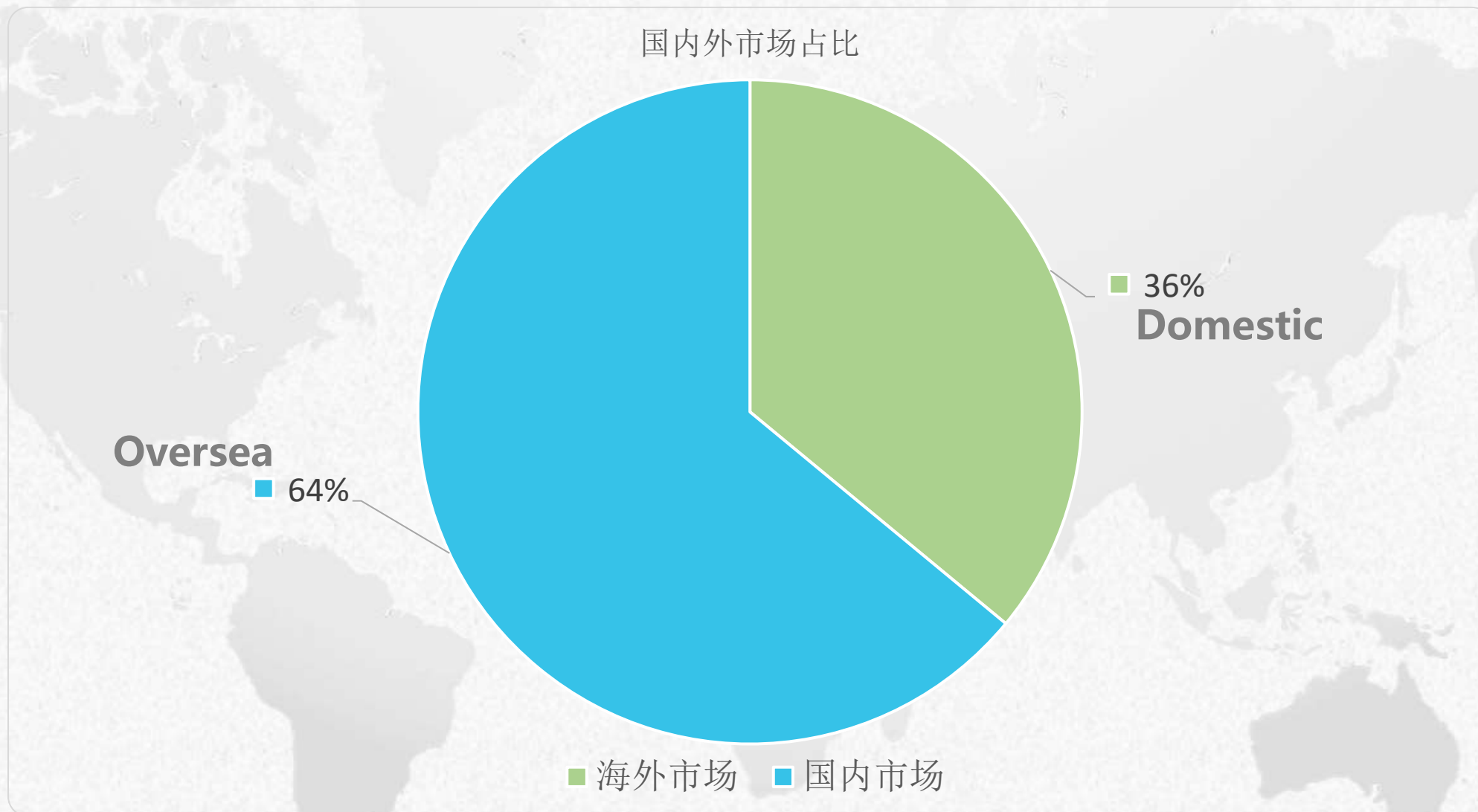
LCD	600K Sheets (14" X 16" )/Month	355*406MM ITO
LCD-贴片	9KK/Month	
LCD-PIN	5KK/Month	
LCM	3KK/Month	

	LCD	LCM	TP	4 in 1 TFT	OEM(software)
Design	1~2 days	3~6 days	4~6 days	4~6 days	2~6 months
Sample	2~3 weeks	4~6 weeks	4~6 weeks	4~8 weeks	
MP	2~3 weeks	4~6 weeks	4~6 weeks	4~8 weeks	



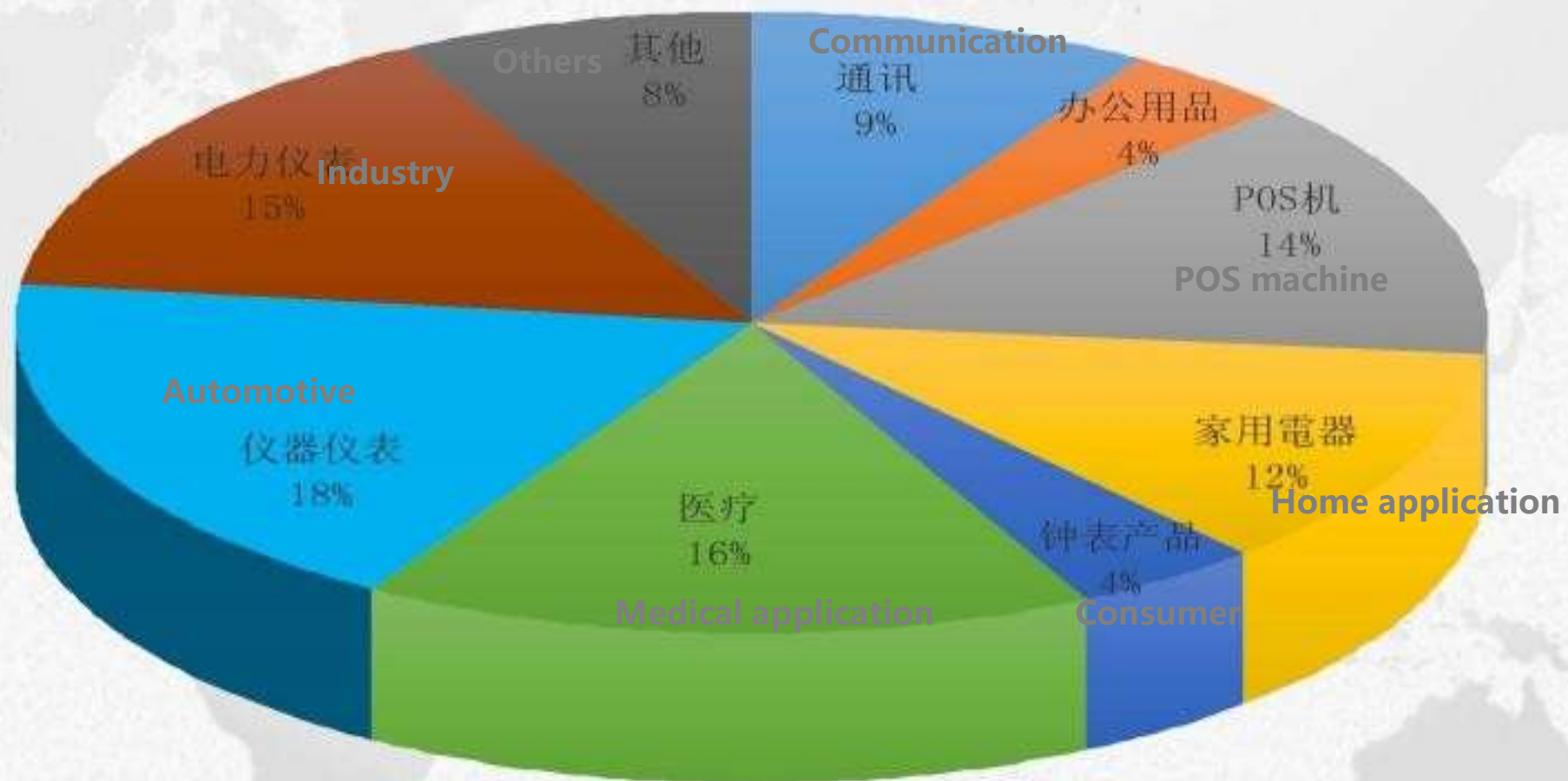


## Market share





## Product Application





## Certification



Technology  
qualifications

The company has passed ISO9001:2015 quality system certification and ISO14001:2015 environmental system certification. TS16949 quality system certification.





**Company Honor**



## Honors

## PATENT

Technical  
Patent:  
achieved 56





## Honors



Top 30 Private Enterprises in  
Import and Export in Mount  
Huangshan

Top 100 Private  
Enterprises in Mount  
Huangshan

Top 20 Taxpayers in  
Xiuning County

Employment poverty  
alleviation in Xiuning  
County base

National and local joint  
engineering laboratory of  
flat panel display  
technology

Mount Huangshan Small and  
Medium sized LCD Screen  
Engineering Technology  
Research Center

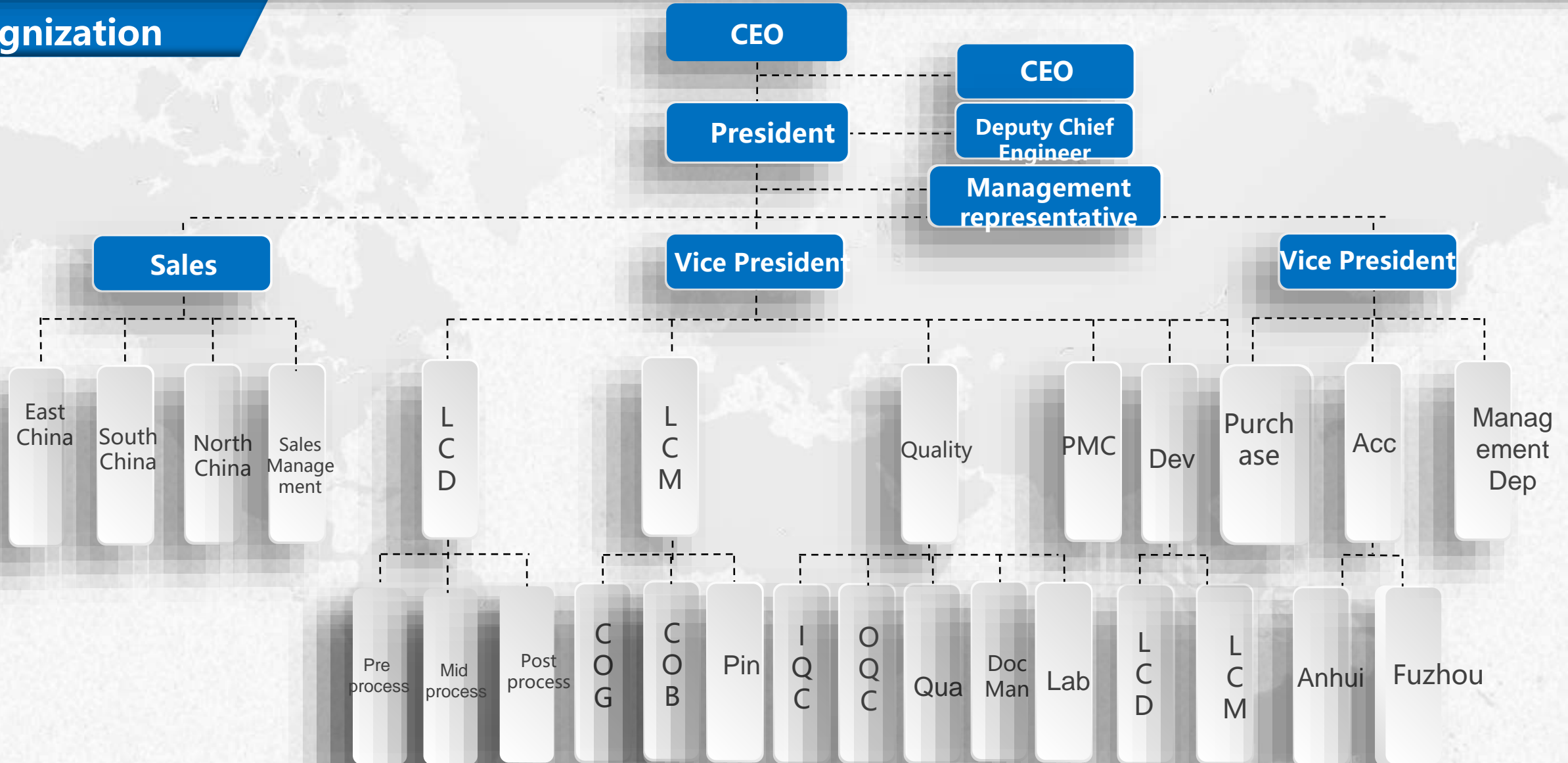




**Company team**



## Organization





## Plants







# Product

---



## Products



● High reliability product

● VA

● (F)STN

● High duty COG

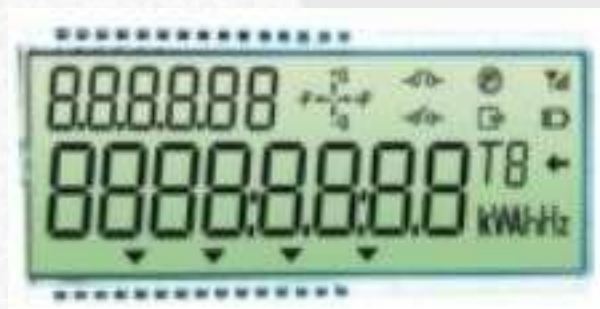
● COB

● TFT/OLED





## High reliability product



### High reliability

It can pass the reliability test of 1000 hours at 85°C and meet the lifetime up to 20 years.

### Wide temperature and good UV resistance

To meet the operating requirements of -45 to +85°C, the UV performance can meet the 20-year usage requirements.

### Wide range of use

Widely used in photovoltaic, vehicle, electric meter, gas meter and other industrial equipment.





VA



### High contrast

Achieve high contrast display and a variety of color font display

### Wide viewing angle

Angle of view > 60° , left and right

Angle of view > 45°

### Wide range of use

Widely used in vehicle, home appliances, medical and other equipment



(F)STN

**Duty≤1/128**

Segment or dot is optional

**Viewing angle**

Viewing angle is 20-~30° wider than TN/HTN

**Connection**

Zebra, rubber, pin





GV Introduction

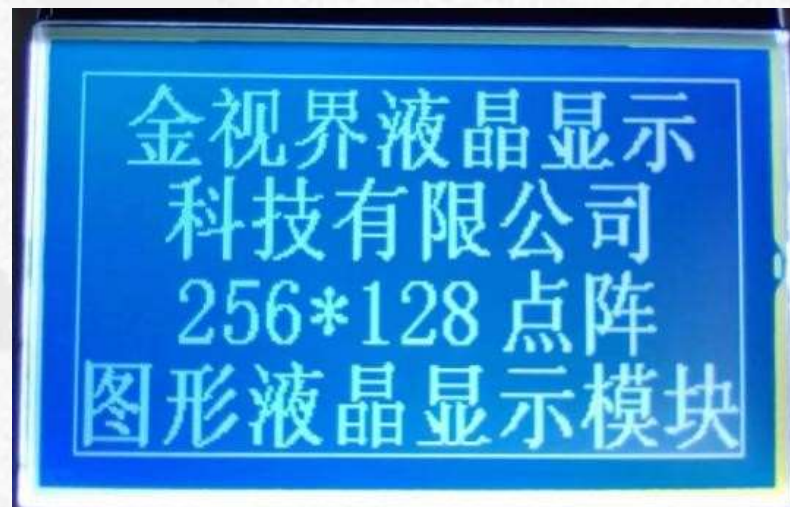
Honor

Team

Product

Customer

## High duty COG



**Duty**  $\leq 1/128 \sim 1/320$

High resolution, high contrast



**Viewing angle**

Viewing angle is  $20^{\circ} \sim 30^{\circ}$  wider than TN/HTN



**Connection**

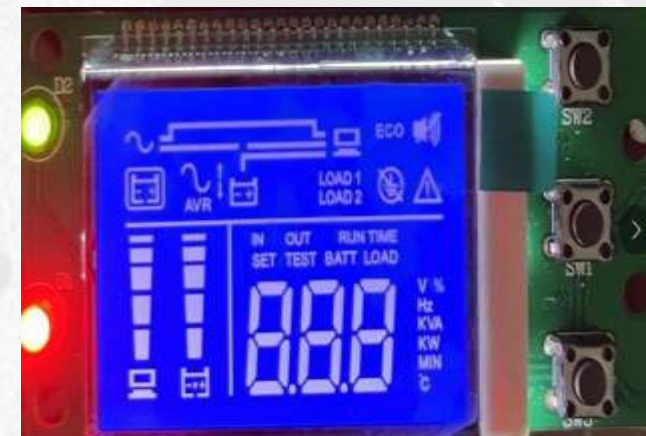
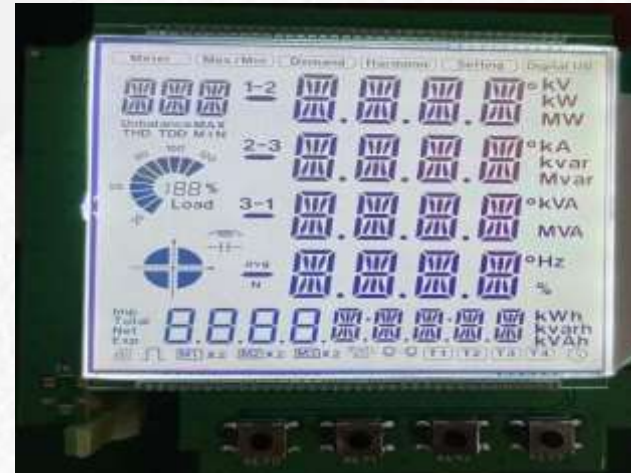
FPC, pin







## COB



## Technical

Strong development ability, can meet the requirements of customers

## Product type

All kinds of Mono TN/HTN/STN/FSTN display

## Wide range of use

Widely used in industrial meters



TFT

Industry

Medical

Size

2.4"/2.8"/3.5"/4.3"/5"/7"  
10.1"

&lt; 输液泵

尺寸: 7 inch  
分辨率: 280\*1424  
视角: 全视角/IPS

急救AEDS &gt;



呼吸机 &gt;

size: 2.8 inch  
分辨率: 240\*320  
视角: IPS

血压计 ^

尺寸: 4.3 inch  
分辨率: 480\*272  
视角: IPS





Industrial/  
Home Appliances



< 车胎检测设备

尺寸:4.3 inch+CTP  
分辨率: 480\*272  
视角: IPS



< 工业仪器

尺寸:8 inch  
分辨率: 800\*600  
视角: TN



< 手持检测

尺寸:3.5 inch  
分辨率: 640\*480  
视角: IPS



< 充电桩

尺寸:10.1 inch+CTP  
分辨率: 1280\*800  
视角: IPS





# Key Partners

---



Oversea

**SONY**  
make.believe



**KINPO(Ti,  
CASIO,CBM,  
HP)**

**TeleTec**  
ТЕЛЕКОММУНИКАЦИОННЫЕ ТЕХНОЛОГИИ

**SANYO**



**LUNA**

**Panasonic**  
ideas for life

**OMRON**

**Honeywell**

**DIEHL**  
Metering

**KÖHLER**  
ELEKTRİK SAYAÇLARI

**Celestica**



**Landis  
Gyr+**  
manage energy better

**EDMI**

**SWATCH GROUP**



GV Introduction

Honor

Team

Product

Customer

## Domestic

华立仪表  
HOLLEY METERING

海兴电力科技  
Hexing Electrical Co., Ltd.

YTL

Reallin

炬华科技  
SUNRISE

深圳市航天泰瑞捷电子有限公司  
Shenzhen Techrise Electronics Co., Ltd.

SANKI

Acrel<sup>®</sup>  
安科瑞电气

龙电华鑫

浙江松夏仪表有限公司  
ZHEJIANG SONGXIA ELECTRIC METER CO., LTD.

Cannet<sup>TM</sup> 福建科能集团

西力  
XILI

INNOVER 先锋电子

正星  
Censtar

HND  
ELE ENERGY METER

威星智能  
VIEWSHINE

TOKHEIM 托肯恒山  
TOKHEIM HENGSHAN

Techen  
乾程





GV Introduction

Honor

Team

Product

Customer

Others





The future

# FUTURE

Anhui GV is committed to becoming a first-class supplier of small and medium-sized LCD products in China, and continues to actively develop products such as high-channel COG, segmented COG, TFT vehicle-mounted instrument module based on existing products to meet market and customer needs. At the same time, in order to meet customers' requirements for high efficiency and low cost, the company has invested a lot of money in equipment automation.

With the improvement of equipment productivity and the continuous completion of automation





GV introduction

Honor

Team

Product

Customer

## Contact us



**WWW.GOLDEN-VISION.CN**



**TEL:0559-2671878 FAX: 0559-2671805**



**Goldenvision industry park Raoshun  
industry area, Xiuning town, Huangshan City, Anhui**





**Thank you**