

# MIXING EQUIPMENT 混合设备

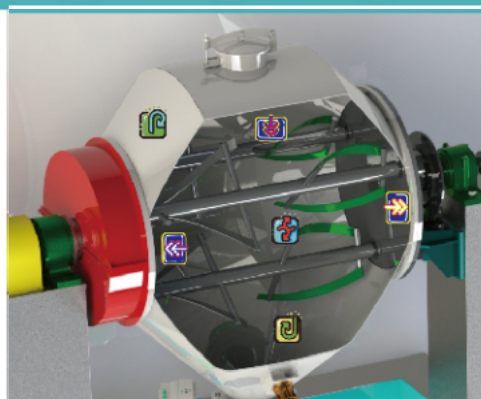


Efficient

Eco-Friendly

Energy Saving

Four-axis Efficient Hybrid Mixer



**Type of materials used:** powder particles + a small amount of additives or liquid, sticky materials, high-moisture materials, easy-to-bond materials, etc.

**Single unit loading volume range/loading volume per batch:** 50L~2500L (Customized services are provided for larger loads)

**Equipment material selection:** stainless steel 304, 316L, manganese steel, titanium steel, duplex steel, etc.

**Usage conditions:** heating mixing, liquid mixing, vacuum mixing

**Explosion-proof requirements:** gas explosion-proof, dust explosion-proof, protection level

**Discharge requirements:** butterfly valve, semi-ball valve, others

Model	Volume (L)	Chargeable volume (L)	Barrel speed (r/min)	Bleed speed (r/min)	Motor power (kw)	Overall rize L*W*H(mm)	Total weight (kg)
RGH-50S	50	38	25	50	1.1	1550 × 700 × 1100	500
RGH-200S	200	150	21	42	2.2	2000 × 850 × 1450	700
RGH-800S	800	600	14	28	5.5	2600 × 1200x1850	2000
RGH-1000S	1000	800	11	22	7.5	2700 × 1250x1850	2500
RGH-1500S	1500	1200	8	16	15	2950 × 1770x2200	2700
RGH-2000S	2000	1600	6	12	18.5	3300 × 1870x2500	3000
RGH-3000S	3000	2400	6	12	22	3900 × 2000x2890	3700

## CASES SCENE

### 现场案例

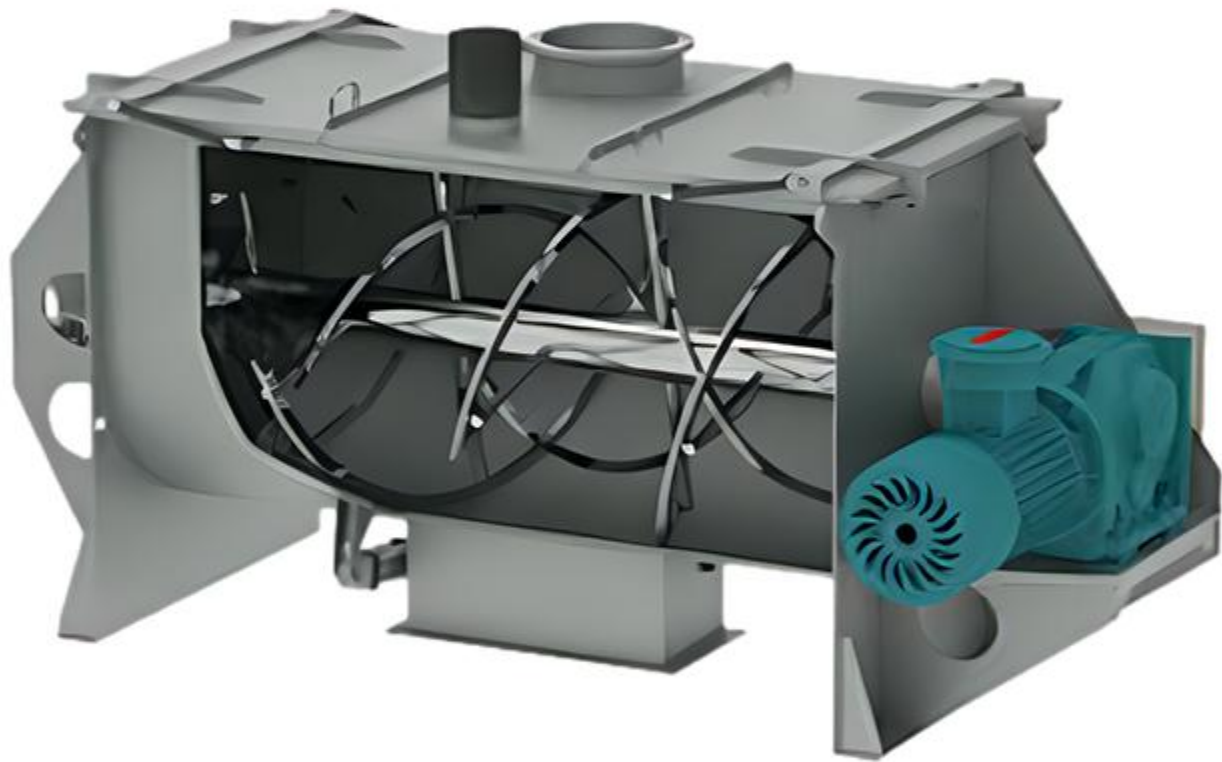




## No.5 Horizontal Ribbon Mixer

The horizontal ribbon mixer primarily consists of a mixing chamber and a mixer drive system. Inside the U-shaped tubular chamber, a double-layer, counter-rotating ribbon agitator shaft is installed. The outer ribbon, driven by the motor, spirals in a direction that pushes the material from both ends of the U-shaped chamber toward the center, while the inner ribbon pushes the material from the center toward the ends, creating a convective mixing action.

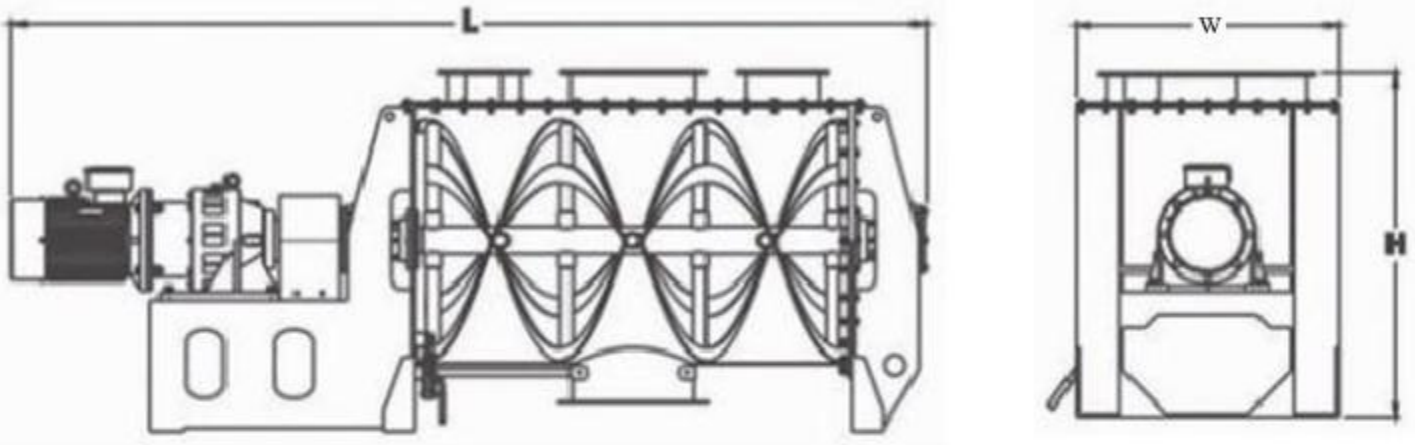
At the center of the bottom of the horizontal mixer drum, there is a discharge port. The outer ribbon's helical structure, working in conjunction with the rotation direction of the main shaft, drives the material along the inner side of the drum wall towards the central discharge port. This design ensures that there are no dead zones inside the drum, allowing for complete and efficient discharge of the material.



### Application

The horizontal ribbon mixer is widely used in industries such as chemicals, pharmaceuticals, food, and building materials. It can be used for mixing powder with powder, adding small amounts of liquid to powder, and mixing powder with granules.

## Technical Parameters



Product Model	RX-LDH-0.3	RX-LDH-0.5	RX-LDH-1	RX-LDH-2	RX-LDH-3	RX-LDH-4	RX-LDH-5	RX-LDH-6	RX-LDH-8	RX-LDH-10	RX-LDH-15	RX-LDH-20	RX-LDH-30
Effective Volume (m <sup>3</sup> )	0.18	0.3	0.6	1.2	1.8	2.4	3	3.6	4.8	6	9	12	18
Maximum Batch Output (kg)	200	300	600	1200	1800	2500	3000	3600	4800	6000	9000	12000	15000
Rotation Speed (r/min)	62	62	49	33	33	27	27	27	22	22	14	14	12
Drive Power (kW)	5.5	7.5	11	15	18.5	22	30	37	45	55	75	90	110
Equipment Weight (kg)	600	900	1200	2000	2500	3500	4000	4500	5000	6000	7500	10500	13000
Length	2280	2670	3140	3860	4460	4950	5280	5530	2100	5610	5820	6300	7000
Width	680	780	980	1200	1300	1400	1550	1560	1720	1750	2000	2350	2600
Height	880	1240	1400	1650	1700	2000	2100	2200	2500	2650	2900	3160	3350





## No.6 Double Conic Mixer

The double-cone mixer ensures uniform mixing of materials, reduces mixing time, lowers energy consumption, guarantees product quality, and improves production efficiency. It brings both social and economic benefits, making it an ideal equipment for solid powder mixing processes.

### Principle and Features

This machine features a double-cone structure in the mixing drum, where materials tumble back and forth within the drum. After a few minutes of forward rotation, the drum can reverse, accelerating the diffusion, flow, and shearing of the materials. This process prevents material accumulation during mixing and avoids segregation by weight, ensuring that materials of different densities and particle sizes are uniformly mixed quickly.



### Technical Parameters

MODEL	Mixing Drum Volume	Loading Coefficient	Motor Power	Overall Dimensions	Installed weight
	m³	(1/2)	(kW)	(L × W × H) mm	Kg
RX-0.1	0.1	0.5	1.1	1580x650x1350	550
RX-0.2	0.2	0.5	1.5	1800x750x1650	680
RX-0.3	0.3	0.5	2.2	2050x850x1850	800
RX-0.4	0.4	0.5	3	2300x950x1850	1000
RX-0.5	0.5	0.5	3	2400x1050x2100	1200
RX-0.8	0.8	0.5	4	2500x1200x2300	1400
RX-1	1	0.5	4	2800x1500x2500	1800
RX-2	2	0.5	5.5	3400x1600x2700	2100
RX-3	3	0.5	7.5	3500x1680x2900	2400
RX-4	4	0.5	7.5	3600x1800x3100	2600
RX-5	5	0.5	11	3900x1900x3300	2800
RX-6	6	0.5	11	4100x2000x3500	3000
RX-8	8	0.5	15	4300x2200x3700	4000

## Application

It is suitable for industries such as powder metallurgy, electrical alloys, magnetic materials, battery powders, pearlescent pigments, chemicals, medical, and food.

