



**PRODUCT  
RANGE**

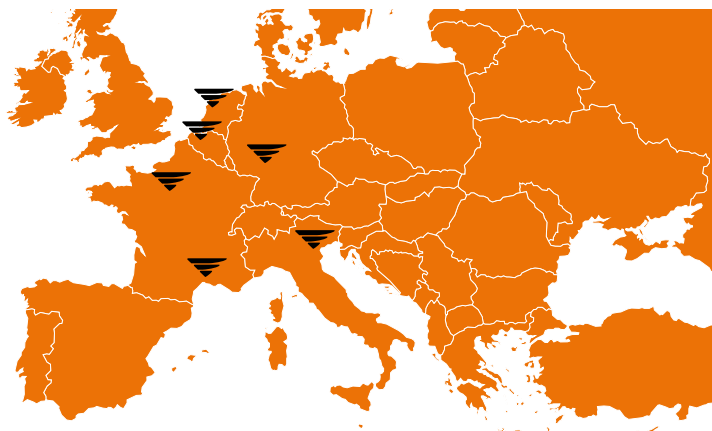
  
**cardin**<sup>®</sup>  
RIELLO ELETTRONICA GROUP

# INDEX

- 2** Company
- 4** Radio systems
- 5** Infrared barriers
- 6** Warning lights
- 7** Access control and command devices
- 8** Electronic programmers
- 9** Automation for sliding gates
- 10** Automation for swing gates
- 11** Underground or integrated automation systems for swing gates
- 12** Automation for large and small garage doors
- 13** Automation for road barriers and parking place protection
- 14** Various accessories and devices to complement automation systems
- 15** OEM solutions and customised projects

# THE COMPANY

THE HISTORY OF CARDIN ELETTRONICA  
AND ITS INCLUSION IN THE  
RIELLO ELETTRONICA GROUP



**Cardin Elettronica is a company that defines itself as a point of reference in the production of radio control systems and ECUs, automated actuators for gates, residential and industrial garage doors of various sizes and access control systems.**

It was **founded in 1974** and immediately contributed to the early development of **radio frequency** technology for radio remote controls and of the automated production of circuit boards. Over the years it has also integrated production capabilities in the **mechanical sector** to provide complete automated access solutions.

In **over 50 years** of history it has maintained its usual spirit and vision: innovation, extreme dynamism and the pursuit of excellence. A team of competent people, experience and an avant-garde vision are the driving force behind Cardin's innovation. A company where trust between collaborators and between company and customers is the key to success.

The consolidation of these values allows Cardin to create reliable, safe and high-performance products. Unique products, with a soul that makes them user-friendly objects, which have found their way into the homes and pockets of millions of people around the world.

Today the company has its headquarters in the **province of Treviso**, in Codognè, has **6 branches throughout Europe** and **distributes** its products **in over 60 countries** around the world. In **2011** it became **part of the Riello Elettronica Group** with the aim of broadening its vision and strengthening its ideas, gaining more opportunities for interaction and greater stimulus for research.

# RADIO SYSTEMS



Radio controls for gates, access systems, awnings and alarms, used worldwide and renowned for their reliability, safety and performance. Transmitters, receivers, transceivers and industrial solutions for any application requirement.

## HERE ARE SOME OF OUR SERIES\*:



### S449-S486 Series

- Frequency 433 MHz – 868 MHz
- Rolling Code
- Iconic and ergonomic design



### S504-S508 Series

- Frequency 433 MHz – 868 MHz
- 128 bit Rolling Code
- Integrated RFID tag
- Remote TX enabling



### UNICO500MF

- 100 channels
- Colour display
- Multi-frequency and multi-decoding
- Range up to 150 m
- Ability to set up scenarios and events

\* for the complete range of products, visit our website [www.cardin.it](http://www.cardin.it)

# INFRARED BARRIERS



A wide range of photoelectric cells that can be adapted to any type of installation: superior performance and extreme reliability for a variety of solutions that guarantee **maximum safety** in both **residential** and **industrial** settings.

## HERE ARE SOME OF OUR SERIES\*:



### CDR842A-852A

- Painted aluminium cover
- 180° / 60° adjustable optics
- IP66 level of protection
- IR range up to 15 m / 60 m



### CDR999

- Compact dimensions
- 3 synchronisable pairs
- 180° / 60° adjustable optics
- Class 3



### VEDO180PRO

- IR range up to 25 m
- Dedicated column
- 8 synchronisable pairs
- 180° adjustable optics

\* for the complete range of products, visit our website [www.cardin.it](http://www.cardin.it)

# WARNING LIGHTS



LED warning systems that are effective in any situation and stand out even when switched off. Available in monochrome or **RGB** and in **24 V** or **230 V**.

## HERE ARE SOME OF OUR SERIES\*:



### ICON

- Iconic design
- 24 V and 230 V power supply
- Light available in orange or white
- Integrated 433 MHz aerial



### ICONX

- Multi-LED RGB
- 24 V power supply
- 5 different coloured lights depending on function
- Integrated audible warning device
- Integrated 433 MHz aerial



### MOLLIGHT

- 24 V and 230 V versions available
- Optional dedicated aerial

\* for the complete range of products, visit our website [www.cardin.it](http://www.cardin.it)

# ACCESS CONTROL AND COMMAND DEVICES



**4G** access control systems suitable for the management of **multi-user buildings**, **apartment blocks**, **commercial activities** and for **businesses** that require programmed access management. Devices to control and command automated access with secret code or transponder protection.

## HERE ARE SOME OF OUR SERIES\*:



### CARHF Series

- 4G technology
- Up to 1000 users
- Compatible with the Cardin series of radio remote controls, keypads and transponder readers



### Keypads and RFID readers

- There are several types of RFID readers, keypads or a combination of the two to choose from
- Digital transmission via cable
- IP57 surface installation
- Number of user codes that can be stored 1000

\* for the complete range of products, visit our website [www.cardin.it](http://www.cardin.it)



# ELECTRONIC PROGRAMMERS



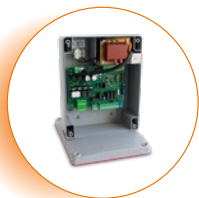
A wide range of programmers for the operation and control of automated systems with **1 or 2 24 V, 230 V and 400 V** motors. All models are equipped with automatic detection of travel limits and any obstacles by means of an **encoder sensor** and/or magnetic travel limits, current control, **motor deceleration before the reaching the travel limits**, motor **power control** and input status **diagnostics**. A Bluetooth module can be inserted for command, operation and management via **dedicated Apps**. Connection with 4G/Wi-Fi interface for remote management is possible.

## HERE ARE SOME OF OUR SERIES\*:



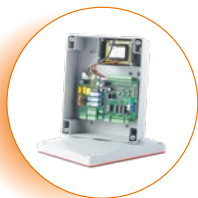
### CC242ETOP

- For 1 – 2 24 V motors
- LCD Display
- Movement path self-learning
- Integrated radio receiver



### T600/T624

- Universal ECU for 1 – 2 24 V motors (T624)
- Universal ECU for 1 – 2 230 V motors (T600)
- Movement path self-learning

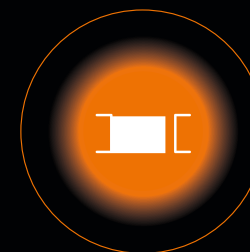


### T400

- Universal ECU for 1 230 V or 400 V motor
- Movement path self-learning

\* for the complete range of products, visit our website [www.cardin.it](http://www.cardin.it)

# AUTOMATION FOR SLIDING GATES



A complete range of automated systems for the movement of sliding gates. Models for doors **from 300 kg up to 3000 kg**. **Compact and high-performance**, with complete standard equipment, they are reliable and resistant to atmospheric agents.

## HERE ARE SOME OF OUR SERIES\*:



### SLEVO Series

- 230 V motor
- Models for doors from up to 600 kg to up to 1200 kg
- 800 kg and 1200 kg oil lubricated models
- Movement control with encoder and magnetic travel limits



### SLX Series

- 24 V motor
- Models for doors up to 800 kg, 1000 kg, 1200 kg, 1500 kg, 2000 kg, 3000 kg
- 1200 kg reversible model with electric lock
- Advanced electronics with LCD display
- Movement control with double encoder
- Hi-Speed DRACO models (up to 30 m/min)



### SLi Series

- Models that can be integrated into the door or gate structure
- 24 V motor
- Movement control with double encoder
- Models for doors up to 300 kg, 700 kg, 1000 kg, 2000 kg
- Hi-Speed DRACO models (up to 30 m/min)

\* for the complete range of products, visit our website [www.cardin.it](http://www.cardin.it)

# AUTOMATION FOR SWING GATES



Multiple series of automated systems are available for the movement of gates with door leaves of different types and sizes. Those with **hinged operator arm** are ideal for structures with offset hinges, while those with **worm screw** based automation are simple to install and also suitable for very small columns.

## HERE ARE SOME OF OUR SERIES\*:



### BLADE-BLEGOS-ESOL Series

- Worm screw automations
- For door leaves up to 3 m and 5 m
- 24 V and 230 V models, also reversible (BLADE)
- 24 V models, also suitable for intensive use (BLEGOS-ESOL)
- Encoder controlled and travel limits on the screw



### BL3924 Series

- Automations with hinged operator arm, straight or with joints (curved)
- Suitable for intensive use
- Advanced ECU with LCD graphic display
- Movement control with double encoder
- For gate leaves up to 400 kg / 5 m

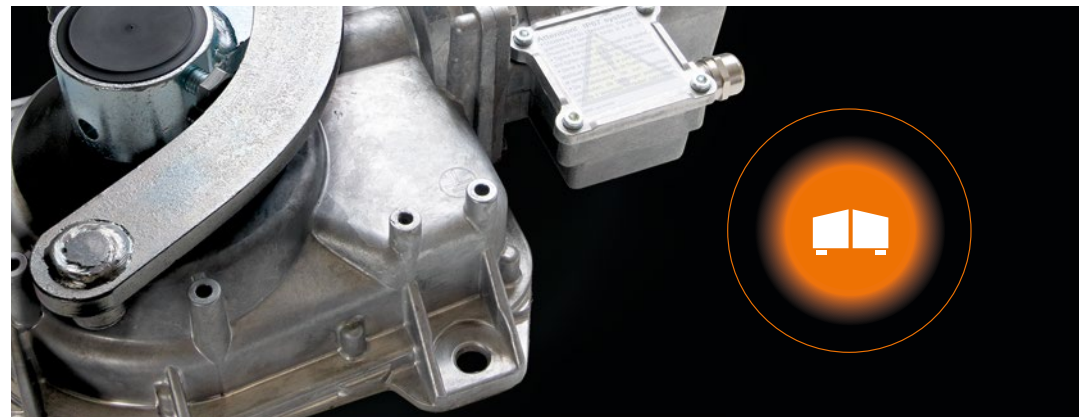


### BLGRIFFE Series

- Hinged or straight operator arm automation
- Movement control with encoder
- For leaves up to 200 kg / 2.5 m
- Also suitable for small columns

\* for the complete range of products, visit our website [www.cardin.it](http://www.cardin.it)

# UNDERGROUND OR INTEGRATED AUTOMATION SYSTEMS FOR SWING GATES



A series of underground automations for swing gates, 24 V or 230 V, which, once installed, are not visible and guarantee extreme reliability. Also, a swing gate automation series that can be integrated into the gate structure.

## HERE ARE SOME OF OUR SERIES\*:



### HLXCORE Series

- Underground automation for swing gates
- 24 V or 230 V
- Encoder control
- Robustness at the highest levels
- High compatibility with previous embedding cases

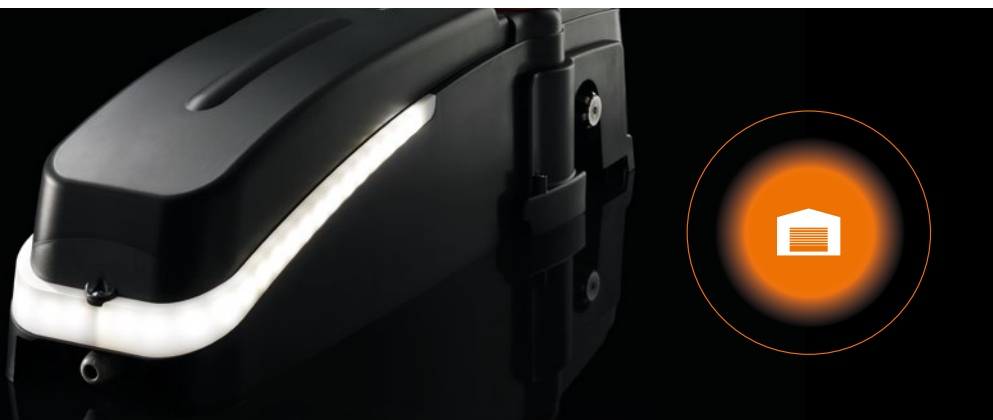


### BLi Series

- Inside automation for swing gates
- For gate leaves up to 200 kg / 2.5 m
- Double encoder control

\* for the complete range of products, visit our website [www.cardin.it](http://www.cardin.it)

# AUTOMATION FOR LARGE AND SMALL GARAGE DOORS



Series of automated systems for counterbalanced overhead or sectional garage doors. They preserve the aesthetics of the door and accompany it throughout its movement, **enhancing its performance.**

## HERE ARE SOME OF OUR SERIES\*:



### GLMECHA Series

- Automated systems for counterbalanced overhead doors up to 11 m<sup>2</sup>
- 24 V or 230 V
- Intensive use (24 V)
- Advanced electronics with display and encoder control



### GL124 Series

- Chain guided automation system for sectional doors up to 25 m<sup>2</sup>
- 24 V
- Aluminium guides up to 6 m
- Intensive use
- Advanced electronics with display and encoder control



### GLZEN Series

- Chain guided automation system for sectional doors up to 12 m<sup>2</sup>
- 24 V
- Encoder controlled

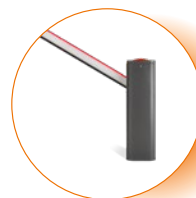
\* for the complete range of products, visit our website [www.cardin.it](http://www.cardin.it)

# AUTOMATION FOR ROAD BARRIERS AND PARKING PLACE PROTECTION



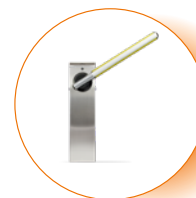
Complete automation solutions for road barriers with a **refined design**; they are **efficient, precise** and with a fluid and impeccable movement. Self-powered, elegant and parking place protection, with different features depending on the model.

## HERE ARE SOME OF OUR SERIES\*:



### ELDOM Series

- 24 V Road Barriers
- Models for booms from 3 m to 8 m
- Advanced electronics with graphic display
- Extreme reliability and robustness



### ELSNAP Series

- 24 V Road Barriers
- Models for booms from 3 m to 6 m
- Optional photovoltaic panel power supply
- Stainless steel design



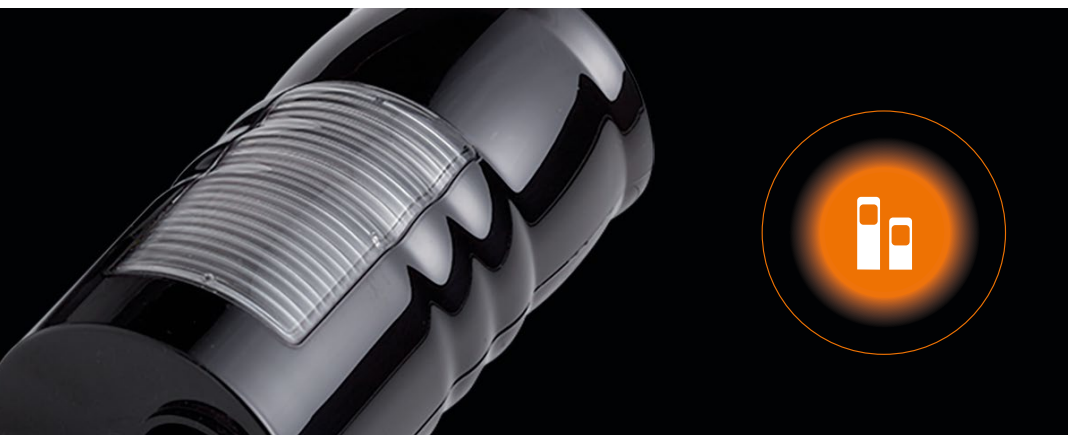
### PARKLINE/PARKSUN Series

- Elegant and robust stainless-steel structure
- Models with vehicle sensor
- Models with Bluetooth connection, dedicated Apps and software, designed for car park management.

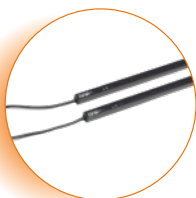
\* for the complete range of products, visit our website [www.cardin.it](http://www.cardin.it)



## VARIOUS ACCESSORIES AND DEVICES TO COMPLEMENT AUTOMATION SYSTEMS



### HERE ARE SOME OF OUR SERIES\*:



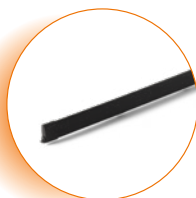
#### CDR RED

series of multichannel infrared barriers for sectional doors and high-speed curtains, capable of monitoring passageways at different heights.



#### Radioshield

wireless systems for safety edges and photoelectric cells that transmit the signal via radio.



#### Safety columns and edges

a complete line of columns for photoelectric cells and safety edges for gates and overhead doors, of various types and sizes.

\* for the complete range of products, visit our website [www.cardin.it](http://www.cardin.it)

## OEM SOLUTIONS AND CUSTOMISED PROJECTS

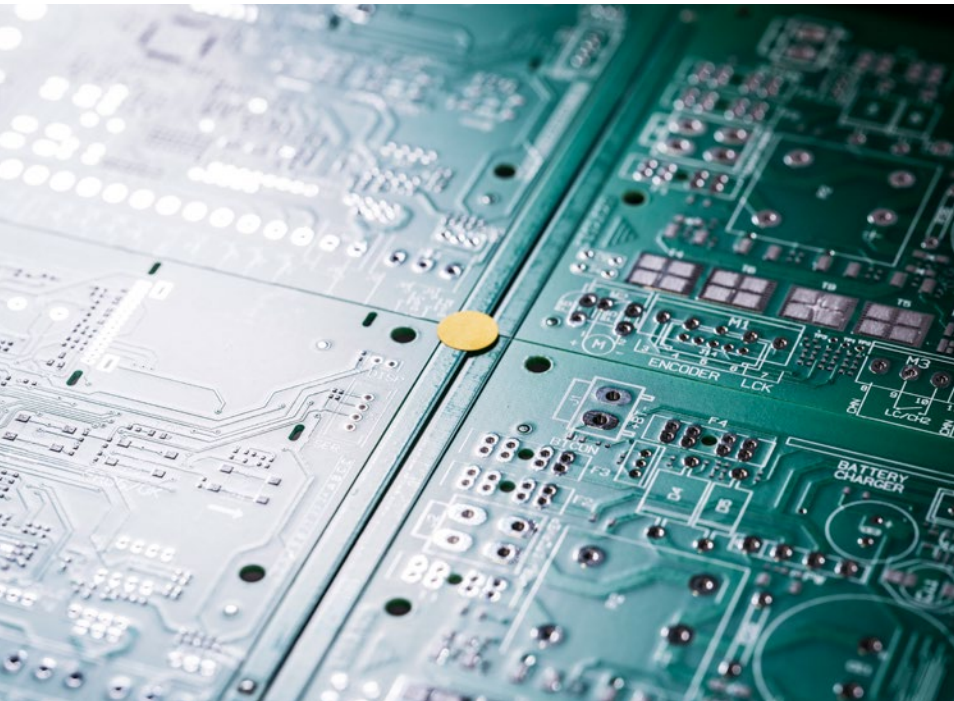
For Cardin, the desire to respond to a **wide range of needs** also means offering **customised solutions** designed to meet specific requirements.

**Each project is unique and aims to achieve total customer satisfaction.**

In addition to manufacturing automated gates, access and cover systems, Cardin develops customised projects for the **construction, naval, elevator and escalator sectors**, as well as any other field in which electronic components, ECUs, radio remote controls and automated systems for the movement of objects and structures may be of use.



Download the  
**ULTIMATE CARDIN** App





## **CARDIN ELETTRONICA S.P.A.**

Via del Lavoro, 73 - Z.I. Cimavilla  
31013 Codognè (TV) - Italia  
+39 0438.40.40.11  
Italia: [sales.office.it@cardin.it](mailto:sales.office.it@cardin.it)  
Europe: [sales.office@cardin.it](mailto:sales.office@cardin.it)  
**cardin.it**