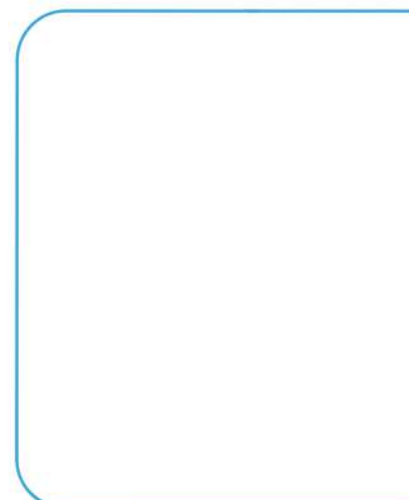
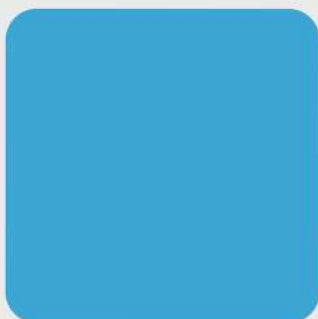
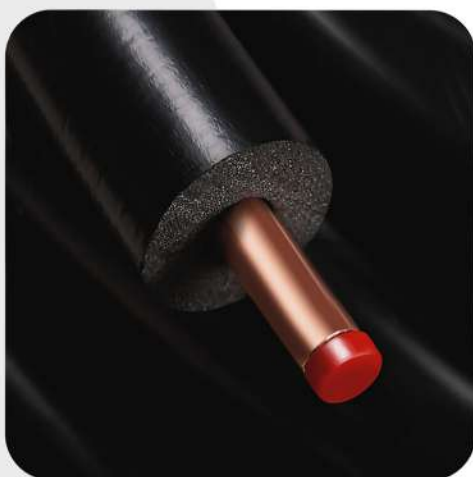


PRE-INSULATED COPPER TUBES



BRISCOOL WHITE PRE-INSULATED COPPER TUBES

Briscool Pre-Insulated Copper Tubes are advanced technological products of high added value and significantly superior in effectiveness compared to conventional insulation methods. Suitable for air conditioning, VRF systems, Split units, refrigeration and industrial systems. Cu-Dhp 99,9% copper pipe insulated with an expanded polyethylene tube, closed cell and an external LDPE foil. Maximum Fire Safety with self-extinguishing DIN 4102-B1, SBI BL S1D0. Nontoxic gases and resistant to external chemical agents and ultra-violet rays. The unique advantages offered by the Briscool Pre-Insulated Copper Tubes, such as copper resistance and durability, coupled with high performance pre-insulation, result in significant energy savings. Briscool Pre-Insulated copper tubes are ideal choice for every modern application with a competitive market price and low installation cost.



Technical Specs of Copper Tubes

Chemical Composition

%99,9 Cu-Dhp

Conformity

EN-12735-1, ASTM B280

Specific Heat (at 20°C)

0,0921cal/g°C

Stretch Modulus(at 20°C annealed)

12000kg/mm²

Thermal Conductivity(at 20°C)

0.70-0,87 cal/cm²

Elongation A%

A% min=45%

Internal Surface

Glossy, perfectly clean conforming
ASTM B-280 and EN12735-1 legislation

Technical Specs of PE Insulation

Material

PE (Polyethylene) Foam

Sustainability

Fully recyclable

Specificities

Unique aesthetical appearance
Excellent mechanical strength

Density According to DIN 53420 ASTM D 1667

30-33 KG/m³

Reaction to Fire

EN 13501-1 Class B or Class E

Service Temperatures

Minimum - 80°C
Maximum 95°C

Thickness Range of Insulation

6-9-13-19

Values are listed, as obtained under standard laboratory conditions and may be amended, without prior notice.

Standart Dimensions according to EN 12735-1

Copper Tube External Diameter	Inch	1/4	3/8	1/2	5/8	3/4	7/8
	mm	6.35	9.52	12.70	15.87	19.05	22.22
Copper Tube Wall Thickness	mm	0.80	0.80	0.80	1.00	1.00	1.10
Insulation Thickness	mm	6-9-13-19	6-9-13-19	6-9-13-19	6-9-13-19	6-9-13-19	6-9-13-19
Operation Allowable Pressure	bar	158	98	72	67	59	45
Coil Length	meter	15/50	15/50	15/50	15/50	15/50	15/50



BRISCOOL DOUBLE WHITE PRE-INSULATED COPPER TUBES

Briscool Pre-Insulated Copper Tubes are advanced technological products of high added value and significantly superior in effectiveness compared to conventional insulation methods. Suitable for air conditioning, VRF systems, Split units, refrigeration and industrial systems. Cu-Dhp 99,9% copper pipe insulated with an expanded polyethylene tube, closed cell and an external LDPE foil. Maximum Fire Safety with self-extinguishing DIN 4102-B1, SBI BL S1D0. Nontoxic gases and resistant to external chemical agents and ultra-violet rays. The unique advantages offered by the Briscool Pre-Insulated Copper Tubes, such as copper resistance and durability, coupled with high performance pre-insulation, result in significant energy savings. Briscool Pre-Insulated copper tubes are ideal choice for every modern application with a competitive market price and low installation cost.



Technical Specs of Copper Tubes

Chemical Composition

%99,9 Cu-Dhp

Conformity

EN-12735-1, ASTM B280

Specific Heat (at 20°C)

0,0921cal/g°C

Stretch Modulus(at 20°C annealed)

12000kg/mm²

Thermal Conductivity(at 20°C)

0.70-0,87 cal/cm²

Elongation A%

A% min=45%

Internal Surface

Glossy, perfectly clean conforming
ASTM B-280 and EN12735-1 legislation

Technical Specs of PE Insulation

Material

PE (Polyethylene) Foam

Sustainability

Fully recyclable

Specificities

Unique aesthetical appearance
Excellent mechanical strength

Density According to DIN 53420 ASTM D 1667

30-33 KG/m³

Reaction to Fire

EN 13501-1 Class B or Class E

Service Temperatures

Minimum - 80°C
Maximum 95°C

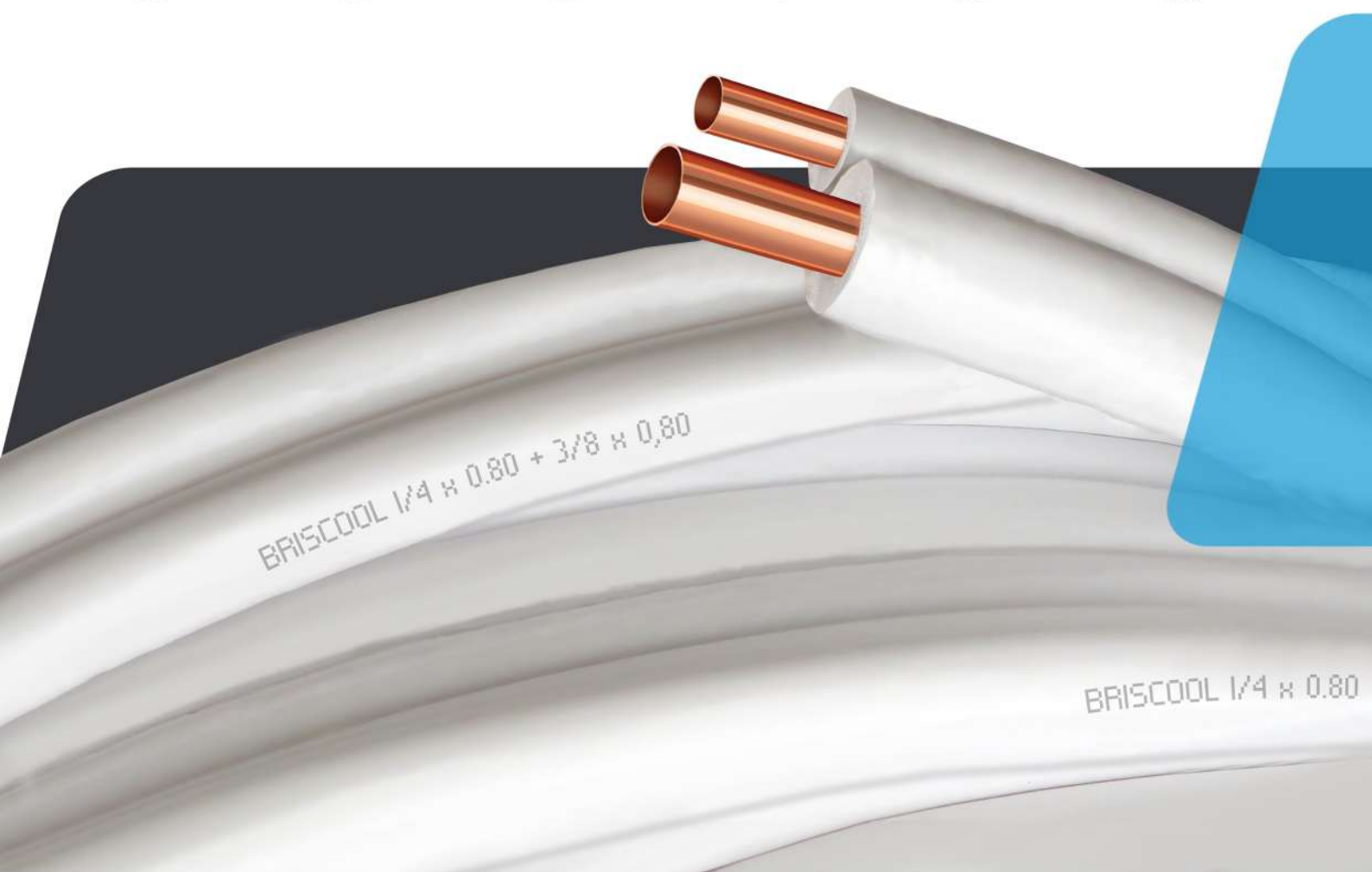
Thickness Range of Insulation

6-9-13-19

Values are listed, as obtained under standard laboratory conditions and may be amended, without prior notice.

Standart Dimensions according to EN 12735-1

Copper Tube External Diameter	Inch	1/4-3/8	1/4-1/2	1/4-5/8	3/8-5/8	3/8-3/4	1/2-3/4
	mm	6,35-9,52	6,35-12,70	6,35-15,87	9,52-15,87	9,52-19,05	12,70-19,05
Copper Tube Wall Thickness	mm	0,80-0,80	0,80-0,80	0,80-1,00	0,80-1,00	0,80-1,00	0,80-1,00
Insulation Thickness	mm	6-9-13-19	6-9-13-19	6-9-13-19	6-9-13-19	6-9-13-19	6-9-13-19
Operation Allowable Pressure	bar	158-98	158-72	158-67	98-67	98-59	72-59
Coil Length	meter	15/50	15/50	15/50	15/50	15/50	15/50



BRISCOOL BLACK PRE-INSULATED COPPER TUBES

Briscool Pre-Insulated Copper Tubes are advanced technological products of high added value and significantly superior in effectiveness compared to conventional insulation methods. Suitable for air conditioning, VRF systems, Split units, refrigeration and industrial systems. Cu-Dhp 99,9% copper pipe insulated with an expanded polyethylene tube, closed cell and an external LDPE foil. Maximum Fire Safety with self-extinguishing DIN 4102-B1, SBI BL S1D0. Nontoxic gases and resistant to external chemical agents and ultra-violet rays. The unique advantages offered by the Briscool Pre-Insulated Copper Tubes, such as copper resistance and durability, coupled with high performance pre-insulation, result in significant energy savings. Briscool Pre-Insulated copper tubes are ideal choice for every modern application with a competitive market price and low installation cost.



Technical Specs of Copper Tubes

Chemical Composition

%99,9 Cu-Dhp

Conformity

EN-12735-1 , ASTM B280

Specific Heat (at 20°C)

0,0921cal/g°C

Stretch Modulus(at 20°C annealed)

12000kg/mm²

Thermal Conductivity(at 20°C)

0.70-0,87 cal/cm²

Elongation A%

A% min=45%

Internal Surface

Glossy, perfectly clean conforming
ASTM B-280 and EN12735-1 legislation

Technical Specs of PE Insulation

Material

PE (Polyethylene) Foam

Sustainability

Fully recyclable

Specificities

Unique aesthetical appearance
Excellent mechanical strength

Density According to DIN 53420 ASTM D 1667

30-33 KG/m³

Reaction to Fire

EN 13501-1 Class B or Class E

Service Temperatures

Minimum - 80°C
Maximum 95°C

Thickness Range of Insulation

6-9-13-19

Values are listed, as obtained under standard laboratory conditions and may be amended, without prior notice.

Standart Dimensions according to EN 12735-1

Copper Tube External Diameter	Inch	1/4	3/8	1/2	5/8	3/4	7/8
	mm	6.35	9.52	12.70	15.87	19.05	22.22
Copper Tube Wall Thickness	mm	0.80	0.80	0.80	1.00	1.00	1.10
Insulation Thickness	mm	6-9-13-19	6-9-13-19	6-9-13-19	6-9-13-19	6-9-13-19	6-9-13-19
Operation Allowable Pressure	bar	158	98	72	67	59	45
Coil Length	meter	15/50	15/50	15/50	15/50	15/50	15/50



BRISCOOL DOUBLE BLACK PRE-INSULATED COPPER TUBES

Briscool Pre-Insulated Copper Tubes are advanced technological products of high added value and significantly superior in effectiveness compared to conventional insulation methods. Suitable for air conditioning, VRF systems, Split units, refrigeration and industrial systems. Cu-Dhp 99,9% copper pipe insulated with an expanded polyethylene tube, closed cell and an external LDPE foil. Maximum Fire Safety with self-extinguishing DIN 4102-B1, SBI BL S1D0. Nontoxic gases and resistant to external chemical agents and ultra-violet rays. The unique advantages offered by the Briscool Pre-Insulated Copper Tubes, such as copper resistance and durability, coupled with high performance pre-insulation, result in significant energy savings. Briscool Pre-Insulated copper tubes are ideal choice for every modern application with a competitive market price and low installation cost.



Technical Specs of Copper Tubes

Chemical Composition

%99,9 Cu-Dhp

Conformity

EN-12735-1 , ASTM B280

Specific Heat (at 20°C)

0,0921cal/g°C

Stretch Modulus(at 20°C annealed)

12000kg/mm²

Thermal Conductivity(at 20°C)

0.70-0,87 cal/cm²

Elongation A%

A% min=45%

Internal Surface

Glossy, perfectly clean conforming
ASTM B-280 and EN12735-1 legislation

Technical Specs of PE Insulation

Material

PE (Polyethylene) Foam

Sustainability

Fully recyclable

Specificities

Unique aesthetical appearance
Excellent mechanical strength

Density According to DIN 53420 ASTM D 1667

30-33 KG/m³

Reaction to Fire

EN 13501-1 Class B or Class E

Service Temperatures

Minimum - 80°C
Maximum 95°C

Thickness Range of Insulation

6-9-13-19

Values are listed, as obtained under standart laboraty conditions and may be amended, without prior notice.

Standart Dimensions according to EN 12735-1

Copper Tube External Diameter	Inch	1/4-3/8	1/4-1/2	1/4-5/8	3/8-5/8	3/8-3/4	1/2-3/4
	mm	6,35-9,52	6,35-12,70	6,35-15,87	9,52-15,87	9,52-19,05	12,70-19,05
Copper Tube Wall Thickness	mm	0,80-0,80	0,80-0,80	0,80-1,00	0,80-1,00	0,80-1,00	0,80-1,00
Insulation Thickness	mm	6-9-13-19	6-9-13-19	6-9-13-19	6-9-13-19	6-9-13-19	6-9-13-19
Operation Allowable Pressure	bar	158-98	158-72	158-67	98-67	98-59	72-59
Coil Length	meter	15/50	15/50	15/50	15/50	15/50	15/50



BRISCOOL ANTI-UV FIREPROOF PE INSULATION

Briscool Pre-Insulated Copper Tubes are advanced technological products of high added value and significantly superior in effectiveness compared to conventional insulation methods. Suitable for air conditioning, VRF systems, Split units, refrigeration and industrial systems. Cu-Dhp 99,9% copper pipe insulated with an expanded polyethylene tube, closed cell and an external LDPE foil. Closed cell structure for thermal insulation. Maximum Fire Safety with self-extinguishing DIN 4102-B1, SBI BL S1D0. Nontoxic gases and resistant to external chemical agents and ultra-violet rays. Doesn't contain harmful materials to human health. Free of harmful chemicals and HCFC. Not affected by chemicals and environmental conditions. Water and moisture proof. With its flexible structure, it doesn't crush or collapse after impact. The unique advantages offered by the Briscool Pre-Insulated Copper Tubes, such as copper resistance and durability, coupled with high performance pre-insulation, result in significant energy savings. Briscool Pre-Insulated copper tubes are ideal choice for every modern application with a competitive market price and low installation cost.



Technical Specs of Copper Tubes

Chemical Composition

%99,9 Cu-Dhp

Conformity

EN-12735-1, ASTM B280

Specific Heat (at 20°C)

0,0921cal/g°C

Stretch Modulus(at 20°C annealed)

12000kg/mm²

Thermal Conductivity(at 20°C)

0.70-0,87 cal/cm²

Elongation A%

A% min=45%

Internal Surface

Glossy, perfectly clean conforming
ASTM B-280 and EN12735-1 legislation

Technical Specs of PE Insulation

Dimensional Stabilities According to ISO 2796 for Temperatures up to 100°C
< 5%

Thermal Conductivity Coefficient According to EN ISO 8497
0.0357 W/mK (0°C) - 0.0389 W/mK (40°C)

Working Temperature According to Laboratory Tests
-80°C to +110°C

The Reaction of the Insulation to Fire
EN 13501-1 Class B DIN 4102

Density According to DIN 53420
30 - 33 kg/m³

Resistance to Chemical Agents According to ASTM 543-56 T
Very Good

Vapour water diffusion resistance coefficient according to EN 13469
12,500

Values are listed, as obtained under standart laboraty conditions and may be amended, without prior notice.

Standart Dimensions according to EN 12735-1

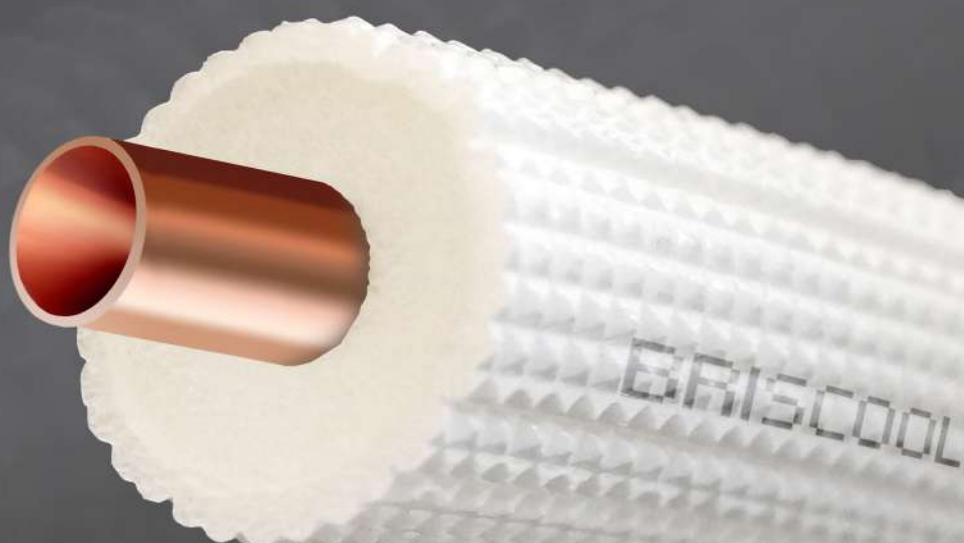
Copper Tube External Diameter	Inch	1/4	3/8	1/2	5/8	3/4	7/8
	mm	6.35	9.52	12.70	15.87	19.05	22.22
Copper Tube Wall Thickness	mm	0.80	0.80	0.80	1.00	1.00	1.10
Insulation Thickness	mm	6-9-13-19	6-9-13-19	6-9-13-19	6-9-13-19	6-9-13-19	6-9-13-19
Operation Allowable Pressure	bar	158	98	72	67	59	45
Coil Length	meter	15/50	15/50	15/50	15/50	15/50	15/50



Cross-Linked
Polyethylene



RESISTANCE



BRISCOOL RUBBER PRE-INSULATED COPPER TUBES

Briscool Rubber Insulated Copper Pipes are advanced technological products with high added value and significantly superior in effectiveness compared to traditional insulation methods. It is suitable for air conditioners, VRF systems, Split units. It provides maximum savings with its low thermal conductivity coefficient (0.034W/mK). Maximum Fire Safety with EN 13501-1 B-s2 d0. Does not release toxic gases and fumes during fire. Rubber Insulated Copper Pipe is also suitable for food industry, subway and submarines. It is environmentally friendly, does not contain HCFC-GFC. The unique advantages of Briscool Rubber Insulated Copper Tubes, such as copper resistance and durability, combined with high performance pre-insulation provide significant energy savings. Briscool Rubber Insulated Copper Tubing is the ideal choice for any modern application with a competitive market price and low installation cost.



Technical Specs of Copper Tubes

Chemical Composition

%99,9 Cu-Dhp

Conformity

EN-12735-1 , ASTM B280

Specific Heat (at 20°C)

0,0921cal/g°C

Stretch Modulus(at 20°C annealed)

12000kg/mm²

Thermal Conductivity(at 20°C)

0.70-0,87 cal/cm²

Elongation A%

A% min=45%

Internal Surface

Glossy, perfectly clean conforming
ASTM B-280 and EN12735-1
legislation

Technical Specs of Rubber Insulation

Material

Elastomeric rubber foam

Types of Facing

Without Facing

μ (Water Vapor Diffusion Resistance Factor)

7000

λ (Thermal Conductivity) W/ (m.K)

0.0034(0°C)

0.0039(25°C)

0.0041(75°C)

Fire Response Classification (EN 13501-1)

BL-s2,d0

Service Temperature °C (EN14707)

-50/116°C

Values are listed, as obtained under standart laboraty conditions and may be amended, without prior notice.

Standart Dimensions according to EN 12735-1

Copper Tube External Diameter	Inch	1/4	3/8	1/2	5/8	3/4	7/8
	mm	6.35	9.52	12.70	15.87	19.05	22.22
Copper Tube Wall Thickness	mm	0.80	0.80	0.80	1.00	1.00	1.10
Insulation Thickness	mm	6-9-13-19	6-9-13-19	6-9-13-19	6-9-13-19	6-9-13-19	6-9-13-19
Operation Allowable Pressure	bar	158	98	72	67	59	45
Coil Length	meter	15/50	15/50	15/50	15/50	15/50	15/50



BRISCOOL PRE-INSULATED COPPER TUBES PRODUCT CATEGORIES

Briscool Pre-Insulated Copper Tubes are advanced technological products of high added value and significantly superior in effectiveness compared to conventional insulation methods. Suitable for air conditioning, VRF systems, Split units, refrigeration and industrial systems. Cu-Dhp 99,9% copper pipe insulated with an expanded polyethylene tube, closed cell and an external LDPE foil. Maximum Fire Safety with self-extinguishing DIN 4102-B1, SBI BL S1D0. Nontoxic gases and resistant to external chemical agents and ultra-violet rays. The unique advantages offered by the Briscool Pre-Insulated Copper Tubes, such as copper resistance and durability, coupled with high performance pre-insulation, result in significant energy savings. Briscool Pre-Insulated copper tubes are ideal choice for every modern application with a competitive market price and low installation cost.



Technical Specs of Copper Tubes

Chemical Composition

%99,9 Cu-Dhp

Conformity

EN-12735-1 , ASTM B280

Specific Heat (at 20°C)

0,0921cal/g°C

Stretch Modulus(at 20°C annealed)

12000kg/mm²

Thermal Conductivity(at 20°C)

0.70-0,87 cal/cm²

Elongation A%

A% min=45%

Internal Surface

Glossy, perfectly clean conforming
ASTM B-280 and EN12735-1 legislation

Technical Specs of PE Insulation

Material

PE (Polyethylene) Foam

Sustainability

Fully recyclable

Specificities

Unique aesthetical appearance
Excellent mechanical strength

Density According to DIN 53420 ASTM D 1667

30-33 KG/m³

Reaction to Fire

EN 13501-1 Class B or Class E

Service Temperatures

Minimum - 80°C
Maximum 95°C

Thickness Range of Insulation

6-9-13-19

Values are listed, as obtained under standard laboratory conditions and may be amended, without prior notice.

Standart Dimensions according to EN 12735-1

The dimensions listed in the table are subject to variation due to the tolerance features of the pipes.

Copper Tube External Diameter	Inch	1/4	3/8	1/2	5/8	3/4	7/8
	mm	6.35	9.52	12.70	15.87	19.05	22.22
BRISCOOL SMART	mm	1.00	1.00	1.00	1.00	1.00	1.12
BRISCOOL MAXI	mm	0.80	0.80	0.80	1.00	1.00	1.12
B-FORM VRV	mm	0.75	0.75	0.75	0.90	0.90	
B-FORM SPLIT	mm	0.70	0.70	0.70	0.80	0.80	

