

**NORDIC  
POCKET SAW™**



NORDIC POCKET SAW  
**WORKBOOK**  
2025/2026

ESTABLISHED IN SWEDEN  
[nordicpocketsaw.com](http://nordicpocketsaw.com)  
[info@nordicpocketsaw.com](mailto:info@nordicpocketsaw.com)



## HOW IT ALL STARTED

Nordic Pocket Saw was founded in 2015 by two childhood friends who saw an opportunity in creating a quality product for their own outdoor adventures and later for thousands of other outdoor enthusiasts.

It all began when one of their friends went on a hunting expedition to the remote regions of the Amazonas. During his trip, he carried a hand-powered chainsaw that he had bought as a souvenir on one of his business trips. He decided to give it to one of the tribe leaders, who appreciated the gesture so much that he said it was one of the most useful gifts he had ever received.

When the two friends learned about the meeting with the tribe leader, they realized the benefits of having a similar saw on their outdoor adventures. Upon searching for the tool in Sweden and Europe, they discovered that it was not available. Eventually, they ended up buying some samples online, which did not perform at all.

The idea to produce a high-quality, hand-powered chainsaw was born, leading to the creation of Nordic Pocket Saw. Today, it is an international brand with distribution in over 25 countries across five continents. Quality has been the guiding principle in product development from the start, as customers need to be able to rely on the tools. Making quality products is also a crucial starting point in our continuous work of being and becoming more sustainable for each year.



## OUR SIGNUM THE HAND-POWERED CHAINSAW

The hand-powered chainsaw was our first product and has become the signature of our brand. It is widely used by outdoor enthusiasts for cutting firewood, clearing trails, and removing fallen trees. Many people even keep one in their car for emergencies when a fallen tree blocks the road.

We're also proud to have supplied saws to Special Forces in Europe, proving that our tools are trusted by the best, where quality is non-negotiable.

The hand-powered chainsaw offers several advantages over traditional foldable saws. It can cut larger logs, with a recommended thickness of 4 to 45 cm. It engages the whole body while sawing, making it more efficient. Additionally, it's compact and easy to store, and it can be re-sharpened multiple times using traditional chainsaw sharpening tools.

### STRENGTH TESTED

Our chainsaws are laboratory strength tested in Sweden. They all withstand a force 20 times greater than human strength.

WORLD'S MOST AWARDED HAND-POWERED CHAINSAW



## AMBASSADOR

Johan Skullman, a military officer and survival expert, has dedicated thirty years to serving in the Swedish Defence as an officer in the intelligence department. He is an expert in outdoor and a military survival instructor with experience from all over the world. Whether it's mountains, water, forest or jungle, regardless of the terrain, he always has some insight or vital knowledge in store to help you survive.

With his extensive experience, he is a valuable partner in our product development process. He thoroughly tests and utilizes our products in their actual environment, providing us with crucial feedback before their launch to the market.



## OUR PRODUCT CATEGORIES

At Nordic Pocket Saw we provide top quality tools for the outdoor, rescue and garden segments. Our range of products includes chainsaws, folding saws, and multi-tools, each with their unique advantages and places of use.



HAND-POWERED  
CHAINSAWS



MULTI-TOOLS



FOLDABLE SAWS



**NORDIC  
POCKET SAW™**



## NORDIC POCKET SAW

# ARNVIK

The Nordic Pocket Saw Arnvik was originally developed for military and security forces, which is reflected in its darker colors and the absence of shiny parts. It is designed to withstand all weather conditions, from extreme cold to heat, and to perform reliably in any situation. This is why plastic components are excluded from the mechanical parts that control the locking and opening of the saw.

The saw is perfect for cutting firewood, building a shelter, clearing paths, and removing fallen trees during hiking, mountain biking, and other outdoor activities. It is also well-suited for pruning trees and branches in your garden or clearing overgrown bushes.

The saw frame extends through the entire handle, serving as a stabilizing core similar to a full-tang knife, enhancing stability and preventing any wobbling during use. Every component is made from metal for maximum durability, except for the handle, which is constructed from TPE to provide a comfortable and secure grip in all weather conditions, with or without gloves.

The saw blade undergoes Ultra-High Frequency Impulse Hardening in two steps. First, the blade body is hardened to around HRC50, ensuring durability and flexibility without becoming brittle.

Second, the saw teeth are hardened to around HRC60, making them exceptionally hard for long-lasting sharpness. This process results in a durable and flexible blade with sharp teeth that retain their edge for years.

## SPECIFICATIONS

- Durable frame and locking components all made of metal
- HRC 60 - Impulse-hardened teeth for exceptional sharpness retention
- Saw blade crafted from high-quality Japanese SK5 steel
- Easy blade replacement – no special tools required
- 8 teeth per inch for a smooth sawing experience
- Grip-friendly handle

Blade length	210 mm   8 ¼ inch
Total length open	445 mm   17 ½
Total length closed	240 mm   9 ½
Weight	252 g   8.9 oz
Teeth per inch	8
Blade type	For fresh and dry wood
Blade thickness	0,8 mm   2/64 inch
Steel type	Japanese SK5 steel



Art No 11720 - Arnvik  
Made in Taiwan



Art No 11721 - Saw blade freshwood for Arnvik



SCANDINAVIAN OUTDOOR  
AWARD NOMINEE



NORDIC  
POCKET SAW™



## NORDIC POCKET SAW

# SKALVIK 8

Nordic Pocket Saw Skalvik 8 can be used for cutting firewood, clearing paths and removing fallen trees during hiking, mountain biking, and other outdoor adventures. Additionally, it is also suitable for pruning trees and branches in your garden or clearing overgrown bushes.

The handle is made of cork granules, which are derived from leftover materials when manufacturing wine and champagne cork stoppers. Rather than discarding this material, we have repurposed it by grinding and shaping it into an ergonomic handle. Harvesting the cork oak doesn't harm the tree but triggers a self-regeneration process, allowing the tree to rebuild itself. As a result, cork is a fully renewable and 100% recyclable material.

The saw frame is made of high-strength aluminum alloy with excellent corrosion resistance. The sawblade is crafted from durable Swedish steel, containing 90% recycled materials. Vegetable-based oils have been used to tan the leather string, following an ancient method and is an eco-friendlier way of tanning leather.

## SPECIFICATIONS

- Lightweight aluminum frame yet exceptionally durable
- Sawblade made of Swedish quality steel, 90% recycled materials
- Handle made of repurposed cork from production leftovers
- The cork provides a soft and comfortable grip, and it conforms to the shape and grip of your hand
- Made in Sweden

Blade length	215 mm   8 ½ inch
Total length open	440 mm   17 ¼ inch
Total length closed	255 mm   10 inch
Weight	197 g   7 oz
Teeth per inch	7
Blade type	For fresh and dry wood



Art No 11710 - Skalvik 8



Art No 11711 - Sawblade fresh wood



**NORDIC  
POCKET SAW™**



NORDIC POCKET SAW

## MULTI-TOOL 13

This multi-tool includes 13 functions and is suitable for outdoor and daily life situations. It is made of 440 and 420 stainless steel and has a compact design, making it suitable for a variety of activities such as camping, hunting, fishing and for everyday use.

The tool features a knife with a sheepfoot blade, which is suitable for clean cutting on flat surfaces, and a serrated knife for cutting ropes and nylon cords. In addition, it includes two flat screwdrivers (3 mm and 5 mm wide), a PH1 screwdriver, a can opener, a bottle opener, pliers with a wire-cutter function, scissors, and a nylon cord cutter. The saw blade has been equipped with extra sharp and long teeth for cutting through both fresh and dry wood. The locking mechanism on all tools, excluding the pliers, provides added safety during use.

The multi-tool is designed for operation and opening of tools with one hand. It measures 108 mm x 38 mm x 18 mm when folded and has a total weight of 249 grams, making it portable and convenient to carry. It comes with a sturdy nylon hard case that can be attached to a belt for easy access to the tools when needed.



### SPECIFICATIONS

- Tools are accessible with one hand
- Tool lock mechanism for added safety
- Made of stainless steel
- Case can be worn on belt
- Replaceable wire cutters
- 13 different tools
- Sturdy walls on hard case simplify tool insertion/removal without getting stuck

Weight	249 g   8.78 Oz
Size when folded	108x38x18 mm
Material	440 and 420 Stainless Steel
Case material	Nylon
Knife types	Sheepfoot and serrated
Saw type	For fresh/dry wood



Art No 11510  
Multi-tool 13 + black case



Art No 11511  
Replacement Wire Cutter Set



**NORDIC  
POCKET SAW™**



NORDIC POCKET SAW

## MULTI-TOOL 7

This multi-tool includes 7 functions and is suitable for outdoor and daily life situations. It is made of 440 and 420 stainless steel and has a compact design, making it suitable for a variety of activities such as camping, hunting, fishing and for everyday use.

The tool features a knife with a sheepsfoot blade, which is suitable for clean cutting on flat surfaces, and a file that can be used on surfaces such as wood, metal, PVC and more.

In addition, it includes a can opener, a bottle opener, a glass breaker tip and a pair of scissors. The saw blade has been equipped with extra sharp teeth for cutting through both fresh and dry wood. The locking mechanism on all tools provides added safety during use.

The multi-tool is designed for operation and opening of tools with one hand. It measures 110 mm x 19 mm x 19 mm when folded and has a total weight of 143 grams, making it portable and convenient to carry.

### SPECIFICATIONS

- Tools are accessible with one hand
- Tool lock mechanism for added safety
- Made of stainless steel
- 7 different tools
- Equipped with a pocket clip

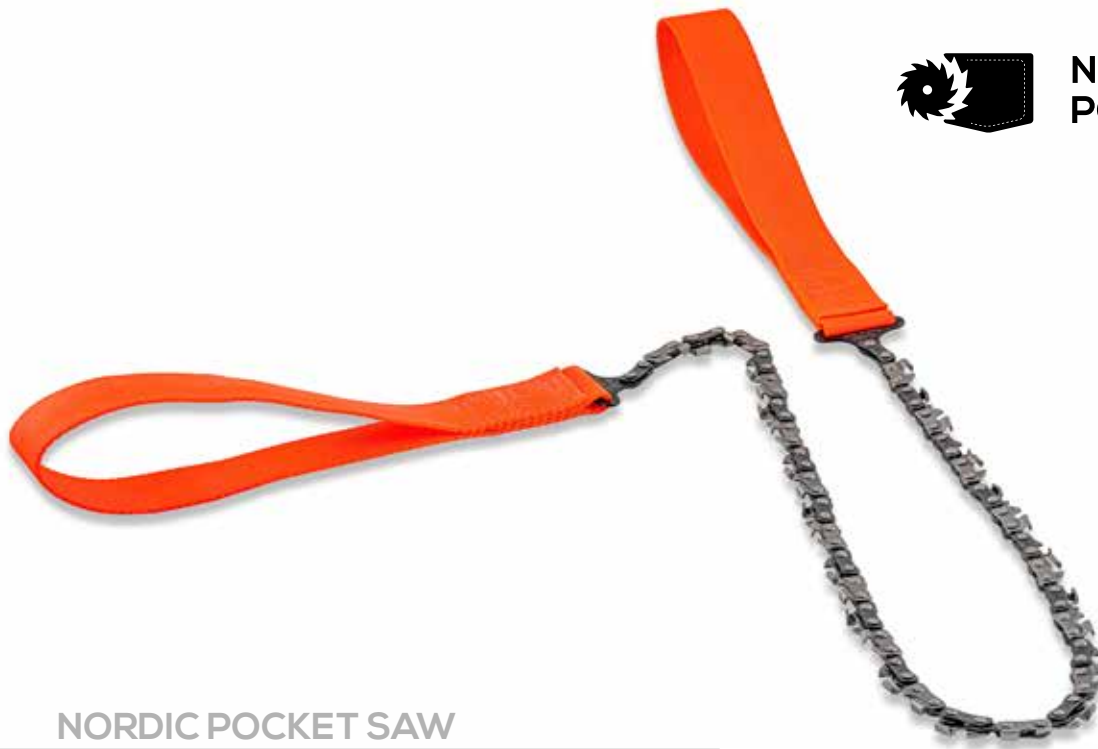
Weight	143 g   5 oz
Size when folded	19x19x110 mm   ¾ x ¾ x 4 5/16 in
Material	440 and 420 Stainless Steel
Knife type	Sheepsfoot
Saw type	For fresh/dry wood



Art No 11520  
Multi-tool 7



NORDIC  
POCKET SAW™



## NORDIC POCKET SAW

# ORIGINAL

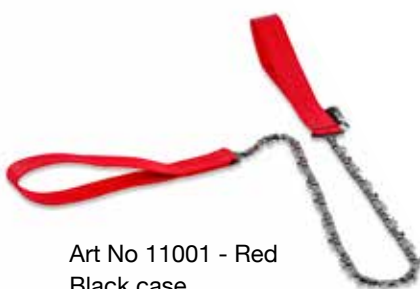
The original version is a smart, packable and lightweight hand powered chainsaw that is easy to pack in your backpack or wear on your belt. It is a perfect companion for hiking, in the lodge, in your prepping kit, SUV, snowmobile or on your mountain bike. It is used by multiple military forces in Europe.

The chain is 65 cm long and made of heat-treated high carbon steel with 33 bi-directional teeth which ensure maximum performance when in use. The handles are made of tough nylon and are extra large to give you a secure grip even when wet. The chain has been tested in a Swedish laboratory and can withstand a force 20 times stronger than a human can achieve at normal use. Five years warranty.

## SPECIFICATIONS

- Handles and case made of heavy duty nylon
- Saw teeth on each element of the chain
- Extra large handles which fit a pair of gloves in winter time
- Can be worn on a belt
- Cut logs up to 45 cm | 18 inch in diameter
- Lightweight and packable
- Bi-directional teeth which cuts in both directions
- Chain made of heat treated carbon steel

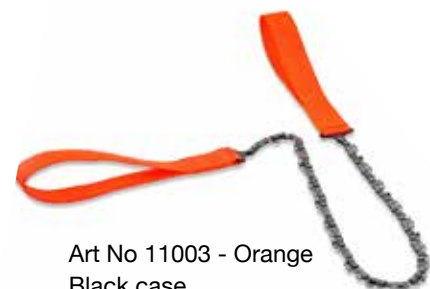
Weight	228 g   8 Oz
Chain length	65 cm   25.6 inch
Total length	111 cm   43.7 inch
Number of teeth	33
Round file size for sharpening	4 mm   5/32 inch



Art No 11001 - Red  
Black case



Art No 11002 - Green  
Black case



Art No 11003 - Orange  
Black case



**NORDIC  
POCKET SAW™**



## NORDIC POCKET SAW

# X-LONG

The X-Long is a longer version of the Nordic Pocket Saw Original and has been developed for two persons operating it. Double power enables the users to cut thicker logs and branches more efficiently.

Except from the length of X-Long, it has the same characteristics and attributes as the Original version. This product was developed after a query from military forces. X-Long comes in green and orange.

Weight	269 g   9.5 Oz
Chain length	93 cm   36.6 inch
Total length	140 cm   55.2 inch
Number of teeth	50
Round file for sharpening	4 mm   5/32 inch

## SPECIFICATIONS

- Handles and case made of heavy duty nylon
- Saw teeth on each element of the chain
- Extra large handles which fit a pair of gloves in winter time
- Can be worn on a belt
- Cut logs up to 60 cm | 24 inch in diameter
- Lightweight and packable
- Bi-directional teeth which cuts in both directions
- Chain made of heat treated carbon steel



Art No 11102 - Green  
Black case



Art No 11103 - Orange  
Black case



**NORDIC  
POCKET SAW™**



## NORDIC POCKET SAW

# PREMIUM

The Nordic Pocket Saw Premium is a more classic and robust version for those who prefer natural materials. The leather comes from Tärnsjö Tannery who only use organic leather supplied by local Swedish farmers. The chain is 65 cm long and made of heat-treated high carbon steel with 33 bi-directional teeth, which ensures maximum performance when in use. Premium version comes in brown leather.

### LEATHER

Since leather is a natural material it puts higher demand on maintenance. Be sure to lubricate the leather every now and then with leather balm, since this will decrease the risk of dry cracks and extend the life time of the leather. When maintaining your Premium version properly the leather will develop a beautiful patina over time. Also be aware that the handles may be stretched to some extent, however, this is considered normal for leather materials.



### SPECIFICATIONS

- Saw teeth on each element of the chain
- Extra large handles which fit a pair of gloves in winter time
- Can be worn on a belt
- Cut logs up to 45 cm | 18 inch in diameter
- Lightweight and packable
- Bi-directional teeth which cuts in both directions
- Chain made of heat treated carbon steel
- Organically produced leather from Swedish farms

Weight	277 g   9.8 Oz
Chain length	65 cm   25.6 inch
Total length	109 cm   42.9 inch



Art No 11210 - Brown  
Leather case



Leather from Tärnsjö Tannery – one of few tanneries in the world that supply vegetable tanned leather.



**NORDIC  
POCKET SAW™**



NORDIC POCKET SAW

## THE ARBORIST V.2

The Arborist V.2 is designed for safe and efficient cutting of hard-to-reach branches. It allows users to cut branches up to 10m/33ft without using a ladder, lift or professional help. The saw's long straps enable users to step back to a safe distance while cutting the branch, reducing the risk of injuries from falling branches or sticks.

The Arborist chain cuts efficiently in both directions, ensuring no power goes to waste. It has a double-sided chain that enables cutting from both sides, eliminating the need to flip the chain to the correct position.

### SPECIFICATIONS

- Works up to 10m/33ft
- Safe cutting – stand up to 10m/33ft away from the tree trunk
- No need to dismount between each cut
- No need for a ladder
- Bi-directional teeth which cuts in both directions
- Teeth on both sides of the chain and on each element

WATCH THE SAW IN ACTION:



Art No 11303  
The Arborist V.2



Art No 11310  
Spare chain



Art No 11311  
Spare throw line



NORDIC  
POCKET SAW™



NORDIC POCKET SAW

## LINWORKER

### THROWING SAW FOR SAFE CUTTING OF TREES AND BRANCHES NEAR POWERLINES

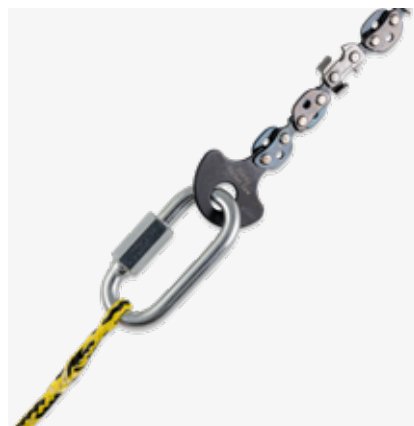
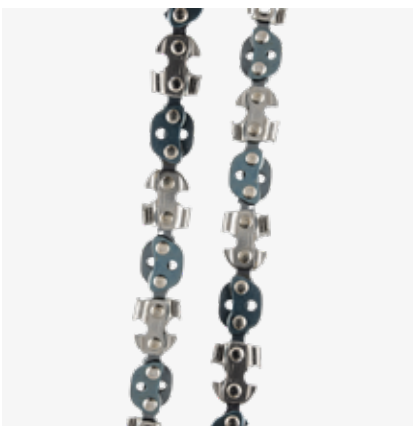
The *Lineworker* is a throwing saw designed primarily for trimming branches and cutting leaning or fallen trees near powerlines. Its non-conductive ropes are certified according to IEC 62192:2009, a standard covering insulating ropes used during work on high-voltage installations.

If a tree has fallen onto a powerline, the *Lineworker* allows users to cut it from a safe distance, eliminating the need for heavy equipment. Thanks to its non-conductive ropes, users are protected from electrical hazards. It can also be used proactively to cut branches or trees that pose a risk of falling onto powerlines during storms or heavy snowfall. A key advantage is that the user can operate the saw from up to 20 meters away from the object being cut, significantly reducing the risk of injury from falling trees or branches.

The *Lineworker* is also useful in other challenging situations. For example, it can be used to bring down a tree that has become lodged in another tree after a storm or following a chainsaw cut that didn't go as planned.

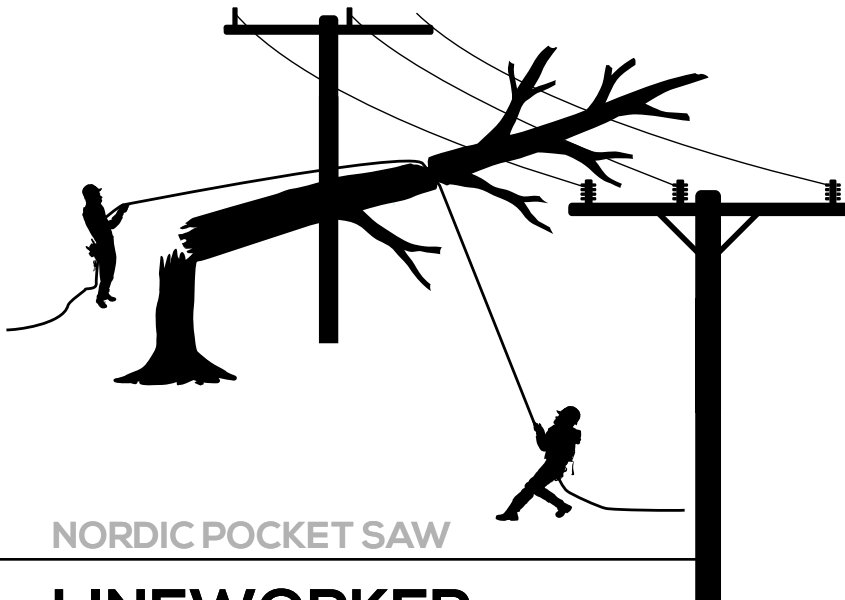
In cases where a tree has been uprooted and is under tension - such as with a raised root system - using a regular chainsaw can be extremely dangerous. The *Lineworker* allows users to safely release that tension from a distance. In fact, the Swedish Rescue Services use this tool not only because not all personnel are trained to operate chainsaws, but also to minimize the risk of injury in high-tension scenarios.

The *Lineworker* is also ideal for maintenance tasks, such as trimming overhanging branches above roads that could fall on pedestrians, vehicles, or property during the next storm or heavy snowfall. It can, of course, also be used for trimming dead or damaged branches in gardens or parks.





**NORDIC  
POCKET SAW™**



NORDIC POCKET SAW

## LINWORKER

### PRODUCT CONTENT

The Lineworker comes equipped with two non-conductive ropes measuring 40 and 20 meters, with the longer rope used during the throwing phase. The 103 cm long saw chain features teeth on both sides, ensuring it will cut no matter which side that lands on the branch. Additionally, the bi-directional teeth allow for efficient cutting in both directions as you pull back and forth.

For convenient storage and transport, the Lineworker is delivered in a compact, collapsible bag. During the throwing phase, the rope feeds smoothly out of the bag, minimizing the risk of tangling or snagging on sticks and debris when placed directly on the ground.

The bag has a waterproof bottom and mesh fabric for ventilation in case the products become wet during use. The Lineworker also comes with two handles for comfortable sawing, which can be attached anywhere on the ropes using a clove hitch knot.

In addition to the details mentioned above, the Lineworker also includes a throw bag, a protective case for the saw chain, two screw carabiners to connect the chain to the ropes, and a key tool to tighten the carabiners.

### SPECIFICATIONS

- Non-conductive ropes certified up to 100.000 volts
- No need for heavy equipment to remove a fallen tree
- Stand on a safe distance from the tree you are cutting
- The saw teeth are bi-directional and they are placed on both sides of the chain
- Works for branches and trees 20 m / 66 feet high up

SCAN TO SEE INSTRUCTION MOVIE:



Art no 11350  
Lineworker



Art no 11352  
Spare Chain  
for Lineworker



Art no 11351  
Red Spare Line  
for Lineworker



Art no 11353  
Yellow Spare Line  
for Lineworker

## CONTACT

For inquiries, please contact us at [info@nordicpocketsaw.com](mailto:info@nordicpocketsaw.com).

## MARKETING MATERIALS

For marketing materials, please visit the Dealer Resources page on our official website. The Dealer Resources section is filled with product images, videos, and a lot more information. As a customer of Nordic Pocket Saw, you are welcome to use these materials for marketing purposes.



**NORDIC  
POCKET SAW™**