

# Product Brochure

浙江亿利达风机股份有限公司  
Zhejiang Yilida Ventilator Co., Ltd.

地址：中国浙江台州市路桥区横街亿利达路 邮编：318056  
AD: Yilida Road, Hengjie, Luqiao District, Taizhou City, Zhejiang, China P.C: 318056  
E: +86 576 82656000  
+86 576 82658900  
F: +86 576 82655758  
E: info@yilida.com  
全球服务热线Hot Line: 400 1135 666  
+86 576 82622666 (国际贸易 International Trade)

股票代码：002686

[www.yilida.com](http://www.yilida.com)

版本号：C202302该手册最终解释权归亿利达公司所有  
Version Number: C202302 The rights of final interpretation of this brochure belong to Yilida.  
©2023 All Rights Reserved by Yilida  
©2023亿利达拥有版权并保留所有权利

Yilida  
Intelligent  
Manufacturing

亿利达智造



Energy saving fan motor system

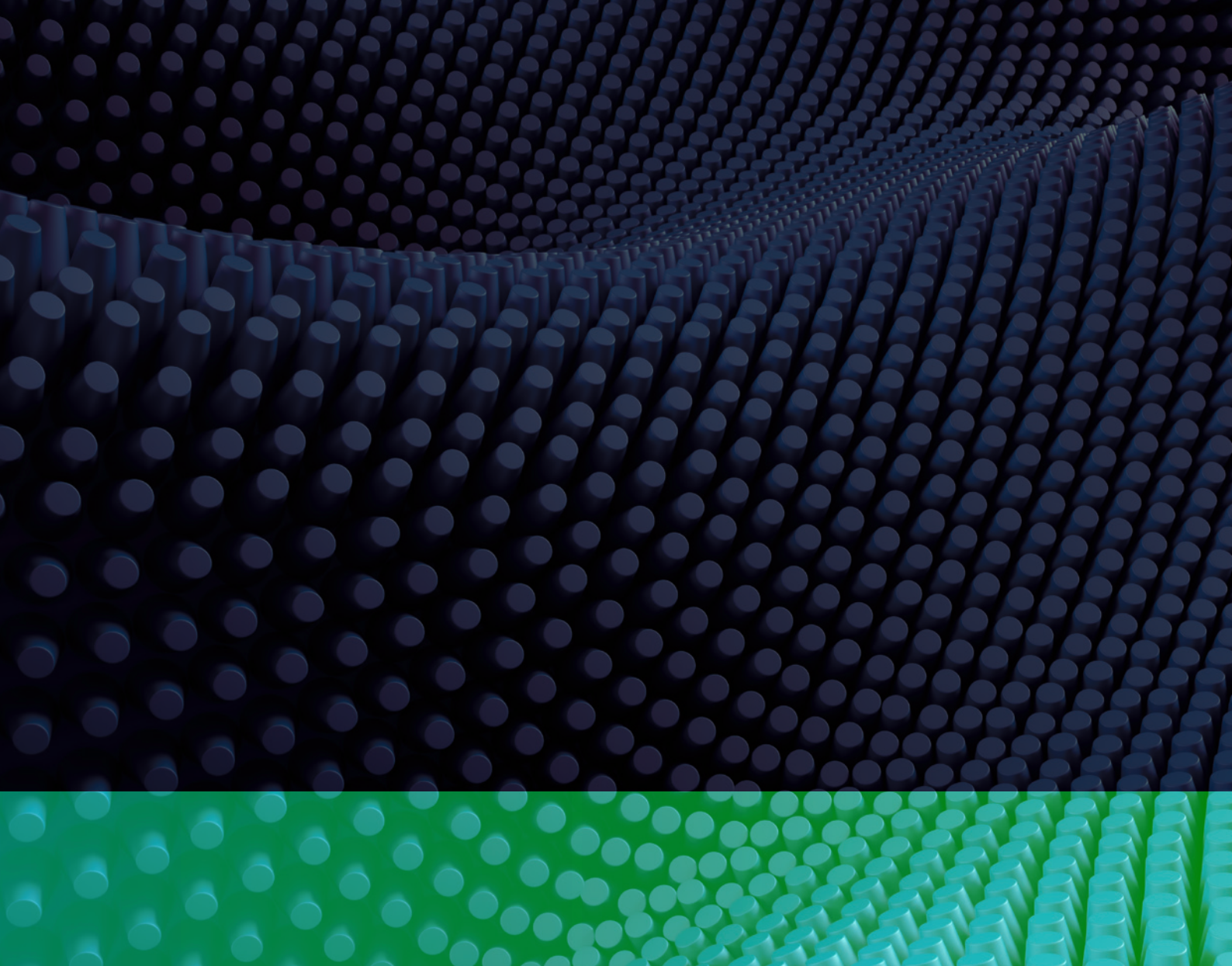
Central Air Conditioning Fan

Building ventilation

03  
/  
04

05  
/  
06

07  
/  
08



Zhejiang Yilida Ventilator Co.,Ltd (stock code 002686) was founded in 1994, controlled by Zheshang Asset Management Co., Ltd , a subordinate company of State-owned Asset Supervision and Administration Commission (SASAC) of the People's Government of Zhejiang Province. Domestic well-known central air conditioning fan production enterprises and building fan (Engineering fan) manufacturers. We uphold the spirit of innovation, stride forward from the traditional fan manufacturer to the integrators of fan and intelligent motor drive system gradually and realize the " the smart air" brand concept through the development of intelligent high efficiency motor. Yilida was listed in Shenzhen Stock Exchange successfully on 3rd July 2012, with the help of the capital market, by means of merger and acquisition, Yilida get involved in new materials, new energy, automotive lightweight components and other fields, and enterprise has achieved sustainable development.

Now the company's products cover motorized fan system, new energy vehicles automotive lightweight components, new materials for marine industry and other areas, and the company have famous brands such as "Yilida" , "Wolter" , " Fulihua" , "ESSENTEC" , "AMMT" , "TC Charger" , "Sanjin" etc. "Yilida" is a well-known brand of central air-conditioning fans in China; "Wolter" is committed to building a high-end brand in the domestic building ventilation field, providing ventilation products and services; "Fulihua" is a domestic high-quality axial flow fan brand; "ESSENTEC" is a pioneer in the butler service of product components from leading air conditioning manufacturers worldwide; "AMMT" is an expert in ship and marine protective materials, functional materials, and composite materials; "TC charger" is a well-known brand of domestic vehicle charger; "Sanjin" is a domestic supplier of lightweight automotive components. We have established seven production bases in Taizhou, Fogang, Zhangjiagang, Haining, Hangzhou and Qingdao to provide high quality products and meet requirement of lead time.

Our efforts keep tens of millions Yilida fans continuous operating in the world' s landmark buildings and urban infrastructure, so that more people enjoy energy conservation, environmental protection and healthy living, to achieve sustainable development between society and enterprise revenue.

# YILIDA



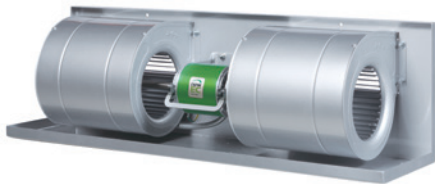




**YEM SERIES**

**EC MOTOR DRIVEN FORWARD CURVED CENTRIFUGAL FANS**

Impeller diameter: 120~280mm  
 Range of air volume: 50~3000m³/h  
 Range of Pressure: 0~1000Pa  
 Motor power: 10W~950W  
 Control mode: VSP/485  
 Insulation grade: B  
 Operation Temperature: -25°C~60°C



**PP SERIES**

**EC MOTOR DRIVEN FORWARD CURVED CENTRIFUGAL FANS**

Application: Fan coil units (FCU) and small ducted ventilation products  
 Impeller diameter: 130~280mm  
 Range of air volume: 100~2000m³/h  
 Range of Pressure: 0~250Pa  
 Motor power: 60W~120W  
 Control mode: VSP/PWM/485  
 Insulation grade: B  
 Operation Temperature: -25°C~60°C



**YUW SERIES**

**EC MOTOR DRIVEN PLUG FANS**

Application: fresh air unit, air handling unit  
 Impeller diameter: 133~630mm  
 Range of air volume: 300~20000m³/h  
 Range of Pressure: 0~2000Pa  
 Motor power: 500W~7500W  
 Control mode: VSP/4~20ma/PWM/485  
 Insulation class: B/F  
 Operating temperature: -25°C~60°C



**CBPF SERIES**

**EC MOTOR DRIVEN CABINET WITH PLUG FAN**

Impeller diameter: 250~630mm  
 Range of air volume: 300~20000m³/h  
 Range of Pressure: 0~2000Pa  
 Motor power: 170W~7500W  
 Control mode: VSP/4~20ma/PWM/485  
 Insulation class: B/F  
 Operating temperature: -25°C~60°C

1000

5000

20000

.....



**ZQ SERIESEC**

**EXTERNAL ROTOR MOTOR DRIVEN CENTRIFUGAL FANS**

Impeller diameter: 7~12in.  
 Range of air volume: 300~5000m³/h  
 Range of Pressure: 0~600Pa  
 Motor power: 250W、375W、500W、750W  
 Control mode: VSP/PWM  
 Insulation class: B  
 Operating temperature: -25°C~40°C



**YGZES SERIES**

**EC DUCT FAN**

Impeller diameter: 7~12in.  
 Range of air volume: 300-5000m³/h  
 Range of Pressure: 0-600Pa  
 Motor power: 250W~750W  
 Control mode: VSP/PWM  
 Insulation class: B  
 Operating temperature: -25°C~40°C



**AXF SERIES**

**The EC MOTOR DRIVEN AXIAL FAN**

Impeller diameter: 760~950mm  
 Range of air volume: 11500~35000m³/h  
 Range of Pressure: 0~260Pa  
 Motor power: 2500W~4500W  
 Control mode: VSP/4~20ma/PWM/485  
 Insulation class :F  
 Operating temperature: -45°C~65°C



**FAN WALL**

**EC FAN WALL**

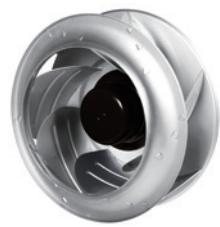
Impeller diameter: 355~630mm  
 Range of Pressure: up to 2000Pa  
 Motor power: Maximum 7500W for a single machine  
 Control mode: VSP/4~20ma/PWM/485  
 Insulation class: F  
 Operating temperature: -25°C~60°C



## SYP SERIES

**DOUBLE INLET FORWARD CURVED CENTRIFUGAL FANS**

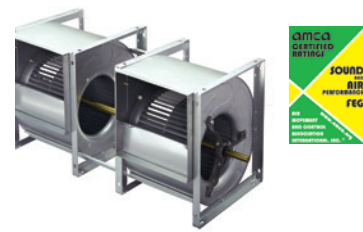
Diameter of Impeller: 130~270mm  
Range of Volume: 250~3000m<sup>3</sup>/h  
Range of Pressure: up to 400Pa  
Drive Type: direct driven



## YUW SERIES

**BACKWARD CURVED DIRECT DRIVEN CENTRIFUGAL IMPELLERS**

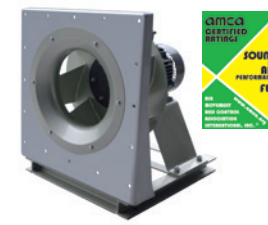
Diameter of Impeller: 280~630mm  
Range of Volume: 800~12500m<sup>3</sup>/h  
Range of Pressure: up to 400Pa  
Drive Type: direct driven



## SYT SERIES

**DOUBLE INLET FORWARD CURVED CENTRIFUGAL FANS**

Diameter of Impeller: 7~30in  
Range of Volume: 1000~50000m<sup>3</sup>/h  
Range of Pressure: up to 800Pa  
Drive Type: belt driven



## SYWA SERIES

**AIRFOIL PLUG DIRECT DRIVEN FANS**

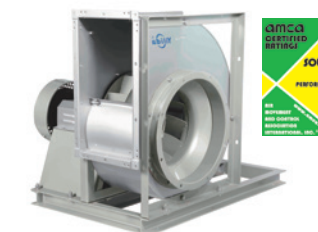
Diameter of Impeller: 280~1400mm  
Range of Volume: 1000~100000m<sup>3</sup>/h  
Range of Pressure: up to 2000Pa  
Drive Type: direct driven



## SYWB SERIES

**DIRECT DRIVEN PLUG FANS**

Diameter of Impeller: 250~1400mm  
Range of Volume: 1000~100000m<sup>3</sup>/h  
Range of Pressure: up to 2000Pa  
Drive Type: direct driven



## SYQS SERIES

**SINGLE INLET BACKWARD CURVED CENTRIFUGAL FANS**

Diameter of Impeller: 180~1400mm  
Range of Volume: 1000~120000m<sup>3</sup>/h  
Range of Pressure: up to 3000Pa  
Drive Type: belt driven



## YWPL SERIES

**SINGLE INLET BACKWARD PLUG FAN**

Impeller diameter: 12.4~49in.  
Air volume: up to 129100m<sup>3</sup>/h  
Static pressure: up to 2980Pa

5000

10000

20000

50000

100000

.....



## SYF SERIES

**SINGLE INLET DIRECT DRIVEN CENTRIFUGAL FANS**

Diameter of Impeller: 3~8in  
Range of Volume: 2000m<sup>3</sup>/h  
Range of Pressure: pressure rate up to 200Pa  
Drive Type: direct driver



## SYZ SERIES

**DOUBLE INLET FORWARD CURVED CENTRIFUGAL FANS**

Diameter of Impeller: 6~12in  
Range of Volume: 800~5000m<sup>3</sup>/h  
Range of Pressure: up to 500Pa  
Drive Type: direct driven



## SYB SERIES

**EXTERNAL ROTOR MOTOR DIRECT DRIVEN CENTRIFUGAL FANS**

Diameter of Impeller: 200~500mm  
Range of Volume: 1000~20000m<sup>3</sup>/h  
Range of Pressure: up to 600Pa  
Drive Type: motor direct driven



## SYDS SERIES

**SINGLE INLET FORWARD CURVED CENTRIFUGAL FANS**

Diameter of Impeller: 180~1000mm  
Range of Volume: 700~50000m<sup>3</sup>/h  
Range of Pressure: up to 1300Pa  
Drive Type: belt driven



## SYD SERIES

**DOUBLE INLET FORWARD CURVED CENTRIFUGAL FANS**

Diameter of Impeller: 180~1000mm  
Range of Volume: 1000~100000m<sup>3</sup>/h  
Range of Pressure: up to 1300Pa  
Drive Type: belt driven



## SYQ SERIES

**DOUBLE INLET BACKWARD CURVED CENTRIFUGAL FANS**

Diameter of Impeller: 200~1400mm  
Range of Volume: 1000~240000m<sup>3</sup>/h  
Range of Pressure: up to 300Pa  
Drive Type: belt driven



## SYH SERIES

**DOUBLE INLET BACKWARD CURVED AIRFOIL CENTRIFUGAL FANS**

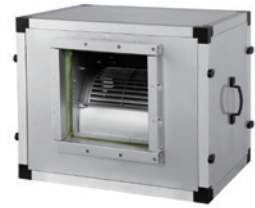
Diameter of Impeller: 280~1600mm  
Range of Volume: 1000~300000m<sup>3</sup>/h  
Range of Pressure: up to 3000Pa  
Drive Type: belt driven



RS/RK SERIES

**DUCT FANS**

Applications: duct pressurized ventilation / mini mute ventilation  
 Diameter of Impeller: 200~355mm  
 Range of Volume: 100~2000m<sup>3</sup>/h  
 Range of Pressure: up to 600Pa  
 Drive Type: direct driven



EKZ/EKZS SERIES

**DUCT FANS**

Applications: duct ventilation / mute ventilation  
 Diameter of Impeller: 6~12in.  
 Range of Volume: 500~5000m<sup>3</sup>/h  
 Range of Pressure: up to 500Pa  
 Drive Type: direct driven



EKN/EKNS/  
DKN/DKNS SERIES

**DUCT FANS**

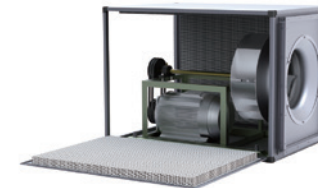
Applications: duct ventilation / mute ventilation  
 Diameter of Impeller: 200~450mm  
 Range of Volume: 500~8500m<sup>3</sup>/h  
 Range of Pressure: up to 500Pa  
 Drive Type: direct driven



DKB/DKBS SERIES

**DUCT FANS**

Applications: duct ventilation / mute ventilation  
 Diameter of Impeller: 200~500mm  
 Range of Volume: 500~20000m<sup>3</sup>/h  
 Range of Pressure: up to 600Pa  
 Drive Type: direct driven



KBPF(P) SERIES

**CABINET FANS WITH BELT DRIVEN PLUG FANS**

Applications: mute ventilation / purification ventilation  
 Diameter of Impeller: 250~1000mm  
 Range of Volume: 1000~60000m<sup>3</sup>/h  
 Range of Pressure: up to 1500Pa  
 Drive Type: belt driven



RPH SERIES

**ROOF FANS**

Applications: smoke exhaust / factory ventilation  
 Diameter of Impeller: 355~1000mm  
 Range of Volume: 1000~60000m<sup>3</sup>/h  
 Range of Pressure: up to 1200Pa  
 Drive Type: direct driven



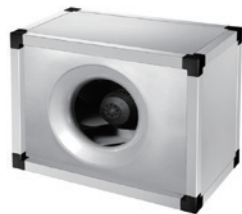
KBF SERIES

**SMOKE EXHAUST CABINET FANS**

Applications: smoke exhaust / explosion-proof ventilation  
 Diameter of Impeller: 200~1400mm  
 Range of Volume: 100~240000m<sup>3</sup>/h  
 Range of Pressure: up to 3000Pa  
 Operating Temperature: 280°C/1h  
 Drive Type: belt driven

5000 10000 20000 50000 100000 .....

Air Volume



EK/EKS/DK/DKS SERIES

**DUCT FANS**

Applications: duct ventilation  
 Diameter of Impeller: 175~310mm  
 Range of Volume: 500~6000m<sup>3</sup>/h  
 Range of Pressure: up to 700Pa  
 Drive Type: direct driven



JFUO-JFUR SERIES

**JET FANS**

Applications: subway/tunnel ventilation  
 Diameter of Impeller: 250~370mm  
 Range of Volume: 1400~11000m<sup>3</sup>/h  
 Range of Thrust: 4~72N  
 Operating Temperature: 250°C/1h  
 Drive Type: direct driven



AEQ/ADQ SERIES

**AXIAL FANS**

Applications: used in the high-volume, -medium or low-pressure ventilation places  
 Diameter of Impeller: 200~800mm  
 Range of Volume: 500~25000m<sup>3</sup>/h  
 Range of Pressure: up to 200Pa  
 Drive Type: direct driven



KBPF SERIES

**CABINET FANS WITH DIRECT DRIVEN PLUG FANS**

Applications: mute ventilation / purification ventilation  
 Diameter of Impeller: 250~1000mm  
 Range of Volume: 1000~60000m<sup>3</sup>/h  
 Range of Pressure: up to 1500Pa  
 Drive Type: direct driven



AXV/BXV SERIES

**AXIAL FANS**

Applications: large-scale building ventilation  
 Diameter of Impeller: 350~1600mm  
 Range of Volume: 1000~150000m<sup>3</sup>/h  
 Range of Pressure: up to 1500Pa  
 Drive Type: direct driven



KB SERIES

**CABINET FANS**

Applications: mute ventilation / purification ventilation  
 Diameter of Impeller: 200~1400mm  
 Range of Volume: 100~240000m<sup>3</sup>/h  
 Range of Pressure: up to 3000Pa  
 Drive Type: belt driven